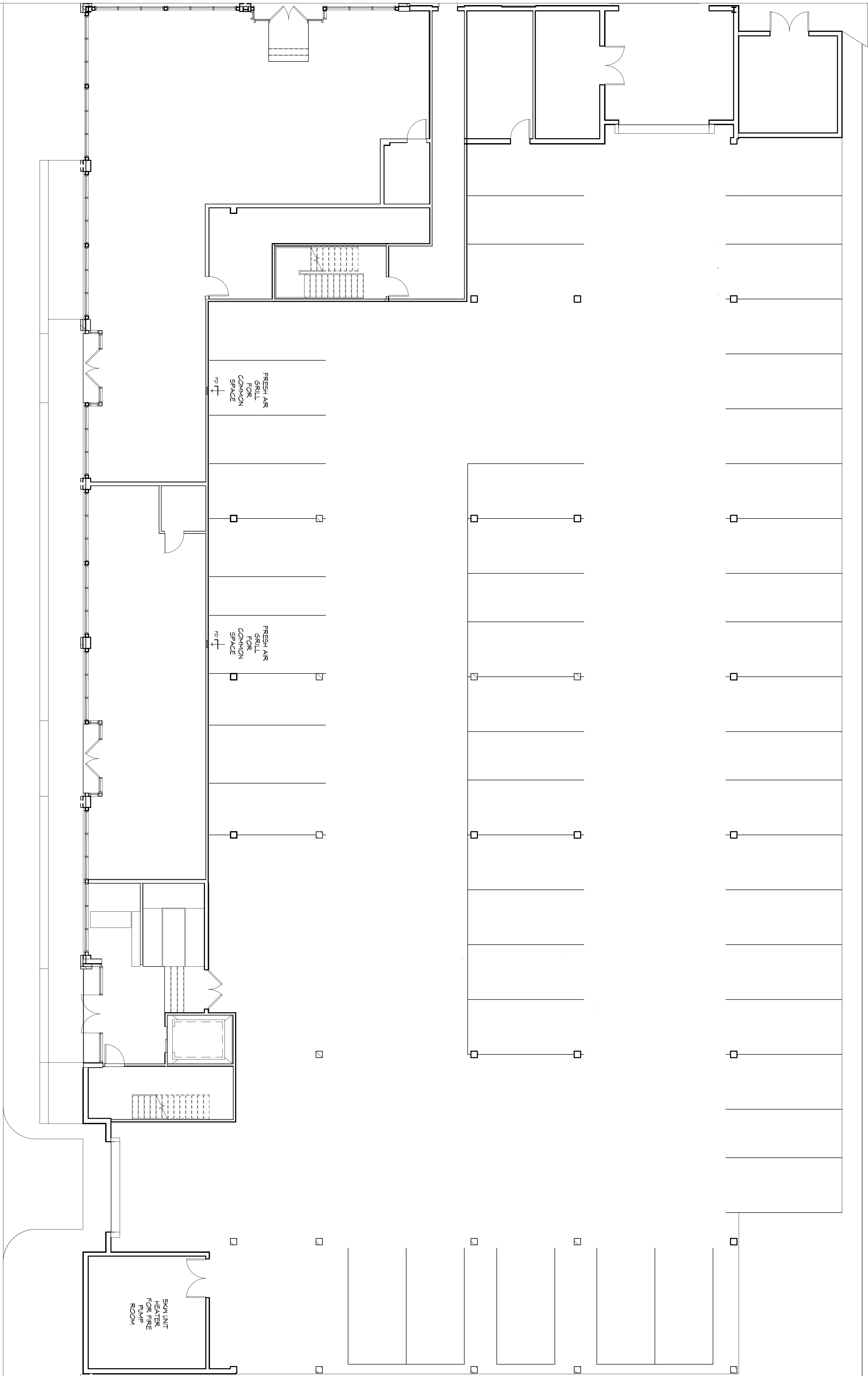


GENERAL HVAC NOTES

1. CONCEALED DUCTWORK TO BE GALVANIZED SHEET METAL LINED WITH FIBERGLASS GLASS DUCT LINER, MIN R-6. INSTALLED PER SMACNA STANDARDS.
2. EXPOSED DUCTWORK TO BE GALVANIZED SHEET METAL LINED WITH FIBERGLASS GLASS DUCT LINER, MIN R-6. INSTALLED PER SMACNA STANDARDS.
3. ROUND FLEXIBLE DUCT TO BE UL-181, CLASS 1, AIR DUCT MATERIALS.
4. DUCT SIZES SHOWN ARE CLEAR INSIDE DIMENSIONS.
5. IN ALL SYSTEMS OVER 2000 CFM AND LESS THAN 15,000 CFM, SMOKE DETECTORS SHALL BE INSTALLED IN ACCORDANCE WITH NFPA 72E IN THE RETURN DUCT DOWNSTREAM OF THE AIR HANDLING UNIT AND ALL FILTERS TO AUTOMATICALLY STOP THE FAN.
6. PROVIDE UL LISTED 125 F° FRESH AIR RETURN AIR OF EACH SYSTEM UNDER 2000 CFM TO SHUT DOWN THE FAN IN THE EVENT OF FIRE.
7. PROVIDE UL RATED FIRE DAMPERS WHERE REQUIRED AT ALL DUCT PENETRATIONS THROUGH EXTERIOR WALLS AND ROOFS. PROVIDE EXHAUST FANS INCLUDING OUTSIDE AIR INTAKES AND EXHAUST FANS FIVE FEET OF AIR HANDLING UNITS.
8. CONDENSATE PANS TO BE PVC PIPE RUN TO PLUMBERS P-TRAP WITHIN FIVE FEET OF AIR HANDLING UNITS.
9. ALL AIR HANDLING SYSTEMS TO BE BALANCED TO ASSURE PROPER AIR FLOW PER PLANS.
10. ALL THERMOSTATS TO BE AUTOMATIC CHANGED/OVER WITH HEAT SWITCH.
11. EXHAUST FAN SHALL BE CONTROLLED BY A SWITCH ON THE WALL IN THE SAME LOCATION AS LIGHT SWITCHES. PROVIDE SMOKE DETECT DRIPPER LOCATION FOR FIBERGLASS FLEXIBLE EXHAUST.
12. PROVIDE AND INSTALL WATER PROOF GRILLE VENT IN PROPER ROOF LOCATION FOR FIBERGLASS FLEXIBLE EXHAUST.
13. ALL SPLIT AIR VENTS SHALL BE EQUIPPED WITH AIR CONTROL DAMPERS AND REGISTERES.
14. LOCATE OUTDOOR UNITS AS SHOWN ON ARCHITECTURAL DRAWINGS.
15. REFRIGERANT LINES SHALL BE SEED BY UNIT MANUFACTURER AND INSTALLED ACCORDING TO MANUFACTURERS' INSTRUCTIONS.
16. FRESH AIR SHALL BE SUPPLIED TO EACH AIR HANDLER THROUGH EXTERIOR WALL DUCT SUPPLIED WITH A CONTROL DAMPER.
17. ALL ELECTRICAL, MECHANICAL, AND PLUMBING PENETRATING FIRE RESISTIVE WALLS SHALL BE SEATED WITH MATERIAL CAPABLE OF PREVENTING THE PASSAGE OF FLAMES AND HOT GASES WHEN TESTED IN ACCORDANCE WITH ASTM-E814.
18. ALL MECHANICAL SYMBOLS ARE DRAWN DIAGRAMMATICALLY. CONTRACTOR TO VERIFY WITH OWNER LOCATIONS OF VENTS, DAMPERS, REGISTERES, ETC.
19. FLEXIBLE DUCTWORK LENGTH NOT TO EXCEED 12'-0".
20. REFER TO REFLECTED CEILING PLAN FOR FINAL GRILLE AND DIFFUSER LOCATIONS AND COORDINATE AS REQUIRED.
21. FINAL LOCATION OF TEMPERATURE CONTROLS TO BE COORDINATED WITH OWNER AT JOB SITE.
22. PROVIDE AND INSTALL SMOKE DETECTORS AS APPROVED BY LOCAL A.H.U.S. PLACE NEAR R/A AND S/A OPENINGS OF AHU AND PROVIDE WITH ACCESS PANEL, WIRING BY ELECTRICAL CONTRACTOR.
23. FRESH AIR INTAKES ARE REQUIRED TO HAVE NOTICED OR GRAVITY DAMPERS TO SHUT OFF WHEN SYSTEM IS NOT RUNNING.
24. PROVIDE BIRD SCREENS AT ALL EXTERIOR MECHANICAL PENETRATIONS.
25. COORDINATE WALL MOUNTED THERMOSTAT LOCATIONS WITH ALL OWNER FURNISHED ITEMS EITHER WALL MOUNTED OR FLOOR MOUNTED AGAINST PARTITIONS. REFER TO ARCHITECTURAL DRAWINGS.
26. SEE ROOF PLAN FOR ALL ROOF PENETRATIONS.
27. PROVIDE MIN 18 GA GALVANIZED SHEET METAL TO BLANK-OFF GABLE VENTS WHERE INTAKE/EXHAUST DUCTS OCCUR.



MECHANICAL GROUND FLOOR

In joint venture with:

SPLIT UNIT HEATER FOR FIRE PUMP ROOM

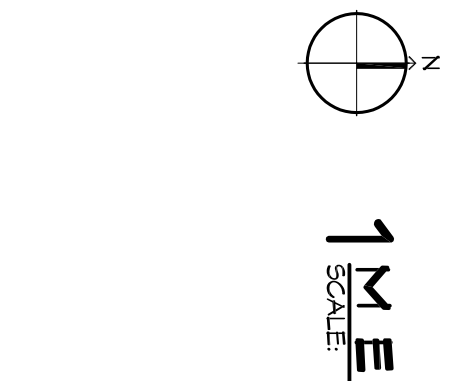
FRESH AIR GRILLE FOR COMMON SPACE

FRESH AIR GRILLE FOR COMMON SPACE

DAMMON
ENGINEERING, INC.
Architects & Engineers

Chief Engineer: Brian Minton, PE
13700 South Loop West
Suite 1000
Houston, TX 77048
P: 281.416.1500

www.dammonengineering.com
Info@dammon.com
P: 985.645.5832
F: 985.641.5950



Permit:
Documents
MECHANICAL
GROUND
FLOOR

Revisions:

Issue Purpose:

Date:

1581 MAGAZINE STREET
New Orleans, Louisiana 70130

Drawn by:
Author:
Sheet:
Comments:

architecture + planning + interiors
1119 Tchoupitoulas Street
New Orleans, LA 70130
504.593.9074 tel
www.studioto.com

M100
7/16/2015
©2014 SHoPWA