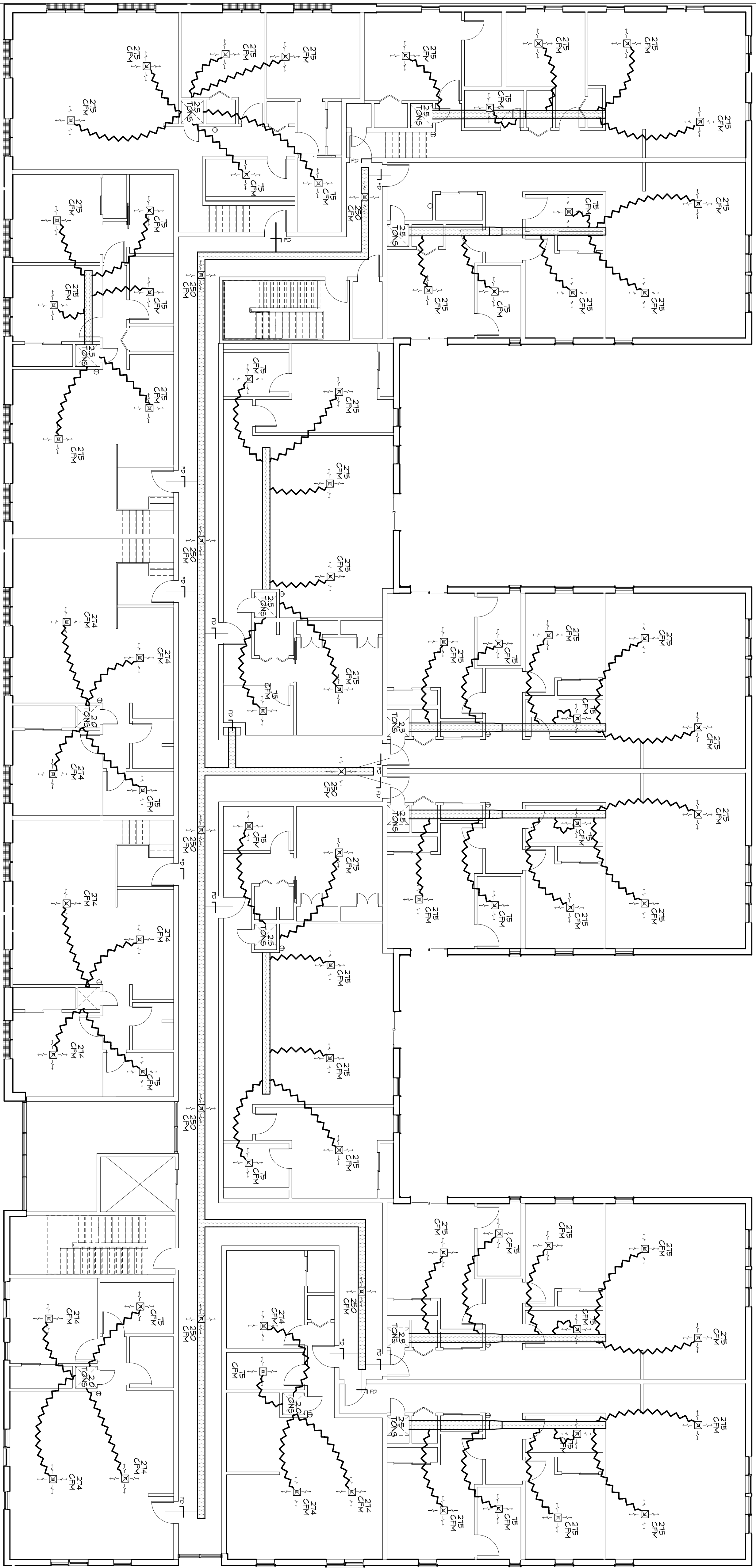


- ### GENERAL HVAC NOTES
1. CONCEALED DUCTWORK TO BE GALVANIZED SHEET METAL LINED WITH FIBROUS GLASS DUCT LINER, MIN R-6, INSTALLED PER SMACNA STANDARDS.
 2. EXPOSED DUCTWORK TO BE GALVANIZED SHEET METAL LINED WITH FIBROUS GLASS DUCT LINER, MIN R-6, INSTALLED PER SMACNA STANDARDS.
 3. ROUND FLEXIBLE DUCT TO BE UL-181, CLASS 1, AIR DUCT MATERIALS.
 4. DUCT SIZES SHOWN ARE CLEAR INSIDE DIMENSIONS.
 5. IN ALL SYSTEMS OVER 2000 CFM AND LESS THAN 15,000 CFM, SMOKE DETECTORS SHALL BE INSTALLED IN ACCORDANCE WITH NFPA 72 IN THE RETURN DUCT DOWNSTREAM OF THE AIR HANDLING UNIT AND ALL FILTERS TO AUTOMATICALLY STOP THE FAN.
 6. PROVIDE UL LISTED 1/2\"/>



LEGEND

- ① THERMOSTAT
- FD SUPPLY AIR GRILLE WITH FIRE DAMPER
- FD 6\"/>

ROUND FLEXIBLE DUCT MAX LENGTH 12'-0\"/>

MANUAL DAMPER AT DIFFUSER CONNECTIONS

DUCT SIZE AS TO FLOOR, ROOM TO 2000 CFM = 8\"/>

ROOM TO 2000 CFM = 8\"/>

ROOM TO 1500 CFM = 6\"/>

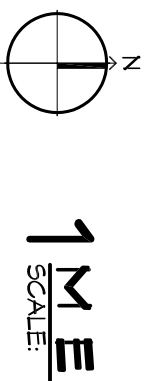
ROOM TO 1000 CFM = 4\"/>

A/C UNIT SCHEDULE

NO.	TOTAL BTU	CFM	PA	HEAT ELEC.	ELECTRICAL VOLTAGE	CONTROL	BEAKER	COMMENTS
1	30,000	1,250	1.5 KW	1.5 KW	48 AMP		LENOX	
2	22,000	987	1 KW	1 KW	30 AMP		LENOX	
3	12,000	487	0.5 KW	0.5 KW	15 AMP		LENOX	

2.5 TON CONDENSER, MODEL # YPLA-030
 2.5 AIR HANDLER, MODEL # CBVSH-030
 2.0 TON CONDENSER, MODEL # YPLA-024
 2.5 AIR HANDLER, MODEL # CBVSH-024

MECHANICAL HVAC FIRST FLOOR



In joint venture with:

DAMMON

ENGINEERING, INC.

Architects & Engineers

Chief Engineer: Brian Mistick, PE
 534 Old Spanish Trail
 Slidell, LA 70368

www.dammonengineering.com
 info@dammonengineering.com
 PH: 985.646.5832
 F: 985.641.1950

Revisions:	Issue Purpose:	Date:
Permit Documents		
MECHANICAL HVAC FIRST FL		
7/16/2015		

1581 MAGAZINE STREET
 New Orleans, Louisiana 70130

Drawn by: _____
 Author: _____
 Sheet: _____
 Comments: _____

architecture + planning + interiors
 1119 Tchoupitoulas
 New Orleans, LA 70130
 504.593.9074 tel
 www.studioxto.com