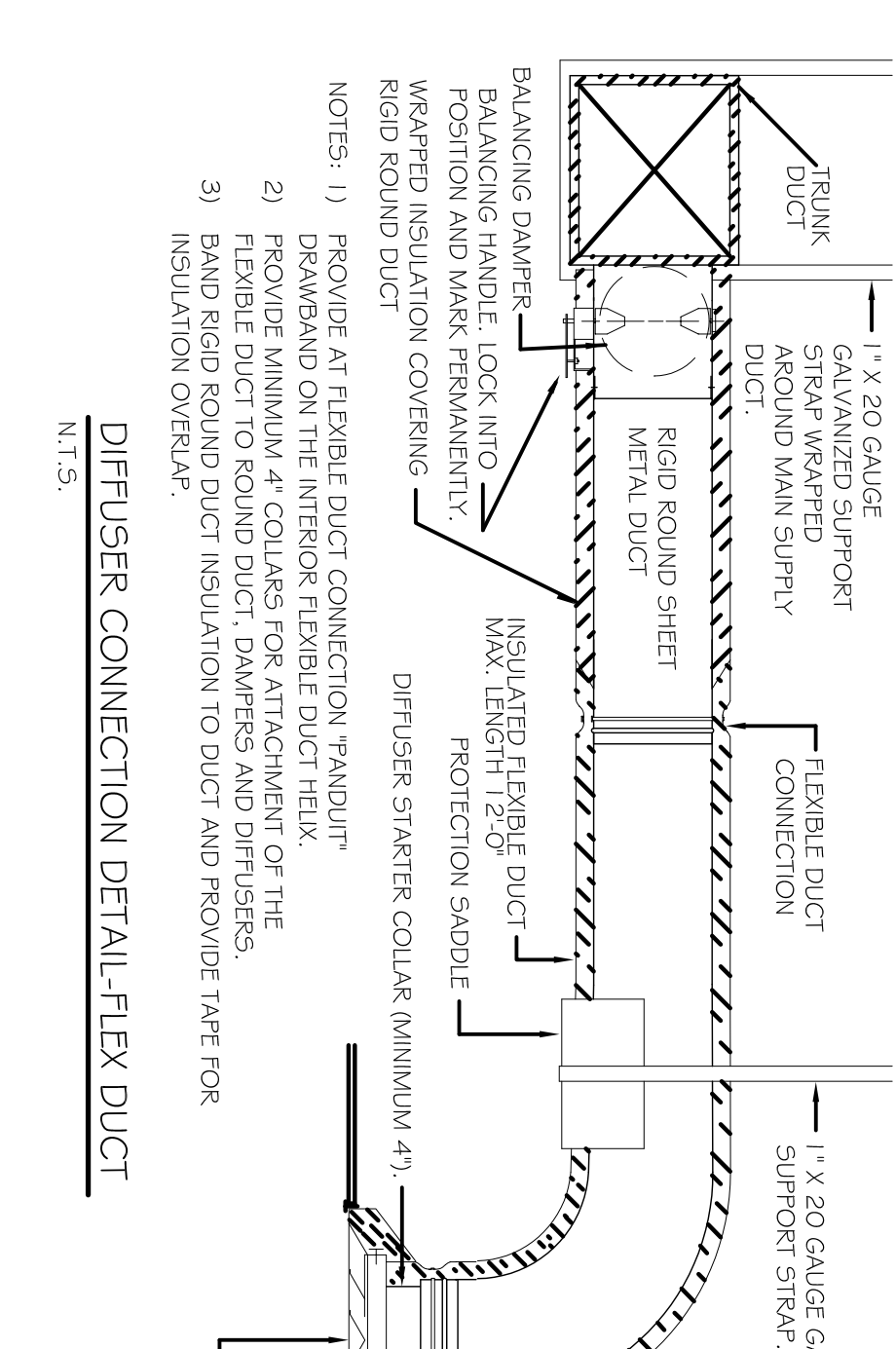
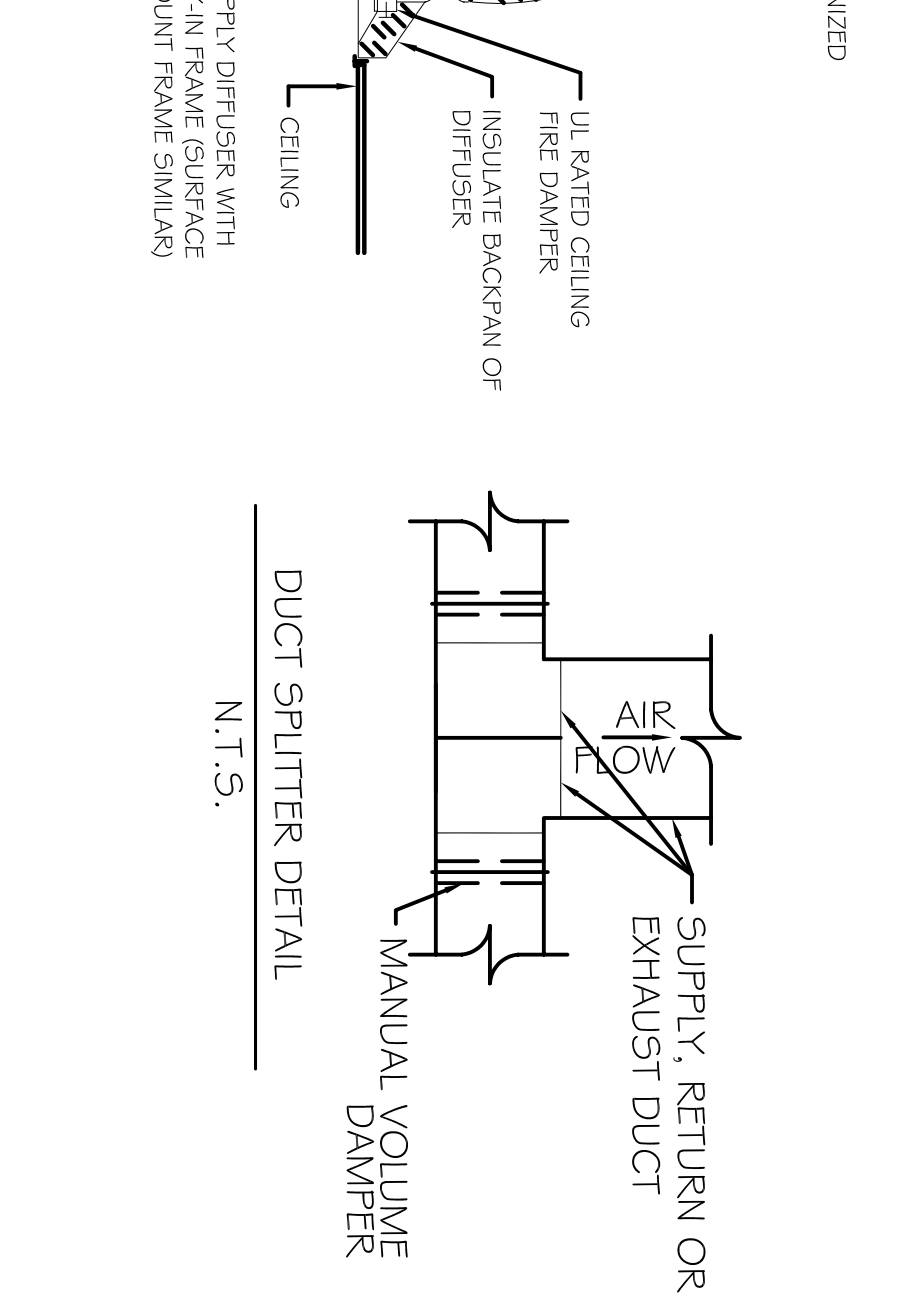
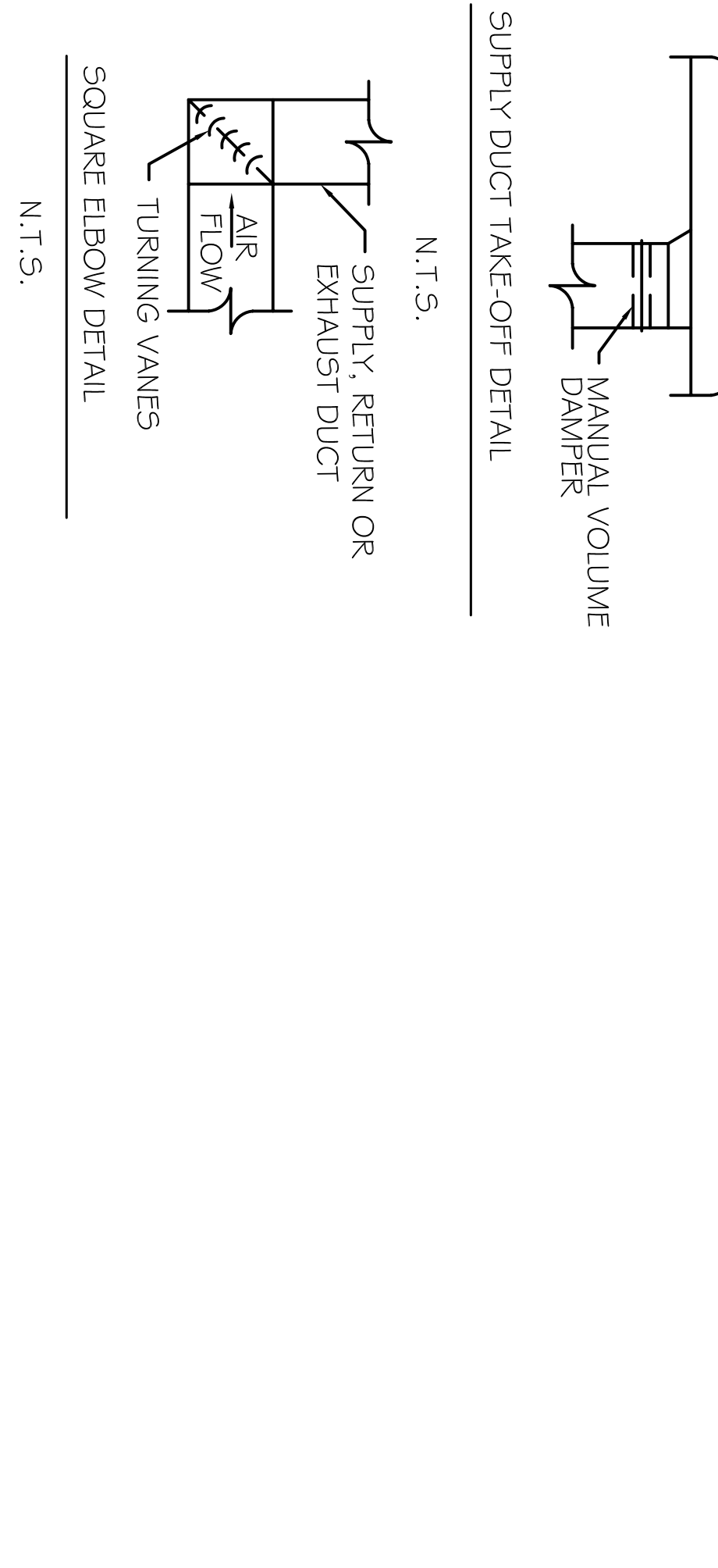
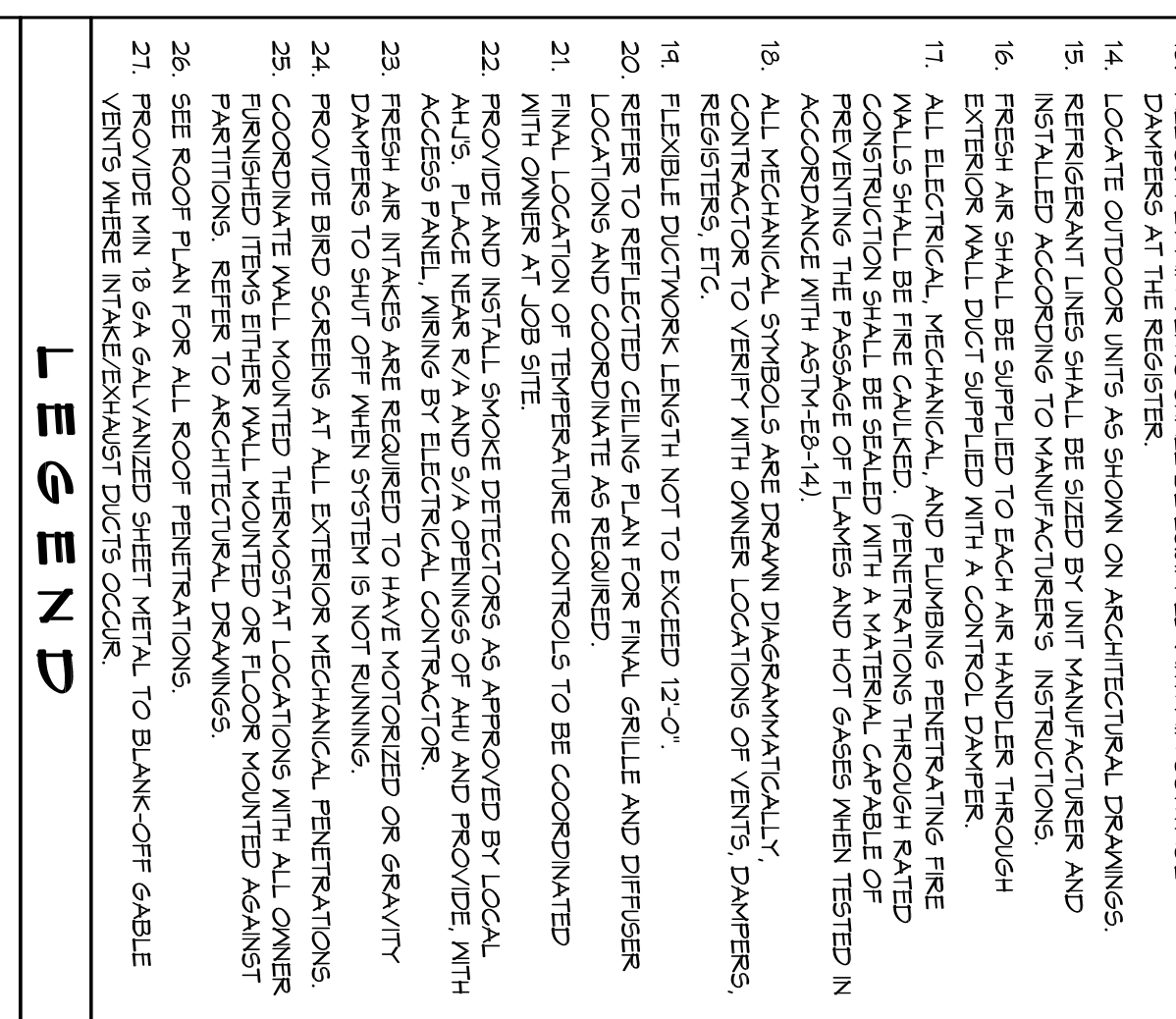
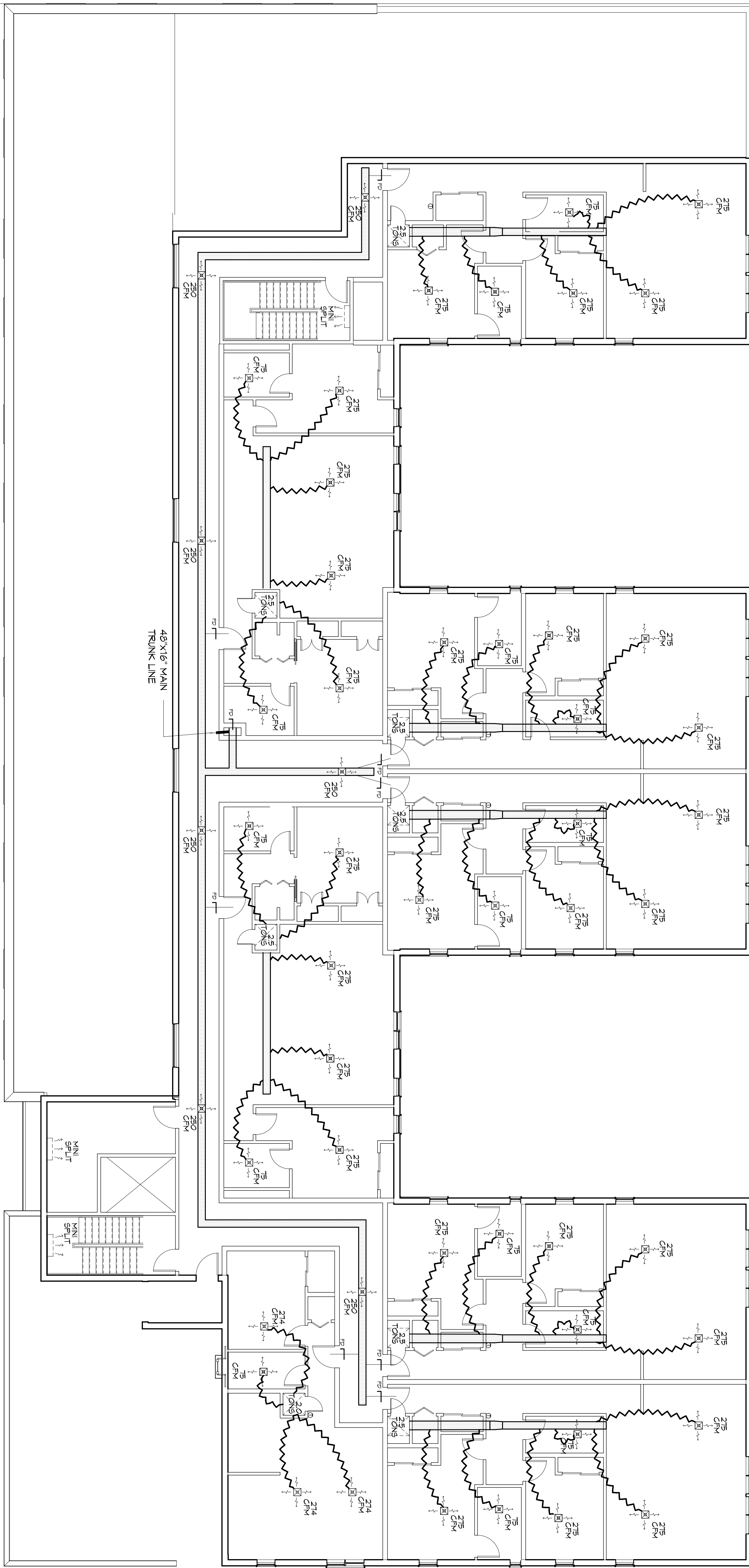


GENERAL HVAC NOTES

1. CONCEALED DUCTWORK TO BE GALVANIZED SHEET METAL LINED WITH FIBROUS GLASS DUCT LINER, MIN R-6, INSTALLED PER SMACNA STANDARDS.
2. EXPOSED DUCTWORK TO BE GALVANIZED SHEET METAL LINED WITH FIBROUS GLASS DUCT LINER, MIN R-6, INSTALLED PER SMACNA STANDARDS.
3. ROUND FLEXIBLE DUCT TO BE UL-181, CLASS 1, AIR DUCT MATERIALS.
4. DUCT SIZES SHOWN ARE CLEAR INSIDE DIMENSIONS.
5. IN ALL SYSTEMS OVER 2000 CFM AND LESS THAN 15,000 CFM, SMOKE DETECTORS SHALL BE INSTALLED IN ACCORDANCE WITH NFPA 72E IN THE RETURN DUCT DOWNSTREAM OF THE AIR HANDLING UNIT AND ALL FILTERS TO AUTOMATICALLY STOP THE FAN.
6. PROVIDE UL LISTED 1/2" F FRESH AIR RETURN AIR OF EACH SYSTEM UNDER 2000 CFM TO SHUT DOWN THE FAN IN THE EVENT OF FIRE.
7. PROVIDE UL RATED FIRE DAMPERS WHERE REQUIRED AT ALL DUCT PENETRATIONS THROUGH ROOF OR FLOOR/CEILING ASSEMBLIES INCLUDING OUTSIDE AIR INTAKES AND EXHAUST FANS.
8. COMPENSATE DRIP TO BE 3/4" PIPE RUN TO PLUMBERS P-TRAP WITHIN FIVE FEET OF AIR HANDLING UNITS.
9. ALL AIR HANDLING SYSTEMS TO BE BALANCED TO ACHIEVE PROPER AIR FLOW PER PLANS.
10. ALL THERMOSTATS TO BE AUTOMATIC CHANGES/ER WITH HEAT SWITCH.
11. EXHAUST FAN SHALL BE CONTROLLED BY A SWITCH ON THE WALL IN THE SAME LOCATION AS LIGHT SWITCHES. PROVIDE BACK DRIFT DAMPER.
12. PROVIDE AND INSTALL WATER PROOF GULLE VENT IN PROPER ROOF LOCATION FOR FLASHING THROUGH EXHAUST.
13. ALL SUPPLY AIR VENTS SHALL BE EQUIPPED WITH AIR CONTROL DAMPERS AT THE REGISTER.
14. LOCATE OUTDOOR UNITS AS SHOWN ON ARCHITECTURAL DRAWINGS.
15. REFRIGERANT LINES SHALL BE SIZED BY UNIT MANUFACTURER AND INSTALLED ACCORDING TO MANUFACTURER'S INSTRUCTIONS.
16. FRESH AIR SHALL BE SUPPLIED TO EACH AIR HANDLER THROUGH EXTERIOR WALL DUCT SHIPPED WITH A CONTROL DAMPER.
17. ALL ELECTRICAL, MECHANICAL, AND PLUMBING PENETRATING FREE FLOOR/CEILING ASSEMBLIES SHALL BE SEALED WITH KNITTED CABLE OR PREVENTING THE PASSAGE OF FLAMES AND HOT GASES WHEN TESTED IN ACCORDANCE WITH ASTM-E81-14).
18. ALL MECHANICAL SYMBOLS ARE DRAWN DIAGRAMMATICALLY. CONTRACTOR TO VERIFY WITH OWNER LOCATIONS OF VENTS, DAMPERS, REGISTER, ETC.
19. FLEXIBLE DUCTWORK LENGTH NOT TO EXCEED 12'-0".
20. REFER TO REFLECTED CEILING PLAN FOR FAN, GRILLE AND DIFFUSER LOCATIONS AND COORDINATE AS REQUIRED.
21. FINAL LOCATION OF TEMPERATURE CONTROLS TO BE COORDINATED WITH OWNER AT JOB SITE.
22. PROVIDE AND INSTALL SMOKE DETECTORS AS APPROVED BY LOCAL A.H.U.S. PLACE NEAR R/A AND S/A OPENINGS OF AHU AND PROVIDE WITH ACCESS PANEL, MARKING BY ELECTRICAL CONTRACTOR.
23. FRESH AIR INTAKES ARE REQUIRED TO HAVE NOTICED OR GRAVITY DAMPERS TO SHUT OFF WHEN SYSTEM IS NOT RUNNING.
24. PROVIDE BIRD SCREENS AT ALL EXTERIOR MECHANICAL PENETRATIONS.
25. COORDINATE WALL MOUNTED THERMOSTAT LOCATIONS WITH ALL OWNER FURNISHED ITEMS EITHER WALL MOUNTED OR FLOOR MOUNTED AGAINST PARTITIONS. REFER TO ARCHITECTURAL DRAWINGS.
26. SEE ROOF PLAN FOR ALL ROOF PENETRATIONS.
27. PROVIDE MIN 1/8 GA GALVANIZED SHEET METAL TO BLANK-OFF GABLE VENTS WHERE INTAKE/EXHAUST DUCTS OCCUR.



NOTES: 1) PROVIDE AT FLEXIBLE DUCT CONNECTION "HANDOUT" FROMBOARD ON THE INTERIOR FLEXIBLE DUCT HEAT. 2) PROVIDE MINIMUM 4" COLLARS FOR ATTACHMENT OF THE FLEXIBLE DUCT TO RIGID DUCT, DAMPERS AND DIFFUSERS. 3) PROVIDE RIGID DUCT INSULATION TO DUCT AND PROVIDE TAPE FOR INSULATION OVERLAP.



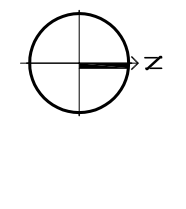
A/C UNIT SCHEDULE

| NO. | UNIT | CFM | 0.4 ELEC. VOLTAGE | COMMENTS |
|-----|---------------|-----|-------------------|----------|
| 25 | TON CONDENSER | 125 | 15 KW | LENNOX |
| 25 | TON CONDENSER | 125 | 15 KW | LENNOX |
| 25 | TON CONDENSER | 125 | 15 KW | LENNOX |
| 25 | TON CONDENSER | 125 | 15 KW | LENNOX |
| 25 | TON CONDENSER | 125 | 15 KW | LENNOX |
| 25 | TON CONDENSER | 125 | 15 KW | LENNOX |
| 25 | TON CONDENSER | 125 | 15 KW | LENNOX |
| 25 | TON CONDENSER | 125 | 15 KW | LENNOX |
| 25 | TON CONDENSER | 125 | 15 KW | LENNOX |
| 25 | TON CONDENSER | 125 | 15 KW | LENNOX |

MINI SPLIT UNITS

25 TON CONDENSER MODEL # XP14-030
 25 AR HANDLER MODEL # CBX514H-030
 20 TON CONDENSER MODEL # XP14-024
 25 AR HANDLER MODEL # CBX514H-024

MECHANICAL HVAC THIRD FLOOR



SCALE

MINI SPLIT UNITS

STAIRWELLS #1, #2 AND ELEVATOR EQUIPMENT ROOM SHALL BE MITSUBISHI INDOOR UNITS MODEL #MSZ-GA32NA, OUTDOOR UNITS MODEL #MUZ-GA24NA

A/C UNIT SCHEDULE

| NO. | UNIT | CFM | 0.4 ELEC. VOLTAGE | COMMENTS |
|-----|---------------|-----|-------------------|----------|
| 25 | TON CONDENSER | 125 | 15 KW | LENNOX |
| 25 | TON CONDENSER | 125 | 15 KW | LENNOX |
| 25 | TON CONDENSER | 125 | 15 KW | LENNOX |
| 25 | TON CONDENSER | 125 | 15 KW | LENNOX |
| 25 | TON CONDENSER | 125 | 15 KW | LENNOX |
| 25 | TON CONDENSER | 125 | 15 KW | LENNOX |
| 25 | TON CONDENSER | 125 | 15 KW | LENNOX |
| 25 | TON CONDENSER | 125 | 15 KW | LENNOX |
| 25 | TON CONDENSER | 125 | 15 KW | LENNOX |
| 25 | TON CONDENSER | 125 | 15 KW | LENNOX |

MINI SPLIT UNITS

STAIRWELLS #1, #2 AND ELEVATOR EQUIPMENT ROOM SHALL BE MITSUBISHI INDOOR UNITS MODEL #MSZ-GA32NA, OUTDOOR UNITS MODEL #MUZ-GA24NA

A/C UNIT SCHEDULE

| NO. | UNIT | CFM | 0.4 ELEC. VOLTAGE | COMMENTS |
|-----|---------------|-----|-------------------|----------|
| 25 | TON CONDENSER | 125 | 15 KW | LENNOX |
| 25 | TON CONDENSER | 125 | 15 KW | LENNOX |
| 25 | TON CONDENSER | 125 | 15 KW | LENNOX |
| 25 | TON CONDENSER | 125 | 15 KW | LENNOX |
| 25 | TON CONDENSER | 125 | 15 KW | LENNOX |
| 25 | TON CONDENSER | 125 | 15 KW | LENNOX |
| 25 | TON CONDENSER | 125 | 15 KW | LENNOX |
| 25 | TON CONDENSER | 125 | 15 KW | LENNOX |
| 25 | TON CONDENSER | 125 | 15 KW | LENNOX |
| 25 | TON CONDENSER | 125 | 15 KW | LENNOX |

MINI SPLIT UNITS

STAIRWELLS #1, #2 AND ELEVATOR EQUIPMENT ROOM SHALL BE MITSUBISHI INDOOR UNITS MODEL #MSZ-GA32NA, OUTDOOR UNITS MODEL #MUZ-GA24NA

A/C UNIT SCHEDULE

| NO. | UNIT | CFM | 0.4 ELEC. VOLTAGE | COMMENTS |
|-----|---------------|-----|-------------------|----------|
| 25 | TON CONDENSER | 125 | 15 KW | LENNOX |
| 25 | TON CONDENSER | 125 | 15 KW | LENNOX |
| 25 | TON CONDENSER | 125 | 15 KW | LENNOX |
| 25 | TON CONDENSER | 125 | 15 KW | LENNOX |
| 25 | TON CONDENSER | 125 | 15 KW | LENNOX |
| 25 | TON CONDENSER | 125 | 15 KW | LENNOX |
| 25 | TON CONDENSER | 125 | 15 KW | LENNOX |
| 25 | TON CONDENSER | 125 | 15 KW | LENNOX |
| 25 | TON CONDENSER | 125 | 15 KW | LENNOX |
| 25 | TON CONDENSER | 125 | 15 KW | LENNOX |

MINI SPLIT UNITS

STAIRWELLS #1, #2 AND ELEVATOR EQUIPMENT ROOM SHALL BE MITSUBISHI INDOOR UNITS MODEL #MSZ-GA32NA, OUTDOOR UNITS MODEL #MUZ-GA24NA

A/C UNIT SCHEDULE

| NO. | UNIT | CFM | 0.4 ELEC. VOLTAGE | COMMENTS |
|-----|---------------|-----|-------------------|----------|
| 25 | TON CONDENSER | 125 | 15 KW | LENNOX |
| 25 | TON CONDENSER | 125 | 15 KW | LENNOX |
| 25 | TON CONDENSER | 125 | 15 KW | LENNOX |
| 25 | TON CONDENSER | 125 | 15 KW | LENNOX |
| 25 | TON CONDENSER | 125 | 15 KW | LENNOX |
| 25 | TON CONDENSER | 125 | 15 KW | LENNOX |
| 25 | TON CONDENSER | 125 | 15 KW | LENNOX |
| 25 | TON CONDENSER | 125 | 15 KW | LENNOX |
| 25 | TON CONDENSER | 125 | 15 KW | LENNOX |
| 25 | TON CONDENSER | 125 | 15 KW | LENNOX |

MINI SPLIT UNITS

STAIRWELLS #1, #2 AND ELEVATOR EQUIPMENT ROOM SHALL BE MITSUBISHI INDOOR UNITS MODEL #MSZ-GA32NA, OUTDOOR UNITS MODEL #MUZ-GA24NA

A/C UNIT SCHEDULE

| NO. | UNIT | CFM | 0.4 ELEC. VOLTAGE | COMMENTS |
|-----|---------------|-----|-------------------|----------|
| 25 | TON CONDENSER | 125 | 15 KW | LENNOX |
| 25 | TON CONDENSER | 125 | 15 KW | LENNOX |
| 25 | TON CONDENSER | 125 | 15 KW | LENNOX |
| 25 | TON CONDENSER | 125 | 15 KW | LENNOX |
| 25 | TON CONDENSER | 125 | 15 KW | LENNOX |
| 25 | TON CONDENSER | 125 | 15 KW | LENNOX |
| 25 | TON CONDENSER | 125 | 15 KW | LENNOX |
| 25 | TON CONDENSER | 125 | 15 KW | LENNOX |
| 25 | TON CONDENSER | 125 | 15 KW | LENNOX |
| 25 | TON CONDENSER | 125 | 15 KW | LENNOX |

MINI SPLIT UNITS

STAIRWELLS #1, #2 AND ELEVATOR EQUIPMENT ROOM SHALL BE MITSUBISHI INDOOR UNITS MODEL #MSZ-GA32NA, OUTDOOR UNITS MODEL #MUZ-GA24NA

A/C UNIT SCHEDULE

| NO. | UNIT | CFM | 0.4 ELEC. VOLTAGE | COMMENTS |
|-----|---------------|-----|-------------------|----------|
| 25 | TON CONDENSER | 125 | 15 KW | LENNOX |
| 25 | TON CONDENSER | 125 | 15 KW | LENNOX |
| 25 | TON CONDENSER | 125 | 15 KW | LENNOX |
| 25 | TON CONDENSER | 125 | 15 KW | LENNOX |
| 25 | TON CONDENSER | 125 | 15 KW | LENNOX |
| 25 | TON CONDENSER | 125 | 15 KW | LENNOX |
| 25 | TON CONDENSER | 125 | 15 KW | LENNOX |
| 25 | TON CONDENSER | 125 | 15 KW | LENNOX |
| 25 | TON CONDENSER | 125 | 15 KW | LENNOX |
| 25 | TON CONDENSER | 125 | 15 KW | LENNOX |

MINI SPLIT UNITS

STAIRWELLS #1, #2 AND ELEVATOR EQUIPMENT ROOM SHALL BE MITSUBISHI INDOOR UNITS MODEL #MSZ-GA32NA, OUTDOOR UNITS MODEL #MUZ-GA24NA

A/C UNIT SCHEDULE

| NO. | UNIT | CFM | 0.4 ELEC. VOLTAGE | COMMENTS |
|-----|---------------|-----|-------------------|----------|
| 25 | TON CONDENSER | 125 | 15 KW | LENNOX |
| 25 | TON CONDENSER | 125 | 15 KW | LENNOX |
| 25 | TON CONDENSER | 125 | 15 KW | LENNOX |
| 25 | TON CONDENSER | 125 | 15 KW | LENNOX |
| 25 | TON CONDENSER | 125 | 15 KW | LENNOX |
| 25 | TON CONDENSER | 125 | 15 KW | LENNOX |
| 25 | TON CONDENSER | 125 | 15 KW | LENNOX |
| 25 | TON CONDENSER | 125 | 15 KW | LENNOX |
| 25 | TON CONDENSER | 125 | 15 KW | LENNOX |
| 25 | TON CONDENSER | 125 | 15 KW | LENNOX |

MINI SPLIT UNITS

STAIRWELLS #1, #2 AND ELEVATOR EQUIPMENT ROOM SHALL BE MITSUBISHI INDOOR UNITS MODEL #MSZ-GA32NA, OUTDOOR UNITS MODEL #MUZ-GA24NA

A/C UNIT SCHEDULE

| NO. | UNIT | CFM | 0.4 ELEC. VOLTAGE | COMMENTS |
|-----|---------------|-----|-------------------|----------|
| 25 | TON CONDENSER | 125 | 15 KW | LENNOX |
| 25 | TON CONDENSER | 125 | 15 KW | LENNOX |
| 25 | TON CONDENSER | 125 | 15 KW | LENNOX |
| 25 | TON CONDENSER | 125 | 15 KW | LENNOX |
| 25 | TON CONDENSER | 125 | 15 KW | LENNOX |
| 25 | TON CONDENSER | 125 | 15 KW | LENNOX |
| 25 | TON CONDENSER | 125 | 15 KW | LENNOX |
| 25 | TON CONDENSER | 125 | 15 KW | LENNOX |
| 25 | TON CONDENSER | 125 | 15 KW | LENNOX |
| 25 | TON CONDENSER | 125 | 15 KW | LENNOX |

MINI SPLIT UNITS

STAIRWELLS #1, #2 AND ELEVATOR EQUIPMENT ROOM SHALL BE MITSUBISHI INDOOR UNITS MODEL #MSZ-GA32NA, OUTDOOR UNITS MODEL #MUZ-GA24NA

A/C UNIT SCHEDULE

| NO. | UNIT | CFM | 0.4 ELEC. VOLTAGE | COMMENTS |
|-----|---------------|-----|-------------------|----------|
| 25 | TON CONDENSER | 125 | 15 KW | LENNOX |
| 25 | TON CONDENSER | 125 | 15 KW | LENNOX |
| 25 | TON CONDENSER | 125 | 15 KW | LENNOX |
| 25 | TON CONDENSER | 125 | 15 KW | LENNOX |
| 25 | TON CONDENSER | 125 | 15 KW | LENNOX |
| 25 | TON CONDENSER | 125 | 15 KW | LENNOX |
| 25 | TON CONDENSER | 125 | 15 KW | LENNOX |
| 25 | TON CONDENSER | 125 | 15 KW | LENNOX |
| 25 | TON CONDENSER | 125 | 15 KW | LENNOX |
| 25 | TON CONDENSER | 125 | 15 KW | LENNOX |

MINI SPLIT UNITS

STAIRWELLS #1, #2 AND ELEVATOR EQUIPMENT ROOM SHALL BE MITSUBISHI INDOOR UNITS MODEL #MSZ-GA32NA, OUTDOOR UNITS MODEL #MUZ-GA24NA

A/C UNIT SCHEDULE

| NO. | UNIT | CFM | 0.4 ELEC. VOLTAGE | COMMENTS |
|-----|---------------|-----|-------------------|----------|
| 25 | TON CONDENSER | 125 | 15 KW | LENNOX |
| 25 | TON CONDENSER | 125 | 15 KW | LENNOX |
| 25 | TON CONDENSER | 125 | 15 KW | LENNOX |
| 25 | TON CONDENSER | 125 | 15 KW | LENNOX |
| 25 | TON CONDENSER | 125 | 15 KW | LENNOX |
| 25 | TON CONDENSER | 125 | 15 KW | LENNOX |
| 25 | TON CONDENSER | 125 | 15 KW | LENNOX |
| 25 | TON CONDENSER | 125 | 15 KW | LENNOX |
| 25 | TON CONDENSER | 125 | 15 KW | LENNOX |
| 25 | TON CONDENSER | 125 | 15 KW | LENNOX |

MINI SPLIT UNITS

STAIRWELLS #1, #2 AND ELEVATOR EQUIPMENT ROOM SHALL BE MITSUBISHI INDOOR UNITS MODEL #MSZ-GA32NA, OUTDOOR UNITS MODEL #MUZ-GA24NA

A/C UNIT SCHEDULE

| NO. | UNIT | CFM | 0.4 ELEC. VOLTAGE | COMMENTS |
|-----|---------------|-----|-------------------|----------|
| 25 | TON CONDENSER | 125 | 15 KW | LENNOX |
| 25 | TON CONDENSER | 125 | 15 KW | LENNOX |
| 25 | TON CONDENSER | 125 | 15 KW | LENNOX |
| 25 | TON CONDENSER | 125 | 15 KW | LENNOX |
| 25 | TON CONDENSER | 125 | 15 KW | LENNOX |
| 25 | TON CONDENSER | 125 | 15 KW | LENNOX |
| 25 | TON CONDENSER | 125 | 15 KW | LENNOX |
| 25 | TON CONDENSER | 125 | 15 KW | LENNOX |
| 25 | TON CONDENSER | 125 | 15 KW | LENNOX |
| 25 | TON CONDENSER | 125 | 15 KW | LENNOX |

MINI SPLIT UNITS

STAIRWELLS #1, #2 AND ELEVATOR EQUIPMENT ROOM SHALL BE MITSUBISHI INDOOR UNITS MODEL #MSZ-GA32NA, OUTDOOR UNITS MODEL #MUZ-GA24NA

A/C UNIT SCHEDULE

| NO. | UNIT | CFM | 0.4 ELEC. VOLTAGE | COMMENTS |
|-----|---------------|-----|-------------------|----------|
| 25 | TON CONDENSER | 125 | 15 KW | LENNOX |
| 25 | TON CONDENSER | 125 | 15 KW | LENNOX |
| 25 | TON CONDENSER | 125 | 15 KW | LENNOX |
| 25 | TON CONDENSER | 125 | 15 KW | LENNOX |
| 25 | TON CONDENSER | 125 | 15 KW | LENNOX |
| 25 | TON CONDENSER | 125 | 15 KW | LENNOX |
| 25 | TON CONDENSER | 125 | 15 KW | LENNOX |
| 25 | TON CONDENSER | 125 | 15 KW | LENNOX |
| 25 | TON CONDENSER | 125 | 15 KW | LENNOX |
| 25 | TON CONDENSER | 125 | 15 KW | LENNOX |

MINI SPLIT UNITS

STAIRWELLS #1, #2 AND ELEVATOR EQUIPMENT ROOM SHALL BE MITSUBISHI INDOOR UNITS MODEL #MSZ-GA32NA, OUTDOOR UNITS MODEL #MUZ-GA24NA

A/C UNIT SCHEDULE

| NO. | UNIT | CFM | 0.4 ELEC. VOLTAGE | COMMENTS |
|-----|---------------|-----|-------------------|----------|
| 25 | TON CONDENSER | 125 | 15 KW | LENNOX |
| 25 | TON CONDENSER | 125 | 15 KW | LENNOX |
| 25 | TON CONDENSER | 125 | 15 KW | LENNOX |
| 25 | TON CONDENSER | 125 | 15 KW | LENNOX |
| 25 | TON CONDENSER | 125 | 15 KW | LENNOX |
| 25 | TON CONDENSER | 125 | 15 KW | LENNOX |
| 25 | TON CONDENSER | 125 | 15 KW | LENNOX |
| 25 | TON CONDENSER | 125 | 15 KW | LENNOX |
| 25 | TON CONDENSER | 125 | 15 KW | LENNOX |
| 25 | TON CONDENSER | 125 | 15 KW | LENNOX |

MINI SPLIT UNITS

STAIRWELLS #1, #2 AND ELEVATOR EQUIPMENT ROOM SHALL BE MITSUBISHI INDOOR UNITS MODEL #MSZ-GA32NA, OUTDOOR UNITS MODEL #MUZ-GA24NA

A/C UNIT SCHEDULE

| NO. | UNIT | CFM | 0.4 ELEC. VOLTAGE | COMMENTS |
|-----|---------------|-----|-------------------|----------|
| 25 | TON CONDENSER | 125 | 15 KW | LENNOX |
| 25 | TON CONDENSER | 125 | 15 KW | LENNOX |
| 25 | TON CONDENSER | 125 | 15 | |