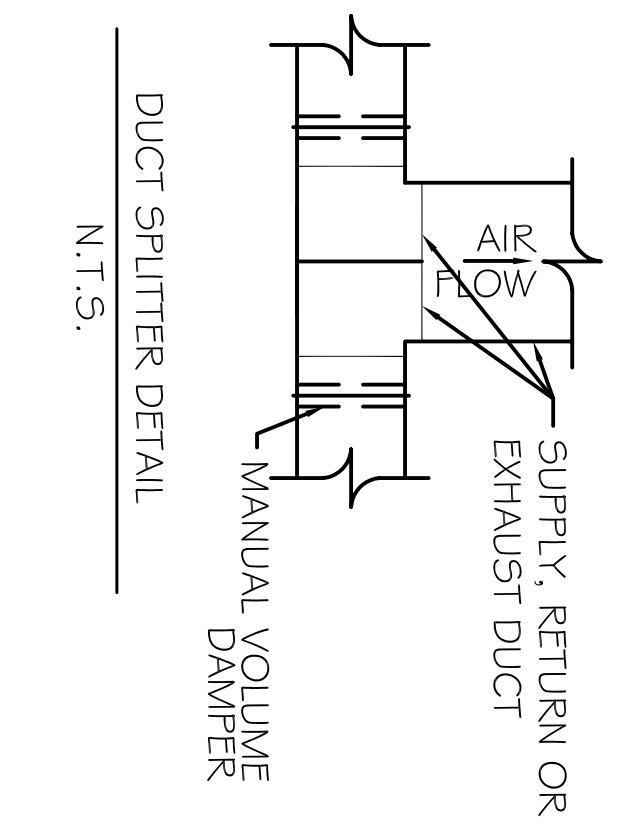
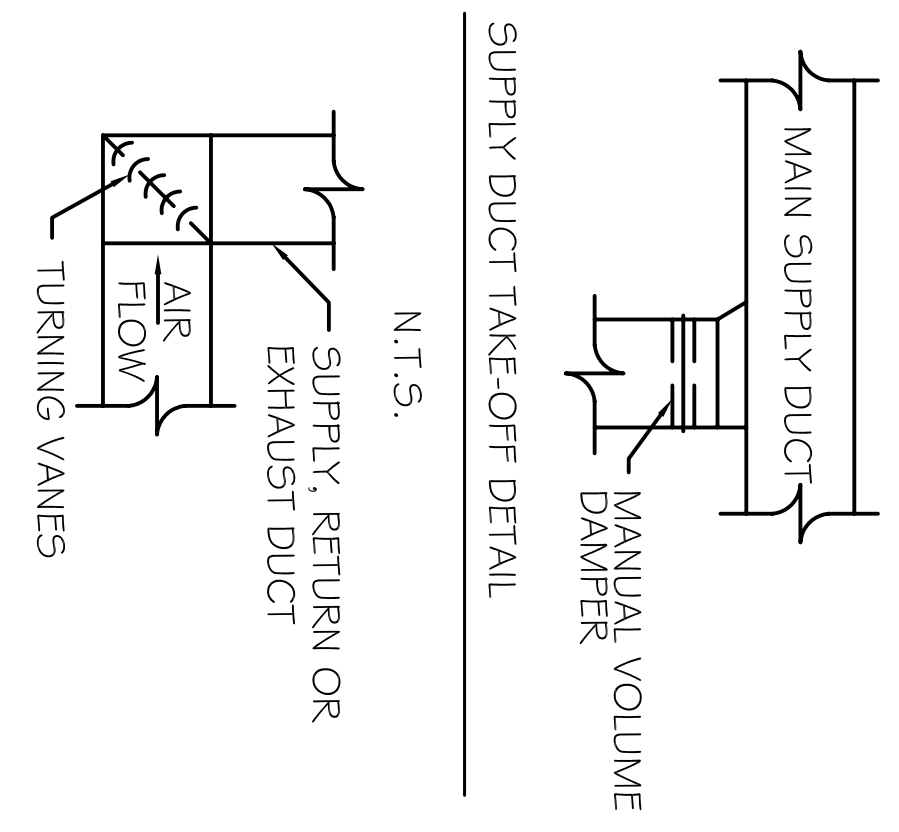


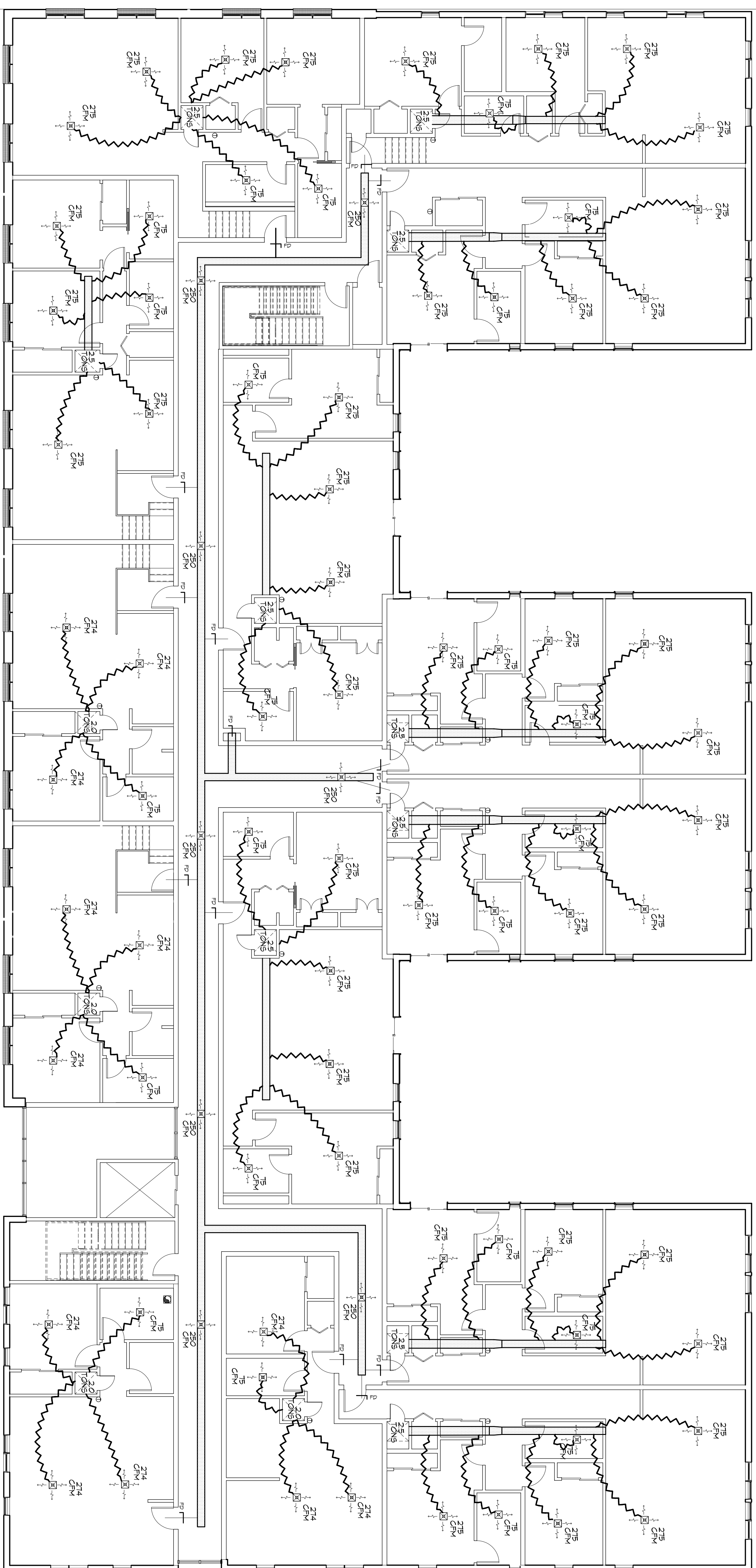
DIFFUSER CONNECTION DETAIL-FLEX DUCT  
N.T.S.



DUCT SPLITTER DETAIL  
N.T.S.



SQUARE ELBOW DETAIL  
N.T.S.

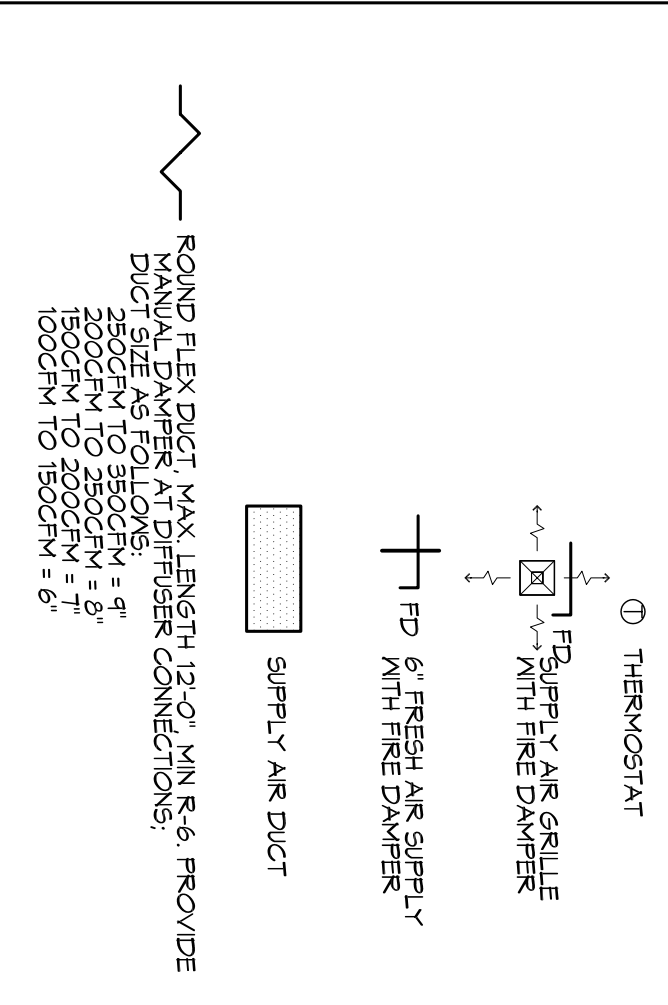


MECHANICAL HYAC SECOND FLOOR  
SCALE

**GENERAL HYAC NOTES**

1. CONCEALED DUCTWORK TO BE GALVANIZED SHEET METAL LINED WITH FIBROX GLASS DUCT LINER, MIN R-6. INSTALLED PER SMOAKA STANDARDS.
2. EXPOSED DUCTWORK TO BE GALVANIZED SHEET METAL LINED WITH FIBROX GLASS DUCT LINER, MIN R-6. INSTALLED PER SMOAKA STANDARDS.
3. ROUND FLEXIBLE DUCT TO BE UL-181 CLASS 1, AIR DUCT MATERIALS.
4. DUCT SIZES SHOWN ARE CLEAR INSIDE DIMENSIONS.
5. IN ALL SYSTEMS OVER 2000 CFM AND LESS THAN 15,000 CFM, SMOKE EXHAUST SYSTEMS SHALL BE INSTALLED PER SMOAKA STANDARDS. IN ALL SYSTEMS UNDER 2000 CFM, SMOKE EXHAUST SYSTEMS SHALL BE INSTALLED PER SMOAKA STANDARDS. ALL SYSTEMS SHALL BE INSTALLED PER SMOAKA STANDARDS.
6. PROVIDE UL LISTED 125° F. FIRE-RATED N. RETURN AIR OF EACH SYSTEM UNDER 2000 CFM TO SHUT DOWN THE FAN IN THE EVENT OF FIRE PENETRATIONS OF FIRE-RATED ASSEMBLIES AND WHERE REQUIRED BY CODE, INCLUDING OUTSIDE AIR INTAKES AND EXHAUST FANS.
7. PROVIDE UL RATED FIRE DAMPERS WHERE REQUIRED AT ALL DUCT PENETRATIONS OF FIRE-RATED ASSEMBLIES AND WHERE REQUIRED BY CODE, INCLUDING OUTSIDE AIR INTAKES AND EXHAUST FANS.
8. CONDENSATE DRAINS TO BE PVC PIPE RUN TO FLOWERS P-TAP WITHIN FIVE FEET OF AIR HANDLING UNITS.
9. ALL AIR HANDLING SYSTEMS TO BE BALANCED TO ASSURE PROPER AIR FLOWS PER PLANS.
10. ALL THERMOSTATS TO BE AUTOMATIC CHANGED/OVER WITH HEAT SWITCH.
11. EXHAUST FAN SHALL BE CONTROLLED BY A SWITCH ON THE WALL IN THE SAME LOCATION AS LIGHT SWITCHES. PROVIDE BACK DRAFT DAMPER.
12. PROVIDE AND INSTALL WATER PROOF GILLETTE VENT IN PROPER ROOF LOCATION FOR PLUMBING FIXTURE EXHAUST.
13. ALL SUPPLY AIR VENTS SHALL BE EQUIPPED WITH AIR CONTROL DAMPERS AT THE REGISTER.
14. LOCATE OUTDOOR UNITS AS SHOWN ON ARCHITECTURAL DRAWINGS.
15. REFRIGERANT LINES SHALL BE SIZED BY MINT MANUFACTURER AND INSTALLED ACCORDING TO MANUFACTURER'S INSTRUCTIONS.
16. FRESH AIR SHALL BE SUPPLIED TO EACH AIR HANDLER THROUGH EXTERIOR WALL DUCT SUPPLIED WITH A CONTROL DAMPER.
17. ALL ELECTRICAL, MECHANICAL, AND PLUMBING PENETRATING FIRE WALLS SHALL BE FIRE CALKED. (PENETRATIONS THROUGH RATED CONSTRUCTION SHALL BE SEALED WITH A MATERIAL CAPABLE OF PREVENTING THE PASSAGE OF FLAMES AND HOT GASES WHEN TESTED IN ACCORDANCE WITH ASTM E9-14).
18. ALL MECHANICAL SYMBOLS ARE DRAWN UNLESS OTHERWISE SPECIFIED. CONTRACTOR TO VERIFY WITH OWNER LOCATIONS OF VENTS, DAMPERS, REGISTERS, ETC.
19. FLEXIBLE DUCTWORK LENGTH NOT TO EXCEED 12'-0".
20. REFER TO REFLECTED CEILING PLAN FOR FINAL GRILLE AND DIFFUSER LOCATION AND COORDINATE AS REQUIRED.
21. FINAL LOCATION OF TEMPERATURE CONTROLS TO BE COORDINATED WITH OWNER AT JOB SITE.
22. PROVIDE AND INSTALL SMOKE DETECTORS AS APPROVED BY LOCAL A.U.S. PLACE NEAR R/A AND S/A OPENINGS OF A/JU AND PROVIDE WITH ACCESS PANEL, MARKING BY ELECTRICAL CONTRACTOR.
23. FRESH AIR INTAKES ARE REQUIRED TO HAVE WINDSCREENS OR GRAVITY DAMPERS TO SHUT OFF WHEN SYSTEM IS NOT RUNNING.
24. PROVIDE BRD SCREENS AT ALL EXTERIOR MECHANICAL PENETRATIONS.
25. COORDINATE WALL MOUNTED THERMOSTAT LOCATIONS WITH ALL OWNER FINISHES. REFER TO ARCHITECTURAL DRAWINGS.
26. SEE ROOF PLAN FOR ALL ROOF PENETRATIONS.
27. PROVIDE MIN 18 GA GALVANIZED SHEET METAL TO BLANK-OFF GABLE VENTS WHERE IN TAKE EXHAUST DUCT'S OCCUR.

**LEGEND**



A/C UNIT SCHEDULE				
NO	TOTAL CFM	COIL ELEC TOTAL	COMMENTS	
30	2000	120	15 KW	48 AMP LENOX
25	1000	60	5 KW	30 AMP LENOX

- 25 TON CONDENSER MODEL # XP14-030
- 25 AIR HANDLER MODEL # CBX25H-030
- 20 TON CONDENSER MODEL # XP14-024
- 25 AIR HANDLER MODEL # CBX25H-024

In joint venture with:

**DAMMON ENGINEERING INC.**  
Architects & Engineers

Chief Engineer: Brian Mitchell, PE  
554 Old Spanish Trail  
Slidell, LA 70458  
www.dammonengineering.com  
info@dammonengineering.com  
PH: 985.649.5832  
F: 985.641.5900

architecture + planning + interiors  
1111 Poydras Street  
New Orleans, LA 70130  
504.593.9074 tel  
www.studio2to.com

1581 MAGAZINE STREET  
New Orleans, Louisiana 70130

Drawn By: \_\_\_\_\_  
Author: \_\_\_\_\_  
Sheet: \_\_\_\_\_  
Comments: \_\_\_\_\_

Revisions: \_\_\_\_\_  
Issue Purpose: \_\_\_\_\_  
Date: \_\_\_\_\_

Permit: \_\_\_\_\_  
Documents: \_\_\_\_\_  
MECHANICAL: \_\_\_\_\_  
HVAC: \_\_\_\_\_  
SECOND FLOOR: \_\_\_\_\_  
7/16/2015

M103

©2014 STUDIO2TO