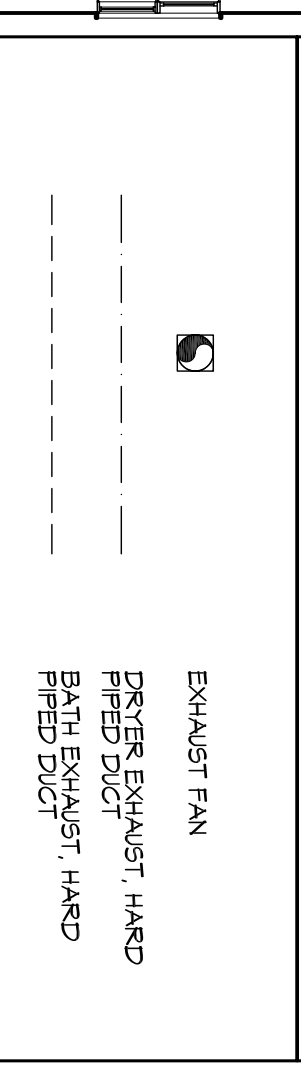


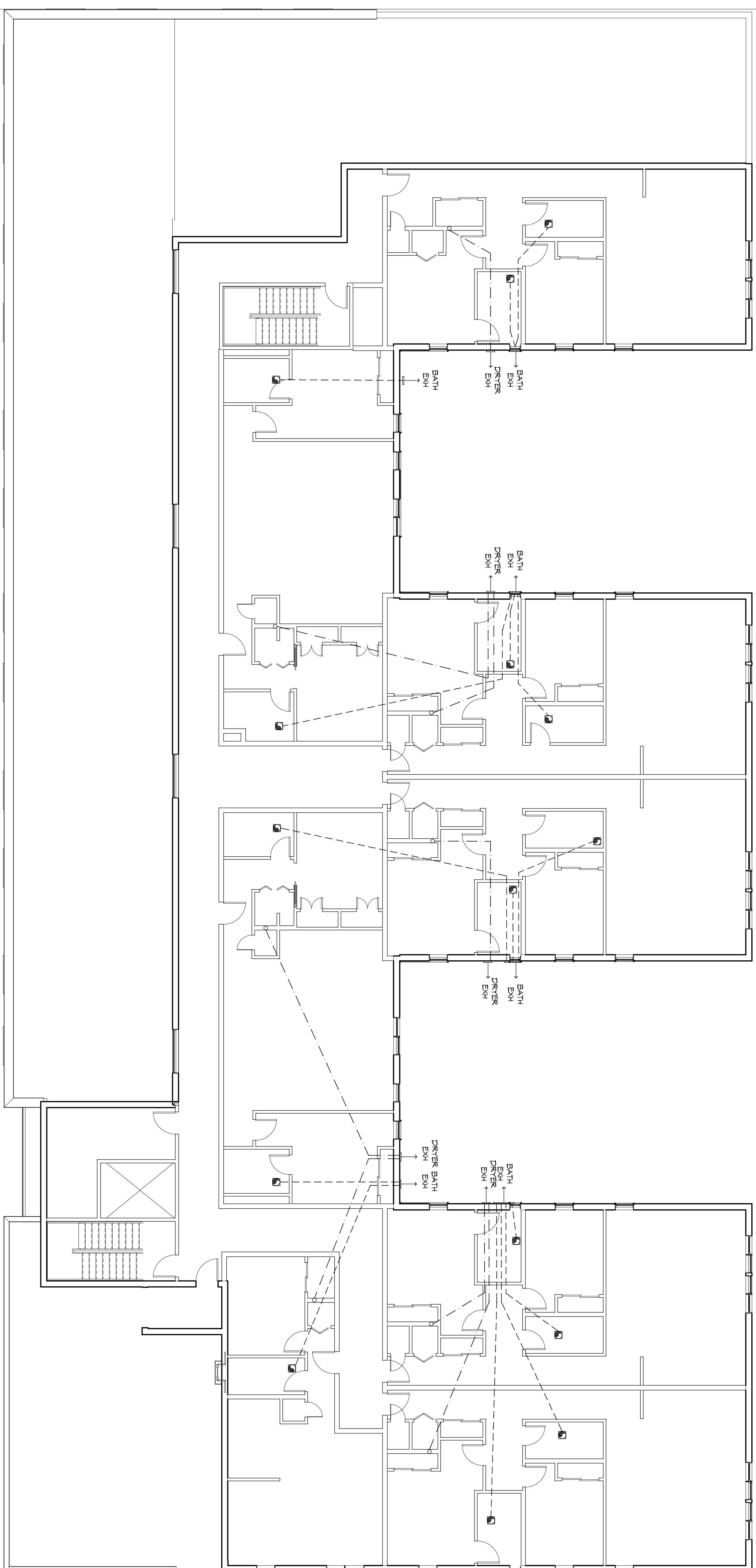
GENERAL HVAC NOTES

1. CONCEALED DUCTWORK TO BE GALVANIZED SHEET METAL LINED WITH FIBROUS GLASS DUCT LINER, MIN R-6, INSTALLED PER SMACNA STANDARDS.
2. EXPOSED DUCTWORK TO BE GALVANIZED SHEET METAL LINED WITH FIBROUS GLASS DUCT LINER, MIN R-6, INSTALLED PER SMACNA STANDARDS.
3. ROUND FLEXIBLE DUCT TO BE UL-181, CLASS 1, AIR DUCT MATERIALS.
4. DUCT SIZES SHOWN ARE CLEAR INSIDE DIMENSIONS.
5. IN ALL SYSTEMS OVER 2000 CFM AND LESS THAN 15,000 CFM, SMOKE REMOVAL SHALL BE PROVIDED THROUGH THE MAIN EXHAUST FAN IN THE RETURN DUCT DOWNSTREAM OF THE AIR HANDLING UNIT AND ALL FILTERS TO AUTOMATICALLY STOP THE FAN.
6. PROVIDE UL LISTED 125 °F FRESH AIR INTAKE AIR OF EACH SYSTEM UNDER 2000 CFM TO SHUT DOWN THE FAN IN THE EVENT OF FIRE PENETRATIONS OF FIRE-RATED ASSEMBLIES AND WHERE REQUIRED BY CODE, INCLUDING OUTSIDE AIR INTAKES AND EXHAUST FANS.
7. CONDENSATE DRAINS TO BE PVC PIPE RUN TO FLOWERS P-TRAP WITHIN FIVE FEET OF AIR HANDLING UNITS.
8. ALL AIR HANDLING SYSTEMS TO BE BALANCED TO ASSURE PROPER AIR FLOWS PER PLANS.
9. ALL THERMOSTATS TO BE AUTOMATIC CHANGEOVER WITH HEAT SWITCH.
10. EXHAUST FAN SHALL BE CONTROLLED BY A SWITCH ON THE WALL IN THE SAME LOCATION AS LIGHT SWITCH(S). PROVIDE BACK DRAFT DAMPER, PROVIDE AND INSTALL WATER PROOF GILLETTE VENT IN PROPER ROOF LOCATION FOR PUMPING FIXTURE EXHAUST.
11. ALL SUPPLY AIR VENTS SHALL BE EQUIPPED WITH AIR CONTROL DAMPERS AT THE REGISTER.
12. LOCATE OUTDOOR UNITS AS SHOWN ON ARCHITECTURAL DRAWINGS.
13. REFRIGERANT LINES SHALL BE SIZED BY UNIT MANUFACTURER AND INSTALLED ACCORDING TO MANUFACTURER'S INSTRUCTIONS.
14. FRESH AIR SHALL BE SUPPLIED TO EACH AIR HANDLER THROUGH EXTERIOR WALL DUCT SUPPLIED WITH A CONTROL DAMPER.
15. ALL ELECTRICAL, MECHANICAL, AND PLUMBING PENETRATING FIRE WALLS SHALL BE FIRE CALKED. PENETRATIONS THROUGH RATED CONSTRUCTION SHALL BE SEALED WITH A MATERIAL CAPABLE OF PREVENTING THE PASSAGE OF FLAMES AND HOT GASES WHEN TESTED IN ACCORDANCE WITH ASTM E9-14.
16. ALL MECHANICAL SYMBOLS ARE DRAWN DISASSEMBLY/REASSEMBLY TO VERIFY WITH OWNER LOCATIONS OF VENTS, DAMPERS, REGISTERES, ETC.
17. FLEXIBLE DUCTWORK LENGTH NOT TO EXCEED 12'-0".
18. REFER TO REFLECTED CEILING PLAN FOR FINAL GRILLE AND DIFFUSER LOCATION AND COORDINATE AS REQUIRED.
19. FINAL LOCATION OF TEMPERATURE CONTROLS TO BE COORDINATED WITH OWNER AT JOB SITE.
20. PROVIDE AND INSTALL SMOKE DETECTORS AS APPROVED BY LOCAL A.U.S. PLACE NEAR R/A AND S/A OPENINGS OF A/JU AND PROVIDE WITH ACCESS PANEL, RATING BY ELECTRICAL CONTRACTOR.
21. FRESH AIR INTAKES ARE REQUIRED TO HAVE WINDING OR GRAVITY DAMPERS TO SHUT OFF WHEN SYSTEM IS NOT RUNNING.
22. COORDINATE WALL MOUNTED THERMOSTAT LOCATIONS WITH ALL OWNER FINISHED ITEMS EITHER WALL MOUNTED OR FLOOR MOUNTED AGAINST PARTITIONS. REFER TO ARCHITECTURAL DRAWINGS.
23. SEE ROOF PLAN FOR ALL ROOF PENETRATIONS.
24. PROVIDE MIN 18 GA GALVANIZED SHEET METAL TO BLANK-OFF GABLE VENTS WHERE IN TAKE EXHAUST DUCTS OCCUR.

LEGEND



FAN NO.	CFM	VOLTAGE	TYPE
EF-1	75	120	VENT



MECHANICAL EXHAUST THIRD FLOOR

SCALE

In joint venture with:

DAMMON

ENGINEERING, INC.

Architects & Engineers
 Chief Engineer: Brian Mutch, PE
 554 Old Spanish Trail
 Slidell, LA 70458
 www.dammonengineering.com
 info@dammonengineering.com
 Ph: 985.649.5832
 F: 985.641.3750

architecture + planning + interiors
 1119 Tchoupitoulas Street
 New Orleans, LA 70130
 504.593.9074 tel
 www.studio2to.com

1581 MAGAZINE STREET

New Orleans, Louisiana 70130

Revisions:	Issue Purpose:	Date:	<p style="font-size: 2em; font-weight: bold;">M106</p> <p>2014 4/24/2014</p>
Permit Documents MECHANICAL EXHAUST THIRD FLOOR 7/16/2015			