



Project Summary

Project Summary

	<u>Interior</u>	<u>Exterior</u>	<u>Project</u>
Total Area:	0.00 sq. ft.	1381293.00 sq. ft.	1381293.00 sq. ft.
Connected Load:	0.00 W	9600.00 W	9600.00 W
Unit Power Density:	0.00 W/sq. ft.	0.007 W/sq. ft.	0.007 W/sq. ft.
Total Budget:	\$0.00	\$0.00	\$0.00

Interior Analysis

	<u>Actual Ill.*</u>	<u>Target Ill.*</u>	<u>Actual</u>	<u>Target</u>	<u>Total</u>	<u>% Int. Load</u>	<u>Total</u>	<u>% Int. Cost</u>
*Illuminance units: fc								
Zonal cavity illuminance does not take into account								
objects within the space, or daylighting.								
**Unit Power Density units: W/sq. ft.								

Luminaire Analysis

<u>Type</u>	<u>Quantity</u>	<u>Load (W)</u>	<u>Total Load(W)</u>	<u>% of Prj. Load</u>	<u>Cost (\$)</u>	<u>Total Cost(\$)</u>	<u>% of Prj. Cost</u>
P2	17	400.0	6800.0	70.83%	\$0.00	\$0.00	0.00%
P3	7	400.0	2800.0	29.17%	\$0.00	\$0.00	0.00%
S3	0	400.0	0.0	0.00%	\$0.00	\$0.00	0.00%
S4	0	400.0	0.0	0.00%	\$0.00	\$0.00	0.00%



Luminaire Schedule

Type	Symbol	Brand Name	Catalog Number	Description	Lamp	Lamp Wattage
P2		Lytepoles	910-4011-25-DB-T2	1(S3) on a 25. foot pole with a 2. foot pedestal		
P3		Lytepoles	910-4011-25-DB-T2	1(S4) on a 25. foot pole with a 2. foot pedestal		
S3	<input type="checkbox"/>	Hadco	PA3_3_400H	PA3 Large AreaLyte	400W BT/ED/E-17	400
S4	<input type="checkbox"/>	Hadco	PA3_2_400H	PA3 Large AreaLyte	400W BT/ED/E-17	400



Room / Site Summary

Site

Calculation Summary

	<u>Attained</u>	<u>Target</u>
Zonal Cavity Illum*:	N/A fc	N/A fc
Unit Power Density:	0.007 W/sq. ft.	N/A W/sq. ft.

*Zonal cavity illuminance does not take into account objects within the space, or daylighting.

Area Summary

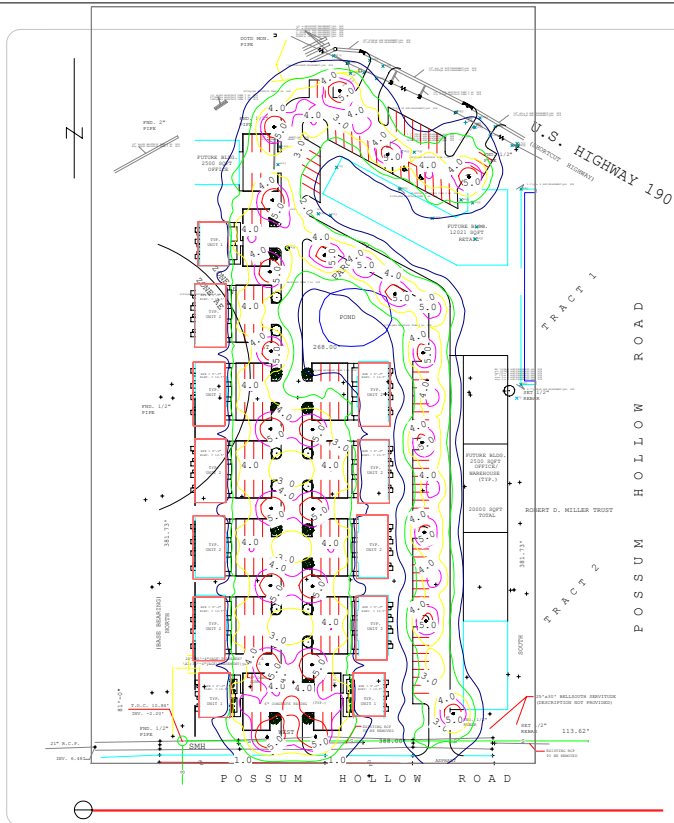
Overall Size:	1439.423 ft x 959.616 ft x N/A ft
Reflectances:	Ceiling: N/A
	Walls: N/A
	Floor: N/A
Total Cost:	\$0.00

Luminaire Type Summary

<u>Type</u>	<u>Catalog Number</u>	<u>Quantity</u>
P2	Lytepoles 910-4011-25-DB-T2	17
P3	Lytepoles 910-4011-25-DB-T2	7

Luminaire Location Summary

<u>Type</u>	<u>X</u>	<u>Y</u>	<u>Z</u>	<u>Orient</u>	<u>Tilt</u>	<u>Spin</u>	<u>AimX</u>	<u>AimY</u>	<u>AimZ</u>	<u>LLF</u>	<u>Tilt Factor</u>
P2	395.60	388.51	0.00	90.00	0.00	0.00	n/a	n/a	n/a		
P2	348.73	389.14	0.00	270.00	0.00	0.00	n/a	n/a	n/a		
P2	394.89	478.00	0.00	90.00	0.00	0.00	n/a	n/a	n/a		
P2	394.89	301.15	0.00	90.00	0.00	0.00	n/a	n/a	n/a		
P2	348.02	478.63	0.00	270.00	0.00	0.00	n/a	n/a	n/a		
P2	348.02	301.79	0.00	270.00	0.00	0.00	n/a	n/a	n/a		
P2	348.73	566.70	0.00	270.00	0.00	0.00	n/a	n/a	n/a		
P2	347.31	656.19	0.00	270.00	0.00	0.00	n/a	n/a	n/a		
P2	350.15	737.15	0.00	270.00	0.00	0.00	n/a	n/a	n/a		
P2	344.47	213.01	0.00	270.00	0.00	0.00	n/a	n/a	n/a		
P2	351.75	819.62	0.00	88.59	0.00	0.00	n/a	n/a	n/a		
P2	394.47	212.60	0.00	90.00	0.00	0.00	n/a	n/a	n/a		
P2	554.24	157.30	0.00	-90.00	0.00	0.00	n/a	n/a	n/a		
P2	343.97	130.62	0.00	0.00	0.00	0.00	n/a	n/a	n/a		
P2	398.64	130.99	0.00	0.00	0.00	0.00	n/a	n/a	n/a		
P2	571.92	763.09	0.00	300.53	0.00	0.00	n/a	n/a	n/a		
P2	426.02	860.74	0.00	179.78	0.00	0.00	n/a	n/a	n/a		
P3	522.98	261.82	0.00	90.00	0.00	0.00	n/a	n/a	n/a		
P3	521.15	362.03	0.00	90.00	0.00	0.00	n/a	n/a	n/a		
P3	518.71	463.46	0.00	90.00	0.00	0.00	n/a	n/a	n/a		
P3	480.07	788.29	0.00	30.87	0.00	0.00	n/a	n/a	n/a		
P3	519.86	564.81	0.00	90.00	0.00	0.00	n/a	n/a	n/a		
P3	408.45	674.89	0.00	29.80	0.00	0.00	n/a	n/a	n/a		
P3	488.03	631.13	0.00	29.80	0.00	0.00	n/a	n/a	n/a		



LEGAL DESCRIPTION
 PARCEL 2 OF ABNEY 2/D
 SEC. 13 T-7-N-6 R-14-E
 ST. TAMMANY PARISH
 LOUISIANA

LEGAL DESCRIPTION
 PARCEL 2 OF ABNEY 2/D
 SEC. 13 T-7-N-6 R-14-E
 ST. TAMMANY PARISH
 LOUISIANA

LEGAL DESCRIPTION
 PARCEL 2 OF ABNEY 2/D
 SEC. 13 T-7-N-6 R-14-E
 ST. TAMMANY PARISH
 LOUISIANA

DAMON ENGINEERING, INC.
 1015 PINE HAVEN DRIVE SUITE 200 METairie, LA 70002
 (504) 885-8888

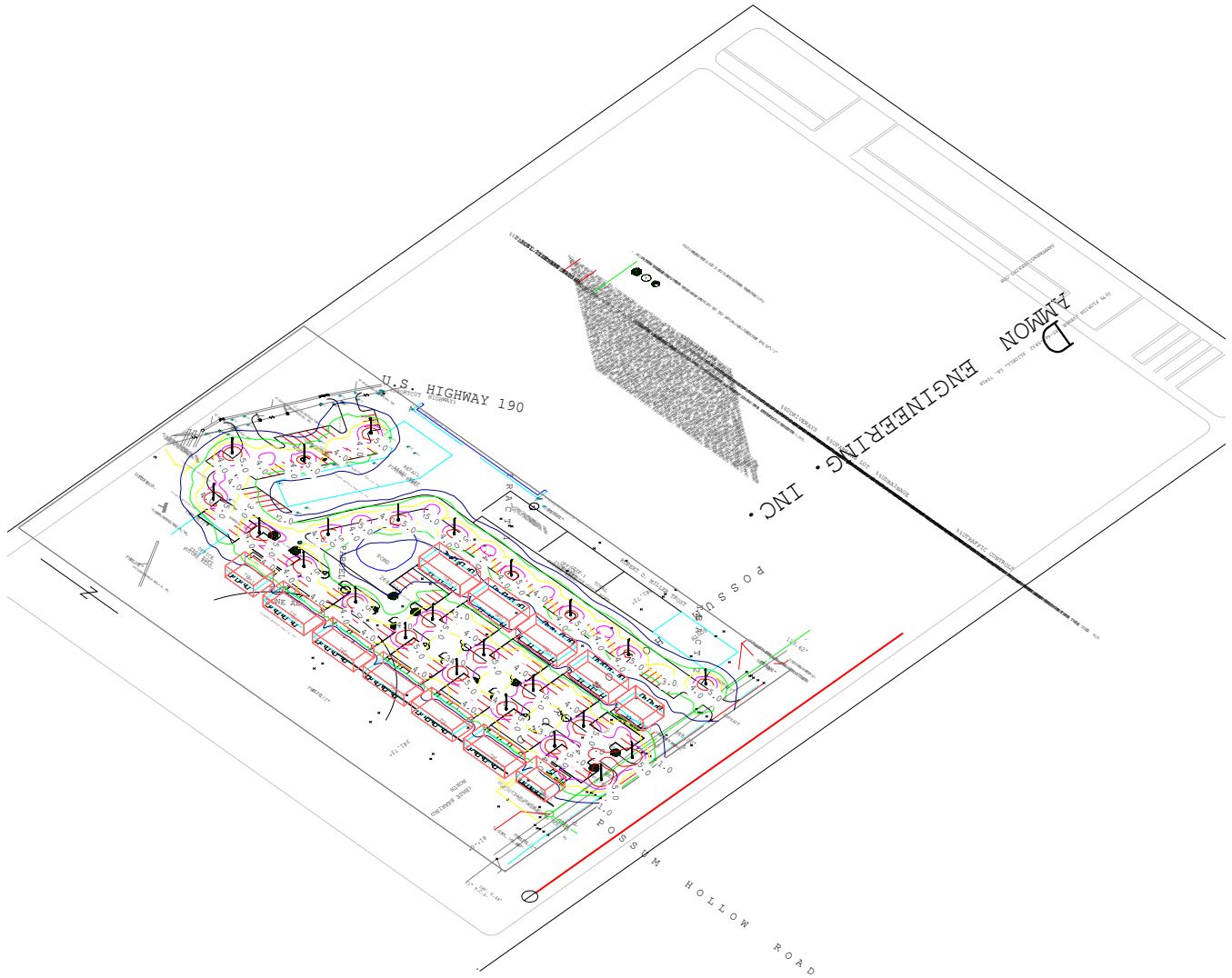
Site Plan View
 Scale: Scale to Fit



Lightolier Gulfcoast

New Orleans, LA

2/17/2005 Prepared for:



Site Isometric View

Scale: Scale to Fit



Lightolier Gulfcoast

New Orleans, LA

2/17/2005

Prepared for: