

GeoScapes™

Architectural Wall Mounted Luminaire Series 1 Low Wattage

APPLICATIONS

- Ideal for Schools, Malls, Office Buildings, Industrial Parks, Hospitals, Sports Complexes, and Commercial Centers.

CONSTRUCTION

- Heavy duty die cast aluminum housing and hinged door.
- Corrosion resistant Duraplex II Wrinkle Bronze polyester powder coated finish.
- Optional designer finishes available. See inside back cover of ExceLine catalog.
- Stainless steel Torx head T25 tamperproof hardware.

ELECTRICAL

- Core/coil HID CWA or HX/HPF Class H(180° C) ballasts.
- Spring-loaded 4KV pulse rated HID socket-medium base.
- Electronic HPF 4-pin PLT ballasts: >.95Pf, <10% THD.
- Hinged ballast tray with handle.
- Starting temperature: LX(HPS)-40° F/-40° C, MA(MH)-20° F/-30° C.
- **Pulse Start compatible.** See chart in the Energy Saving Products section.

OPTICS

- Full 90° horizontal cutoff on all distributions.
- Formed and polished and/or segmented specular aluminum reflectors.
- TruForm™ prismatic glass or tempered flat glass lens.
- Type 1, 2, 3, 3X, 4 or 4X distributions.

MOUNTING

- Direct or indirect orientation.
- Pre-mountable wall box with integral splice chamber.
- Built-in bubble level for accuracy.
- Hands-free fixture to wall positioning for wiring.

WARRANTY/LISTINGS

- UL 1598 wet location listed in either orientation.
- Published five year limited warranty.

OPTIONS & ACCESSORIES — SEE END OF THIS SECTION.

PHOTOMETRICS — SEE REVERSE SIDE.

ORDERING GUIDE EXAMPLE: GS1D51MAL-6

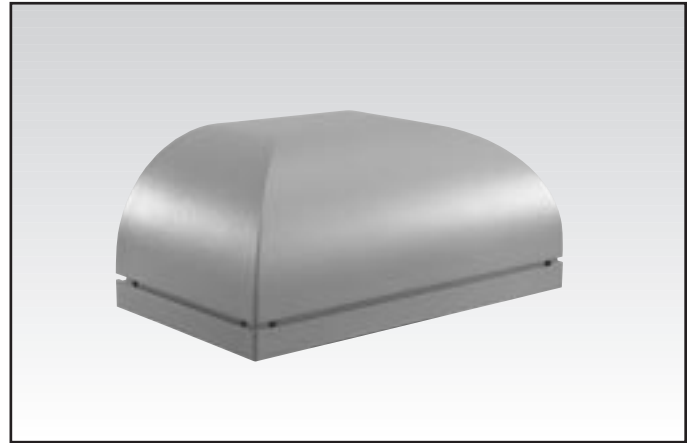
GS	1	D	5	1	MA	L		6
GS	1					L		

Name	Shape	Orientation	Wattage	Distribution	Source	Lamp	Options	Voltage
GS= GeoScapes	1= Series 1	D= Down U= Up	5= 50(ED17) ¹ 7= 70(ED17) ¹ 10= 100(ED17) ¹ 15= 150(ED17) 17= 175(ED17)	1= Very Wide Throw 2= Wide Throw 3= Medium Throw 3X= Medium Throw Maximum 4= Forward Throw 4X= Forward Throw Maximum	MA HF IN	L (Included and Installed)	See options/acc's end of section.	1=120 2=208 3=240 4=277 5=480 6=120/277 8=120-277

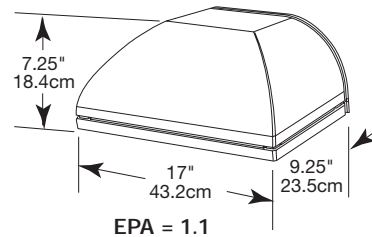
Product information is subject to change without notice.

¹Voltage is 6(120/277) ballast only.

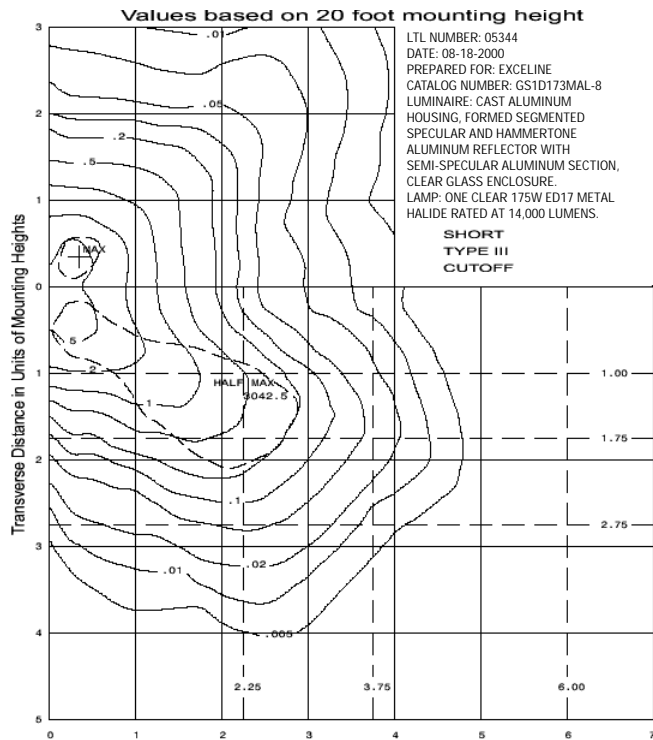
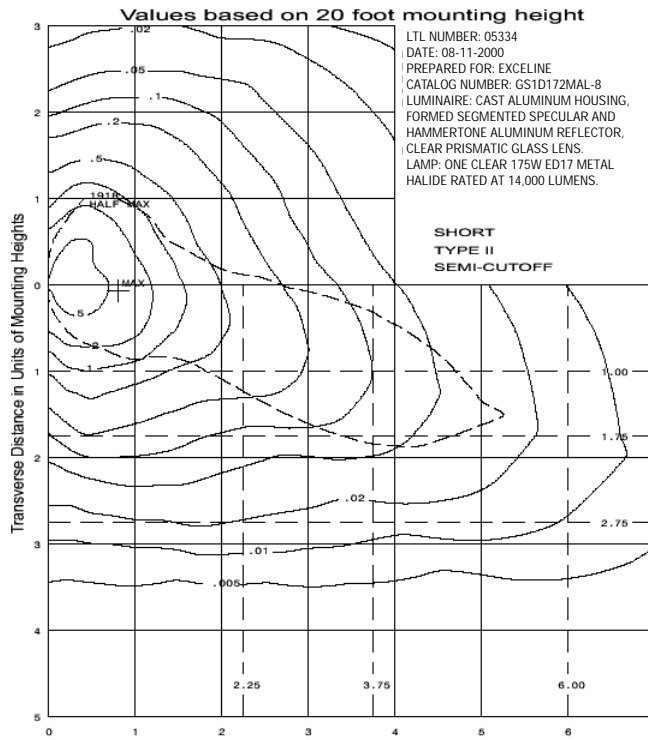
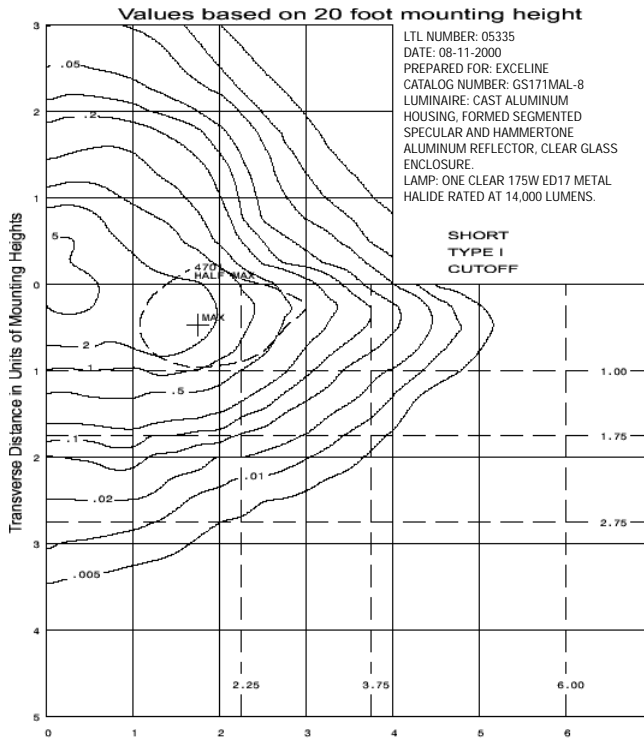
²Type 3 only. Example: GS1D323HF-6



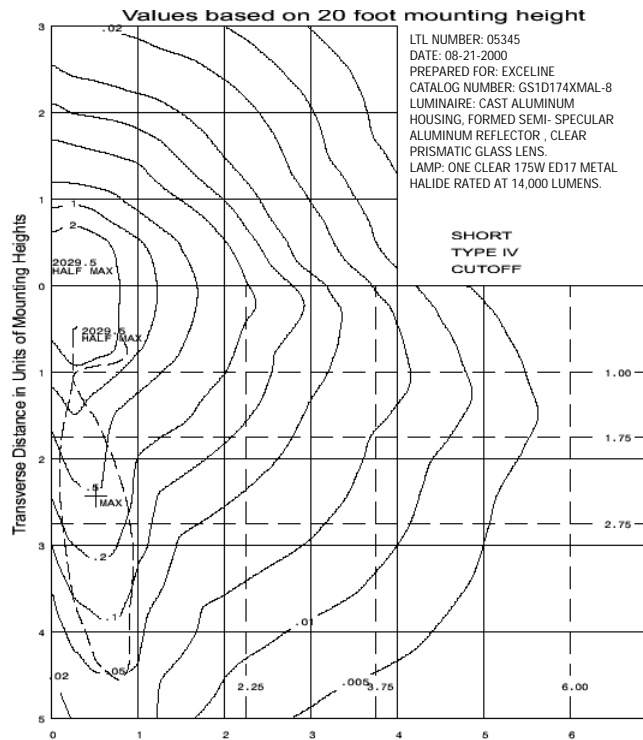
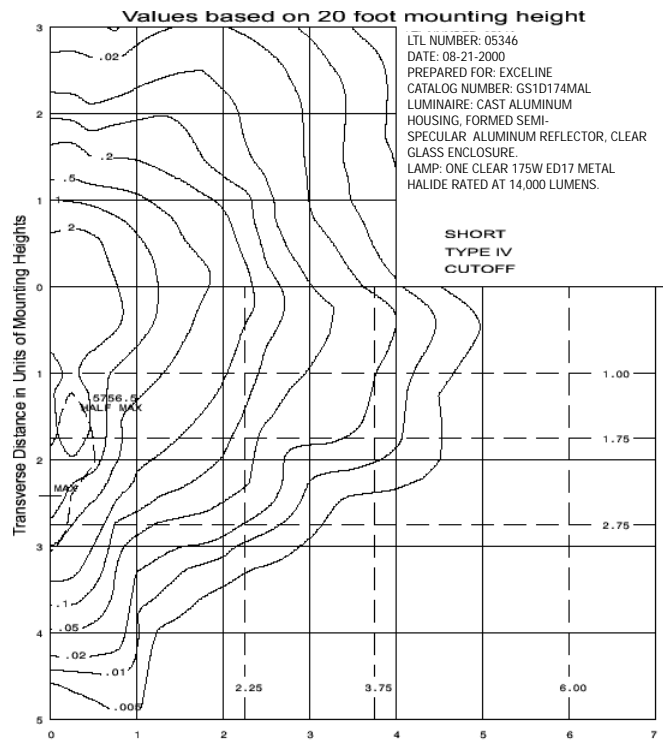
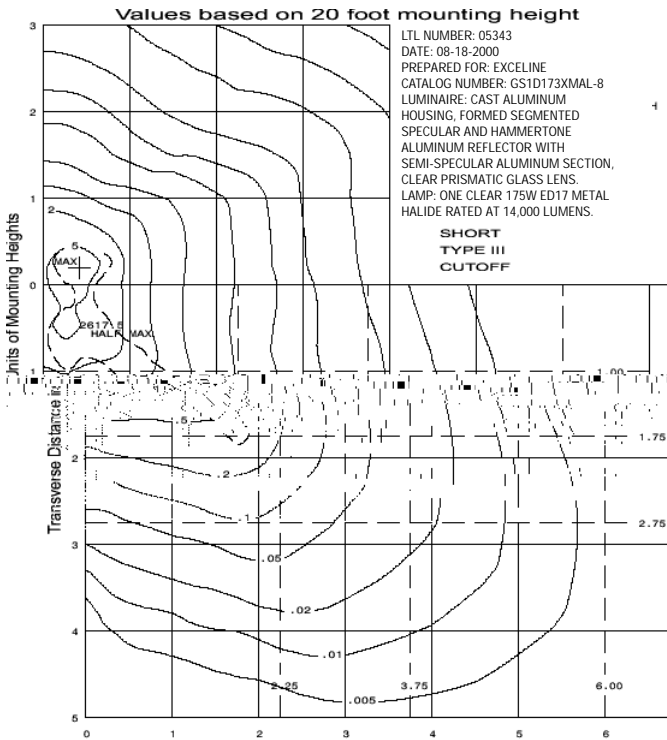
50 to 175 Watt (MA) Metal Halide
50 to 150 Watt (LX) High Pressure Sodium
26 to 42 Watt (HF) Compact Fluorescent
200 Watt Incandescent



GeoScapes™ Series 1 Low Wattage



GeoScapes™ Series 3 Low Wattage



Product information is subject to change without notice.