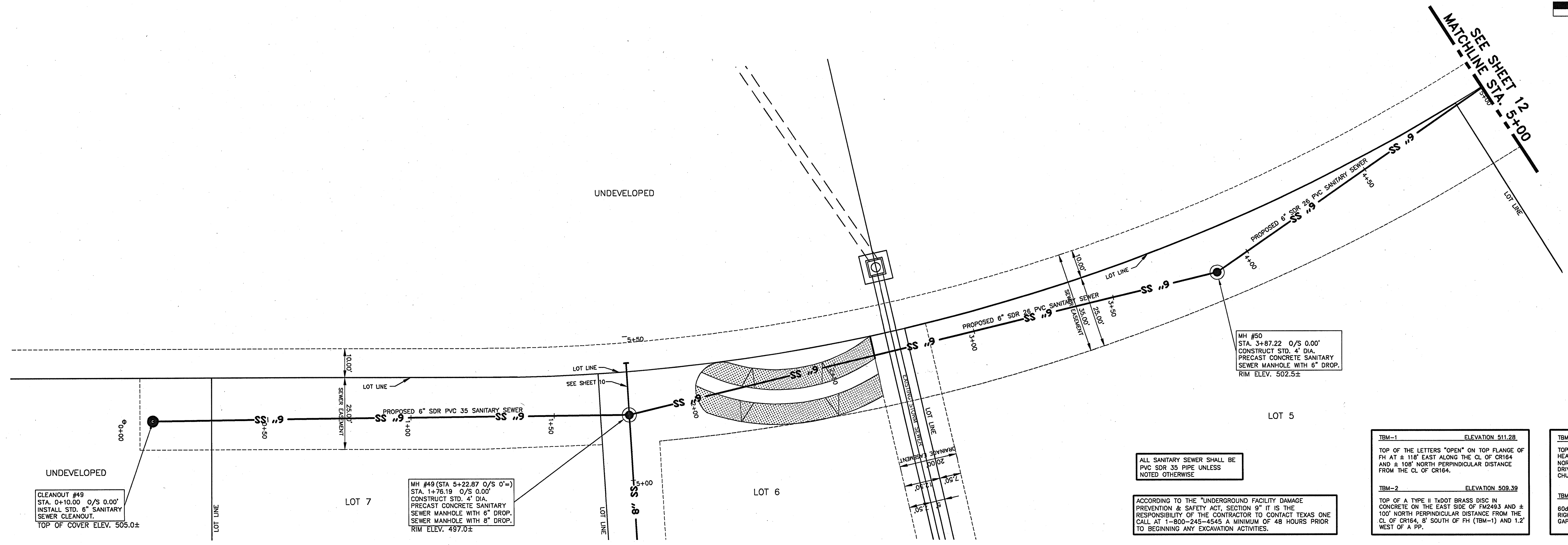


DESIGNED BY: RSB  
 DRAWN BY: RKR  
 CHECKED BY: RSB  
 DATE: DECEMBER 2005  
 SCALE: AS SHOWN

**The Brannon Corporation**  
 ENGINEERS, SURVEYORS, & URBAN PLANNERS  
 1321 SOUTH BROADWAY  
 TYLER, TEXAS 75701  
 (936) 587-2122  
 (936) 587-2348 FAX



ALL SANITARY SEWER SHALL BE PVC SDR 35 PIPE UNLESS NOTED OTHERWISE.

ACCORDING TO THE "UNDERGROUND FACILITY DAMAGE PREVENTION & SAFETY ACT, SECTION 9" IT IS THE RESPONSIBILITY OF THE CONTRACTOR TO CONTACT TEXAS ONE CALL AT 1-800-245-4545 A MINIMUM OF 48 HOURS PRIOR TO BEGINNING ANY EXCAVATION ACTIVITIES.

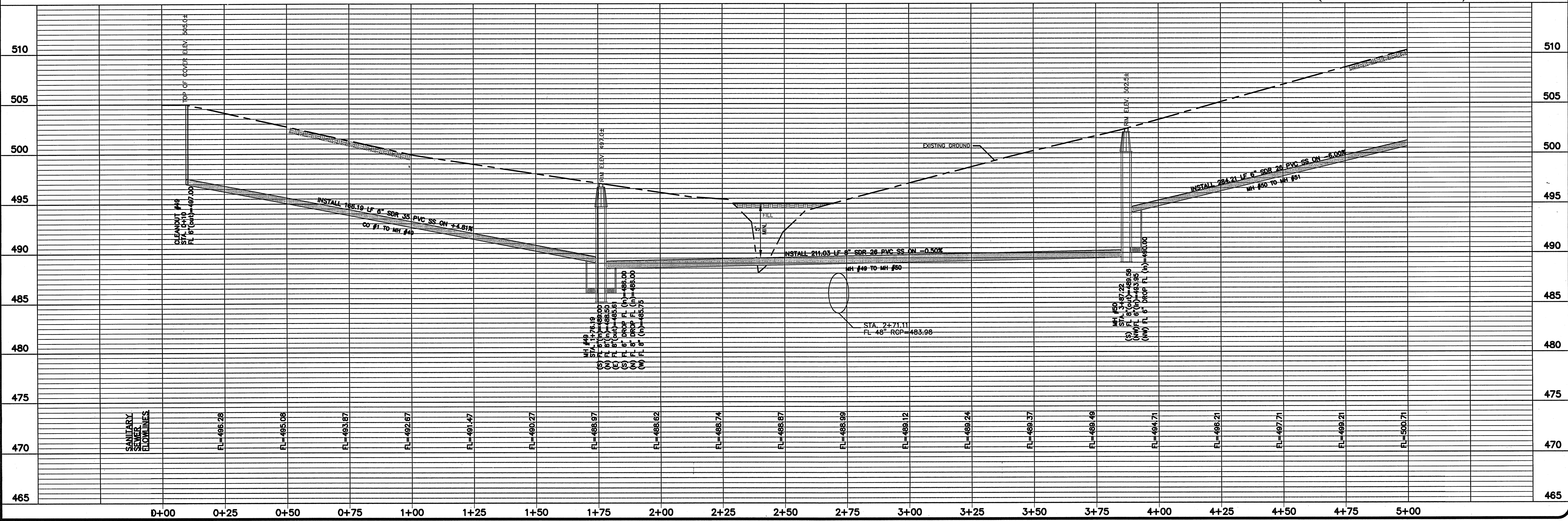
TBM-1 ELEVATION 511.28  
 TOP OF THE LETTERS "OPEN" ON TOP FLANGE OF FH AT ± 118' EAST ALONG THE CL OF CR164 AND ± 108' NORTH PERPENDICULAR DISTANCE FROM THE CL OF CR164.

TBM-2 ELEVATION 509.39  
 TOP OF A TYPE B 1x20T BRASS DISC IN CONCRETE ON THE EAST SIDE OF FM2493 AND ± 100' NORTH PERPENDICULAR DISTANCE FROM THE CL OF CR164, 8' SOUTH OF FH (TBM-1) AND 1.2' WEST OF A PP.

TBM-3 ELEVATION 528.71  
 TOP OF A BRASS CAP IN TOP OF CONCRETE HEADWALL OF SAFETY END TREATMENT AT THE NORTH END OF AN 18" ROP UNDER THE ASPHALT DRIVE TO LANES CHAPEL UNITED METHODIST CHURCH ON THE EAST SIDE OF FM2493.

TBM ELEVATION 506.56  
 80# NAIL IN 18" SAND JACK AT 12+84-45' RIGHT, SOUTH OF THE INTERSECTION OF BALSAM GAP LANE AND BLUE MOUNTAIN BLVD.

SEWER LINE BLUE MTN BLVD. (STA 0+10 TO 5+00)



© COPYRIGHT 2005 THE C.T. BRANNON CORPORATION. UNAUTHORIZED REUSE OR REPRODUCTION IS PROHIBITED.

**CONSTRUCTION PLANS**  
**BLUE MOUNTAIN ADDITION, UNIT 1**  
**SANITARY SEWER SYSTEM**  
**CUMBERLAND GAP**  
**TYLER, SMITH COUNTY, TEXAS**

REVISIONS		
NO.	DATE	REMARKS

CONTRACT NO. 05012  
 SHEET NO. **11**