

BUILDING FIRST FLOOR LIGHTING & POWER  
SCALE: 1/8" = 1'-0"

LEGEND

- FLUORESCENT FIXTURE
- BROADWAY LIGHT
- CEILING FAN
- CEILING MTG FIXTURE  
LETTER INDICATES TYPE
- WALL SCONCE FIXTURE  
LETTER INDICATES TYPE
- RECESSED FIXTURE  
LETTER INDICATES TYPE
- LIGHT W/ PULL CHAIN
- VENT
- EXIT LIGHT W/ 90 MIN. BATTERY BACKUP
- EMERGENCY LIGHT W/ 90 MIN. BATTERY BACKUP
- SWITCH
- 3 WAY SWITCH
- DUPLEX RECEPTACLE
- GFI RECEPTACLE
- WEATHERPROOF GFI RECEPTACLE
- QUAD RECEPTACLE
- DISCONNECT SWITCH
- POWER PANEL
- HOT WATER HEATER WITH DISCONNECT
- 220 OUTLET
- SMOKE DETECTOR
- CABLE TV OUTLET
- PHONE
- QUAD RECEPTACLE
- FIRE ALARM W/ AUDIBLE & VISUAL OUTPUTS
- FIRE ALARM
- FIRE ALARM HAND PULL STATION
- JUNCTION BOX
- THERMOSTAT
- 1 HOUR FIREWALL

LIGHT FIXTURE SCHEDULE

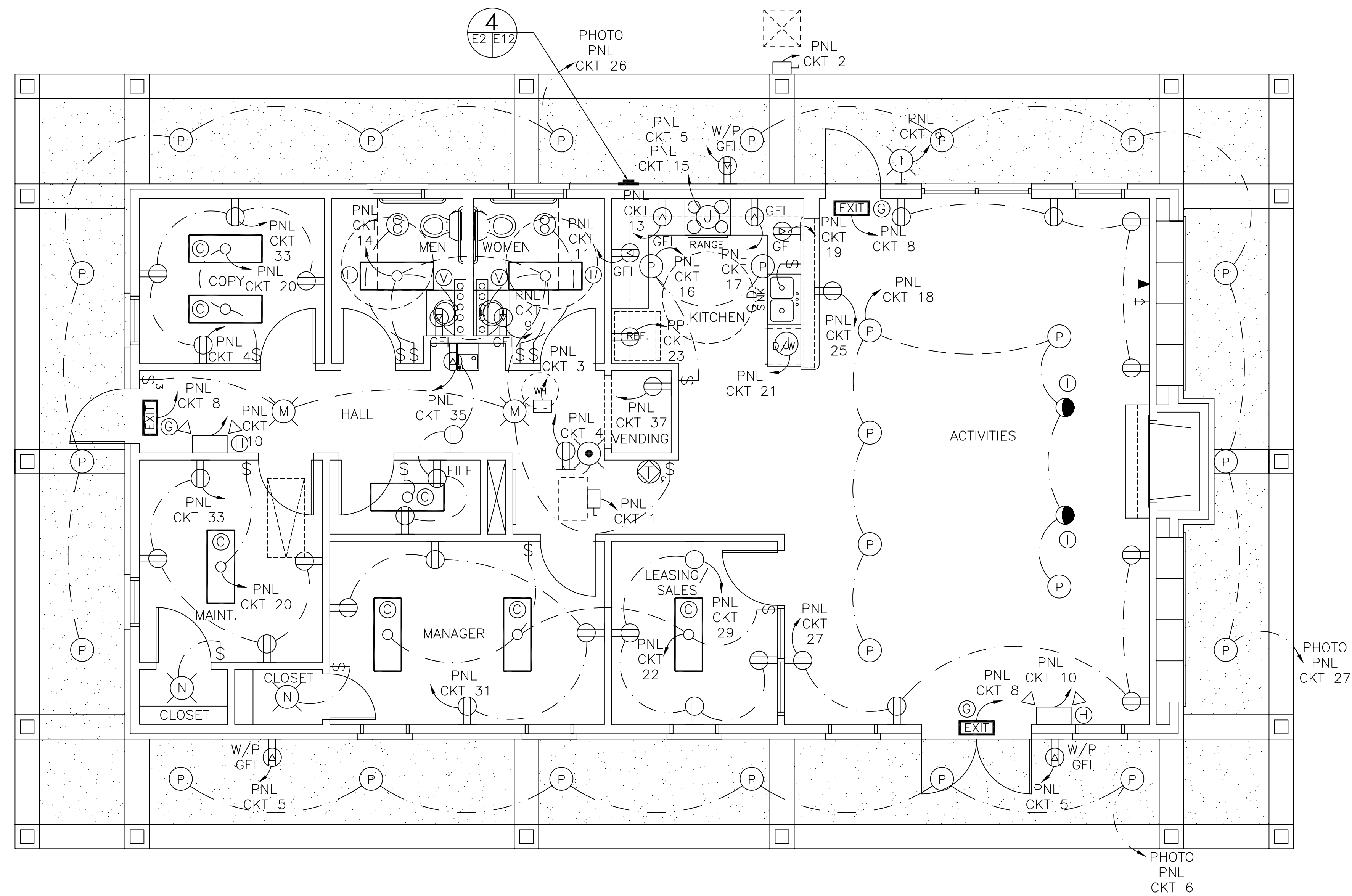
MARK	TYPE	MFGR.	CAT. NO.	LAMP	MOUNTING	VOLTS
(A)	A	PROGRESS	P5745-30	2	SURFACE	120
(B)	B	PROGRESS	P4961-30	2	SURFACE	120
(C)	CB	PROGRESS	P7196-30ES	4	SURFACE	120
(D)	CD	CRAFTMADE	TX107-W/WA	X	SURFACE	120
(E)	CD1	CRAFTMADE	F104/403	1/4	ATTACHMENT	120
(F)	X	LITHONIA	10830120ES	1	SURFACE	120
(G)	CE	LITHONIA	LQMSW3R120/277ELN	X	SURFACE	120
(H)	CF	LITHONIA	ELM2	2	WALL	120
(I)	CO	PROGRESS	P87AT0/808231	1	RECESSED	120
(J)	CR	PROGRESS	P5097-10	1	PENDANTS	120
(K)	CQ	PROGRESS	P3299-10	6	WALL & VANITY	120
(L)	D	PROGRESS	P7816-30ES	2	SURFACE	120
(M)	G	DESIGNERS	4732-PB	1	SURFACE	120
(N)	J	DESIGNER	4731-PB	1	SURFACE	120
(O)	K	EAGLE	604	1	SURFACE	120
(P)	R3	PROGRESS	P87-AT/8066-31	1	RECESSED	120
(R)	S	DESIGNER	1151PB	2	SURFACE	120
(S)	SMOKE	FIREX	4518	X	CEILING	120 SMOKE DETECTOR W/BATTERY BACKUP
(T)	X	PER OWNER	X	X	X	X
(U)	X	LITHONIA	11884120ES	2	SURFACE	120
(V)	CQ	PROGRESS	P3335-10	5	WALL & VANITY	120
(X)	CQ	PROGRESS	P3300-10	8	WALL & VANITY	120

BUILDING 1ST FLR. LIGHTING & POWER  
REFLECTIONS OF ISLAND PARK  
APARTMENT COMMUNITY  
SHREVEPORT, LOUISIANA

REFLECTIONS OF ISLAND PARK  
**DAMMON ENGINEERING, INC.**  
1095 FLORIDA AVENUE 985-649-5832 SLIDELL, LA. 70458  
DAMMONENGINEERING.COM

SCALE: AS NOTED  
FILE:  
JOB NO. 1817  
DATE: 01-12-07

SHEET  
**E-1**  
OF



LEASING OFFICE LIGHTING & POWER  
 SCALE: 1/4" = 1'-0"

SCALE: AS NOTED

FILE:

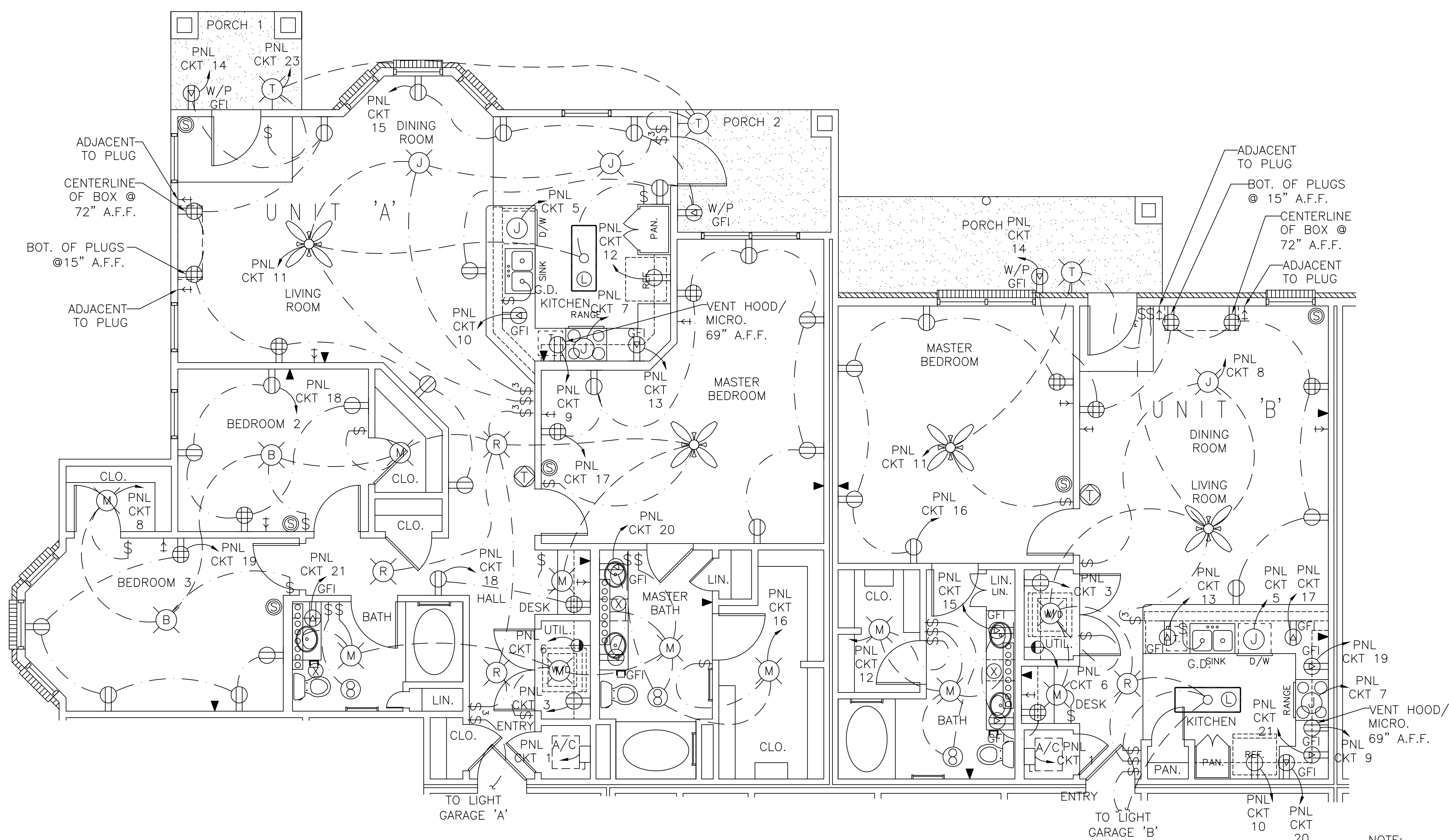
JOB NO. 1817

DATE: 01-12-07

SHEET

E-2

OF

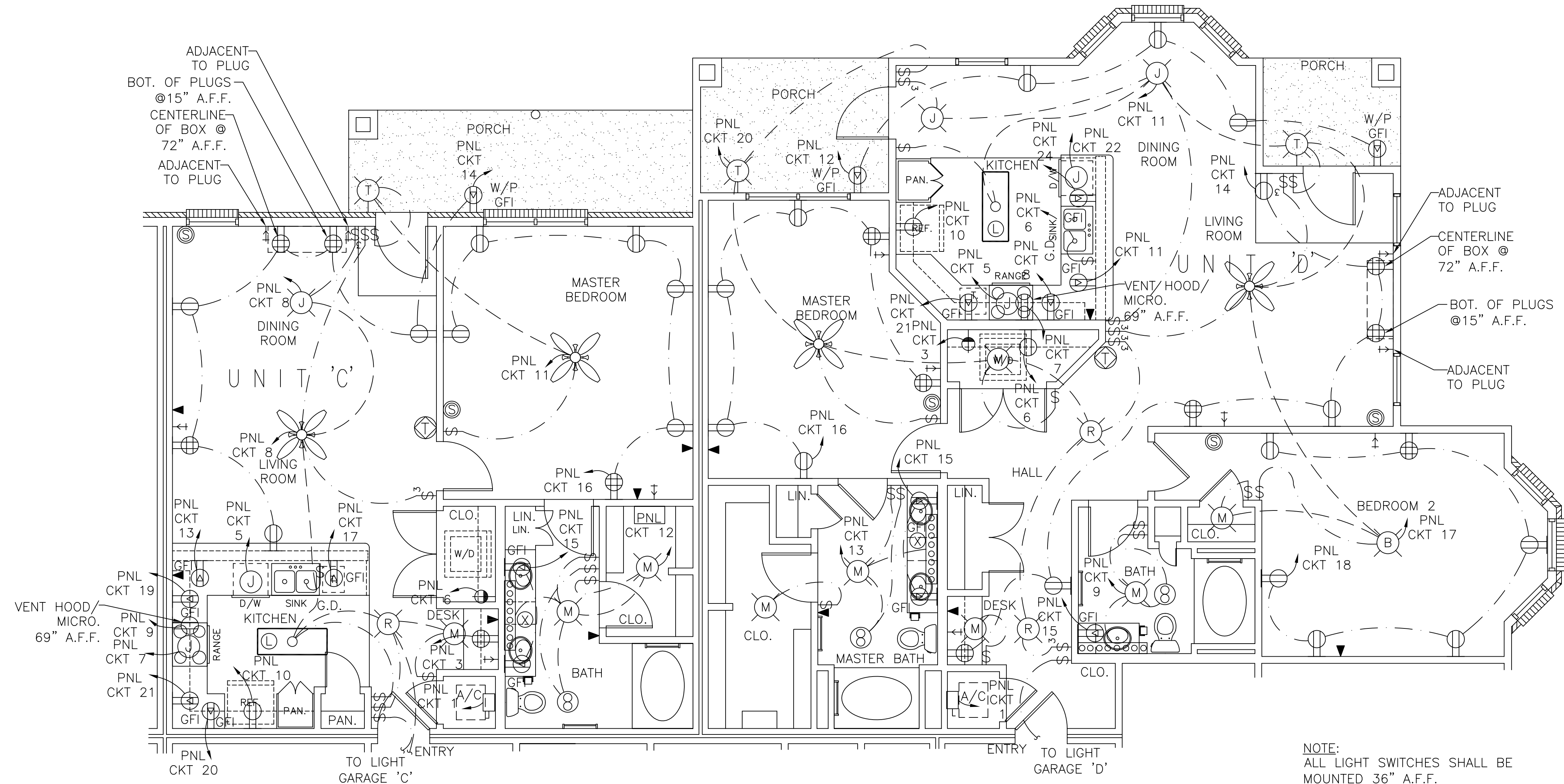


ADJACENT-TO PLUG  
 CENTERLINE OF BOX @ 72" A.F.F.  
 BOT. OF PLUGS @ 15" A.F.F.  
 ADJACENT-TO PLUG

ADJACENT TO PLUG  
 BOT. OF PLUGS @ 15" A.F.F.  
 CENTERLINE OF BOX @ 72" A.F.F.  
 ADJACENT TO PLUG

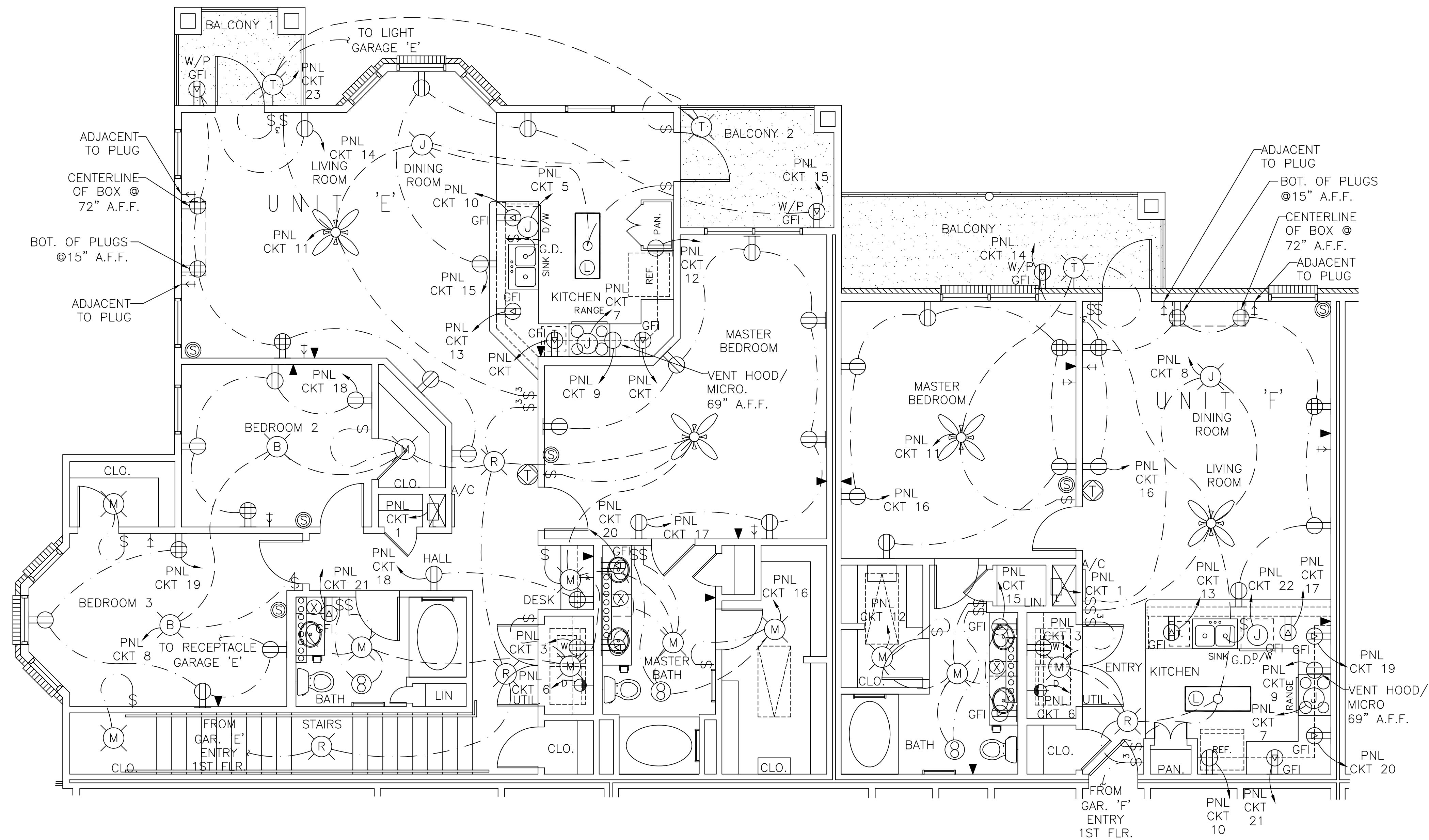
NOTE:  
 ALL LIGHT SWITCHES SHALL BE MOUNTED 36" A.F.F.  
 PROVIDE A QUAD RECEPTACLE ADJACENT TO EACH CABLE OUTLET.

**UNITS A & B LIGHTING & POWER**  
 SCALE: 1/4" = 1'-0"



NOTE:  
 ALL LIGHT SWITCHES SHALL BE MOUNTED 36" A.F.F.  
 PROVIDE A QUAD RECEPTACLE ADJACENT TO EACH CABLE OUTLET.

UNITS C & D LIGHTING & POWER  
 SCALE: 1/4" = 1'-0"



**UNITS E & F LIGHTING & POWER**  
 SCALE: 1/4" = 1'-0"

NOTE:  
 ALL LIGHT SWITCHES SHALL BE MOUNTED 36" A.F.F.  
 PROVIDE A QUAD RECEPTACLE ADJACENT TO EACH CABLE OUTLET.

SCALE: AS NOTED

FILE:

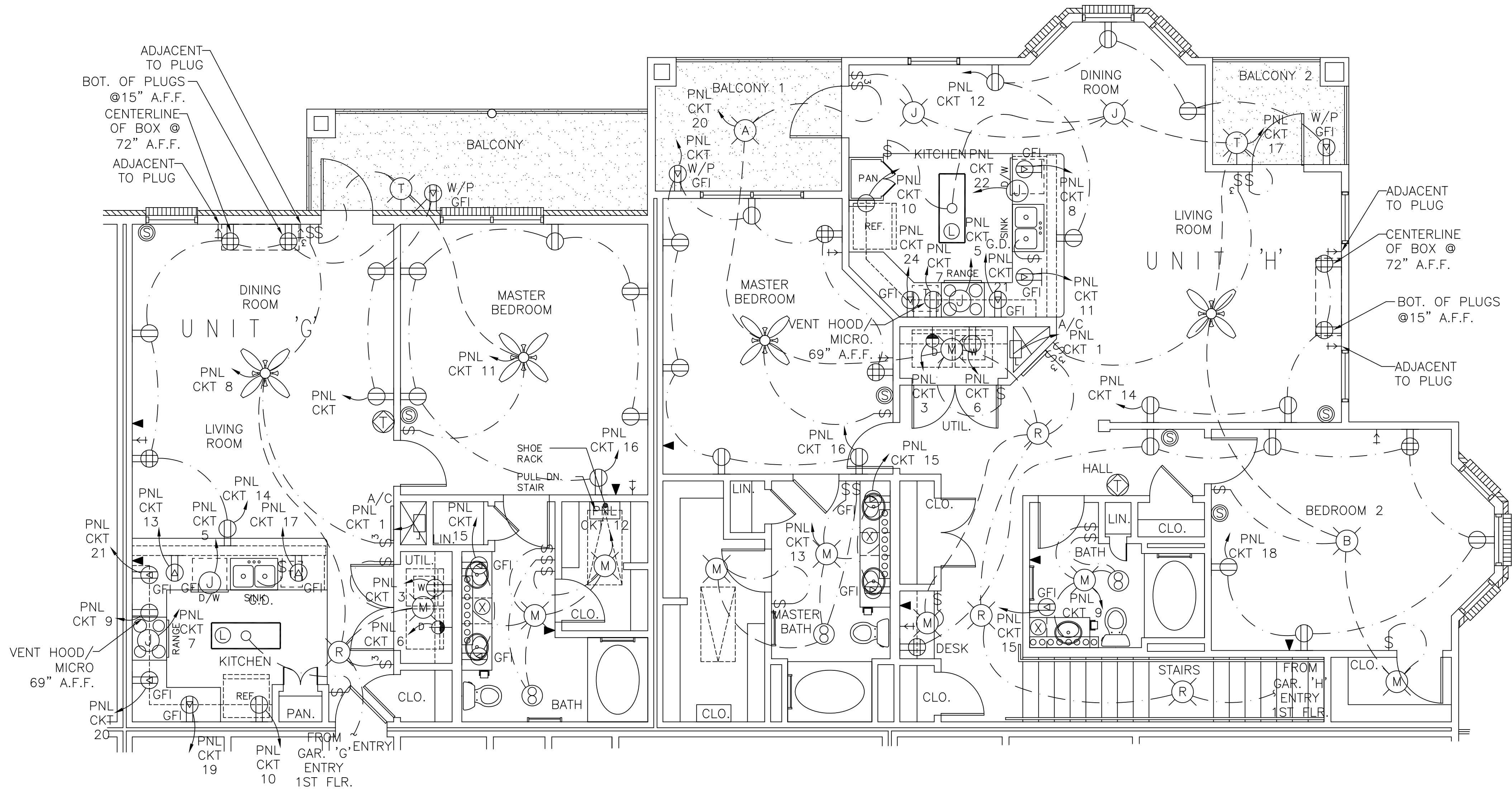
JOB NO. 1817

DATE: 01-12-07

SHEET

E-5

OF



NOTE:  
 ALL LIGHT SWITCHES SHALL BE MOUNTED 36" A.F.F.  
 PROVIDE A QUAD RECEPTACLE ADJACENT TO EACH CABLE OUTLET.

**UNITS G & H LIGHTING & POWER**  
 SCALE: 1/4" = 1'-0"

SCALE: AS NOTED

FILE:

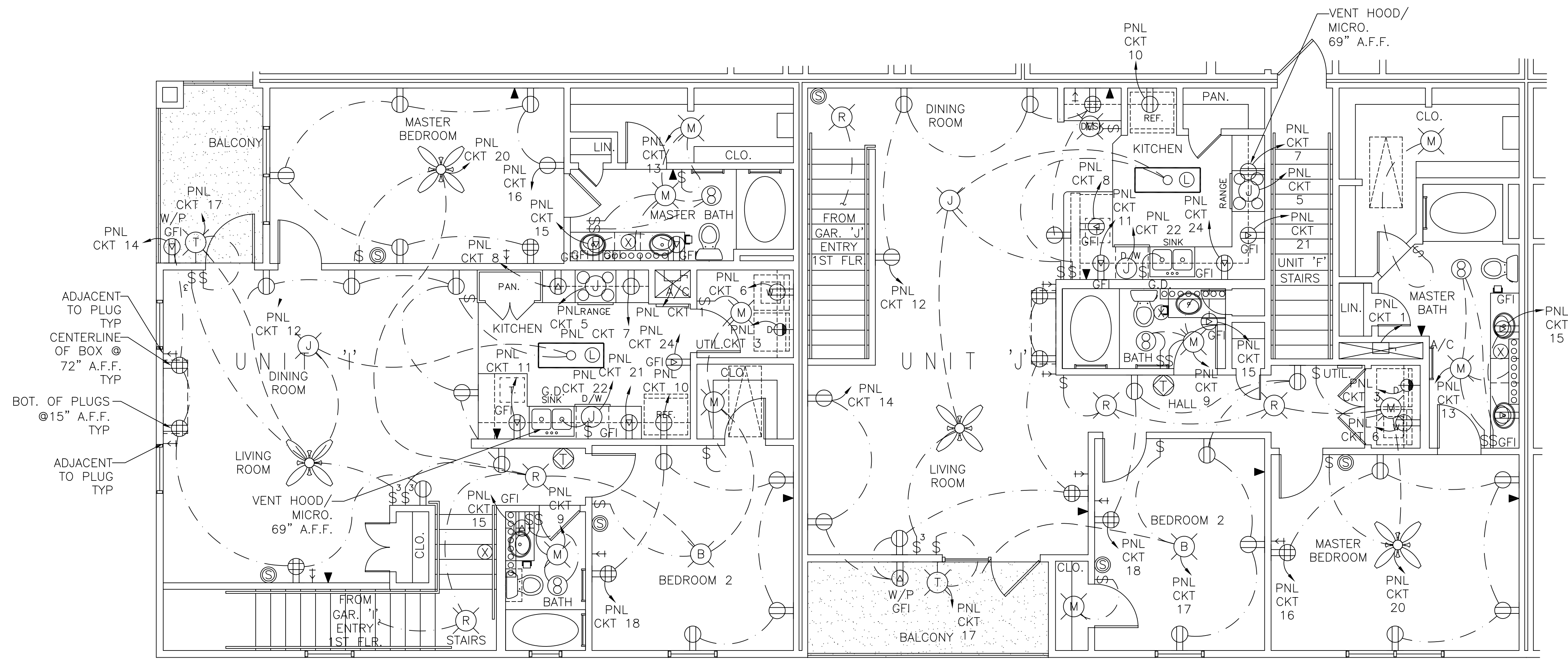
JOB NO. 1817

DATE: 01-12-07

SHEET

E - 6

OF



ADJACENT TO PLUG TYP  
 CENTERLINE OF BOX @ 72" A.F.F. TYP  
 BOT. OF PLUGS @ 15" A.F.F. TYP  
 ADJACENT TO PLUG TYP

**UNITS I & J LIGHTING & POWER**  
 SCALE: 1/4" = 1'-0"

NOTE:  
 ALL LIGHT SWITCHES SHALL BE MOUNTED 36" A.F.F.  
 PROVIDE A QUAD RECEPTACLE ADJACENT TO EACH CABLE OUTLET.

UNITS I & J LIGHTING & POWER  
 REFLECTIONS OF ISLAND PARK  
 APARTMENT COMMUNITY  
 SHREVEPORT, LOUISIANA

REFLECTIONS OF ISLAND PARK  
**DAMMON ENGINEERING, INC.**  
 1095 FLORIDA AVENUE 985-649-5832 SLIDELL, LA. 70458  
 DAMMONENGINEERING.COM

SCALE: AS NOTED

FILE:

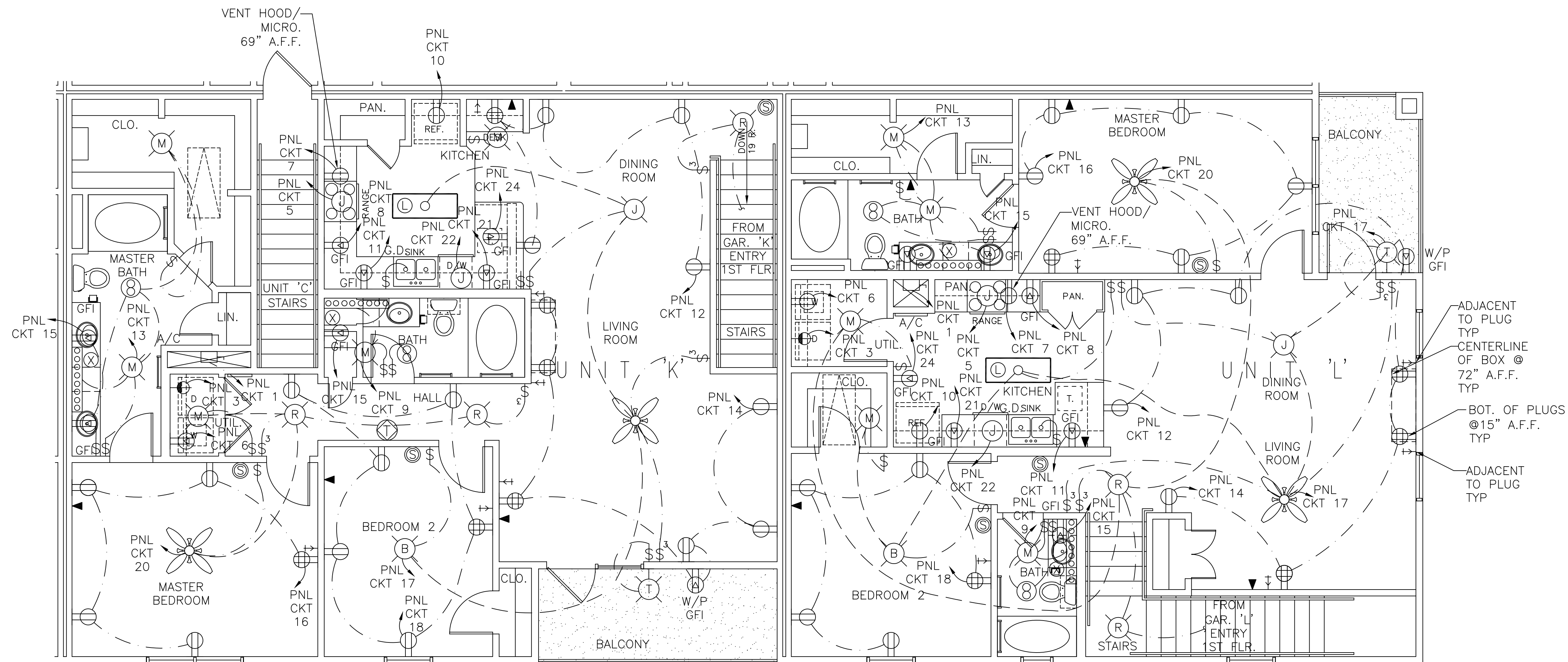
JOB NO. 1817

DATE: 01-12-07

SHEET

E-7

OF



**UNITS K & L LIGHTING & POWER**  
 SCALE: 1/4" = 1'-0"

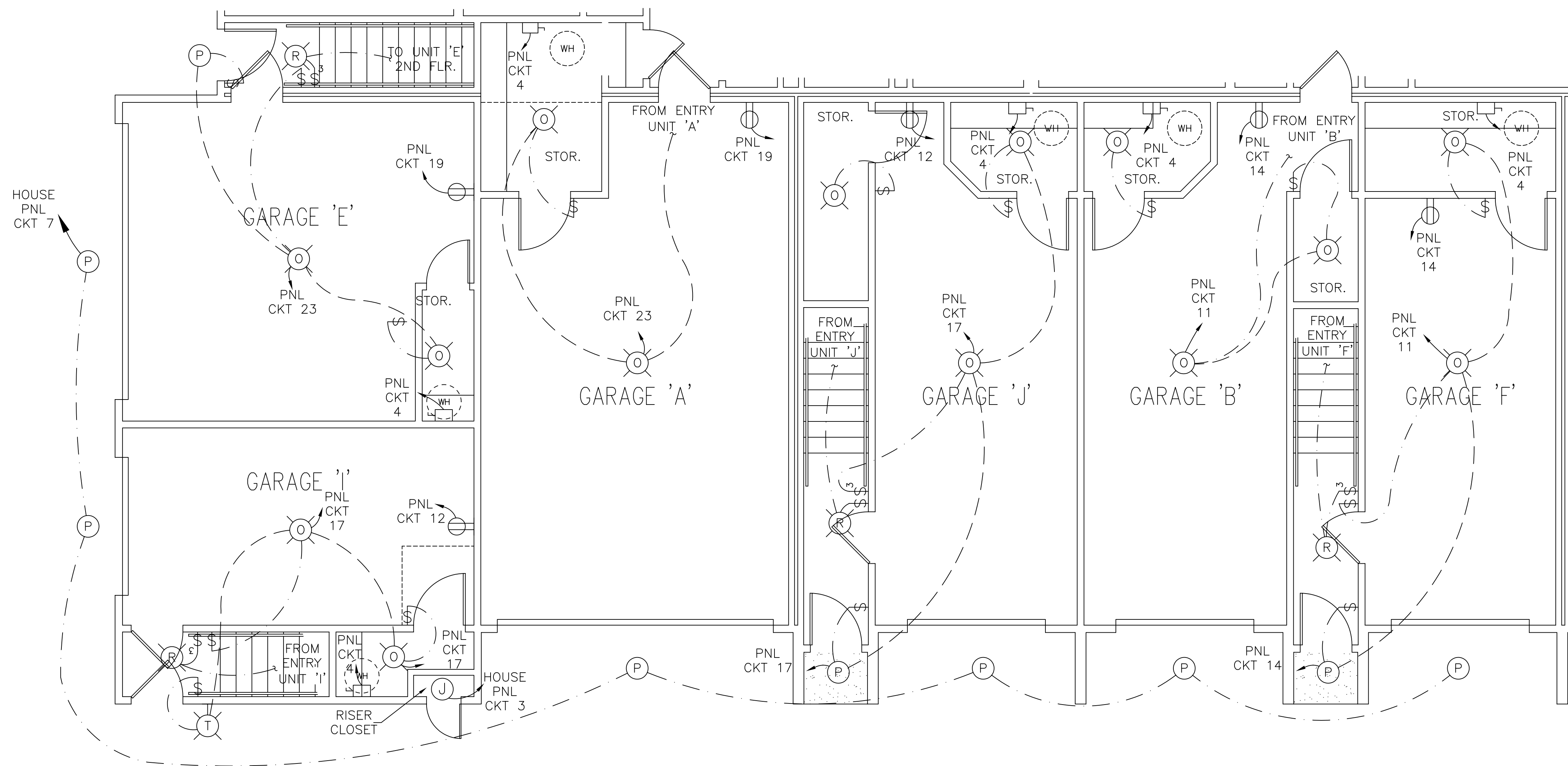
NOTE:  
 ALL LIGHT SWITCHES SHALL BE MOUNTED 36" A.F.F.  
 PROVIDE A QUAD RECEPTACLE ADJACENT TO EACH CABLE OUTLET.

UNITS K & L LIGHTING & POWER  
 REFLECTIONS OF ISLAND PARK  
 APARTMENT COMMUNITY  
 SHREVEPORT, LOUISIANA

REFLECTIONS OF ISLAND PARK  
**DAMMON ENGINEERING, INC.**  
 1095 FLORIDA AVENUE 985-649-5832 SLIDELL, LA. 70458  
 DAMMONENGINEERING.COM

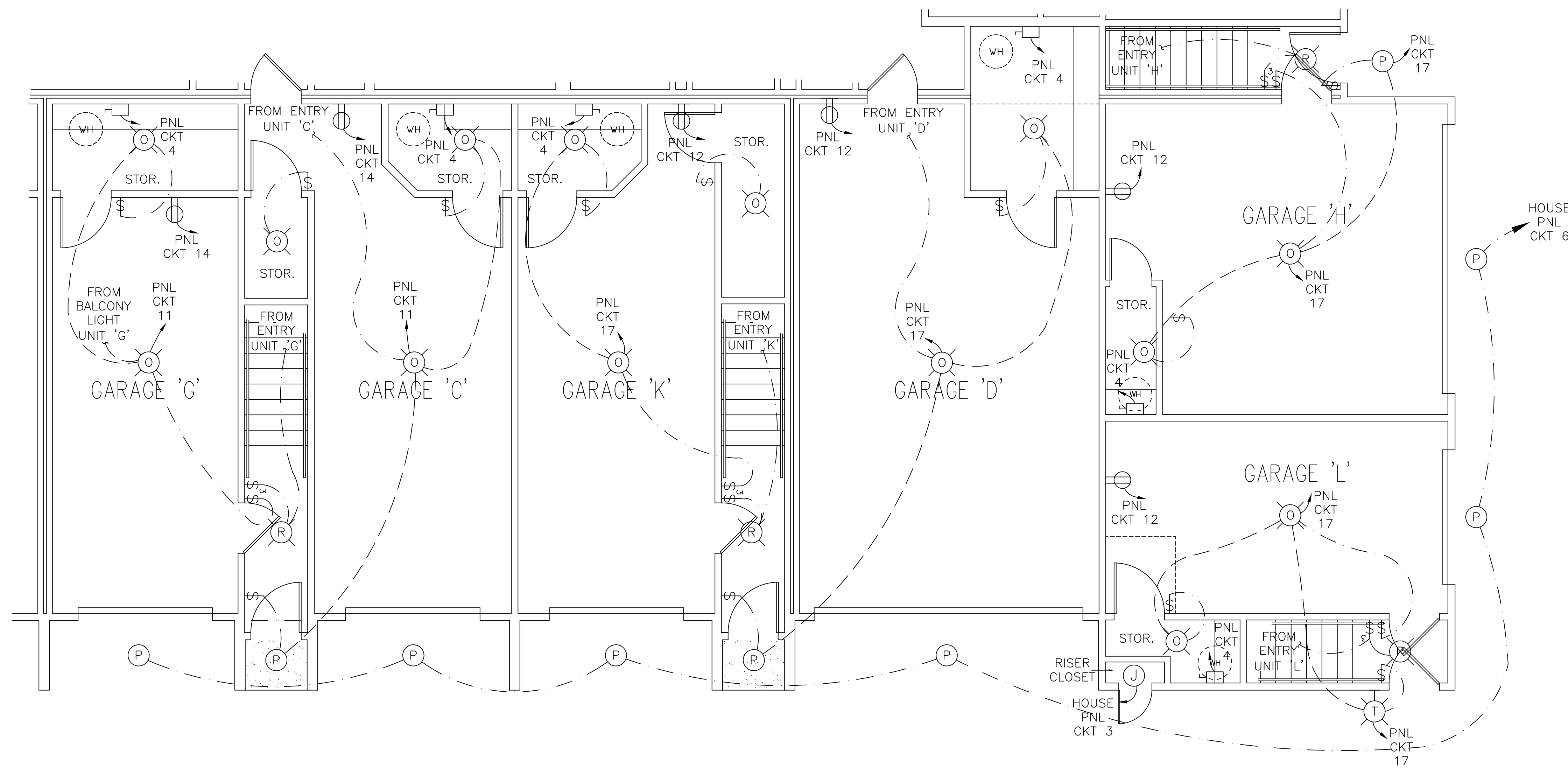
SCALE: AS NOTED  
 FILE:  
 JOB NO. 1817  
 DATE: 01-12-07

SHEET  
**E - 08**  
 OF



**GARAGE LIGHTING & POWER**  
 SCALE: 1/4" = 1'-0"

NOTE:  
 ALL LIGHT SWITCHES SHALL BE MOUNTED 36" A.F.F.  
 PROVIDE A QUAD RECEPTACLE ADJACENT TO EACH CABLE OUTLET.



**GARAGE LIGHTING & POWER**  
 SCALE: 1/4" = 1'-0"

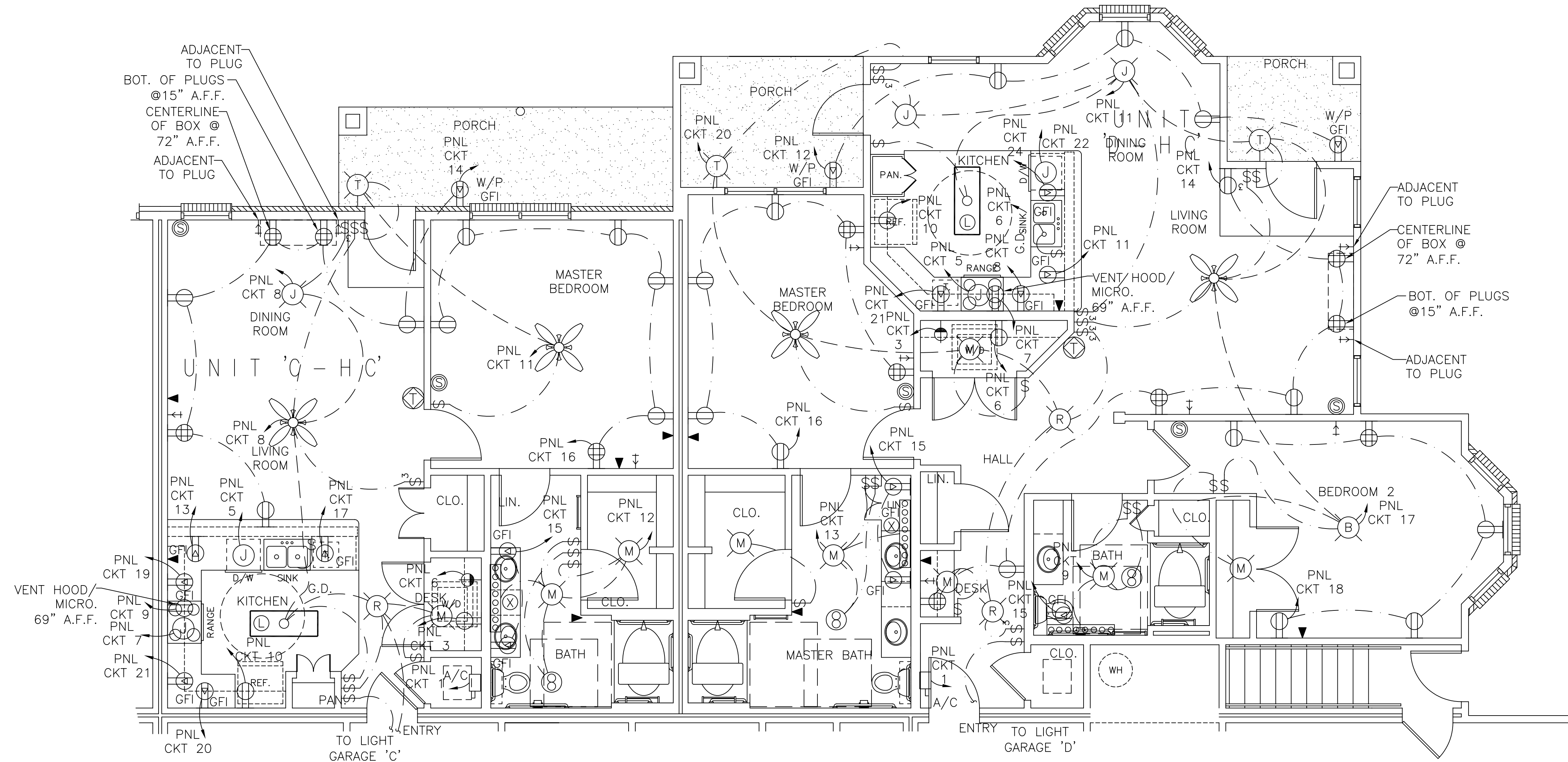
NOTE:  
 ALL LIGHT SWITCHES SHALL BE MOUNTED 36" A.F.F.  
 PROVIDE A QUAD RECEPTACLE ADJACENT TO EACH CABLE OUTLET.

GARAGE LIGHTING & POWER  
 ISLAND PARK  
 APARTMENT COMMUNITY  
 SHREVEPORT, LOUISIANA

REFLECTIONS OF ISLAND PARK  
**DAMMON ENGINEERING, INC.**  
 1095 FLORIDA AVENUE 985-649-5832 SLIDELL, LA. 70458  
 DAMMONENGINEERING.COM

SCALE: AS NOTED  
 FILE:  
 JOB NO. 1817  
 DATE: 01-12-07

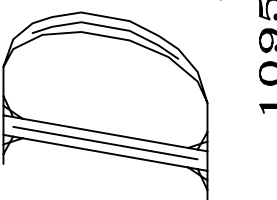
SHEET  
**E.10**  
 OF



UNITS C-HC & D-HC LIGHTING & POWER  
 SCALE: 1/4" = 1'-0"

NOTE:  
 ALL LIGHT SWITCHES SHALL BE  
 MOUNTED 36" A.F.F.

PROVIDE A QUAD RECEPTACLE  
 ADJACENT TO EACH CABLE OUTLET.



SCALE: AS NOTED

FILE:

JOB NO. 1817

DATE: 01-12-07

SHEET

E-11

OF

PANEL: TYPICAL HOUSE POWER				VOLTAGE: 120/240V, 1 $\phi$ , 3W, 125A MAIN BREAKER, 125A MAIN BUS, WEATHERPROOF, SURFACE MOUNTED W/EQUIPMENT GROUND BAR SIEMENS TYPE EQ OR EQUAL			
CKT NO.	LOAD DESCRIPTION LOCATION	BREAKER AMP POLE	LOAD (VA)	LOAD (VA)	BREAKER POLE AMP	LOAD DESCRIPTION LOCATION	CKT NO.
1	GFI RECEPTACLE	20 1	720	720	1 20	GFI RECEPTACLE	2
3	SPRINKLER HEATER 5KW	30 2	5,000	720	1 20	GFI RECEPTACLE	4
5				1,000	1 20	EXTERIOR LIGHTING	6
7	EXTERIOR LIGHTING	- 1 -	-	-	1 -	SPARE	8
9	SPARE	- 1 -	-	-	1 -	SPARE	10
11	SPARE	- 1 -	-	-	-	SPACE	12
13	SPACE	- - -	-	-	- - -	SPACE	14
15	SPACE	- - -	-	-	- - -	SPACE	16
SOLID NEUTRAL NEUTRAL WIRE (N)			TOTAL CONNECTED LOAD (VA) A $\phi$ =7,440 B $\phi$ =5,720		GROUND BUS GROUND WIRE (G)		

PANEL: LEASING OFFICE POWER/ LIGHTING				VOLTAGE: 120/208V, 1 $\phi$ , 3W, 200A MAIN BREAKER, 200A MAIN BUS, FLUSH MOUNTED W/EQUIPMENT GROUND BAR SIEMENS TYPE EQ OR EQUAL			
CKT NO.	LOAD DESCRIPTION LOCATION	BREAKER AMP POLE	LOAD (VA)	LOAD (VA)	BREAKER POLE AMP	LOAD DESCRIPTION LOCATION	CKT NO.
1	HEATER/BLOWER UNIT 5 TON	50 2	12,000	12,000	2 50	A/C COMPRESSOR 5 TON	2
3	HOT WATER HEATER	30 2	4,500	300	1 20	A/C/ LIGHT RECEPT.	4
5	EXTERIOR GFI RECEPT.	20 1	1,200	600	1 20	EXTERIOR LIGHTS	6
7	COPY ROOM RECEPT.	20 1	600	1,500	1 20	EXIT LIGHTS	8
9	RESTROOM GFI RECEPT.	50 2	360	500	1 20	EMERGENCY LIGHTS	10
11	KITCHEN GFI RECEPT.	50 2	360	400	1 20	COPY ROOM LIGHTS	12
13	KITCHEN GFI RECEPT.	20 1	360	600	1 20	RESTROOM/ HALL LIGHTS	14
15	RANGE	20 2	5,000	200	1 20	KITCHEN LIGHTS	16
17	KITCHEN GFI RECEPT.	20 1	360	800	1 20	ACTIVITIES LIGHTS	18
19	KITCHEN GFI RECEPT.	20 1	360	600	1 20	COPY/ MAINT. LIGHTS	20
21	DISHWASHER	20 1	1,500	600	1 20	LEASING/ SALES/ MANAGER LIGHTS	22
23	REFRIGERATOR	20 1	1,200	1,000	1 20	SMOKE DETECTORS	24
25	ACTIVITIES RECEPT.	20 1	700	-	1 20	EXTERIOR LIGHTS	26
27	ACTIVITIES RECEPT.	20 1	700	-	1 20	EXTERIOR LIGHTS	28
29	LEASING/ SALES RECEPT.	20 1	700	-	1 20	SPARE	30
31	MANAGER RECEPT.	20 1	700	-	1 20	SPARE	32
33	MAINTENANCE RECEPT.	20 1	700	-	1 20	SPARE	34
35	HALL/ FILE RECEPT.	20 1	700	-	1 20	SPARE	36
37	VENDING RECEPT.	20 1	1,200	-	1 20	SPARE	38
SOLID NEUTRAL NEUTRAL WIRE (N)			TOTAL CONNECTED LOAD (VA) A $\phi$ = 43,080 B $\phi$ = 41,520		GROUND BUS GROUND WIRE (G)		

PANEL 1PNL: TYPICAL 1 BEDROOM UNITS				VOLTAGE: 120/240V, 1 $\phi$ , 3W, 125A MAIN BREAKER, 200A MAIN BUS, FLUSH MOUNTED W/EQUIPMENT GROUND BAR SIEMENS TYPE EQ OR EQUAL			
CKT NO.	LOAD DESCRIPTION LOCATION	BREAKER AMP POLE	LOAD (VA)	LOAD (VA)	BREAKER POLE AMP	LOAD DESCRIPTION LOCATION	CKT NO.
1	HEATER/BLOWER UNIT 3 TON	50 2	12,000	4,000	2 30	A/C COMPRESSOR 3 TON	2
3	WASHER	30 1	5,000	4,500	2 30	WATER HEATER	4
5	DISHWASHER	30 1	1,500				
7	RANGE	50 2	5,000	1,200	1 20	DRYER	6
9	HOOD/MICROWAVE	20 1	1,200	500	1 20	LIVING/ DINING/ UTIL/ KITCHEN/ HALL LIGHTS	8
11	STO./PORCH/ MSTR. BED, GARAGE LIGHTS	20 1	400	2,000	1 20	REFRIGERATOR	10
13	KITCHEN GFI RECEPTACLE	20 1	360	775	1 20	MASTER BATH/ CLOSET LIGHTS	12
15	BATHROOM GFI RECEPT.	20 1	360	700	1 20	LIVING/ DINING RM./ KIT. PORCH/ RECEPT.	14
17	KITCHEN GFI RECEPTACLE	20 1	360	1,050	1 20	RECEPT. MASTER BDRM.	16
19	KITCHEN GFI RECEPTACLE	20 1	360	1,000	1 20	SMOKE DETECTORS	18
21	KITCHEN GFI RECEPTACLE	20 1	360	360	1 20	KITCHEN GFI RECEPTACLE	20
23	GARAGE RECEPTACLE	20 1	175	-	-	SPARE	22
SOLID NEUTRAL NEUTRAL WIRE (N)			TOTAL CONNECTED LOAD (VA) A $\phi$ =36,665 B $\phi$ =33,195		GROUND BUS GROUND WIRE (G)		

PANEL 2PNL: TYPICAL 2 BEDROOM UNITS				VOLTAGE: 120/240V, 1 $\phi$ , 3W, 125A MAIN BREAKER, 200A MAIN BUS, FLUSH MOUNTED W/EQUIPMENT GROUND BAR SIEMENS TYPE EQ OR EQUAL			
CKT NO.	LOAD DESCRIPTION LOCATION	BREAKER AMP POLE	LOAD (VA)	LOAD (VA)	BREAKER POLE AMP	LOAD DESCRIPTION LOCATION	CKT NO.
1	HEATER/BLOWER UNIT 3 TON	50 2	12,000	4,000	2 30	A/C COMPRESSOR 3 TON	2
3	CLOTHES DRYER	30 2	5,000	4,500	2 30	WATER HEATER	4
5	RANGE	50 2	5,000	1,200	1 20	WASHING MACHINE	6
7	HOOD/ MICROWAVE	20 1	1,200	360	1 20	KITCHEN GFI RECEPTACLE	8
9	BATHROOM 1 LIGHTING	20 1		2,000	1 20	REFRIGERATOR	10
11	KITCHEN GFI RECEPTACLE	20 1	360	875	1 20	DINING ROOM RECEPT.	12
13	MASTER BATH LIGHTING	20 1	600	1,050	1 20	LIVING ROOM RECEPT.	14
15	MSTR. BATH/BATH RCPT.	20 1	720	1,050	1 20	MASTER BDRM. RECEPT.	16
17	PORCH/BDRM. 2/ KITCH/DINING/LIVING	20 1	700	700	1 20	BED. 2/ HALL RECEPT.	18
19	SMOKE DETECTORS	20 1	1,000	1,500	1 20	UTIL/BDRM. 2/ HALL/ MSTR. BDRM. LIGHTS	20
21	KITCHEN GFI RECEPTACLE	20 1	360	360	1 20	DISHWASHER	22
SOLID NEUTRAL NEUTRAL WIRE (N)			TOTAL CONNECTED LOAD (VA) A $\phi$ =40,405 B $\phi$ =49,905		GROUND BUS GROUND WIRE (G)		

PANEL: 3PNL- TYPICAL 3 BEDROOM UNIT				VOLTAGE: 120/240V, 1 $\phi$ , 3W, 125A MAIN BREAKER, 125A MAIN BUS, FLUSH MOUNTED W/EQUIPMENT GROUND BAR SIEMENS TYPE EQ OR EQUAL			
CKT NO.	LOAD DESCRIPTION LOCATION	BREAKER AMP POLE	LOAD (VA)	LOAD (VA)	BREAKER POLE AMP	LOAD DESCRIPTION LOCATION	CKT NO.
1	HEATER/BLOWER UNIT 5 TON	60 2	12,000	4,000	2 35	A/C COMPRESSOR 5 TON	2
3	WASHER	30 1	1,200	4,500	2 30	WATER HEATER	4
5	DISHWASHER	20 1	-	-	-	-	-
7	RANGE	40 2	5,000	5,000	2 30	DRYER	6
9	HOOD/MICROWAVE	20 1	1,200	875	1 20	MSTR. BED., BED. 2, 3/ HALL/ ENTRY LIGHTS	8
11	LIVING/ DINING/ KITCHEN LIGHTS	20 1	700	360	1 20	KITCHEN GFI RECEPTACLE	10
13	KITCHEN GFI RECEPTACLE	20 1	360	2,000	1 20	REFRIGERATOR	12
15	DINING ROOM/ PORCH 2 RECEPT.	20 1	1,050	700	1 20	LIVING/ HALL/ PORCH 1 RECEPT.	14
17	MSTR. BED/GAR. RECEPT.	20 1	1,225	1,550	1 20	MASTER BATH/BATH/CLO. UTILITY RM. LIGHTS	16
19	BEDROOM 3 RECEPT.	20 1	875	875	1 20	BEDROOM 2/HALL RCPT.	18
21	BATHROOM GFI RECEPT	20 1	360	360	1 20	MSTR. BATH GFI RECEPT.	20
23	PORCH/ GAR./STO. LTS.	20 1	525	1,000	1 20	SMOKE DETECTORS	22
SOLID NEUTRAL NEUTRAL WIRE (N)			TOTAL CONNECTED LOAD (VA) A $\phi$ =39,630 B $\phi$ = 37,735		GROUND BUS GROUND WIRE (G)		

PANEL SCHEDULES

REFLECTIONS OF ISLAND PARK  
APARTMENT COMMUNITY  
SHREVEPORT, LOUISIANA

REFLECTIONS OF ISLAND PARK

**DAMMON ENGINEERING, INC.**  
1095 FLORIDA AVENUE 985-649-5832 SLIDELL, LA. 70458  
DAMMONENGINEERING.COM

SCALE:AS NOTED

FILE:

JOB NO. 1817

DATE:01-12-07

SHEET

E.12

OF

