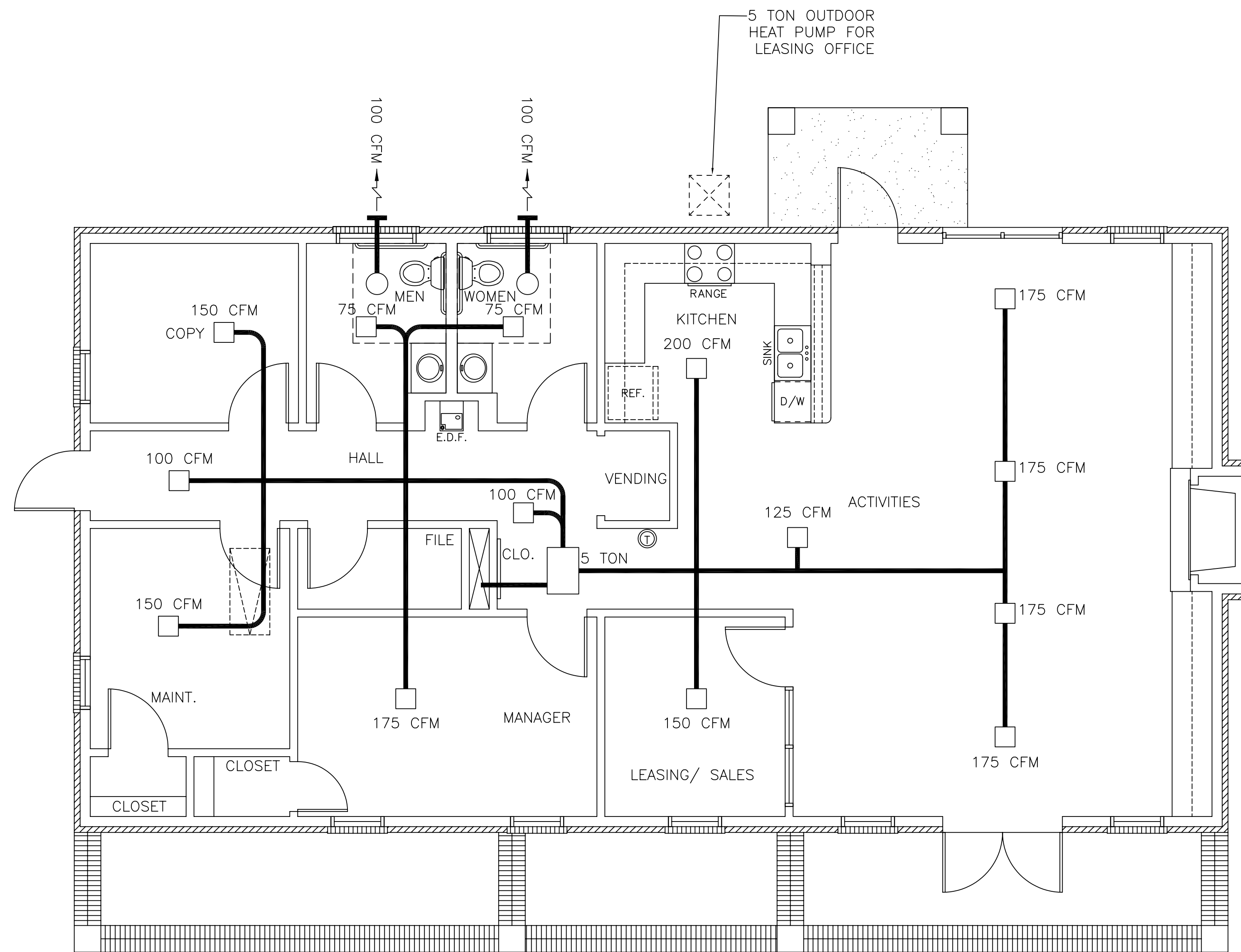


**NOTES**

- 1 EXHAUST FAN EQUAL TO BROAN MODEL NO. L100 100 CFM OR EQUAL. FAN SHALL BE CONTROLLED BY SWITCH ON WALL AT LIGHT SWITCH. PROVIDE BACK DRAFT DAMPER AND FIRE DAMPER.
- 2 PROVIDE AND INSTALL WATER PROOF GRILLE IN OUTSIDE WALL FOR TOILET EXHAUST.
- 3 DRYER DISCHARGE GRILLE PER MFR.'S REQUIREMENTS. BACK DRAFT DAMPER MUST BE WEATHER AND INSECT PROOF.
- 4 EXHAUST DISCHARGE GRILLE PER MFG.'S REQUIREMENTS.
- 5 MECHANICAL CONTRACTOR SHALL SIZE ALL DUCTWORK.
- 6 ROUND FLEXIBLE DUCT TO BE UL-181, CLASS I, AIR DUCT MATERIAL.
- 7 PROVIDE U.L. LISTED 1250°F FIRESTAT IN RETURN AIR OF EACH SYSTEM UNDER 2000 CFM TO SHUT DOWN FAN IN THE EVENT OF A FIRE.
- 8 ALL SUPPLY AIR VENTS SHALL BE EQUIPPED WITH FIRE DAMPERS (CONNECT TO THE BUILDING FIRE ALARM SYSTEM AND AIR CONTROL DAMPERS WHERE APPLICABLE.)
- 9 ALL AIR HANDLING SYSTEMS SHALL BE BALANCED TO ASSURE PROPER AIR FLOWS PER PLAN.
- 10 ALL THERMOSTATS TO BE AUTOMATIC CHANGEOVER WITH HEAT-OFF-COOL SWITCH
- 11 LOCATION OF OUTDOOR UNITS AS PER ARCHITECTS RECOMMENDATION. MECHANICAL CONTRACTOR SHALL PROVIDE A 4" THK. CONCRETE REINFORCED PAD FOR CONDENSING UNIT.
- 12 REFRIGERANT LINES SHALL BE SIZED BY UNIT MANUFACTURER AND INSTALLED ACCORDING TO INSTRUCTIONS.
- 13 THE HVAC SYSTEM SHALL BE CONSTRUCTED IN ACCORDANCE WITH NFPA 101(1997).



**LEGEND**

- SUPPLY AIR VENT
- FIRE DAMPER
- BATHROOM EXHAUST
- ⊙ THERMOSTAT

**LEASING OFFICE HVAC PLAN**  
SCALE: 1/4" = 1'-0"

A/C UNIT SCHEDULE							
NO.	TOTAL BTU	CFM	O.A.	HEAT (KW)*	ELECTRICAL		COMMENTS
					VOLTAGE	MCA CKT BRKR	
1	60,000 5 TON	2000	205	10	240V,1Ø	- -	

\* HEATER SHALL BE 3 STAGE UNIT

EXHAUST FAN SCHEDULE				
LOC	CFM	VOLTAGE	TYPE	MANF.
TOILETS	75	120	VENT/LIGHT	BROAN

LEASING OFFICE HVAC PLAN  
REFLECTIONS OF ISLAND PARK  
APARTMENT COMMUNITY  
SHREVEPORT, LOUISIANA

REFLECTIONS OF ISLAND PARK  
**DAMMON ENGINEERING, INC.**  
1095 FLORIDA AVENUE 985-649-5832 SLIDELL, LA. 70458  
DAMMONENGINEERING.COM

SCALE: AS NOTED

FILE:

JOB NO. 1817

DATE: 01-12-07

SHEET

M - 1

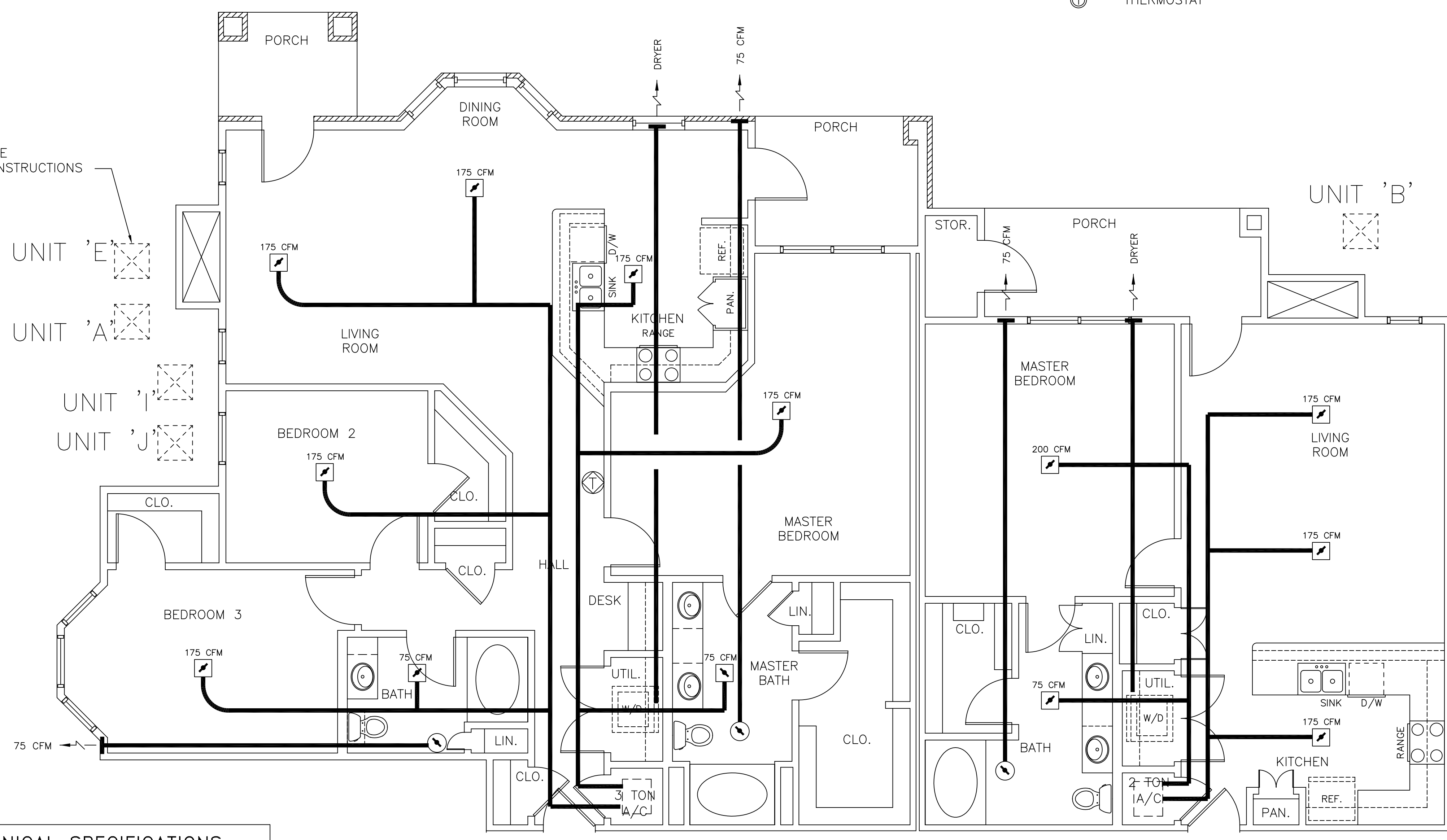
OF

**NOTES**

- 1 EXHAUST FAN EQUAL TO BROAN MODEL NO. L100 100 CFM OR EQUAL. FAN SHALL BE CONTROLLED BY SWITCH ON WALL AT LIGHT SWITCH. PROVIDE BACK DRAFT DAMPER AND FIRE DAMPER.
- 2 PROVIDE AND INSTALL WATER PROOF GRILLE IN OUTSIDE WALL FOR TOILET EXHAUST.
- 3 DRYER DISCHARGE GRILLE PER MFR.'S REQUIREMENTS. BACK DRAFT DAMPER MUST BE WEATHER AND INSECT PROOF.
- 4 EXHAUST DISCHARGE GRILLE PER MFG.'S REQUIREMENTS.
- 5 MECHANICAL CONTRACTOR SHALL SIZE ALL DUCTWORK.
- 6 ROUND FLEXIBLE DUCT TO BE UL-181, CLASS I, AIR DUCT MATERIAL.
- 7 PROVIDE U.L. LISTED 1250°F FIRESTAT IN RETURN AIR OF EACH SYSTEM UNDER 2000 CFM TO SHUT DOWN FAN IN THE EVENT OF A FIRE.
- 8 ALL SUPPLY AIR VENTS SHALL BE EQUIPPED WITH FIRE DAMPERS (CONNECT TO THE BUILDING FIRE ALARM SYSTEM AND AIR CONTROL DAMPERS WHERE APPLICABLE.)
- 9 ALL AIR HANDLING SYSTEMS SHALL BE BALANCED TO ASSURE PROPER AIR FLOWS PER PLAN.
- 10 ALL THERMOSTATS TO BE AUTOMATIC CHANGEOVER WITH HEAT-OFF-COOL SWITCH
- 11 LOCATION OF OUTDOOR UNITS AS PER ARCHITECTS RECOMMENDATION. MECHANICAL CONTRACTOR SHALL PROVIDE A 4" THK. CONCRETE REINFORCED PAD FOR CONDENSING UNIT.
- 12 REFRIGERANT LINES SHALL BE SIZED BY UNIT MANUFACTURER AND INSTALLED ACCORDING TO INSTRUCTIONS.
- 13 THE HVAC SYSTEM SHALL BE CONSTRUCTED IN ACCORDANCE WITH NFPA 101(1997).

**LEGEND**

- SUPPLY AIR VENT
- ↘ FIRE DAMPER
- BATHROOM EXHAUST
- ⊕ THERMOSTAT



OUTDOOR HEAT PUMPS SET ON 4" REINFORCED CONCRETE PAD. SPACE PER MFR.'S INSTRUCTIONS

**MECHANICAL SPECIFICATIONS**  
3 TON HEAT PUMP

EQUIPMENT SELECTIONS	
INDOOR HEAT PUMP	ADP BU3610
AIR FLOW	1200 CFM
ELECTRICAL SPECIFICATIONS	240V-1Ø
UNIT M.C.A. (INCLUDING HEAT)	60.0 AMPS
REV. CYCLE HEAT CAPACITY	34120 BTUH
AUX. HEAT CAPACITY	10.0 KW (41.6A)
OUTDOOR HEAT PUMP	DUCANE HP10B36
ELECTRICAL SPECIFICATIONS	240V-1Ø
UNIT M.C.A.	23.9 MCA
COOLING CAPACITY	34,400 BTUH S.E.E.R. 13.0

**MECHANICAL SPECIFICATIONS**  
2 TON HEAT PUMP

EQUIPMENT SELECTIONS	
INDOOR HEAT PUMP	ADP BU24210
AIR FLOW	800 CFM
ELECTRICAL SPECIFICATIONS:	240V-1Ø
UNIT M.C.A. (INCLUDING HEAT)	55.0 AMPS
REV. CYCLE HEAT CAPACITY	34120 BTUH
AUX. HEAT CAPACITY	10.0 KW
OUTDOOR HEAT PUMP	DUCANE HP10B24
ELECTRICAL SPECIFICATIONS:	240V-1Ø
UNIT M.C.A.	16.3 AMPS
COOLING CAPACITY	24,000 BTUH S.E.E.R. 13.0

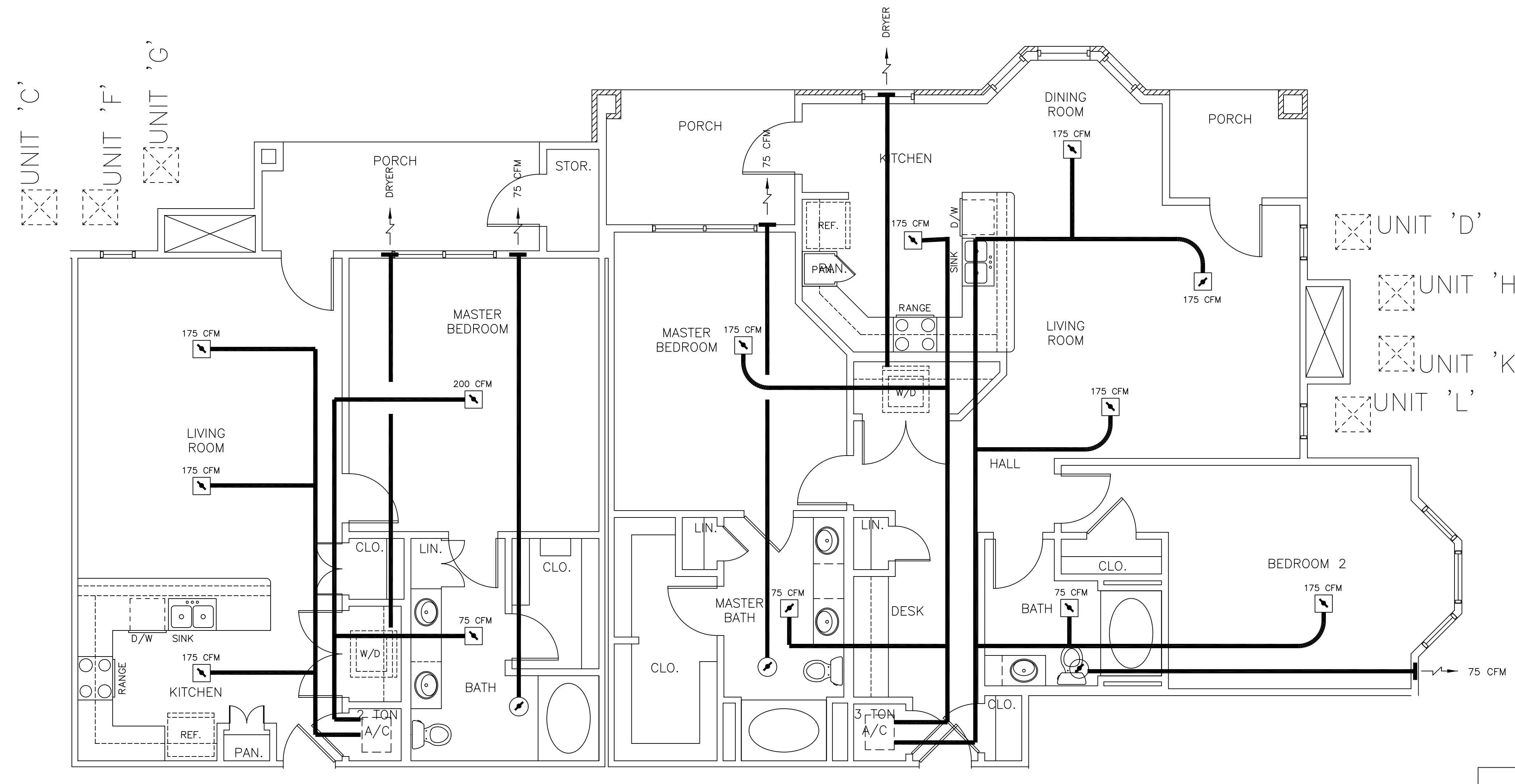
**UNITS A & B HVAC PLAN**  
SCALE: 1/4" = 1'-0"

**LEGEND**

- SUPPLY AIR VENT
- ↘ FIRE DAMPER
- BATHROOM EXHAUST
- ⊕ THERMOSTAT

**NOTES**

- 1 EXHAUST FAN EQUAL TO BROAN MODEL NO. L100 100 CFM OR EQUAL. FAN SHALL BE CONTROLLED BY SWITCH ON WALL AT LIGHT SWITCH. PROVIDE BACK DRAFT DAMPER AND FIRE DAMPER.
- 2 PROVIDE AND INSTALL WATER PROOF GRILLE IN OUTSIDE WALL FOR TOILET EXHAUST.
- 3 DRYER DISCHARGE GRILLE PER MFR.'S REQUIREMENTS. BACK DRAFT DAMPER MUST BE WEATHER AND INSECT PROOF.
- 4 EXHAUST DISCHARGE GRILLE PER MFG.'S REQUIREMENTS.
- 5 MECHANICAL CONTRACTOR SHALL SIZE ALL DUCTWORK.
- 6 ROUND FLEXIBLE DUCT TO BE UL-181, CLASS I, AIR DUCT MATERIAL.
- 7 PROVIDE U.L. LISTED 1250°F FIRESTAT IN RETURN AIR OF EACH SYSTEM UNDER 2000 CFM TO SHUT DOWN FAN IN THE EVENT OF A FIRE.
- 8 ALL SUPPLY AIR VENTS SHALL BE EQUIPPED WITH FIRE DAMPERS (CONNECT TO THE BUILDING FIRE ALARM SYSTEM AND AIR CONTROL DAMPERS WHERE APPLICABLE.)
- 9 ALL AIR HANDLING SYSTEMS SHALL BE BALANCED TO ASSURE PROPER AIR FLOWS PER PLAN.
- 10 ALL THERMOSTATS TO BE AUTOMATIC CHANGEOVER WITH HEAT-OFF-COOL SWITCH
- 11 LOCATION OF OUTDOOR UNITS AS PER ARCHITECTS RECOMMENDATION. MECHANICAL CONTRACTOR SHALL PROVIDE A 4" THK. CONCRETE REINFORCED PAD FOR CONDENSING UNIT.
- 12 REFRIGERANT LINES SHALL BE SIZED BY UNIT MANUFACTURER AND INSTALLED ACCORDING TO INSTRUCTIONS.
- 13 THE HVAC SYSTEM SHALL BE CONSTRUCTED IN ACCORDANCE WITH NFPA 101(1997).



**MECHANICAL SPECIFICATIONS  
 2 TON HEAT PUMP**

EQUIPMENT SELECTIONS	
INDOOR HEAT PUMP	ADP_BU24210
AIR FLOW	800 CFM
ELECTRICAL SPECIFICATIONS:	240V-1φ
UNIT M.C.A. (INCLUDING HEAT)	55.0 AMPS
REV. CYCLE HEAT CAPACITY	34120 BTUH
AUX. HEAT CAPACITY	10.0 KW
OUTDOOR HEAT PUMP	DUCANE HP10B24
ELECTRICAL SPECIFICATIONS:	240V-1φ
UNIT M.C.A.	16.3 AMPS
COOLING CAPACITY	24,000 BTUH S.E.E.R. 13.0

UNIT 'C'

UNIT 'D'

**UNITS C & D HVAC PLAN**  
 SCALE: 1/4" = 1'-0"

**MECHANICAL SPECIFICATIONS  
 3 TON HEAT PUMP**

EQUIPMENT SELECTIONS	
INDOOR HEAT PUMP	ADP_BU3610
AIR FLOW	1200 CFM
ELECTRICAL SPECIFICATIONS	240V-1φ
UNIT M.C.A. (INCLUDING HEAT)	60.0 AMPS
REV. CYCLE HEAT CAPACITY	34120 BTUH
AUX. HEAT CAPACITY	10.0 KW (41.6A)
OUTDOOR HEAT PUMP	DUCANE HP10B36
ELECTRICAL SPECIFICATIONS	240V-1φ
UNIT M.C.A.	23.9 MCA
COOLING CAPACITY	34,400 BTUH S.E.E.R. 13.0

SCALE: AS NOTED

FILE:

JOB NO. 1817

DATE: 01-12-07

SHEET

M-3

OF

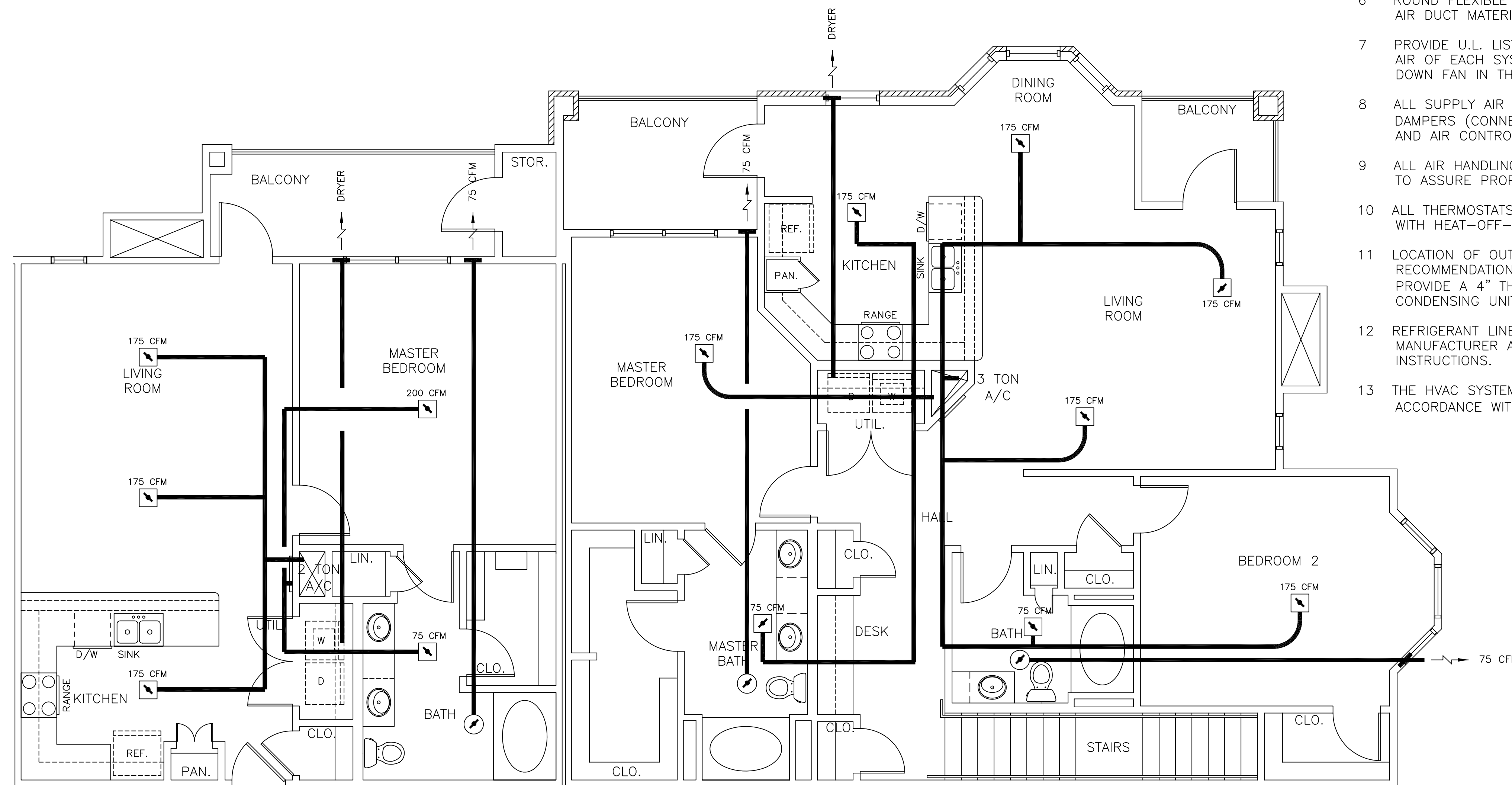


**LEGEND**

- SUPPLY AIR VENT
- ↘ FIRE DAMPER
- BATHROOM EXHAUST
- Ⓢ THERMOSTAT

**NOTES**

- 1 EXHAUST FAN EQUAL TO BROAN MODEL NO. L100 100 CFM OR EQUAL. FAN SHALL BE CONTROLLED BY SWITCH ON WALL AT LIGHT SWITCH. PROVIDE BACK DRAFT DAMPER AND FIRE DAMPER.
- 2 PROVIDE AND INSTALL WATER PROOF GRILLE IN OUTSIDE WALL FOR TOILET EXHAUST.
- 3 DRYER DISCHARGE GRILLE PER MFR.'S REQUIREMENTS. BACK DRAFT DAMPER MUST BE WEATHER AND INSECT PROOF.
- 4 EXHAUST DISCHARGE GRILLE PER MFG.'S REQUIREMENTS.
- 5 MECHANICAL CONTRACTOR SHALL SIZE ALL DUCTWORK.
- 6 ROUND FLEXIBLE DUCT TO BE UL-181, CLASS I, AIR DUCT MATERIAL.
- 7 PROVIDE U.L. LISTED 1250°F FIRESTAT IN RETURN AIR OF EACH SYSTEM UNDER 2000 CFM TO SHUT DOWN FAN IN THE EVENT OF A FIRE.
- 8 ALL SUPPLY AIR VENTS SHALL BE EQUIPPED WITH FIRE DAMPERS (CONNECT TO THE BUILDING FIRE ALARM SYSTEM AND AIR CONTROL DAMPERS WHERE APPLICABLE.)
- 9 ALL AIR HANDLING SYSTEMS SHALL BE BALANCED TO ASSURE PROPER AIR FLOWS PER PLAN.
- 10 ALL THERMOSTATS TO BE AUTOMATIC CHANGEOVER WITH HEAT-OFF-COOL SWITCH
- 11 LOCATION OF OUTDOOR UNITS AS PER ARCHITECTS RECOMMENDATION. MECHANICAL CONTRACTOR SHALL PROVIDE A 4" THK. CONCRETE REINFORCED PAD FOR CONDENSING UNIT.
- 12 REFRIGERANT LINES SHALL BE SIZED BY UNIT MANUFACTURER AND INSTALLED ACCORDING TO INSTRUCTIONS.
- 13 THE HVAC SYSTEM SHALL BE CONSTRUCTED IN ACCORDANCE WITH NFPA 101(1997).



UNIT 'G'

UNIT 'H'

**UNITS G & H HVAC PLAN**  
 SCALE: 1/4" = 1'-0"

MECHANICAL SPECIFICATIONS 2 TON HEAT PUMP	
EQUIPMENT SELECTIONS	
INDOOR HEAT PUMP	ADP BU24210
AIR FLOW	800 CFM
ELECTRICAL SPECIFICATIONS:	240V-1φ
UNIT M.C.A. (INCLUDING HEAT)	55.0 AMPS
REV. CYCLE HEAT CAPACITY	34120 BTUH
AUX. HEAT CAPACITY	10.0 KW
OUTDOOR HEAT PUMP	
OUTDOOR HEAT PUMP	DUCANE HP10B24
ELECTRICAL SPECIFICATIONS:	240V-1φ
UNIT M.C.A.	16.3 AMPS
COOLING CAPACITY	24,000 BTUH S.E.E.R. 13.0

MECHANICAL SPECIFICATIONS 3 TON HEAT PUMP	
EQUIPMENT SELECTIONS	
INDOOR HEAT PUMP	ADP BU3610
AIR FLOW	1200 CFM
ELECTRICAL SPECIFICATIONS	240V-1φ
UNIT M.C.A. (INCLUDING HEAT)	60.0 AMPS
REV. CYCLE HEAT CAPACITY	34120 BTUH
AUX. HEAT CAPACITY	10.0 KW (41.6A)
OUTDOOR HEAT PUMP	
OUTDOOR HEAT PUMP	DUCANE HP10B36
ELECTRICAL SPECIFICATIONS	240V-1φ
UNIT M.C.A.	23.9 MCA
COOLING CAPACITY	34,400 BTUH S.E.E.R. 13.0

SCALE: AS NOTED

FILE:

JOB NO. 1817

DATE: 01-12-07

SHEET

M-5

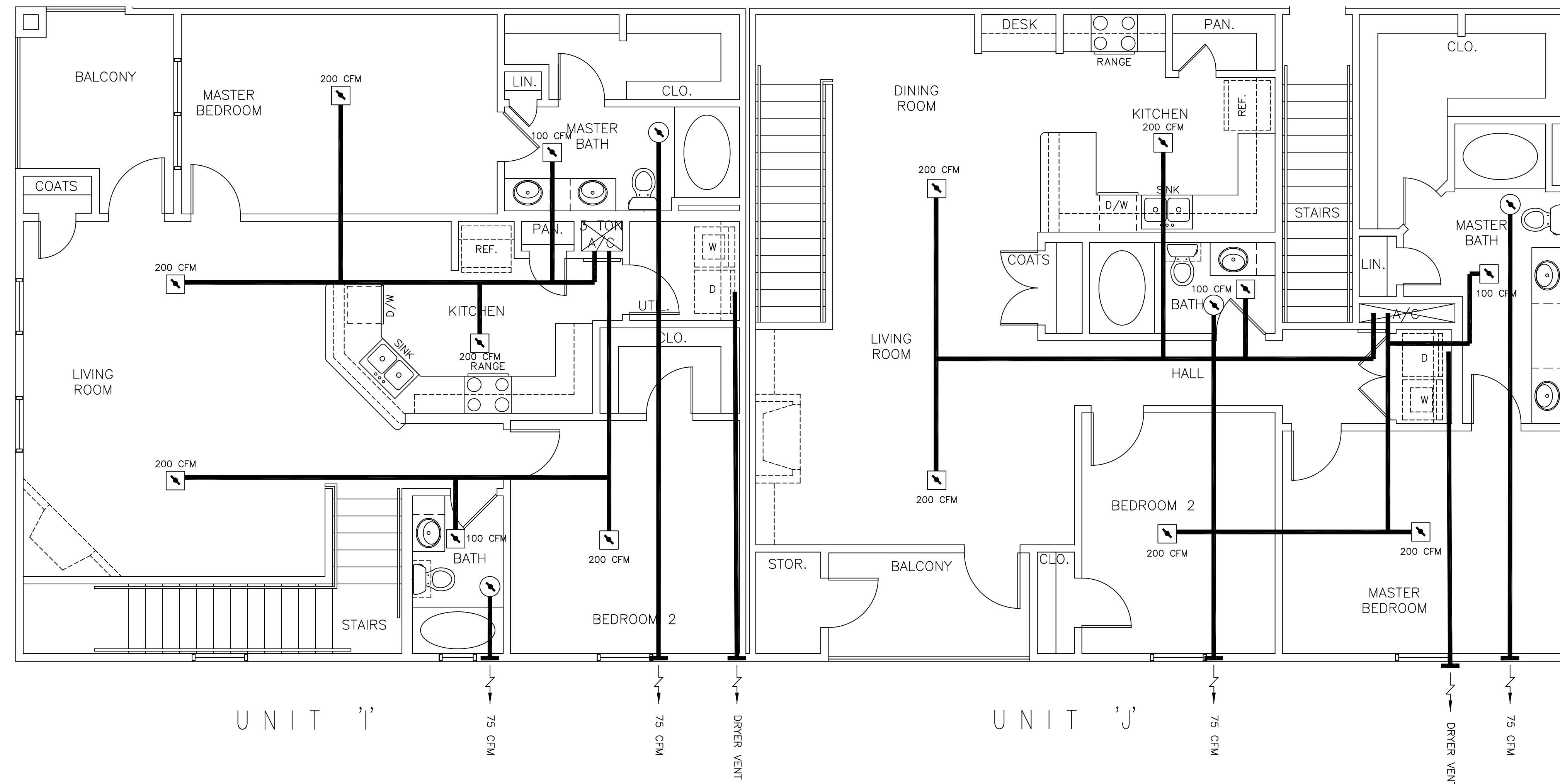
OF

**LEGEND**

- SUPPLY AIR VENT
- ↘ FIRE DAMPER
- BATHROOM EXHAUST
- Ⓢ THERMOSTAT

**NOTES**

- 1 EXHAUST FAN EQUAL TO BROAN MODEL NO. L100 100 CFM OR EQUAL. FAN SHALL BE CONTROLLED BY SWITCH ON WALL AT LIGHT SWITCH. PROVIDE BACK DRAFT DAMPER AND FIRE DAMPER.
- 2 PROVIDE AND INSTALL WATER PROOF GRILLE IN OUTSIDE WALL FOR TOILET EXHAUST.
- 3 DRYER DISCHARGE GRILLE PER MFR.'S REQUIREMENTS. BACK DRAFT DAMPER MUST BE WEATHER AND INSECT PROOF.
- 4 EXHAUST DISCHARGE GRILLE PER MFG.'S REQUIREMENTS.
- 5 MECHANICAL CONTRACTOR SHALL SIZE ALL DUCTWORK.
- 6 ROUND FLEXIBLE DUCT TO BE UL-181, CLASS I, AIR DUCT MATERIAL.
- 7 PROVIDE U.L. LISTED 1250°F FIRESTAT IN RETURN AIR OF EACH SYSTEM UNDER 2000 CFM TO SHUT DOWN FAN IN THE EVENT OF A FIRE.
- 8 ALL SUPPLY AIR VENTS SHALL BE EQUIPPED WITH FIRE DAMPERS (CONNECT TO THE BUILDING FIRE ALARM SYSTEM AND AIR CONTROL DAMPERS WHERE APPLICABLE.)
- 9 ALL AIR HANDLING SYSTEMS SHALL BE BALANCED TO ASSURE PROPER AIR FLOWS PER PLAN.
- 10 ALL THERMOSTATS TO BE AUTOMATIC CHANGEOVER WITH HEAT-OFF-COOL SWITCH
- 11 LOCATION OF OUTDOOR UNITS AS PER ARCHITECTS RECOMMENDATION. MECHANICAL CONTRACTOR SHALL PROVIDE A 4" THK. CONCRETE REINFORCED PAD FOR CONDENSING UNIT.
- 12 REFRIGERANT LINES SHALL BE SIZED BY UNIT MANUFACTURER AND INSTALLED ACCORDING TO INSTRUCTIONS.
- 13 THE HVAC SYSTEM SHALL BE CONSTRUCTED IN ACCORDANCE WITH NFPA 101(1997).



**UNITS I & J HVAC PLAN**  
 SCALE: 1/4" = 1'-0"

MECHANICAL SPECIFICATIONS	
3 TON HEAT PUMP	
EQUIPMENT SELECTIONS	
INDOOR HEAT PUMP	ADP BU3610
AIR FLOW	1200 CFM
ELECTRICAL SPECIFICATIONS	240V-1Ø
UNIT M.C.A. (INCLUDING HEAT)	60.0 AMPS
REV. CYCLE HEAT CAPACITY	34120 BTUH
AUX.HEAT CAPACITY	10.0 KW (41.6A)
OUTDOOR HEAT PUMP	DUCANE HP10B36
ELECTRICAL SPECIFICATIONS	240V-1Ø
UNIT M.C.A.	23.9 MCA
COOLING CAPACITY	34,400 BTUH S.E.E.R. 13.0

SCALE: AS NOTED

FILE:

JOB NO.1817

DATE: 01-12-07

SHEET

M-6

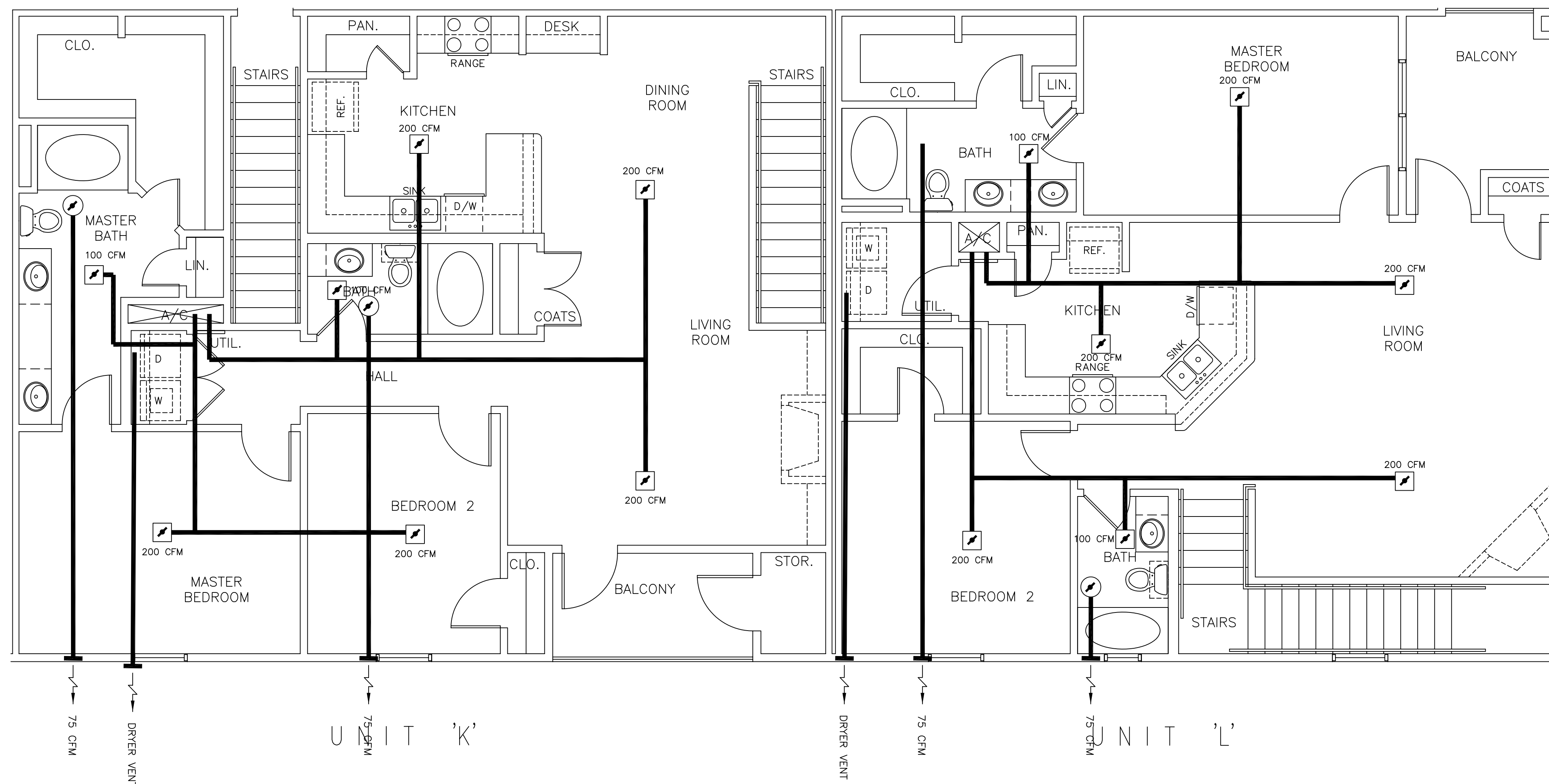
OF

**LEGEND**

- SUPPLY AIR VENT
- ↘ FIRE DAMPER
- BATHROOM EXHAUST
- ⊕ THERMOSTAT

**NOTES**

- 1 EXHAUST FAN EQUAL TO BROAN MODEL NO. L100 100 CFM OR EQUAL. FAN SHALL BE CONTROLLED BY SWITCH ON WALL AT LIGHT SWITCH. PROVIDE BACK DRAFT DAMPER AND FIRE DAMPER.
- 2 PROVIDE AND INSTALL WATER PROOF GRILLE IN OUTSIDE WALL FOR TOILET EXHAUST.
- 3 DRYER DISCHARGE GRILLE PER MFR.'S REQUIREMENTS. BACK DRAFT DAMPER MUST BE WEATHER AND INSECT PROOF.
- 4 EXHAUST DISCHARGE GRILLE PER MFG.'S REQUIREMENTS.
- 5 MECHANICAL CONTRACTOR SHALL SIZE ALL DUCTWORK.
- 6 ROUND FLEXIBLE DUCT TO BE UL-181, CLASS I, AIR DUCT MATERIAL.
- 7 PROVIDE U.L. LISTED 1250°F FIRESTAT IN RETURN AIR OF EACH SYSTEM UNDER 2000 CFM TO SHUT DOWN FAN IN THE EVENT OF A FIRE.
- 8 ALL SUPPLY AIR VENTS SHALL BE EQUIPPED WITH FIRE DAMPERS (CONNECT TO THE BUILDING FIRE ALARM SYSTEM AND AIR CONTROL DAMPERS WHERE APPLICABLE.)
- 9 ALL AIR HANDLING SYSTEMS SHALL BE BALANCED TO ASSURE PROPER AIR FLOWS PER PLAN.
- 10 ALL THERMOSTATS TO BE AUTOMATIC CHANGEOVER WITH HEAT-OFF-COOL SWITCH
- 11 LOCATION OF OUTDOOR UNITS AS PER ARCHITECTS RECOMMENDATION. MECHANICAL CONTRACTOR SHALL PROVIDE A 4" THK. CONCRETE REINFORCED PAD FOR CONDENSING UNIT.
- 12 REFRIGERANT LINES SHALL BE SIZED BY UNIT MANUFACTURER AND INSTALLED ACCORDING TO INSTRUCTIONS.
- 13 THE HVAC SYSTEM SHALL BE CONSTRUCTED IN ACCORDANCE WITH NFPA 101(1997).



**UNITS K & L HVAC PLAN**  
 SCALE: 1/4" = 1'-0"

MECHANICAL SPECIFICATIONS	
3 TON HEAT PUMP	
EQUIPMENT SELECTIONS	
INDOOR HEAT PUMP	ADP BU3610
AIR FLOW	1200 CFM
ELECTRICAL SPECIFICATIONS	240V-1Ø
UNIT M.C.A. (INCLUDING HEAT)	60.0 AMPS
REV. CYCLE HEAT CAPACITY	34120 BTUH
AUX.HEAT CAPACITY	10.0 KW (41.6A)
OUTDOOR HEAT PUMP	DUCANE HP10B36
ELECTRICAL SPECIFICATIONS	240V-1Ø
UNIT M.C.A.	23.9 MCA
COOLING CAPACITY	34,400 BTUH S.E.E.R. 13.0

SCALE:AS NOTED

FILE:

JOB NO.1817

DATE:01-12-07

SHEET

M-7

OF