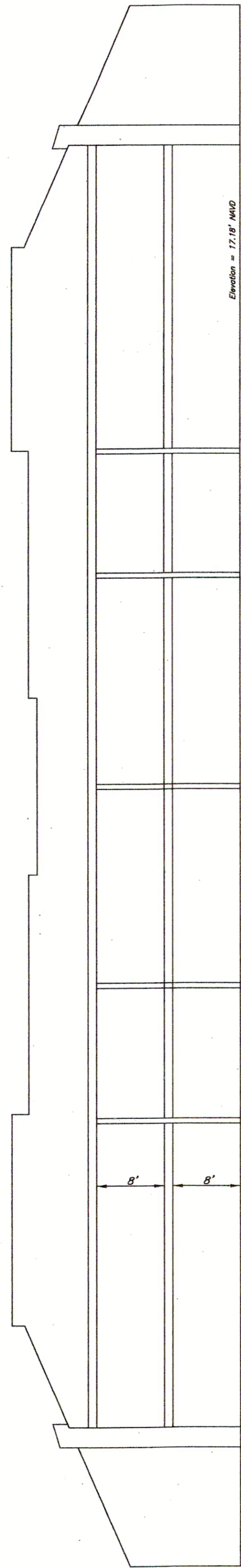


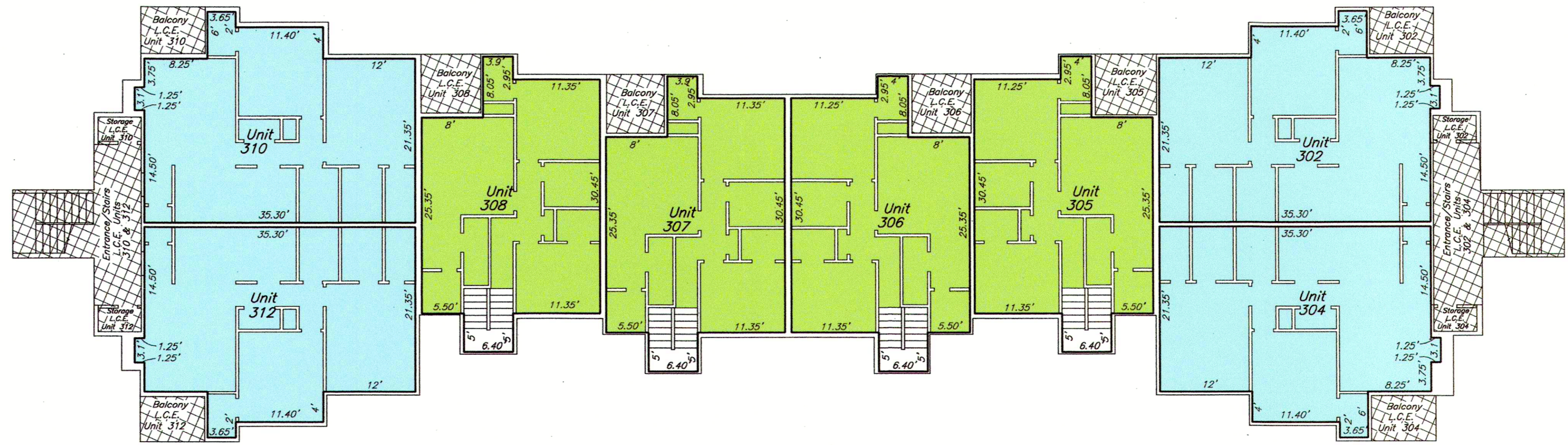
PORTION OF
SECTION 54, T.7 S., R.11 E.
ST. TAMMANY PARISH, LA.



The Condominiums at Parkview



Horizontal Elevation
Building No. 3



Second Floor
Building No. 3

- 2/2 825 living sq. ft.
- 3/2.5 1440 living sq. ft.

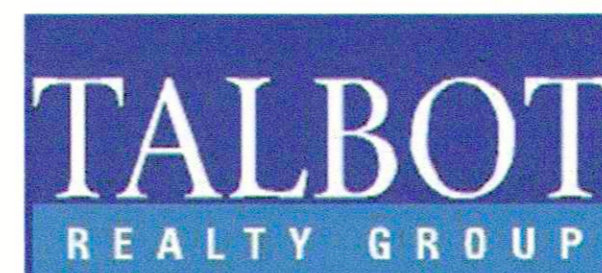


First Floor
Building No. 3

Unit	First Floor	Second Floor	Total
Unit 301	825.03 Sq. Ft.	825.03 Sq. Ft.	1,408
Unit 302	825.03 Sq. Ft.	825.03 Sq. Ft.	1,408
Unit 303	825.03 Sq. Ft.	825.03 Sq. Ft.	1,408
Unit 304	825.03 Sq. Ft.	825.03 Sq. Ft.	1,408
Unit 305	677.20 Sq. Ft.	710.96 Sq. Ft.	2,368
Unit 306	677.20 Sq. Ft.	710.96 Sq. Ft.	2,368
Unit 307	677.20 Sq. Ft.	710.96 Sq. Ft.	2,368
Unit 308	677.20 Sq. Ft.	710.96 Sq. Ft.	2,368
Unit 309	825.03 Sq. Ft.	825.03 Sq. Ft.	1,408
Unit 310	825.03 Sq. Ft.	825.03 Sq. Ft.	1,408
Unit 311	825.03 Sq. Ft.	825.03 Sq. Ft.	1,408
Unit 312	825.03 Sq. Ft.	825.03 Sq. Ft.	1,408

Square footage was calculated from face of interior wall to face of interior wall of units.

Unit -
 C.E. - Common Element
 L.C.E. - Limited Common Element



THE SERVITUDES AND RESTRICTIONS SHOWN ON THIS SURVEY ARE LIMITED TO THOSE SET FORTH IN DESCRIPTION FURNISHED US AND THERE IS NO REPRESENTATION THAT ALL APPLICABLE SERVITUDES AND RESTRICTIONS ARE SHOWN HEREON. THE SURVEYOR HAS MADE NO TITLE SEARCH OR PUBLIC RECORD SEARCH IN COMPILING THE DATA FOR THIS SURVEY.

THE FEDERAL INSURANCE ADMINISTRATION FLOOD HAZARD BOUNDARY MAP INDICATES THAT THE ABOVE DESCRIBED PROPERTY IS LOCATED IN FIA ZONE

Date: June 15, 2006 Scale: 1" = 10'

This plot represents an actual ground survey made by me or under my direct supervision and control and meets the requirements for the Minimum Standards for Property Boundary Surveys as found in Louisiana Administrative Code TITLE 46:LXI, Chapter 25 for a Class "B" survey.
 Made at the request of The Steeg Law Firm, L.L.C.

Gilbert, Kelly & Couturie, Inc., Surveying & Engineering
 2121 N. Causeway Blvd., Metairie LA 70001 (504) 836-2121