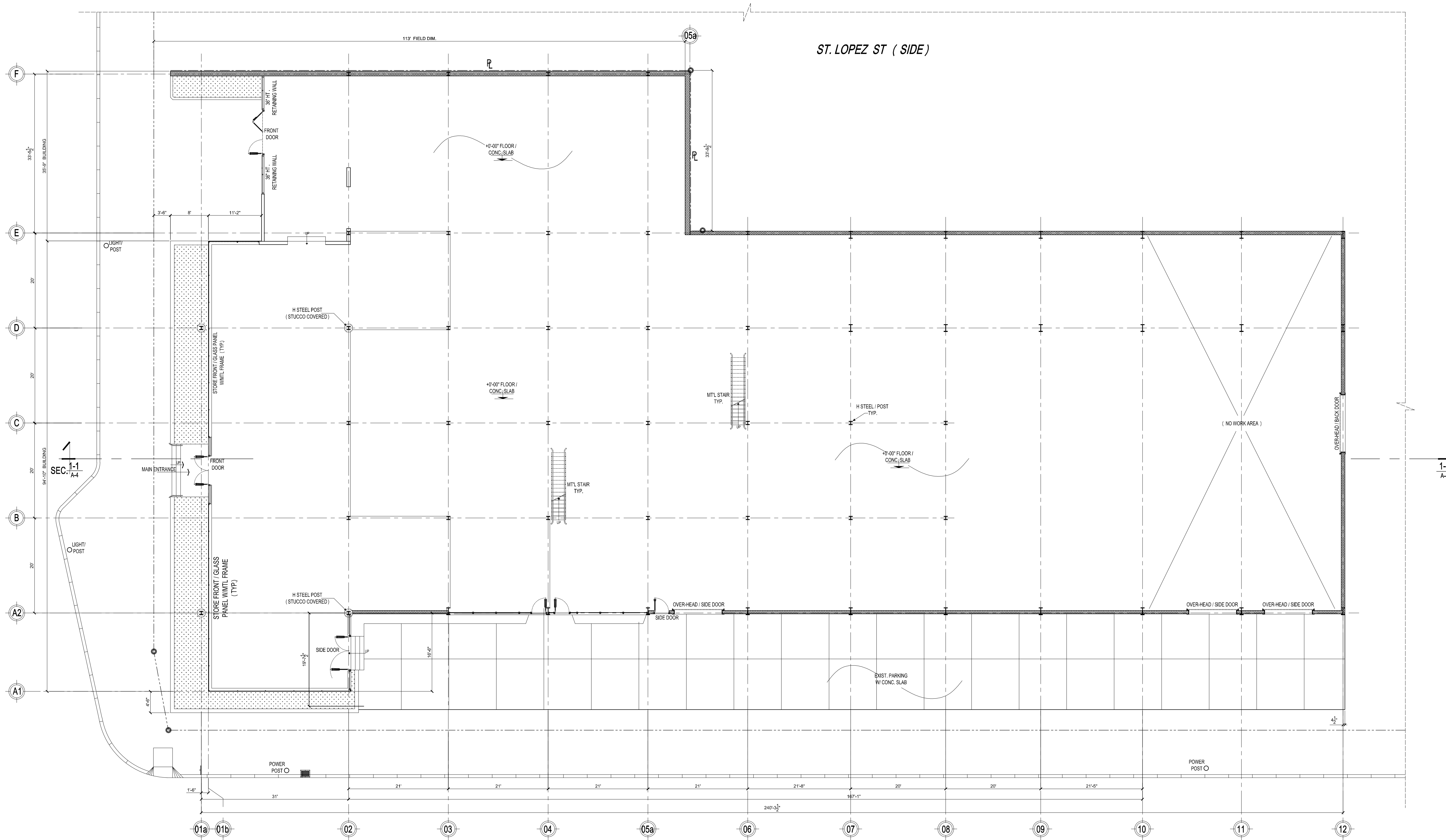
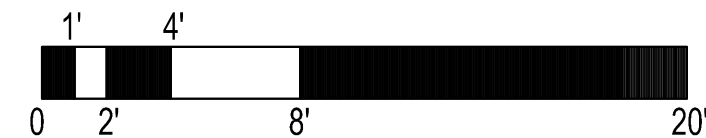


TULANE AVENUE



EXIST. FLOOR PLAN  
 SCALE : 1" = 10'-0"



ST. SALCEDO ST

EXIST. CMU WALL

ST. LOPEZ ST (SIDE)

1/4" = 1'

CONSULTING ENGINEER

REVISIONS

3101 TULANE AVE  
 NEW ORLEANS , LA 70119

EXIST. FLOOR PLAN

DATE :

SCALE : AS SHOWN

DRAWN BY :

PROJECT No :

SHEET No :

**A-2**  
 OF 06 SHEETS

LOUIS KONG ARCHITECTURE, L.L.C.  
 5726 ST. CHARLES AVENUE  
 NEW ORLEANS, LA 70115  
 (504) 837-0764 FAX: (504) 837-0996