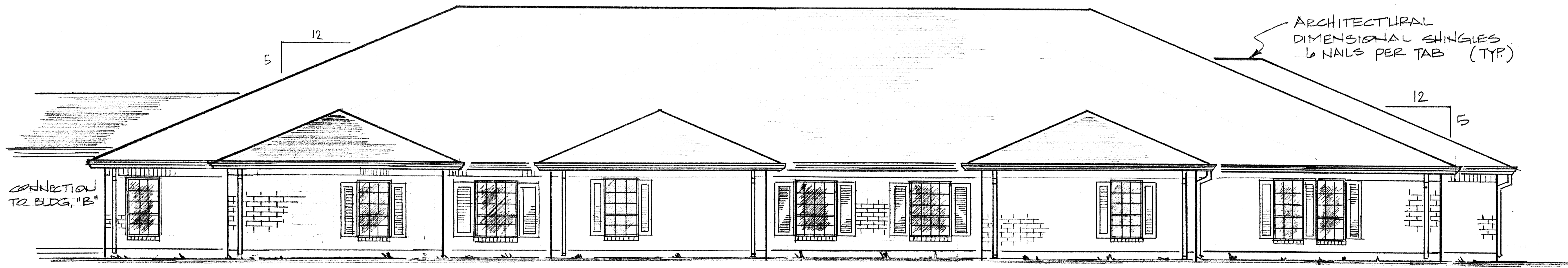


RIGHT ELEVATION  
SCALE 3/16" = 1'-0"

NOTE!  
BUILDING "A" SHOWN  
BUILDING "C" SIMILAR & OPPOSITE



REAR ELEVATION  
SCALE 3/16" = 1'-0"

NOTE  
BUILDING "A" SHOWN  
BUILDING "C" SIMILAR & OPPOSITE

ANDERSON ASSISTED LIVING  
AT SUMMERFIELD  
4108 DAUPHINE ST. SLIDELL, LOUISIANA 70458

DATE:  
FEB 21, 2013  
PROJECT:  
AAL-002

A7