

DAMMON
ENGINEERING, INC.

CHIEF ENGINEER
EMMETT
DAMMON, P.E.

CHIEF ARCHITECT
ROBERT
WILTSE

1095 FLORIDA AVENUE
SLIDELL, LA. 70458
OFFICE: 985-649-5832
FAX: 985-641-5950

WEBSITE:
WWW.DAMMONENGINEERING.COM

EMAIL:
DAMMONENG@BELLSOUTH.NET

ARCHITECTURE
ENGINEERING
STUDIES
PLANNING
INVESTIGATION
EXPERT WITNESS

SCHEME
ONE

ANDERSON
MEMORY CARE
APARTMENTS
-
SLIDELL, LA

SITE
PLAN

REV:

SCALE: AS NOTED

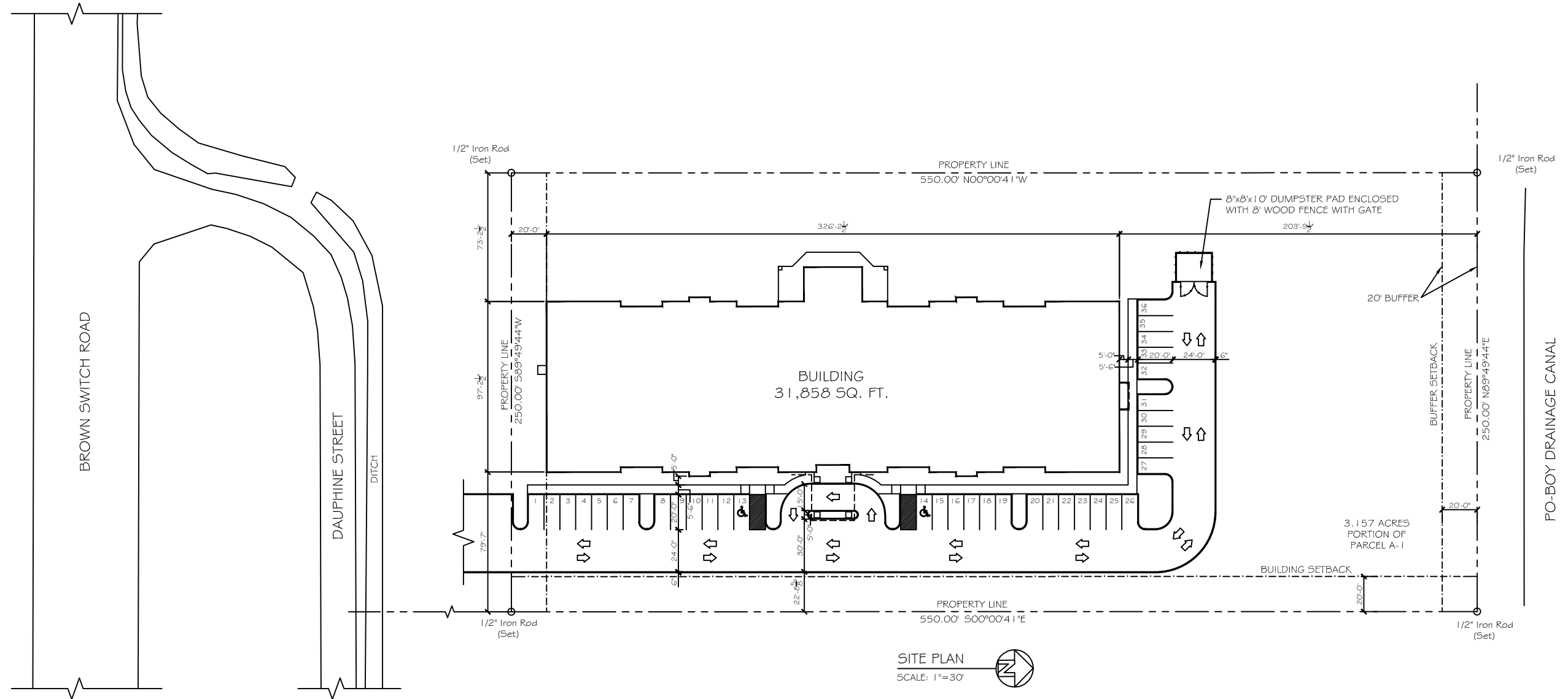
JOB#:

DATE: 07-15-10

SHEET

C-2

OF



SITE PLAN
SCALE: 1"=30'

PARKING REQUIREMENTS-	GROUP I - INSTITUTIONAL ASSISTED LIVING OCCUPANCY
	PROVIDE .5 SPACE FOR EVERY BED, 1 SPACE PER DOCTOR, AND 2 SPACES FOR EVERY 3 EMPLOYEES ON DUTY
	50 BEDS = 25 SPACES 1 DOCTOR = 1 SPACE 15 EMPLOYEES = 10 SPACES TOTAL SPACES = 36 SPACES
PARKING SPACES REQUIRED =	36 (INCLUDING 2 HANDICAP PARKING SPACES)
PARKING SPACES PROVIDED =	36 (INCLUDING 2 HANDICAP PARKING SPACES)