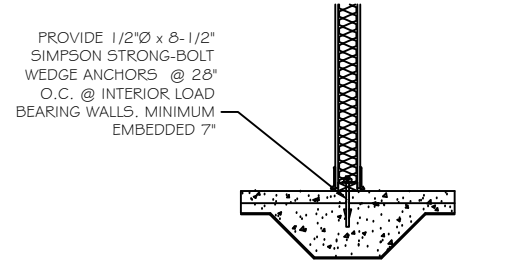
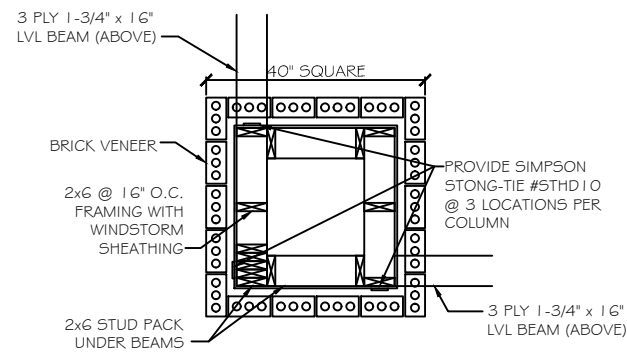


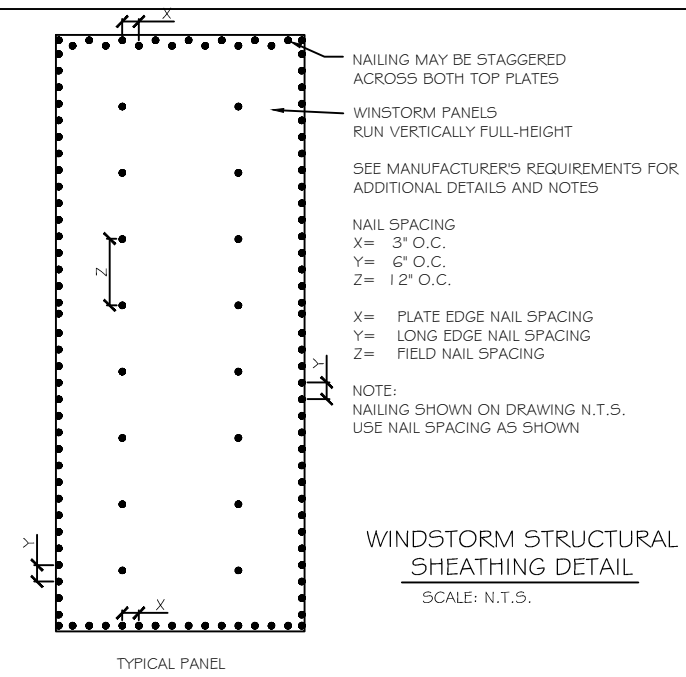
(MWFRS COMPONENTS ONLY SHOWN)
EXTERIOR WALL SECTION
 SCALE: 3/4" = 1'-0"



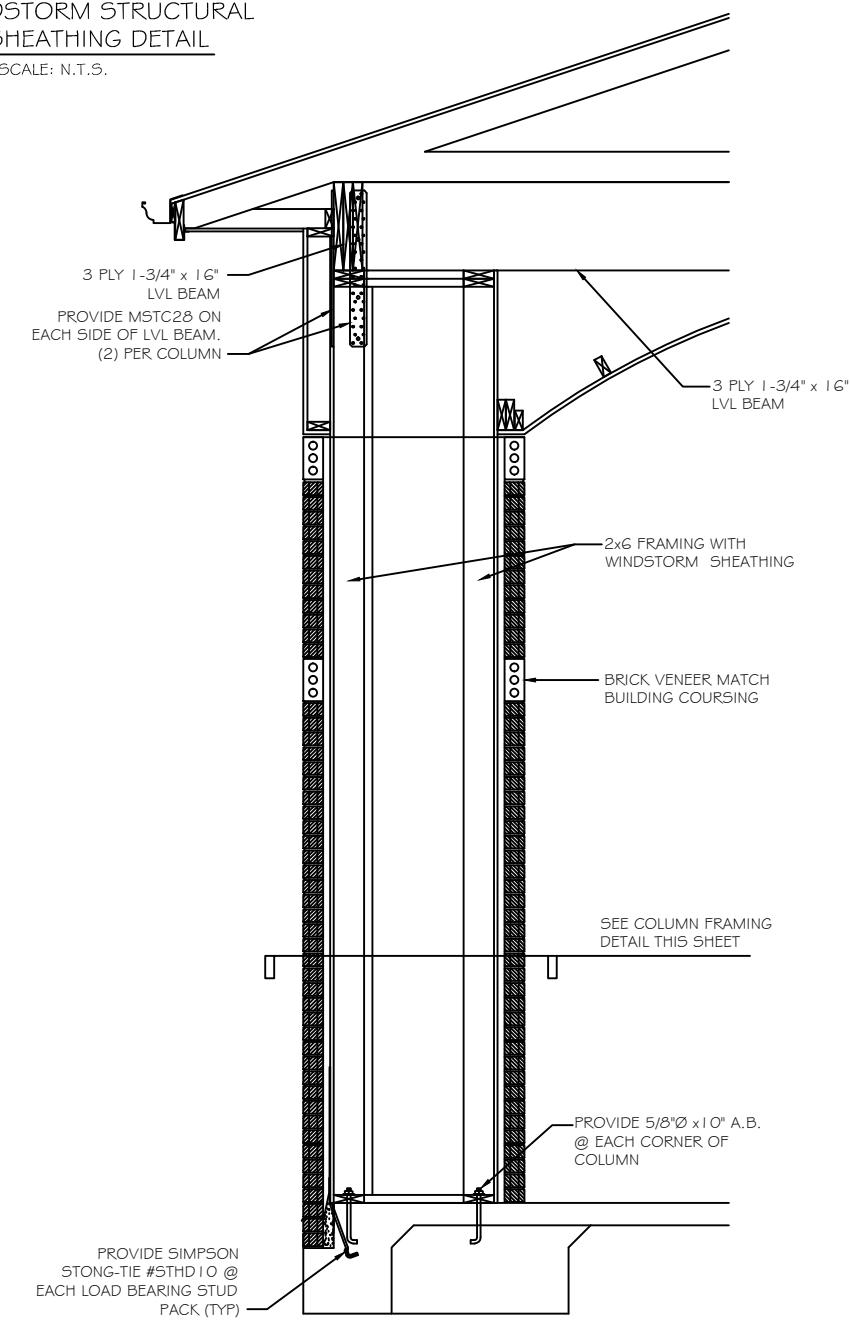
(MWFRS COMPONENTS ONLY SHOWN)
INTERIOR LOAD BEARING WALL SECTION
 SCALE: 3/4" = 1'-0"



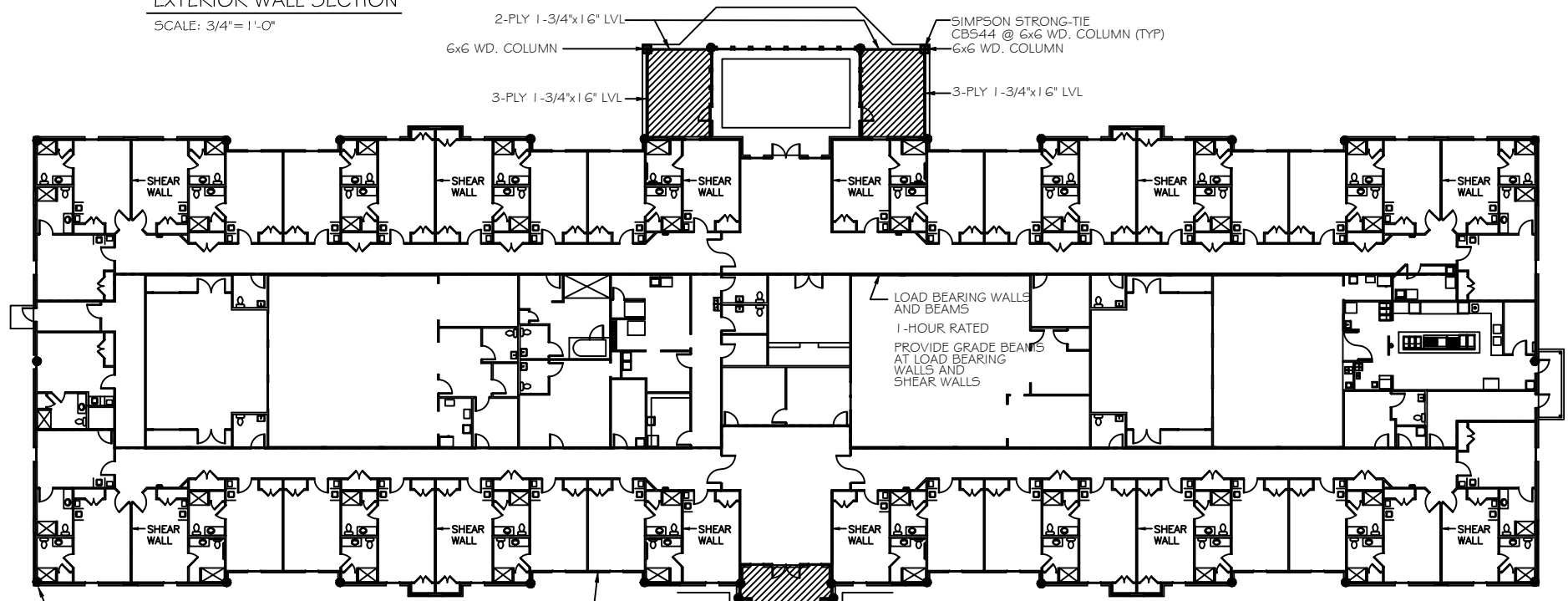
PORTE COCHERE COLUMN FRAMING DETAIL
 SCALE: 3/4" = 1'-0"



WINDSTORM STRUCTURAL SHEATHING DETAIL
 SCALE: N.T.S.



PORTE COCHERE COLUMN SECTION
 SCALE: 3/4" = 1'-0"

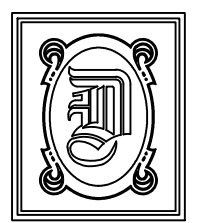


FRAMING CONNECTION PLAN
 SCALE: 1/16" = 1'-0"

FRAMING PLAN LEGEND
 ● SIMPSON 5THD10
 — LOAD-BEARING WALL OR BEAM - SEE ARCH PLAN

SIMPSON #5THD10 CORNER HOLDDOWN 38 LOCATIONS AS SHOWN INSTALL PER MANUFACTURER'S REQUIREMENTS
 SIMPSON LTS16 HURRICANE TIE @ EACH TRUSS
 NOTE: SEE TRUSS MANUFACTURER'S REQUIREMENTS FOR ADDITIONAL CONNECTIONS
 TYPICAL WALL FRAMING:
 5/8" x 10" ANCHOR BOLTS @ 48" O.C.
 7/16" WINDSTORM OSB STRUCTURAL SHEATHING FULL HEIGHT - INSTALL VERTICALLY NAILING AND OPENINGS PER MANUFACTURER'S REQUIREMENTS

PROVIDE SIMPSON STRONG-TIE #5THD10 @ EACH LOAD BEARING STUD PACK (TYP)
 PROVIDE 5/8" x 10" A.B. @ EACH CORNER OF COLUMN
 SEE COLUMN FRAMING DETAIL THIS SHEET
 BRICK VENEER MATCH BUILDING COURSING
 2x6 FRAMING WITH WINDSTORM SHEATHING
 3 PLY 1-3/4" x 16" LVL BEAM



DAMMON ENGINEERING, INC.

CHIEF ENGINEER
 EMMETT DAMMON, P.E.

CHIEF ARCHITECT
 ROBERT WILTSE

1095 FLORIDA AVENUE
 SLIDELL, LA. 70458
 OFFICE: 985-649-5832
 FAX: 985-641-5950

WEBSITE:
 WWW.DAMMONENGINEERING.COM

EMAIL:
 DAMMONENG@BELLSOUTH.NET

ARCHITECTURE
 ENGINEERING
 STUDIES
 PLANNING
 INVESTIGATION
 EXPERT WITNESS

ANDERSON
 MEMORY CARE
 RON DUHE
 4104 DAUPHINE ST.
 SLIDELL, LA

MWFRS
 PLAN

REV:

SCALE: AS NOTED

JOB#:

-DATE: 07-15-10

SHEET

A-1

OF