

**DAMMON
ENGINEERING, INC.**

CHIEF ENGINEER
EMMETT
DAMMON, P.E.

CHIEF ARCHITECT
ROBERT
WILTSE

1095 FLORIDA AVENUE
SLIDELL, LA. 70458
OFFICE: 985-649-5832
FAX: 985-641-5950

WEBSITE:
WWW.DAMMONENGINEERING.COM

EMAIL:
DAMMONENG@BELLCSOUTH.NET

ARCHITECTURE
ENGINEERING
STUDIES
PLANNING
INVESTIGATION
EXPERT WITNESS

ANDERSON
MEMORY CARE
4104 DAUPHINE ST.
SLIDELL, LA
70458

**SITE
PLAN**

REV:

SCALE: AS NOTED

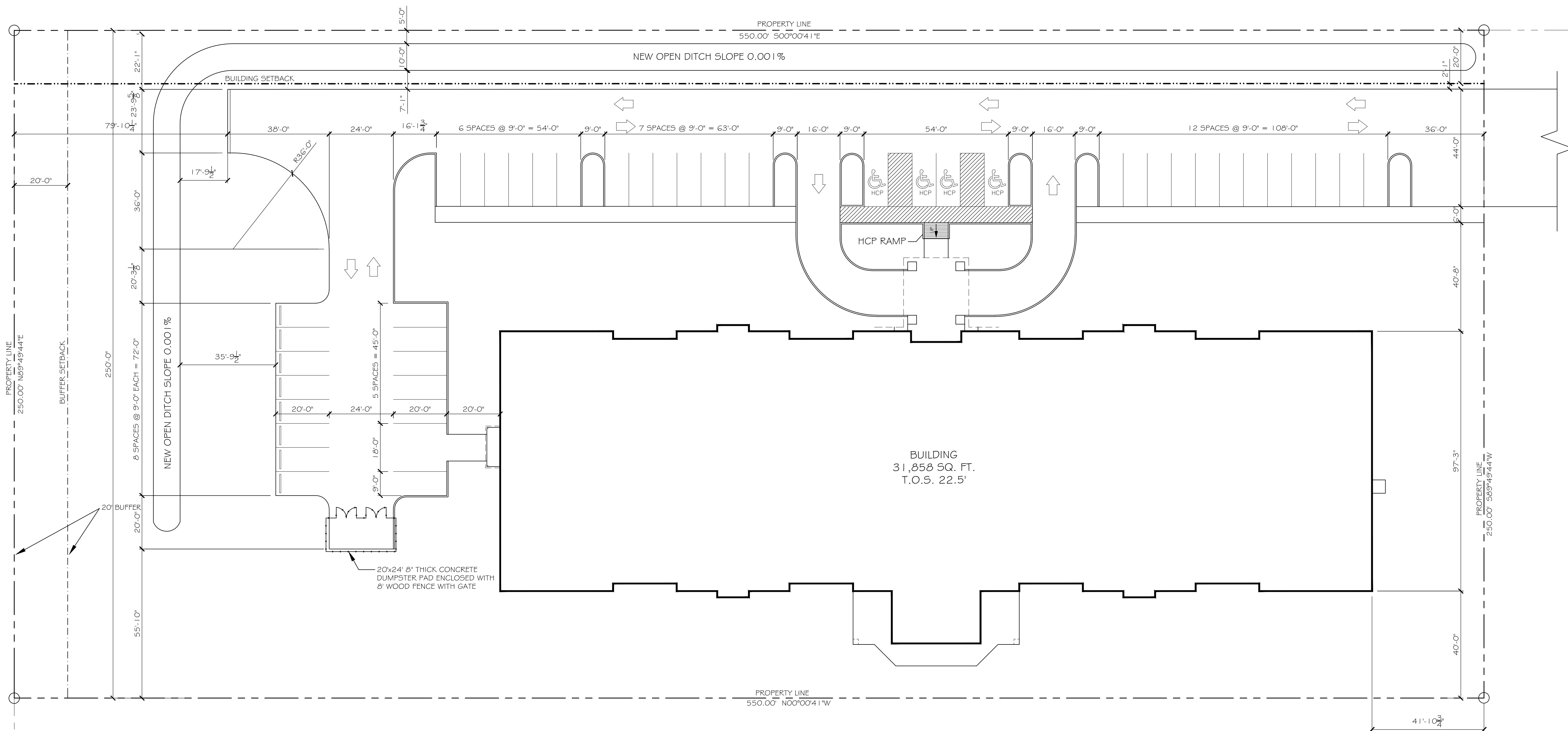
JOB#:

DATE:

SHEET

C-1

OF



PARKING REQUIREMENTS-	
	GROUP 1 - INSTITUTIONAL ASSISTED LIVING OCCUPANCY
	PROVIDE .5 SPACE FOR EVERY BED, 1 SPACE PER DOCTOR, AND 2 SPACES FOR EVERY 3 EMPLOYEES ON DUTY
	50 BEDS = 25 SPACES
	1 DOCTOR = 1 SPACE
	15 EMPLOYEES = 10 SPACES
	TOTAL SPACES = 36 SPACES
PARKING SPACES REQUIRED =	36 (INCLUDING 2 HANDICAP PARKING SPACES)
PARKING SPACES PROVIDED =	39 (INCLUDING 2 HANDICAP PARKING SPACES)

SITE PLAN
SCALE: 1"=20'

3.157 ACRES
PORTION OF
PARCEL A-1

SITE LEGEND	
---	PROPERTY LINE
- - - - -	UTILITY / EASEMENT LINE
△	TRIANGULAR SITE LINE
---	BUILDING SETBACK MINIMUM
---	BUFFER ZONE LIMITS
○	OPAQUE BUFFER FENCE
---	BUILDING OUTLINE
♿	HANDICAP PARKING
○	HANDICAP PARKING SIGN
■	TRASH RECEPTACLE

SITE PREP NOTES:

1. REMOVE EXISTING NEAR SURFACE LOOSE TAN SAND AND MEDIUM STIFF SILTY CLAYS TO A DEPTH REQUIRED TO EXPOSE EXISTING STIFF AND VERY STIFF CLAYS, UNDER ALL NEW CONSTRUCTION AND PAVING. PROOF-ROLL AND REMOVE ANY SOFT, YIELDING OR PUMPING SPOTS.
2. NEW CONCRETE FOOTINGS ARE TO BE SEATED IN THE FIRM, NATURALLY OCCURRING STIFF TO VERY STIFF CLAY OR SILTY CLAYS TO PROVIDE AN ALLOWABLE SOIL CAPACITY OF 1,500 PSF.
3. PROVIDE AND MAINTAIN IMMEDIATE SITE DRAINAGE BEFORE, DURING AND AFTER CONSTRUCTION. PROVIDE GRADING, SWALES AND SUMP PUMPS AS MAY BE REQUIRED TO IMMEDIATELY DRAIN ALL RAIN WATER FROM THE CONSTRUCTION AREA.
4. ALL EXCAVATED MATERIAL SHOULD BE REPLACED WITH CONTROLLED-COMPACTED STRUCTURAL FILL INSTALLED IN 6"-8" LIFTS. THIS STRUCTURAL FILL, WHICH COULD ALSO BE USED TO RAISE THE SITE GRADE, COULD CONSIST OF RED CLAY-SAND TYPE MATERIAL HAVING LESS THAN 30% FINES PASSING THE No.200 SIEVE. IT SHOULD BE COMPACTED TO AT LEAST 95% OF MAXIMUM DRY DENSITY AT OPTIMUM MOISTURE CONTENT ACCORDING TO ASTM D-698.
5. ESTIMATED SETTLEMENTS OF UP TO ONE INCH ARE POSSIBLE WITH A MODERATE SUSCEPTIBILITY TO VOLUMETRIC CHANGE RESULTING IN HEAVE AND SHRINKAGE DURING VARIATIONS OF HEAVY PRECIPITATION AND DROUGHT. GOOD ROOF AND SURFACE DRAINAGE WITH POSITIVE COLLECTION AND RUNOFF AND SLOPES AWAY FROM BUILDING SHOULD BE ASSURED.
6. MONITORING OF PROOF-ROLLING AND SELECTION, PLACEMENT AND COMPACTION OF FILL BY A SOILS ENGINEER, IS RECOMMENDED