

DAMMON ENGINEERING, INC.

CHIEF ENGINEER
EMMETT
DAMMON, P.E.

CHIEF ARCHITECT
ROBERT
WILTSE

1095 FLORIDA AVENUE
SLIDELL, LA. 70458
OFFICE: 985-649-5832
FAX: 985-641-5950

WEBSITE:
WWW.DAMMONENGINEERING.COM

EMAIL:
DAMMONENG@BELLSOUTH.NET

- ARCHITECTURE
- ENGINEERING
- STUDIES
- PLANNING
- INVESTIGATION
- EXPERT WITNESS

ANDERSON
MEMORY CARE
4104 DAUPHINE ST.
SLIDELL, LA
70458

PAVING PLAN

REV:

SCALE: AS NOTED

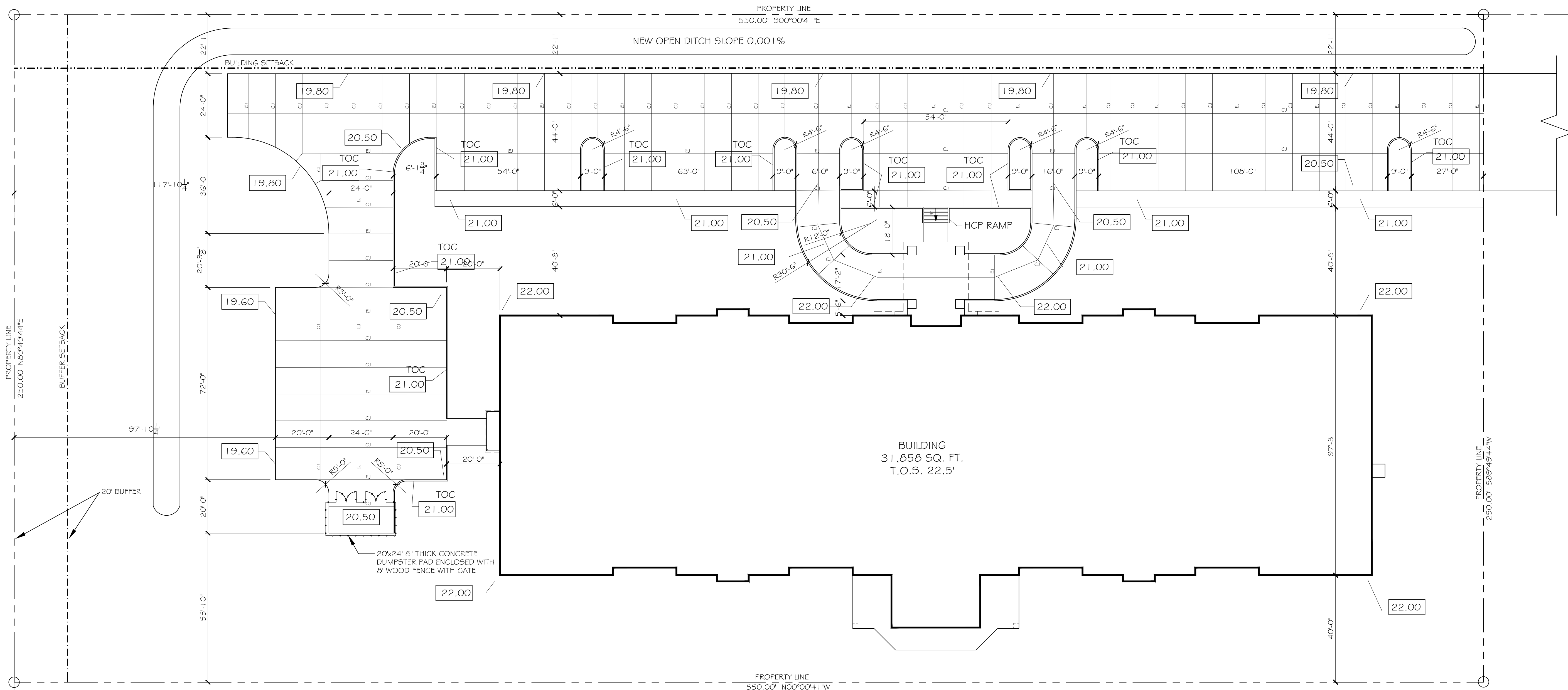
JOB#:

DATE:

SHEET

C-2

OF



PAVING PLAN
SCALE: 1"=20'

3.157 ACRES
PORTION OF
PARCEL A-1



LEGEND

- PROPERTY LINE
- UTILITY / EASEMENT LINE
- TRIANGULAR SITE LINE
- BUILDING SETBACK MINIMUM
- BUFFER ZONE LIMITS
- OPAQUE BUFFER FENCE
- BUILDING OUTLINE
- NEW DROP INLET w/TEMP. SILT FENCE
- CONTROL JOINT
- EXPANSION JOINT
- T.O. GRATE ELEVATION
- INVERT ELEVATION
- NEW ELEVATIONS
- EXISTING ELEVATIONS
- TEMPORARY SILT FENCING
- NEW 6" CURB, SEE DETAIL THIS SHEET

