

DAMMON
ENGINEERING, INC.

CHIEF ENGINEER
EMMETT
DAMMON, P.E.
CHIEF ARCHITECT
ROBERT
WILTSE

554 OLD SPANISH TRAIL
SLIDELL, LA, 70458
OFFICE: 985-649-5632
FAX: 985-641-5950

WEBSITE:
WWW.DAMMONENGINEERING.COM
EMAIL:
DAMMONENG@BELL.SOUTH.NET

ARCHITECTURE
ENGINEERING
STUDIES
PLANNING
INVESTIGATION
EXPERT WITNESS

NEW
APARTMENTS

CASEY CIVIL, LLC
LOT 2A
TERRACE AVE
SLIDELL, LA

SITE
PLAN

REV:

SCALE: AS NOTED

JOB#:

DATE: 06-16-11

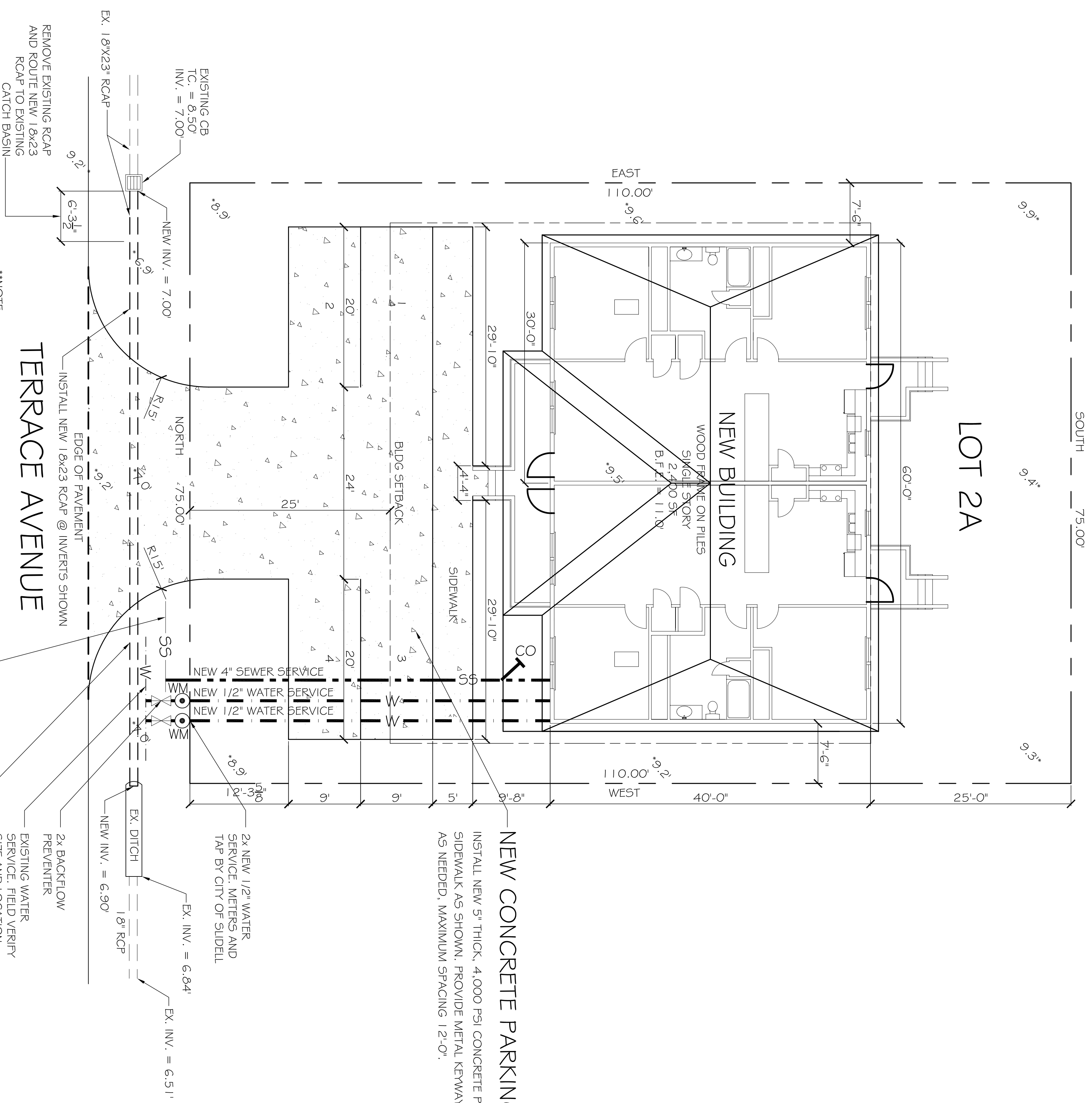
SHEET

C-1

OF

SITE LEGEND

—————	PROPERTY LINE
—————	UTILITY / EASEMENT LINE
—————	TRIANGULAR SITE LINE
—————	BUILDING SETBACK MIN.
—————	LANDSCAPING/BUFFER
—————	ZONE LIMITS



EXISTING CB
TC. = 8.50'
INV. = 7.00'

NEW INV. = 7.00'

EX. 18"x23" RCAP

REMOVE EXISTING RCAP
AND ROUTE NEW 18"x23
RCAP TO EXISTING
CATCH BASIN

EDGE OF PAVEMENT

INSTALL NEW 18"x23 RCAP @ INVERTS SHOWN

TERRACE AVENUE

EXISTING SEWER
SERVICE, FIELD VERIFY
SIZE AND LOCATION

2x BACKFLOW
PREVENTER

EXISTING WATER
SERVICE, FIELD VERIFY
SIZE AND LOCATION

DRAINAGE ALONG TERRACE AVE:

ALL OPEN DITCH ALONG NORTH PROPERTY LINE MUST BE
CONVERTED TO SUBSURFACE DRAINAGE PER CITY OF SLIDELL
REQUIREMENTS. INSTALL NEW 18"x23 RCAP ALONG ENTIRE
LENGTH OF NORTH PROPERTY LINE AS SHOWN. REWORK EXISTING
DITCH IMMEDIATELY BEYOND END OF NEW PIPE TO ENSURE
PROPER INVERTS.

**NOTE
THE CITY OF SLIDELL REQUIRES THE MINIMUM FINISHED FLOOR
ELEVATION IN THIS AREA TO BE 1' ABOVE THE ABFE DETERMINED
BY FEMA.

ZONE: AE IO
ABFE: 10'+1 CITY REQINT = 11'
PANEL: LA-NM41
DATE: JANUARY 18, 2006

NEW CONCRETE PARKING AREA:
INSTALL NEW 5" THICK, 4,000 PSI CONCRETE PARKING AND
SIDEWALK AS SHOWN. PROVIDE METAL KEYWAY JOINT SYSTEM
AS NEEDED. MAXIMUM SPACING: 12'-0"