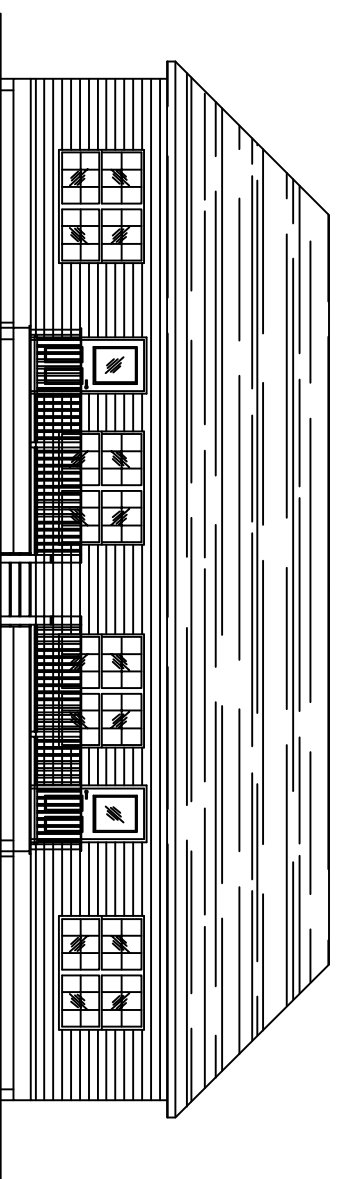


NEW APARTMENTS FOR CASEY CIVIL, LLC TERRACE AVENUE, LOT 2A SLIDELL, LOUISIANA 70458



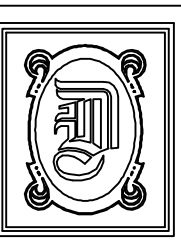
FRONT ELEVATION



VICINITY MAP
N.T.S.

DESIGN CRITERIA:
THE CONSTRUCTION FOR SAID RESIDENCE, WHERE BASIC WIND SPEED IS 130 MILES PER HOUR, WIND EXPOSURE ZONE C, IS DESIGNED IN ACCORDANCE WITH: AMERICAN FOREST AND PAPER ASSOCIATION (AF&PA) WOOD FRAME CONSTRUCTION MANUAL FOR ONE AND TWO FAMILY DWELLINGS (WFCDM) 2001 EDITION AS WELL AS THE INTERNATIONAL RESIDENTIAL CODE (IRC) 2009 EDITION

DRAWING INDEX	
-	COVER SHEET
C-1	SITE PLAN
S-1	PIILING & FRAMING PLAN
F-1	STRAPPING DETAILS
A-1	FLOOR PLAN
A-2	BUILDING SECTION, SCHEDULES, & NOTES
A-3	EXTERIOR ELEVATIONS
A-4	EXTERIOR ELEVATIONS
M-1	MECHANICAL PLAN & DETAILS
E-1	ELECTRICAL POWER PLAN & NOTES
E-2	ELECTRICAL LIGHTING PLAN & PANELS
P-1	PLUMBING PLAN & DETAILS



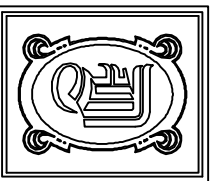
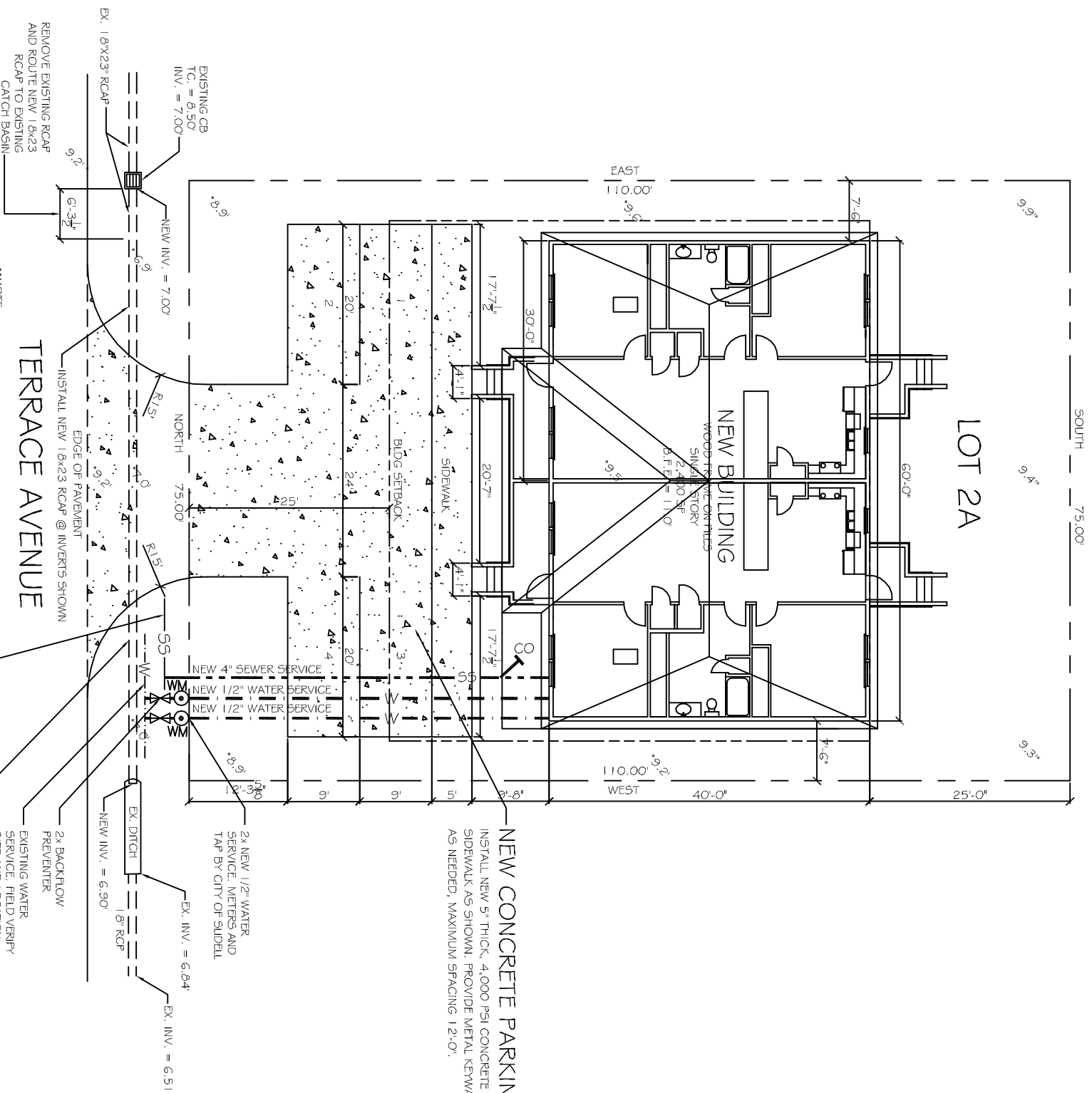
DAMMON ENGINEERING, INC.
554 OLD SPANISH TRAIL OFFICE: (985) 649-5832
SLIDELL, LA 70458 FAX: (985) 641-5950
WEBSITE: WWW.DAMMONENGINEERING.COM
EMAIL: DAMMONENG@BELLSOUTH.NET

DATE: 06-20-11
JOB NO.:

NEW APARTMENTS FOR
CASEY CIVIL, LLC
TERRACE AVENUE, LOT 2A
SLIDELL, LA 70458

SITE LEGEND

—	PROPERTY LINE
— · — · — · — · — · — · — · — · —	UTILITY / EASEMENT LINE
— · — · — · — · — · — · — · — · —	TRIANGULAR SITE LINE
— · — · — · — · — · — · — · — · —	BUILDING SETBACK MIN.
— · — · — · — · — · — · — · — · —	LANDSCAPING/BUFFER ZONE LIMITS



DAMMON
ENGINEERING, INC.

CHIEF ENGINEER
EMMETT
DAMMON, P. E.
CHIEF ARCHITECT
ROBERT
WILTSE

554 OLD SPANISH TRAIL
SUIDELL, LA. 70458
OFFICE: 985-649-5832
FAX: 985-641-1550

WEBSITE:
WWW.DAMMONENGINEERING.COM
EMAIL:
DAMMONENG@BELLSOUTH.NET

ARCHITECTURE
ENGINEERING
STUDIES
PLANNING
INVESTIGATION
EXPERT WITNESS

NEW
APARTMENTS

CASEY CIVIL, LLC
LOT 2A
TERRACE AVE
SUIDELL, LA

SITE
PLAN

REV:

SCALE: AS NOTED

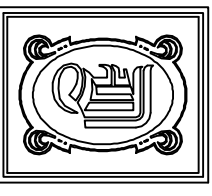
JOB#:

DATE: 06-16-11

SHEET 2

C-1

OF 12



DAMMON
ENGINEERING, INC.

CHIEF ENGINEER
EMMETT
DAMMON, P.E.
CHIEF ARCHITECT
ROBERT
WILTSE

554 OLD SPANISH TRAIL
SLIDELL, LA. 70458
OFFICE: 985-649-5832
FAX: 985-641-5950

WWW.DAMMONENGINEERING.COM
EMAIL:
DAMMONENG@BELLSOUTH.NET

ARCHITECTURE
ENGINEERING
STUDIES
PLANNING
INVESTIGATION
EXPERT WITNESS

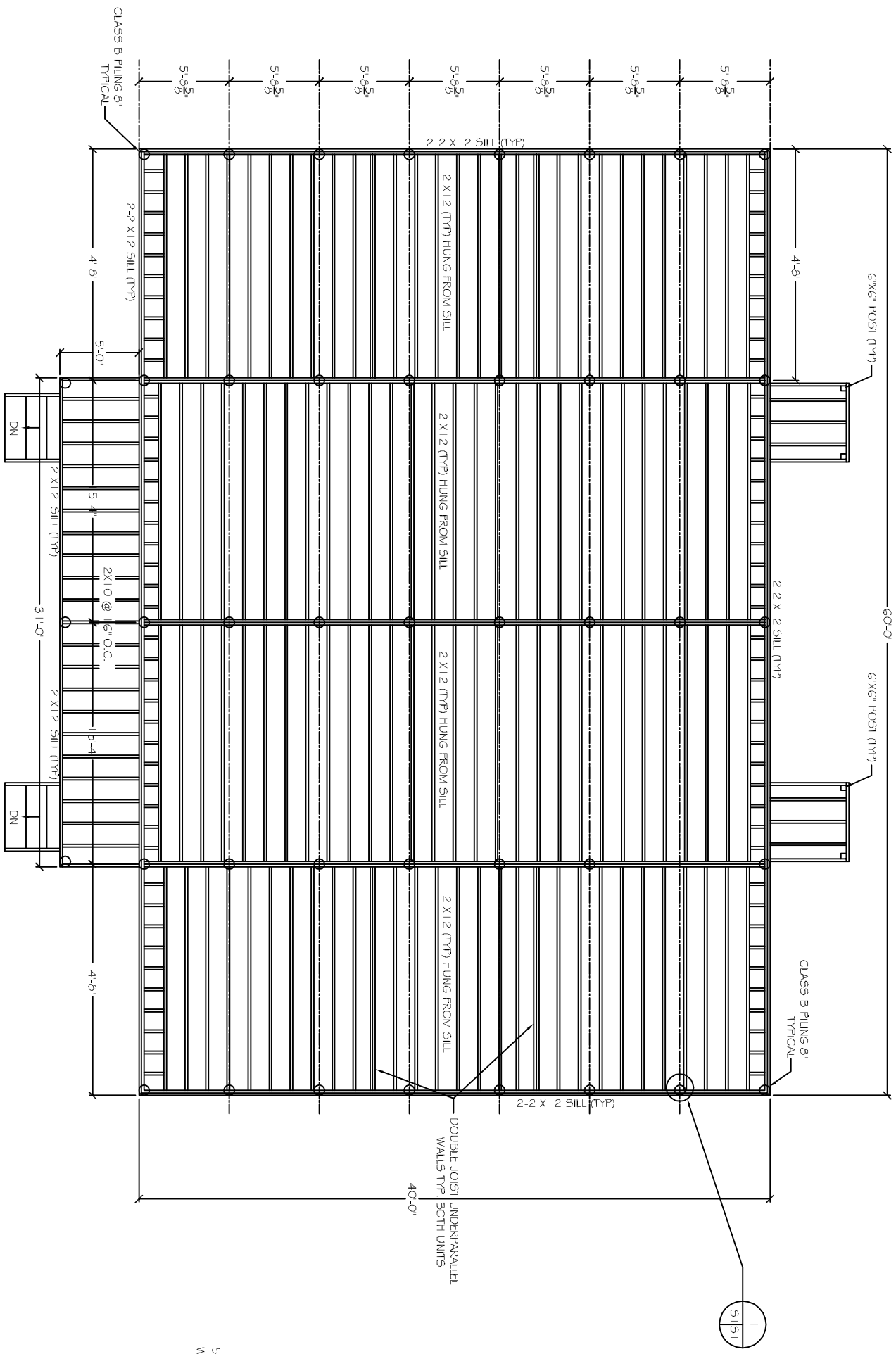
NEW
APARTMENTS

CASEY CIVIL, LLC
LOT 2A
TERRACE AVE.
SLIDELL, LA

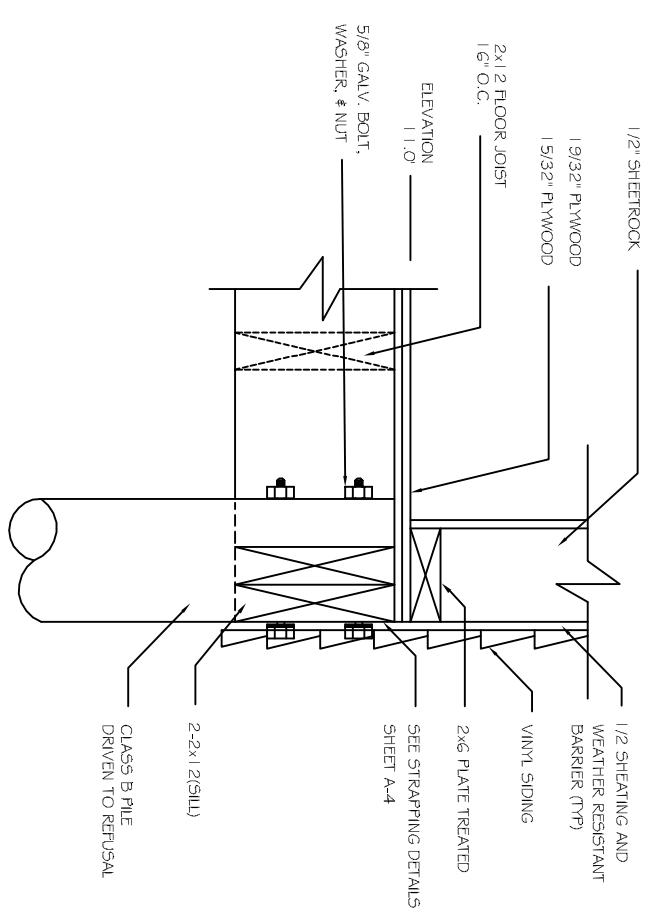
PILING
LAYOUT &
FLOOR
FRAMING PLAN

REV:	
SCALE:	AS NOTED
JOB#:	
DATE:	06-16-11
SHEET	3

OF 12
S-1



PILING/FLOOR FRAMING PLAN
SCALE: 1/4"=1'



DETAIL
N.T.S.





DAMMON
ENGINEERING, INC.

CHIEF ENGINEER
EMMETT
DAMMON, P.E.
CHIEF ARCHITECT
ROBERT
WILTSE

554 OLD SPANISH TRAIL
SUITE L, LA. 70458
OFFICE: 985-649-5032
FAX: 985-641-5950

WEBSITE:
WWW.DAMMONENGINEERING.COM
EMAIL:
DAMMONENG@BELLFLOWTH.NET

ARCHITECTURE
ENGINEERING
STUDIES
PLANNING
INVESTIGATION
EXPERT WITNESS

FLOOR
PLAN

CASEY CIVIL, LLC
LOT 2A
TERRACE AVE
SLIDELL, LA

REV:

SCALE: AS NOTED

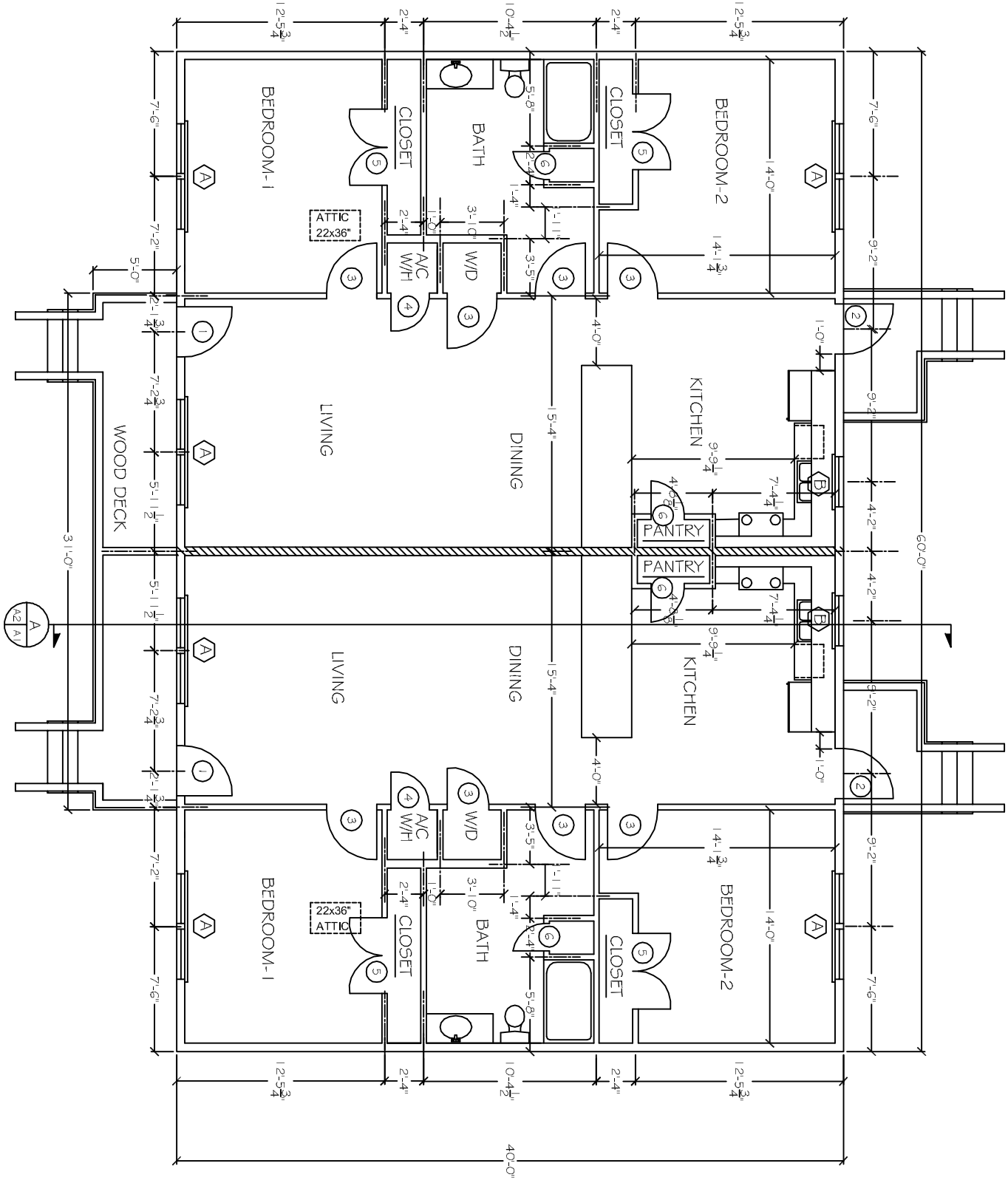
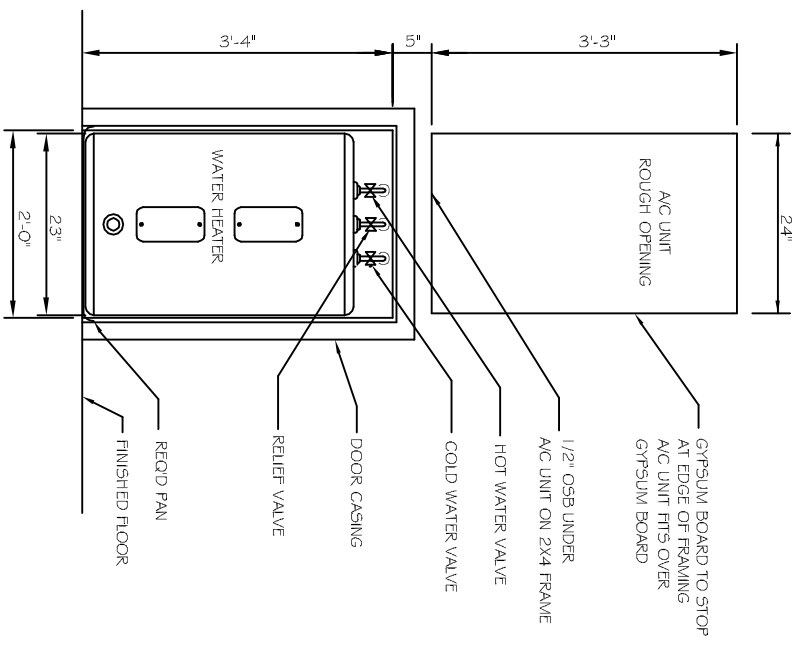
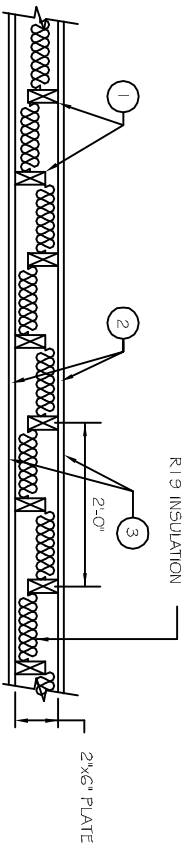
JOB#:

DATE: 06-15-11

SHEET 5

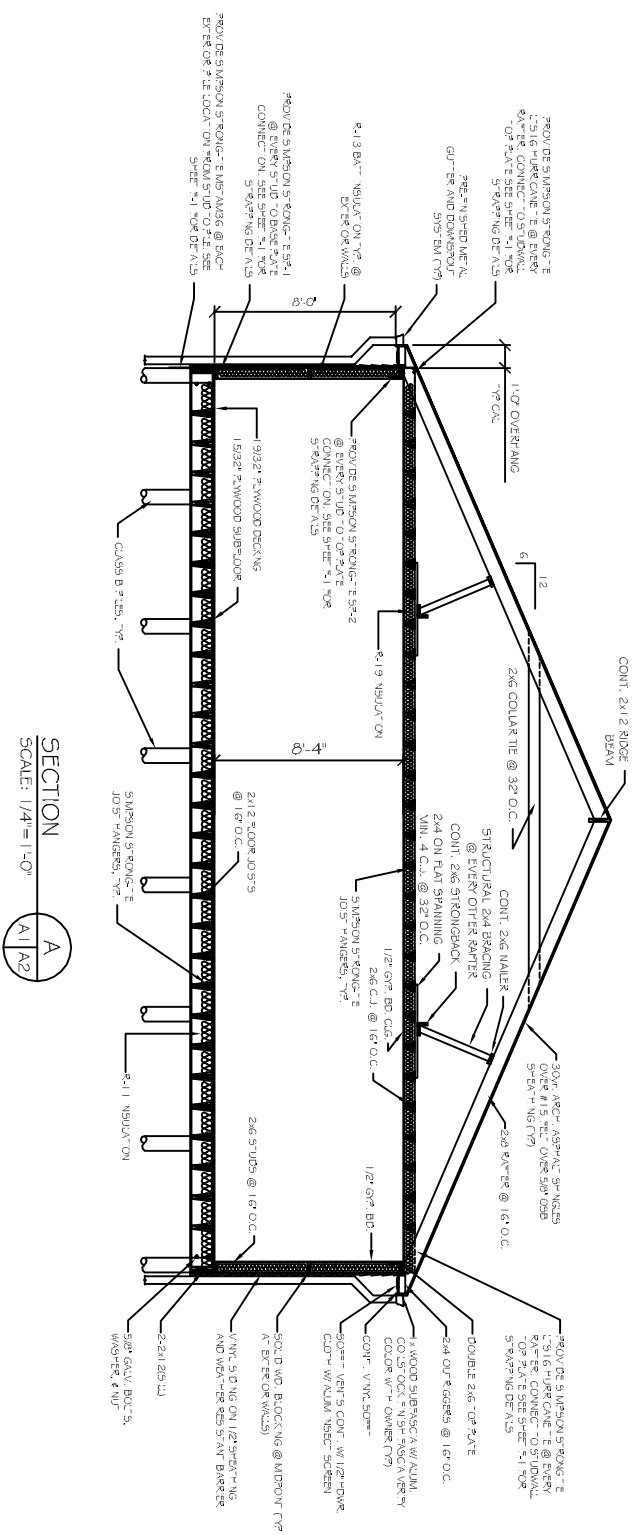
A-1

OF 12



GENERAL NOTES

- INSULATION AND INSULATION ASSEMBLIES SHALL MEET THE REQUIREMENTS OF SECTION 7.1.9.
 - CONCEALED INSULATION SHALL HAVE A FLAME SPREAD OF 0-25 AND SMOKE DEVELOPED INDEX OF 0-450. EXCEPT THAT IN COMBUSTIBLE WOOD FRAME CONSTRUCTION.
 - FACING SHALL COMPLY WITH IBC 2006.
 - THRESHOLDS SHALL BE NOT MORE THAN 1/2" IN HEIGHT AND SHALL BE BEVELLED IF MORE THAN 1/4".
 - DIMENSIONS ARE TO CENTERLINE, FACE OF STUDS, CENTER OF COLUMNS, OR FACE OF VENEER.
- CONTRACTOR TO VERIFY ALL SITE CONDITIONS, BUILDING LOCATIONS, AND DIMENSIONS PRIOR TO CONSTRUCTION.
- MATERIALS SHALL BE NEW AND U.L. LISTED.
- NO WORK SHALL BE CONCEALED UNTIL APPROVED BY LOCAL INSPECTORS.
- CONTRACTOR SHALL COMPLY WITH ALL PARISH, STATE, AND LOCAL CODES.
- CONTRACTOR TO GUARANTEE WORK FOR ONE YEAR.
- CONTRACTOR SHALL FURNISH WATER AND POWER FROM EXISTING SOURCES.
- EXTerior CAULKING SHALL BE DOW CORNING 790 SILICONE. INSTALL IN ACCORDANCE WITH MANUFACTURER RECOMMENDATION WITH ARCH/OWNER TO SELECT COLOR. INTERIOR CAULKING TO BE EQUAL TO DAP PAINTABLE LATEX WITH SILICONE.
- PAINT GRADE TO SHALL BE SHERWIN WILLIAMS OR EQUIVALENT. ALL WORK TO RECEIVE 3 COATS. COLOR SELECTION BY OWNER.
- PROVIDE CLEANUP ON A REGULAR BASIS. NO TRASH STORED IN BUILDING.
- ALL BATT INSULATION SHALL HAVE A CLASS "W" (0-25) FLAME SPREAD IN COMPLIANCE WITH APPLICABLE CODE.
- USE 6" STUDS, OR 4" STAGGERED STUDS AT ALL PLUMBING WALLS.
- PROVIDE GALVANIZED METAL PAN WITH DRAIN AT WATER HEATER LOCATION.
- ALL CORNERS SHALL BE PROPERLY BRACED FOR WIND LOADS. A 40" SHEATHING SHALL BE PROVIDED EVERY 20 FEET OF WALL LENGTH.
- FLOORING SHALL BE NON-SLIP.
- INTERIOR LOOKS ON DOORS IN MEANS OF EGRESS SHALL NOT REQUIRE THE USE OF A KEY, SPECIAL KNOWLEDGE, OR SPECIAL DEVICE TO OPEN IN THE DIRECTION OF EGRESS. ALL DOORS SHALL HAVE LEVER TYPE HANDLES.
- INTERIOR WALLS AND CEILING SHALL HAVE A FLAME SPREAD OF 0-200 AND A SMOKE DEVELOPMENT RATING OF 0-450.
- ALL WORK SHALL COMPLY WITH THE LATEST EDITION OF ALL LOCAL, STATE, AND NATIONAL CODES COVERING THE TYPE OF WORK BEING PERFORMED.
- PROVIDE PORTABLE FIRE EXTINGUISHERS IN ACCORDANCE WITH NFPA 10.1. SEE APPENDIX "E" OF NFPA 101 FOR DISTRIBUTION OF EXTINGUISHERS.
- ALL FIRE BARRIERS SHALL EXTEND TIGHT TO ROOF SHEATHING, AND BE SEALED WITH AN APPROVED FIRE CAULK.
- ALL ELECTRICAL, MECHANICAL, AND PLUMBING MATERIALS PENETRATING FIRE WALLS SHALL BE FIRE CAULKED. (PENETRATIONS THROUGH RATED CONSTRUCTION SHALL BE SEALED WITH A MATERIAL CAPABLE OF PREVENTING THE PASSAGE OF FLAMES AND HOT GASES WHEN TESTED IN ACCORDANCE WITH ASTM E-214.)
- SERVICE COUNTER SHALL HAVE A HCP ACCESSIBLE WRITING SURFACE. MAX. 36" FROM F.F. (ADAAG MANUAL 1996, PG 1135)



SECTION A
SCALE: 1/4" = 1'-0"

NAME	FLOOR	BASE	WALLS	CEILING	REMARKS
LIVING					
BREAKFAST					
KITCHEN					
BATHROOM					
BEDROOM					
DWNER TO SELECT STILE COLOR AND BRAND					
PROVIDE MOISTURE RESISTANT TYPE GYPS BOARD IN ALL DAMP AREAS INCLUDING BATHROOM. INTERIOR WALLS AND CEILING FINISHES SHALL BE CLASS C. FLAME SPREAD 0-200. SMOKE DEVELOPED 0-450.					

TYPE	FRAME	GLASS	TITES	ACCESSORIES	REMARKS
WINDOW					
A 4.0x5.0	FIXED	S. HUNG			
B 3.0x3.0		D. HUNG			
		HORIZ SLIDE			
		STEEL			
		ALUMINUM			
		WOOD			
		TINTED LOW E			
		PLAIN			
		TEMPERED			
		WIREGLASS			
		NONE			
		2/2			
		2/4			
		6/6			
		8/8			
		ARCHED TOP			
		ALARM			
		SCREEN			
		SHUTTER			
		NONE			

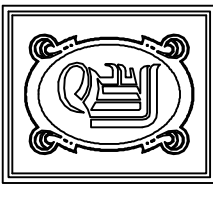
WINDOW SCHEDULE (X)

TYPE	FRAME	HINGE	LOCK	ACCESSORIES	REMARKS
DOOR - EXTERIOR					
1 3.0x6.6	SOLID WOOD				
2 3.0x6.6	HOLLOW METAL				
3 3.0x6.6	OVERHEAD				
DOOR - INTERIOR					
1 3.0x6.6	MASONITE				
2 3.0x6.6	CASED OPENING				
3 3.0x6.6	STEEL				
4 2.0x4.0	ALUMINUM				
5 2.0x6.6	WOOD				
6 2.0x6.6	CASED OPENING				
	DBL SWING				
	BUTT 1-1/2 PR				
	BURGLERPRF				
	FIXED				
	PASSAGE				
	PRIVACY				
	DEADBOLT				
	KEYED HANDLE				
	FUSH FULL				
	PANIC BAR				
	THRESHOLD				
	WEATHERSTRIP				
	DOOR STOP				
	ALARM				
	SILENCER				
	CLOSER				
					RATED FOR 130 MPH WIND
					RATED FOR 130 MPH WIND
					VENTED FOR AC

DOOR & HARDWARE SCHEDULE (X)

DOOR & HARDWARE NOTES:

- ALL GLAZING SHALL BE LAMINATED SAFETY GLASS.
- DOOR HINGES TO BE STANLEY FULL MORISE STANDARD WEIGHT. BALL BEARING HINGES. STAINLESS STEEL FINISH @ EXTERIOR & MATCHING FINISH ON STANDARD STEEL @ INTERIOR.
- PROVIDE LEVER HANDLE ADA APPROVED LOCKSETS WITH MATCHING STAINLESS STEEL FINISH, TO BE SELECTED BY OWNER.
- COORDINATE KENING SCHEDULE WITH OWNER.
- DOOR STOPS TO BE EQUAL TO IVES NO. 436 OR 437, AS REQUIRED IN WATCHING FINISH.
- WEATHER-STRIP & THRESHOLD FINISH TO COMPLEMENT OTHER HARDWARE.
- ALL EXTERIOR DOORS RATED FOR 130 MPH.



DAMMON ENGINEERING, INC.

CHIEF ENGINEER
ENMETT DAMMON, P.E.
CHIEF ARCHITECT
ROBERT WILTSE

554 OLD SPANISH TRAIL
SLIDELL, LA, 70458
OFFICE: 985-649-5832
FAX: 985-641-5950

WWW.DAMMONENGINEERING.COM
WEBSITE:
EMAIL:
DAMMONENG@BELLOUTH.NET

ARCHITECTURE
ENGINEERING
STUDIES
PLANNING
INVESTIGATION
EXPERT WITNESS

NEW APARTMENTS

CASEY CIVIL, LLC
LOT 2A
TERRACE AVE
SLIDELL, LA

BUILDING SECTION, NOTES, & SCHEDULES

REV:

SCALE: AS NOTED

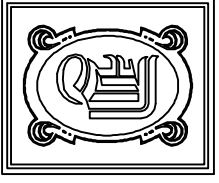
JOB#:

DATE: 06-08-11

SHEET 6

A-2

OF 12



DAMMON
ENGINEERING, INC.

CHIEF ENGINEER
EMMETT
DAMMON, P.E.
CHIEF ARCHITECT
ROBERT
WILTSE

554 OLD SPANISH TRAIL
SLIDELL, LA, 70458
OFFICE: 985-649-5832
FAX: 985-641-5950

WEBSITE:
WWW.DAMMONENGINEERING.COM
EMAIL:
DAMMONENG@BELL SOUTH.NET

ARCHITECTURE
ENGINEERING
STUDIES
PLANNING
INVESTIGATION
EXPERT WITNESS

NEW
APARTMENTS

CASEY CIVIL, LLC
LOT 2A
TERRACE AVE
SLIDELL, LA

EXTERIOR
ELEVATIONS

REV:

SCALE: AS NOTED

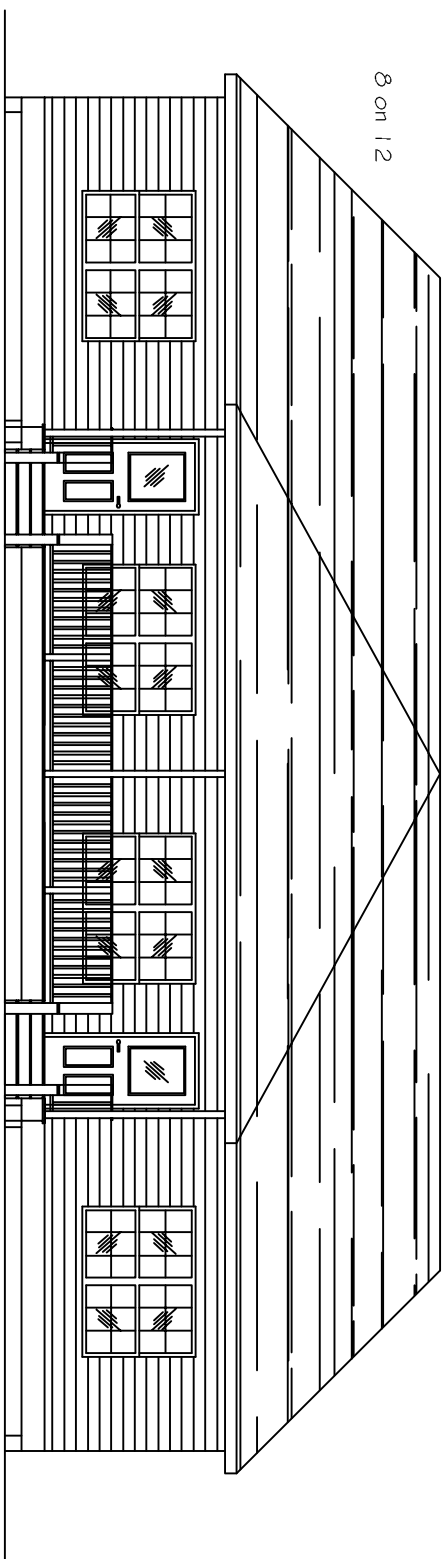
JOB#:

DATE: 06-15-11

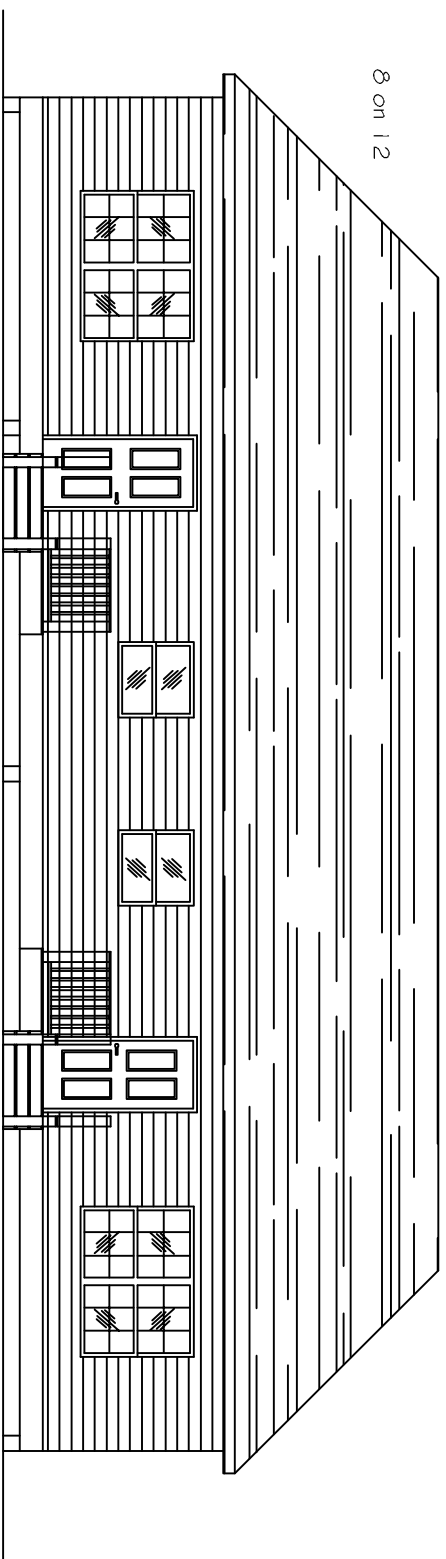
SHEET 7

A-3

OF 12



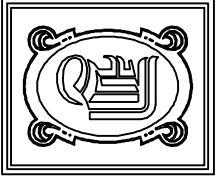
FRONT ELEVATION
SCALE: 1/4"=1'



REAR ELEVATION
SCALE: 1/4"=1'

8 on 12

8 on 12



DAMMON
ENGINEERING, INC.

CHIEF ENGINEER
EMMETT
DAMMON, P.E.
CHIEF ARCHITECT
ROBERT
WILTSE

554 OLD SPANISH TRAIL
SLIDELL, LA, 70458
OFFICE: 985-649-5832
FAX: 985-641-5950

WEBSITE:
WWW.DAMMONENGINEERING.COM

EMAIL:
DAMMONENG@BELLSOUTH.NET

ARCHITECTURE
ENGINEERING
STUDIES
PLANNING
INVESTIGATION
EXPERT WITNESS

NEW
APARTMENTS

CASEY CIVIL, LLC
LOT 2A
TERRACE AVE
SLIDELL, LA

EXTERIOR
ELEVATIONS

REV:

SCALE: AS NOTED

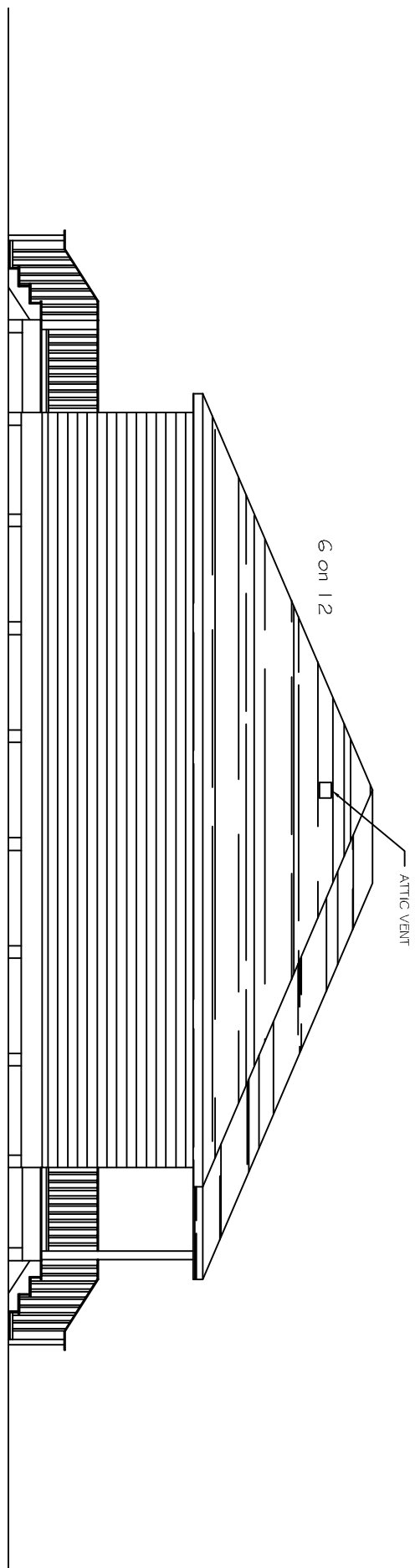
JOB#:

DATE: 06-15-11

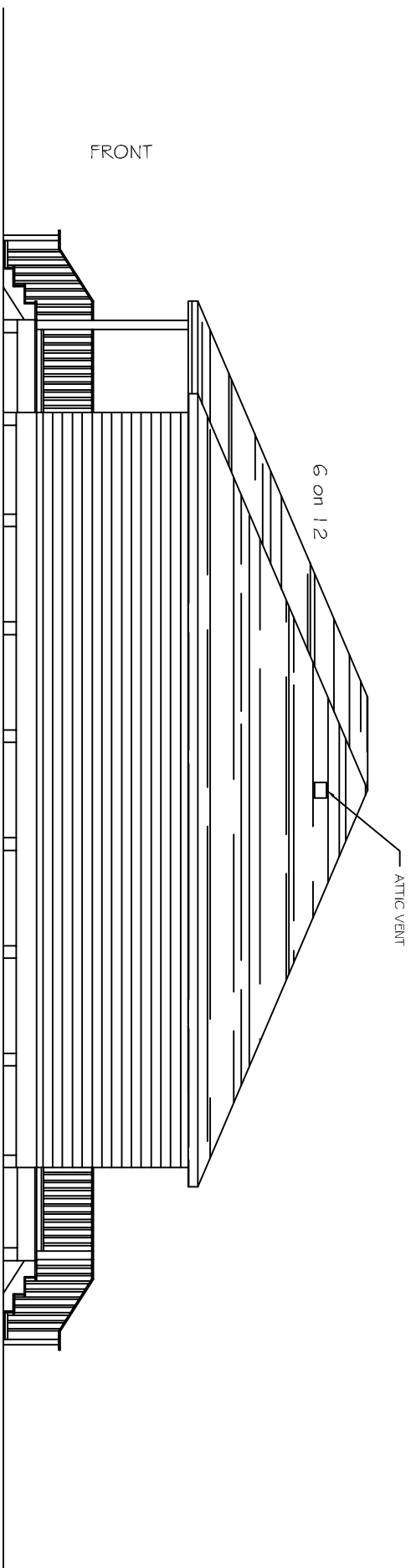
SHEET 8

A-4

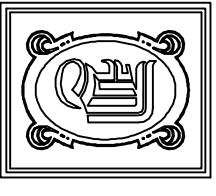
OF 12



LEFT ELEVATION
SCALE: 1/4"=1'



RIGHT ELEVATION
SCALE: 1/4"=1'



DAMMON
ENGINEERING, INC.

CHIEF ENGINEER
EMMETT
DAMMON, P.E.
CHIEF ARCHITECT
ROBERT
WILTSE

554 OLD SPANISH TRAIL
SLIDELL, LA. 70456
OFFICE: 965-649-5632
FAX: 965-641-5950

WEBSITE:
WWW.DAMMONENGINEERING.COM
E-MAIL:
DAMMONENG@BELLSouth.NET

ARCHITECTURE
ENGINEERING
STUDIES
PLANNING
INVESTIGATION
EXPERT WITNESS

NEW
APARTMENTS

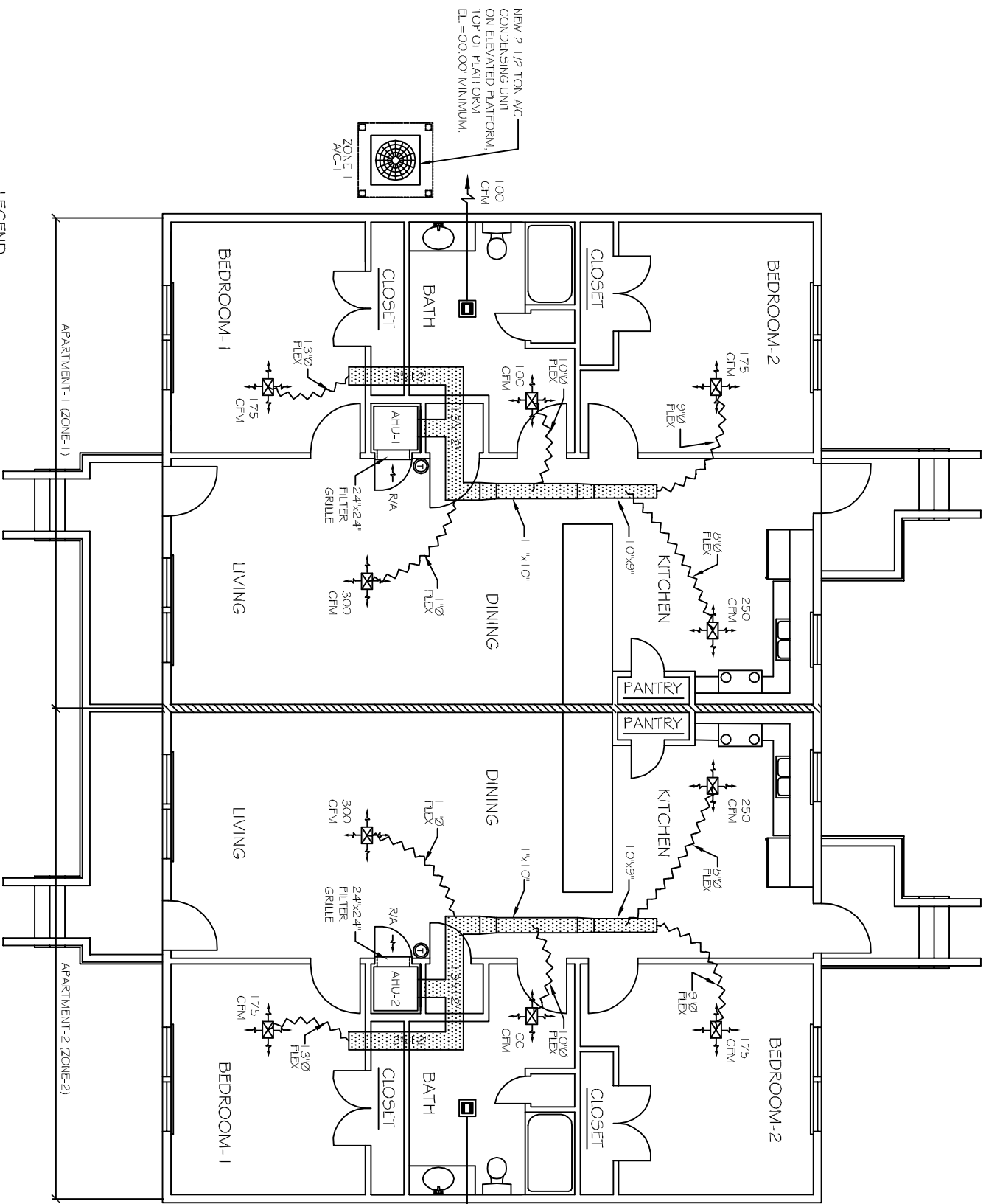
CASEY CIVIL, LLC
LOT 2A
TERRACE AVE
SLIDELL, LA

MECHANICAL
PLAN

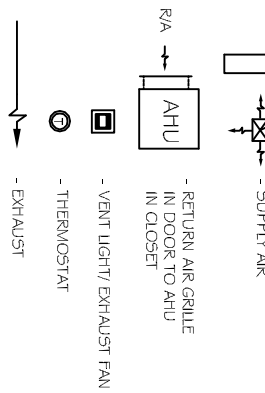
REV:	SCALE: AS NOTED
JOB#:	DATE: 06-15-11
SHEET 9	
M-1	
OF 12	

HVAC NOTES

1. CONCEALED DUCTWORK TO BE UL-181, CLASS 1, FIBERGLASS DUCTBOARD. DUCTS SHALL BE SIZED TO LIMIT MAIN DUCTS TO 1,000 CFM & SECONDARY DUCTS TO 600 CFM. TO BE INSTALLED PER SMACNA STANDARDS.
2. EXPOSED DUCTWORK TO BE GALVANIZED SHEET METAL PER SMACNA STANDARDS. LINE WITH NEOPRENE COATED 1.0" x 1.5" POUNDS PER CUBIC FOOT DUCT INSULATION.
3. ROUND FLEXIBLE DUCT TO BE UL-181, CLASS 1, AIR DUCT MATERIALS.
4. DUCT SIZES SHOWN ARE CLEAR INSIDE DIMENSIONS.
5. IN ALL SYSTEMS OVER 2000 CFM AND LESS THAN 15,000 CFM, SMOKE DETECTORS SHALL BE INSTALLED IN ACCORDANCE WITH NFPA 72E IN THE RETURN DUCT DOWNSTREAM OF THE AIR HANDLING UNIT AND ALL FILTERS TO AUTOMATICALLY STOP THE FAN. PROVIDE U.L. LISTED 125°F FIRESTAT IN RETURN AIR OF EACH SYSTEM UNDER 2000 CFM TO SHUT DOWN THE FAN IN THE EVENT OF FIRE.
7. PROVIDE U.L. RATED FIRE DAMPERS WHERE REQUIRED AT ALL DUCT PENETRATIONS OF FIRE-RATED ASSEMBLIES AND WHERE REQUIRED BY CODE, INCLUDING OUTSIDE AIR INTAKES. CONDENSATE DRAINS TO BE PVC PIPE RUN TO PLUMBERS P-TRAP WITHIN FIVE FEET OF AIR HANDLING UNITS.
9. ALL AIR HANDLING SYSTEMS TO BE BALANCED TO ASSURE PROPER AIR FLOWS PER PLANS.
10. ALL THERMOSTATS TO BE AUTOMATIC CHANGEOVER WITH HEAT SWITCH.
11. EXHAUST FAN EQUAL TO BROAN MODEL NO. 100 CF OR EQUAL. FAN SHALL BE CONTROLLED BY A SWITCH ON THE WALL IN THE SAME LOCATION AS LIGHT SWITCH(S). PROVIDE BACK DRAFT DAMPER.
12. PROVIDE AND INSTALL WATER PROOF GRILLE VENT IN PROPER ROOF LOCATION FOR PLUMBING FIXTURE EXHAUST.
13. ALL SUPPLY AIR VENTS SHALL BE EQUIPPED WITH AIR CONTROL DAMPERS.
14. LOCATE OUTDOOR UNITS AS SHOWN ON ARCH. DWGS.
15. REFRIGERANT LINES SHALL BE SIZED BY UNIT MANUFACTURER AND INSTALLED ACCORDING TO MANUFACTURERS' INSTRUCTIONS.
16. FRESH AIR SHALL BE SUPPLIED TO EACH AIR HANDLER THROUGH EXTERIOR WALL DUCT SUPPLIED WITH A CONTROL DAMPER.
17. INSTALL FIRE DAMPER WHERE S.A. & R.A. DUCTS PENETRATE 1 HOUR RATED CEILING.
18. ALL ELECTRICAL, MECHANICAL, AND PLUMBING PENETRATING FIRE WALLS SHALL BE FIRE CAULKED. (PENETRATIONS THROUGH RATED CONSTRUCTION SHALL BE SEALED WITH A MATERIAL CAPABLE OF PREVENTING THE PASSAGE OF FLAMES AND HOT GASES WHEN TESTED IN ACCORDANCE WITH ASTM-E9-14).
19. ALL MECHANICAL SYMBOLS ARE DRAWN DIAGRAMMATICALLY. CONTRACTOR TO VERIFY WITH OWNER LOCATIONS OF VENTS, DAMPERS, REGISTERS, ETC.
20. REFER TO STRUCTURAL DRAWINGS TO COORDINATE LOCATION(S) & MOUNTING OF MECHANICAL EQUIPMENT.
21. FLEXIBLE DUCTWORK LENGTH NOT TO EXCEED 10'-0".
22. REFER TO REFLECTED CEILING PLAN FOR FINAL GRILLE AND DIFFUSER LOCATIONS AND COORDINATE AS REQUIRED.
23. FINAL LOCATION OF TEMPERATURE CONTROLS TO BE COORDINATED WITH OWNER AT JOB SITE.
24. PROVIDE AND INSTALL SMOKE DETECTORS AS APPROVED BY LOCAL AHJ'S. PLACE NEAR R/A AND S/A OPENINGS OF AHU AND PROVIDE, WITH ACCESS PANEL, WIRING BY ELECTRICAL CONTRACTOR.
25. FRESH AIR INTAKES ARE REQUIRED TO HAVE MOTORIZED OR GRAVITY DAMPERS TO SHUT OFF WHEN SYSTEM IS NOT RUNNING. ALL THERMOSTATS MUST BE PROGRAMMABLE. SEE SECTIONS 502.4.4 OR 503.2.4.3 OF THE 2006 INTERNATIONAL ENERGY CODE.



LEGEND



MECHANICAL PLAN
SCALE: 1/4"=1'

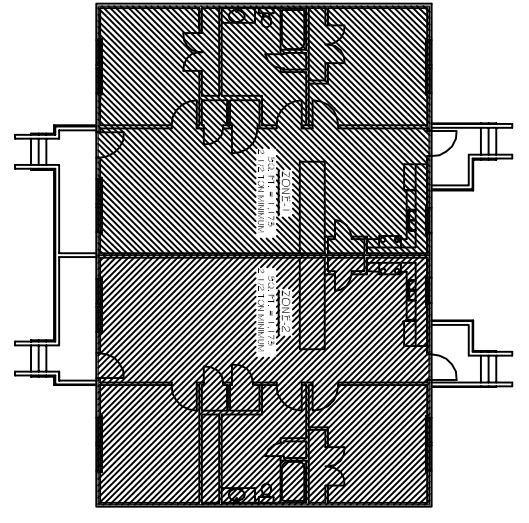


EXHAUST FAN SCHEDULE

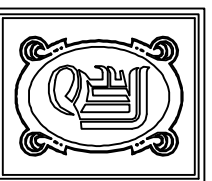
LOC	CFM	VOLTAGE	TYPE	MANF.
TOILETS	100	120V	VENTILGRT	BROAN

A/C UNIT SCHEDULE

NO.	TOTAL BTU	CFM	HEAT ELEC.	VOLTAGE	ELECTRICAL	COMMENTS
1	30,000	1,000	1.0 KW	120V, 1Ø	UP-1, 2, 3, 4	REQUIRED (VERIFY WITH OWNER)
2	30,000	1,000	1.0 KW	120V, 1Ø	UP-2, 1, 2, 3, 4	



KEY PLAN
N.T.S.



DAMMON
ENGINEERING, INC.

CHIEF ENGINEER
EMMETT
DAMMON, P.E.
CHIEF ARCHITECT
ROBERT
WILTSE

554 OLD SPANISH TRAIL
SLIDELL, LA. 70446
OFFICE: 985-649-5632
FAX: 985-641-5950

WEBSITE:
WWW.DAMMONENGINEERING.COM
EMAIL:
DAMMONENG@BELLSPRINT.NET

ARCHITECTURE
ENGINEERING
STUDIES
PLANNING
INVESTIGATION
EXPERT WITNESSES

NEW
APARTMENTS

CASEY CIVIL, LLC
LOT 2A
TERRACE AVE
SLIDELL, LA

POWER
PLAN

REV:

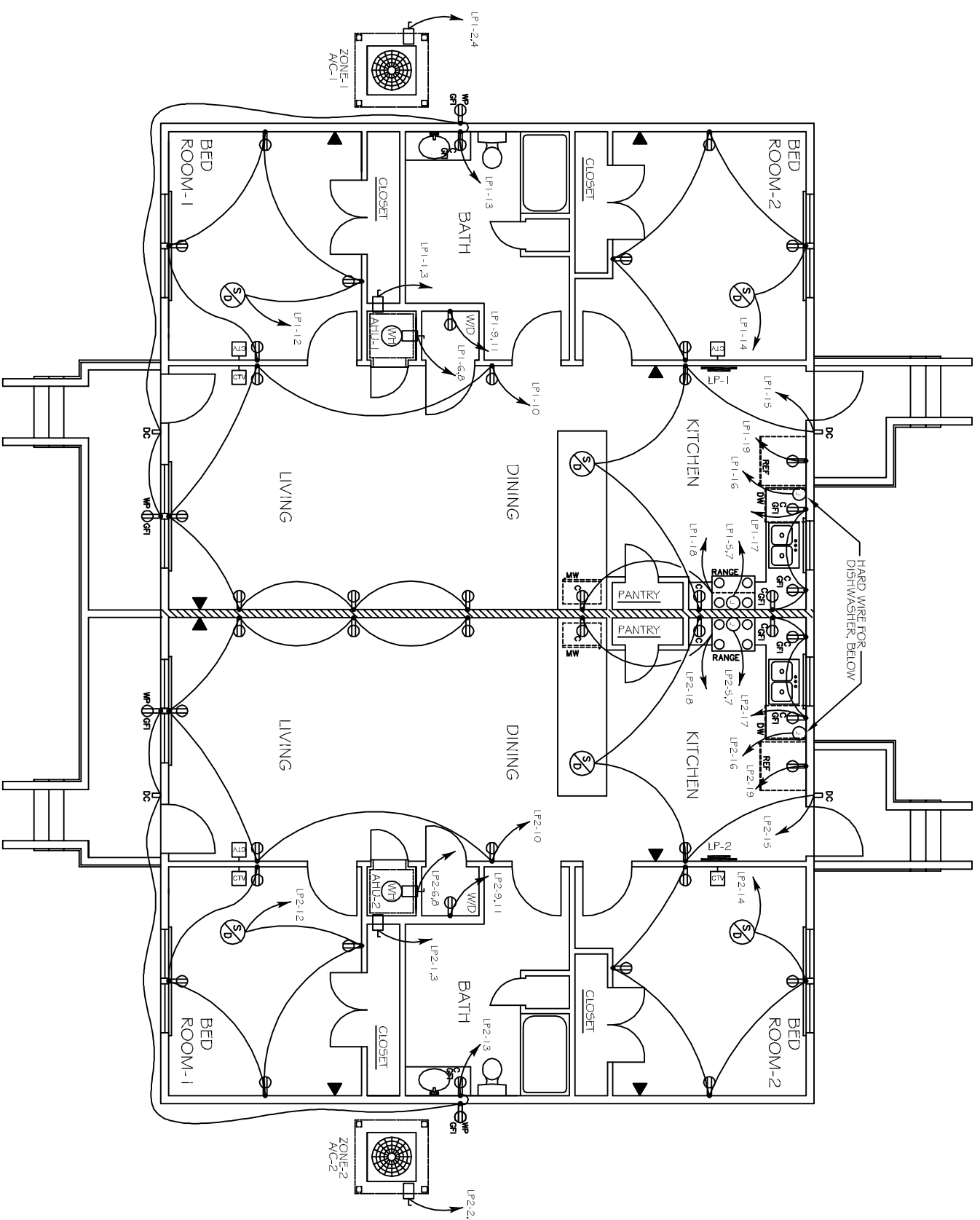
SCALE: AS NOTED

JOB#:

DATE: 06-16-11

SHEET 10

E-1

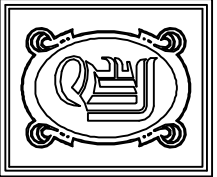


POWER PLAN
SCALE: 1/4"=1'

- LEGEND**
- RECEPTACLE 20A 115V
 - RECEPTACLE COUNTER HEIGHT 20A
 - GFI RECEPTACLE 20A
 - WEATHER PROOF GFI RECEPTACLE 20A
 - GFI RECEPTACLE COUNTER HEIGHT 20A
 - TELEPHONE
 - CABLE TELEVISION
 - DISCONNECT
 - POWER PANEL
 - SWITCH
 - 3 WAY SWITCH
 - JUNCTION BOX
 - DOOR CHIMES
 - SMOKE DETECTOR

ELECTRICAL NOTES

1. ALL WORK SHALL CONFORM TO THE LATEST EDITION OF THE NATIONAL ELECTRICAL CODE, THE GOVERNING ELECTRICAL CODE AND ALL OTHER INSPECTION DEPARTMENT'S HAVING JURISDICTION. OBTAIN CERTIFICATES OR APPROVAL WHERE REQUIRED.
2. ALL MATERIALS FURNISHED SHALL BE NEW AND SHALL BE U.L. LISTED.
3. THE DRAWINGS INDICATE SIZE AND GENERAL LOCATION OF WORK. SCALE DIMENSIONS SHALL NOT BE USED. THE EXACT LOCATION AND LOCATION OF ALL LIGHTING FIXTURES, RECEPTACLES AND TELEPHONE OUTLETS, ETC. SHALL BE DETERMINED BY ACTUAL CONDITIONS IN THE FIELD.
4. PRIOR TO BIDDING, CONTRACTOR SHALL VISIT THE JOB SITE AND FAMILIARIZE THEMSELVES WITH THE EXISTING CONDITIONS.
5. ELECTRICAL CONTRACTOR SHALL COORDINATE HIS WORK WITH OTHER TRADES AND WITH OTHER CONTRACTORS WHOSE WORK MAY AFFECT THIS INSTALLATION.
6. ELECTRICAL CONTRACTOR SHALL COORDINATE INCOMING ELECTRICAL SERVICE WITH UTILITY COMPANY AND INCLUDE IN HIS BID ALL CHARGES AND FEES INCURRED IN MODIFICATIONS.
7. WHERE MORE THAN ONE SWITCH OCCURS IN THE SAME LOCATION, THEY SHALL BE INSTALLED IN A GANG TYPE BOX UNDER ONE COVER PLATE.
8. ELECTRICAL CONTRACTOR SHALL COORDINATE THE TELEPHONE INSTALLATION WITH THE TELEPHONE COMPANY AND THE GENERAL CONTRACTOR.
9. ELECTRICAL CONTRACTOR, BEFORE INSTALLING ANY OF THE WORK, SHALL SEE THAT IT DOES NOT INTERFERE WITH CLEARANCES REQUIRED FOR FINISHED COLUMNS, HUNG CEILINGS, PLASTER, PARTITIONS, WALLS, ETC. AS SHOWN IN THE ARCHITECTURAL DRAWINGS AND DETAILS. IF ANY WORK IS INSTALLED AND IT LATER DEVELOPS THAT SUCH DETAILS OR DESIGN CANNOT BE FOLLOWED, THE CONTRACTOR, AT HIS OWN EXPENSE, SHALL MAKE SUCH CHANGES IN THE WORK AS DIRECTED BY THE ARCHITECT, AS WELL AS TO PERMIT THE INSTALLATION OF THE ARCHITECTURAL WORK AS SHOWN ON THE PLANS AND DETAILS.
10. PERFORM TEST REQUIRED BY THE OWNER OR THE ENGINEER IN CONNECTION WITH THE OPERATION OF THE ELECTRICAL SYSTEM IN THE BUILDING.
11. ALL TESTS SHALL BE MADE IN ACCORDANCE WITH THE LATEST STANDARD OF THE IEEE AND THE NATIONAL ELECTRICAL CODE.
12. MINIMUM CONDUCTOR SIZE SHALL BE #12. GOOD INSULATION. MINIMUM SIZE CONDUIT SHALL BE 3/4" EMT FOR INTERIOR USE, AND 3/4" RIGID ALUMINUM FOR EXTERIOR USE. USE TYPE NMC CABLE COPPER, FOR LIGHTS AND RECEPTACLE CIRCUITS. EXTERIOR FITTINGS SHALL BE CAST BOXES AND COVERS. INTERIOR FITTINGS SHALL BE CAST WHERE EXPOSED ON WALLS. STAMPED BOXES MAY BE USED ABOVE CEILINGS IN AIR CONDITIONED SPACES, WHERE LAY IN FIXTURES ARE IN USE. USE 1/4" 2 ALLOWED FOR 6" WIDTH.
13. CONTRACTOR SHALL INSTALL WIRING AND OTHER CIRCUIT COMPONENTS TO MATCH EQUIPMENT ACTUALLY INSTALLED.
14. INSTALL GROUND FAULT RECEPTACLES AT RECEPTACLE LOCATIONS WITHIN 5' OF SINKS OR LAVATORIES, AND AT EXTERIOR LOCATIONS. EXTERIOR RECEPTACLES SHALL ALSO BE WATERPROOF.
15. BONDING AND GROUNDING SHALL BE IN ACCORDANCE WITH NFPA 70:230-63, NFPA 250-23, 250-71 & 250-72.
16. GROUND NEUTRAL IN ACCORDANCE WITH NFPA 70:2250-23B.
17. FUSES SHALL BE 11T CLASS KS, 250 VOLT, 200,000 AMP INTERRUPTING CAP.
18. PROVIDE SERVICES OF A FIRE-SMOKE DETECTION AND ALARM COMPANY TO DESIGN AND INSTALL ALARM SYSTEM TO MEET REQUIREMENTS OF THE STATE FIRE MARSHAL.
19. EXTERIOR LIGHTING SHALL BE SHADED OR INWARDLY DIRECTED IN SUCH A MANNER SO THAT NO DIRECT LIGHTING OR GLARE IS CAST BEYOND THE PROPERTY LINE. THE INTENSITY OF SUCH LIGHTING SHALL NOT EXCEED ONE FOOT CANDLE AS MEASURED AT THE ABUTTING PROPERTY LINE.
20. ALL ELECTRICAL MECHANICAL AND PLUMBING PENETRATING FIRE PARTITIONS SHALL BE FIRE CAULKED, PENETRATIONS THROUGH RATED CONSTRUCTION SHALL BE SEALED WITH A MATERIAL CAPABLE OF PREVENTING THE PASSAGE OF FLAMES AND HOT GASES WHEN TESTED IN ACCORDANCE WITH ASTM-E814.)



DAMMON ENGINEERING, INC.
 CHIEF ENGINEER
 EMMETT DAMMON, P.E.
 CHIEF ARCHITECT
 ROBERT WILTSE

554 OLD SPANISH TRAIL
 SUITE LL, LA 70458
 OFFICE: 985-649-5832
 FAX: 985-641-5950

WWW.DAMMONENGINEERING.COM
 EMAIL: DAMMONENG@BELLFLOWTH.NET

ARCHITECTURE
 ENGINEERING
 PLANNING
 INVESTIGATION
 EXPERT WITNESSES

NEW APARTMENTS
 CASEY CIVIL, LLC
 LOT 2A
 TERRACE AVE
 SLIDELL, LA

LIGHTING PLAN

REV:

SCALE: AS NOTED

JOB#:

DATE: 06-16-11

SHEET 11

E-2

OF 12

PANEL: LP-1
 LOCATION: KITCHEN WALL IN APARTMENT 1
 FEEDER SOURCE: NEAREST SERVICE ENTRANCE

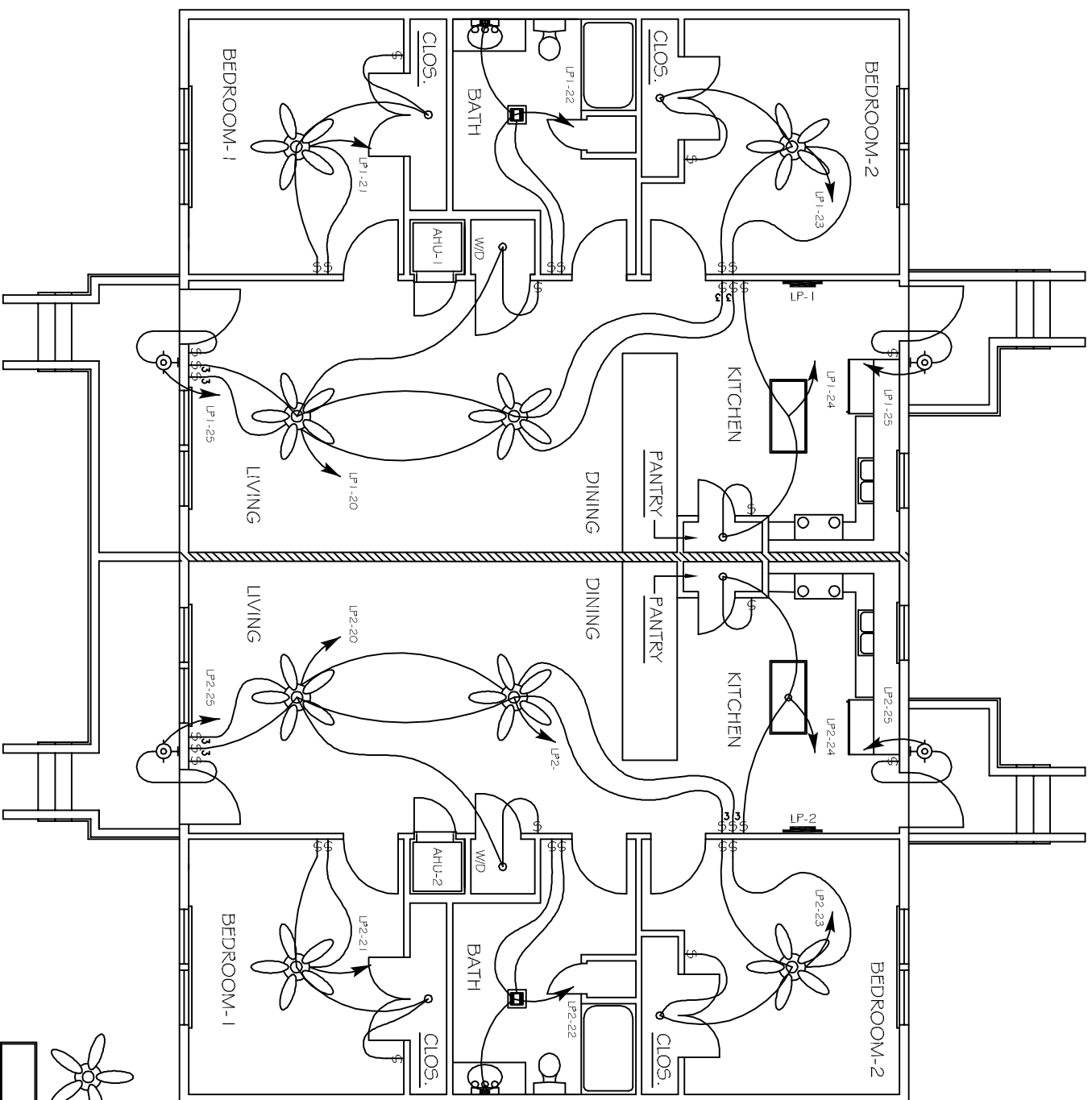
VOLTAGE: 240/120V, 150A, 1Ø, 3W
 1 25A MAIN BREAKER, 1 25A MAIN BUS
 ENCLOSURE: FLUSH MOUNTED W/ EQUIPMENT GND BAR
 SQUARE D TYPE OO LOAD CENTER

OUT. NO.	TRAILER SIZE	LOAD DESCRIPTION	BREAKER AMP	FUSE	LOAD (VA)	LOAD (W)	BREAKER FUSE	LOAD DESCRIPTION	TRAILER SIZE	OUT. NO.	
1	#6	HEATER/DRYER UNIT (RH)	45	2	5000	3600	30	AIR COMPRESSOR UNIT	#10	2	
3	#6	1Ø RV	5000		5000	5000	2	2 1/2 TON	#10	4	
5	#6	RANGE	40	2	4800	2250	30	WATER HEATER (40 GAL)	#10	6	
7	#6	WASHER/DRYER COILS	40	2	2930	920	20	LIVING + DINING RECEPTACLES	#12	10	
9	#10	WASHER/DRYER COILS	30	2	2930	920	1	BEDROOM 1 RECEPTACLES + SMOKE DETECTOR, ALC, VENT	#12	12	
11	#10	BEDROOM 1 GROUND 7W W/ LIGHT	20	1	2930	920	1	BEDROOM 2 RECEPTACLES + SMOKE DETECTOR, ALC, VENT	#12	14	
13	#12	BEDROOM 1 GROUND 7W W/ LIGHT	20	1	490	600	1	DISHWASHER	#12	16	
15	#12	BEDROOM 2 GROUND 7W W/ LIGHT	20	1	1800	500	1	LONG RECEPTACLES + SMOKE DETECTOR, ALC, VENT	#12	18	
17	#12	BEDROOM 1 GROUND 7W W/ LIGHT	20	1	300	500	1	BATHS W/ LIGHTS, W/ GLOBE LIGHT	#12	20	
19	#12	BEDROOM 2 GROUND 7W W/ LIGHT	20	1	300	500	1	BEDROOM VENT AND LIGHTS	#12	22	
21	#12	AND GLOBE LIGHT	20	1	200	200	1	KITCHEN AND HALLWAY LIGHTS	#12	24	
23	#12	AND GLOBE LIGHT	20	1	200	200	1	SPARE	#12	26	
25	#12	EXTERIOR LIGHTS AT DOORS	20	1	200	200	1	SPARE	#12	28	
27	#12	EXTERIOR LIGHTS AT DOORS	20	1	200	200	1	SPARE	#12	30	
29	#12	EXTERIOR LIGHTS AT DOORS	20	1	200	200	1	SPARE	#12	30	
					TOTAL CONNECTED LOAD (VA)=46,330						
					482-23.91Ø						
					862-23.12Ø						

PANEL: LP-2
 LOCATION: KITCHEN WALL IN APARTMENT 2
 FEEDER SOURCE: NEAREST SERVICE ENTRANCE

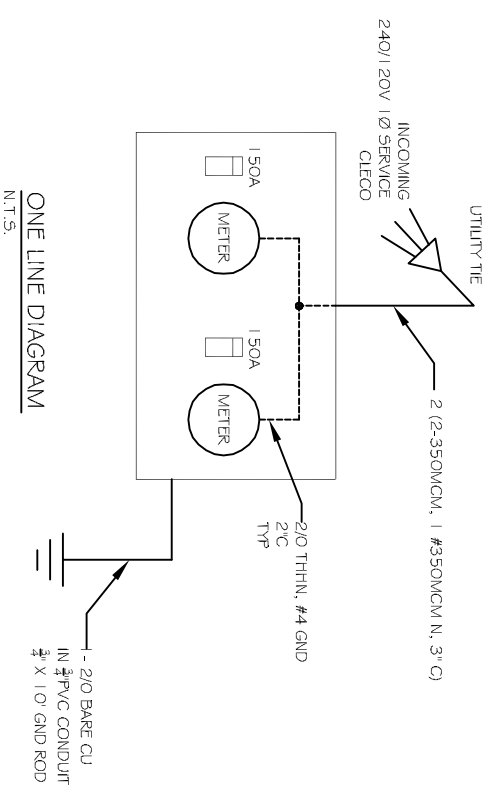
VOLTAGE: 240/120V, 150A, 1Ø, 3W
 1 25A MAIN BREAKER, 1 25A MAIN BUS
 ENCLOSURE: FLUSH MOUNTED W/ EQUIPMENT GND BAR
 SQUARE D TYPE OO LOAD CENTER

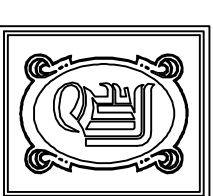
OUT. NO.	TRAILER SIZE	LOAD DESCRIPTION	BREAKER AMP	FUSE	LOAD (VA)	LOAD (W)	BREAKER FUSE	LOAD DESCRIPTION	TRAILER SIZE	OUT. NO.	
1	#6	HEATER/DRYER UNIT (RH)	45	2	5000	3600	30	AIR COMPRESSOR UNIT	#10	2	
3	#6	1Ø RV	5000		5000	5000	2	2 1/2 TON	#10	4	
5	#6	RANGE	40	2	4800	2250	30	WATER HEATER (40 GAL)	#10	6	
7	#6	WASHER/DRYER COILS	40	2	4800	2250	2	LIVING + DINING RECEPTACLES	#12	10	
9	#10	WASHER/DRYER COILS	30	2	2930	920	1	BEDROOM 1 RECEPTACLES + SMOKE DETECTOR, ALC, VENT	#12	12	
11	#10	BEDROOM 1 GROUND 7W W/ LIGHT	20	1	2930	920	1	BEDROOM 2 RECEPTACLES + SMOKE DETECTOR, ALC, VENT	#12	14	
13	#12	BEDROOM 1 GROUND 7W W/ LIGHT	20	1	490	600	1	DISHWASHER	#12	16	
15	#12	BEDROOM 2 GROUND 7W W/ LIGHT	20	1	1800	500	1	LONG RECEPTACLES + SMOKE DETECTOR, ALC, VENT	#12	18	
17	#12	BEDROOM 1 GROUND 7W W/ LIGHT	20	1	300	500	1	BATHS W/ LIGHTS, W/ GLOBE LIGHT	#12	20	
19	#12	BEDROOM 2 GROUND 7W W/ LIGHT	20	1	300	500	1	BEDROOM VENT AND LIGHTS	#12	22	
21	#12	AND GLOBE LIGHT	20	1	200	200	1	KITCHEN AND HALLWAY LIGHTS	#12	24	
23	#12	AND GLOBE LIGHT	20	1	200	200	1	SPARE	#12	26	
25	#12	EXTERIOR LIGHTS AT DOORS	20	1	200	200	1	SPARE	#12	28	
27	#12	EXTERIOR LIGHTS AT DOORS	20	1	200	200	1	SPARE	#12	30	
29	#12	EXTERIOR LIGHTS AT DOORS	20	1	200	200	1	SPARE	#12	30	
					TOTAL CONNECTED LOAD (VA)=46,330						
					482-23.91Ø						
					862-23.12Ø						



LIGHTING PLAN
 SCALE: 1/4"=1'

- LEGEND**
- CEILING FAN WITH LIGHT FIXTURE
 - 2x4' CEILING MOUNTED FLUORESCENT LIGHT
 - 1'x4' CEILING MOUNTED FLUORESCENT LIGHT
 - 3 BULB HOLLYWOOD LIGHT FIXTURE
 - VENT LIGHT WITH EXHAUST FAN
 - SINGLE BULB CEILING MOUNTED FIXTURE
 - SURFACE MOUNTED EXTERIOR LIGHT FIXTURE
 - SWITCH
 - 3-WAY SWITCH
 - POWER PANEL





DAMMON ENGINEERING, INC.

CHIEF ENGINEER
EMMETT DAMMON, P.E.
CHIEF ARCHITECT
ROBERT WILTSE

554 OLD SPANISH TRAIL
SLIDELL, LA. 70458
OFFICE: 985-649-5832
FAX: 985-641-5950

WWW.DAMMONENGINEERING.COM
WE991TE
E-MAIL:
DAMMONENG@BELLSOUTH.NET

ARCHITECTURE
ENGINEERING
STUDIES
PLANNING
INVESTIGATION
EXPERT WITNESS

NEW APARTMENTS

CASEY CIVIL, LLC
LOT 2A
TERRACE AVE
SLIDELL, LA

PLUMBING PLAN

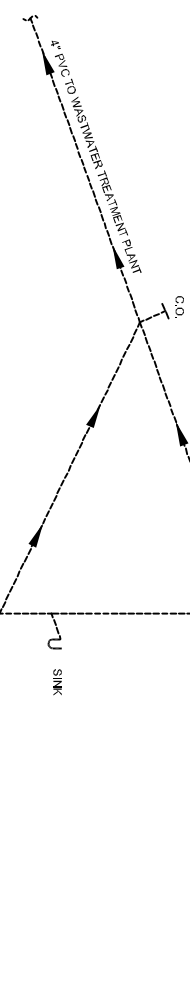
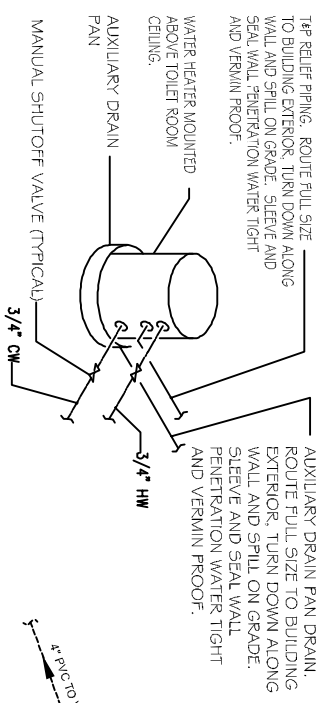
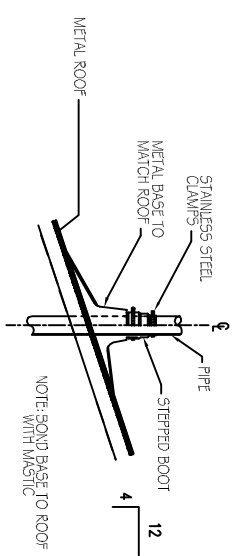
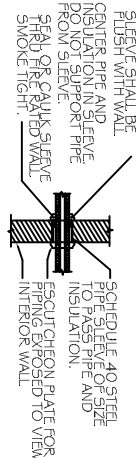
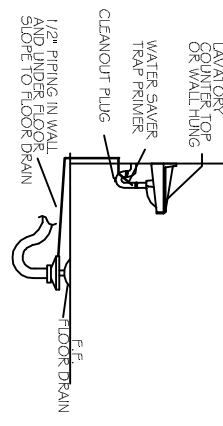
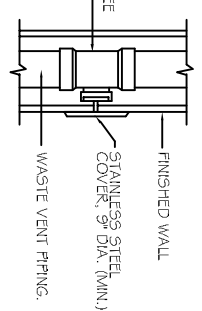
REV:	
SCALE:	AS NOTED
JOB#:	
DATE:	06-15-11
SHEET	12
	P-1
OF	12

PLUMBING NOTES

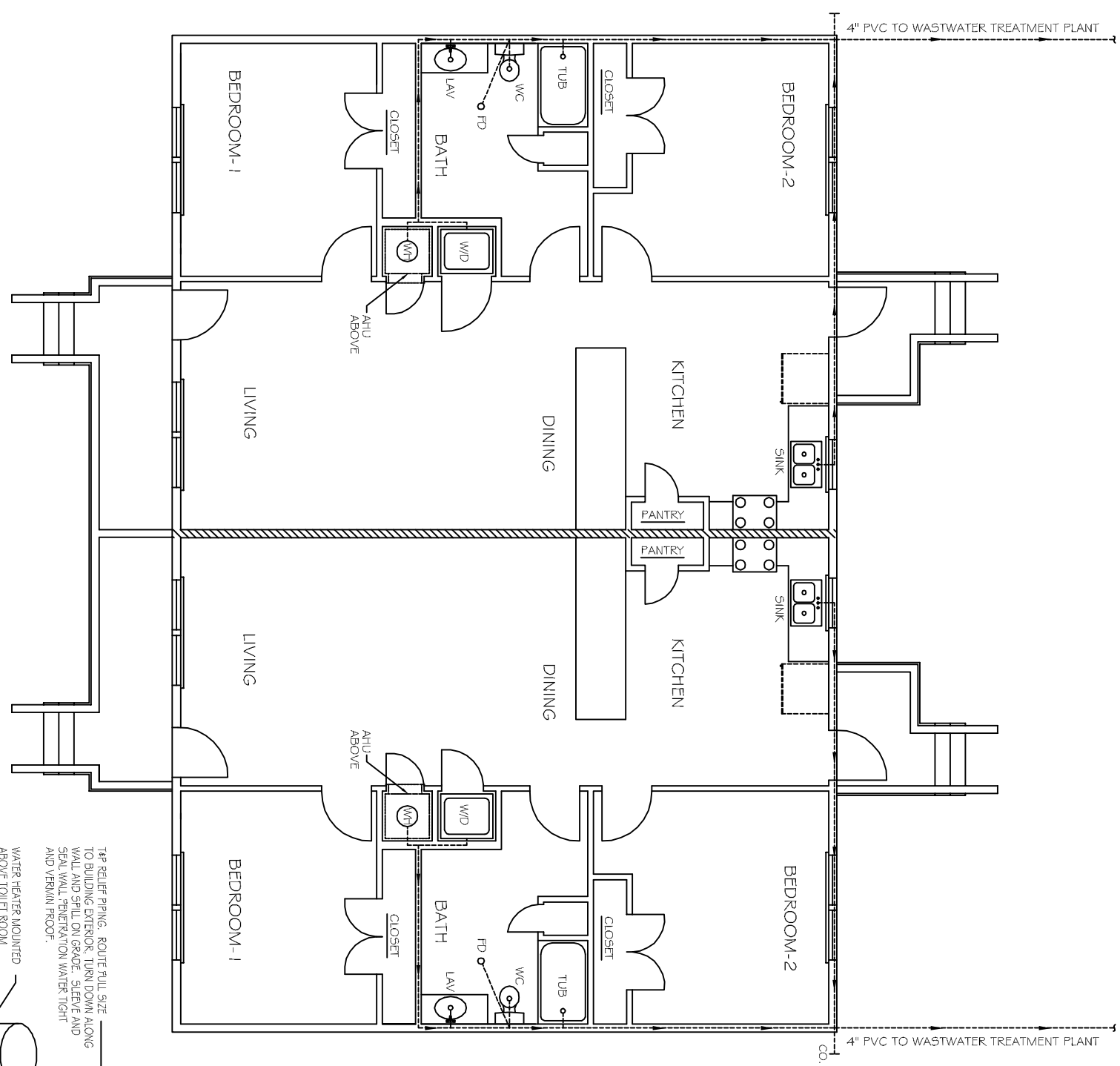
1. PROVIDE ALL LABOR, MATERIAL AND EQUIPMENT FOR A COMPLETE OPERATING SYSTEM. THE SYSTEM SHALL INCLUDE HOT AND COLD WATER PIPING, SEWER AND VENT PIPING, INSULATION, WATER HEATER, HANGERS, VALVES, SUPPORTS, WITHOUT ANY RESTRICTIONS TO COLUMN, CUT AND PATCH AS REQUIRED TO INSTALL PIPES.
2. ALL WORK AND MATERIAL SHALL CONFORM STRICTLY TO THE LATEST LOCAL, CITY, PARISH, STATE AND NATIONAL GOVERNING CODES.
3. CONTRACTOR IS TO FIELD VERIFY ALL EXISTING UTILITY LOCATIONS, ELEVATIONS AND SIZES PRIOR TO COMMENCING ANY WORK. CONTRACTOR SHALL PAY NECESSARY FEES FOR THE UTILITIES CONNECTIONS.
4. CONTRACTOR IS RESPONSIBLE TO VERIFY THE EXISTING INVERTS AND SET NEW INVERTS OF SEWERAGE AND DRAINAGE PIPES.
5. SEWERAGE LINES 3-INCH AND SMALLER SHALL BE SLOPED 1/4" PER FOOT AND LINE 4-INCH AND LARGER SHALL BE 1/8" PER FOOT.
6. TEST ALL PIPING AT REQUIRED PRESSURE.
7. ALL PLUMBING SHALL BE CLOSELY COORDINATED WITH STRUCTURAL SYSTEM, MECHANICAL SYSTEM AND ELECTRICAL, TO INSURE NO TRADES WILL CONFLICT WITH EACH OTHER.
8. DO NOT SCALE DRAWINGS. SEE ARCHITECTURAL DRAWINGS FOR EXACT LOCATIONS OF DOORS, WINDOWS, WALLS, FIXTURES, ETC.
9. ALL WATER MAINS AND PIPING NOT SHOWN FOR CLARITY, ALL LOCATIONS FIELD VERIFIED.
10. DOMESTIC HOT AND COLD WATER PIPING AND FITTINGS SLAB SHALL BE ASTM B88 COPPER WATER TUBE, TYPE K SOFT ANNEALED. NO JOINTS SHALL BE ALLOWED UNDER THE SLAB.
11. DOMESTIC WATER PIPING AND FITTINGS ABOVE THE SLAB SHALL BE ASTM B88 COPPER WATER TUBE, TYPE L, HARD DRAWN WITH COPPER PRESSURE TYPE FITTINGS, ANSI B1.6.22. THE JOINTS SHALL BE SOLDERED TYPING USING ASTM B32. ALLOW GRADE 35A (95-5) SOLDER.
12. SOIL, WASTE, VENT PIPING AND FITTINGS ABOVE THE SLAB SHALL BE SERVICE WEIGHT CAST IRON PIPE WITH BELL AND SPIGOT ENDS AND ONE PIECE NEOPRENE INSERT TYPE GASKET.
13. ALL WATER PIPING AND FITTINGS ABOVE THE FLOOR SHALL BE INSULATED WITH 1/2" THICK FIBERGLASS INSULATION AND JACKET.
14. ALL ELECTRICAL, MECHANICAL AND PLUMBING PENETRATING FIRE PARTITIONS SHALL BE FIRE CAULKED. PENETRATIONS THROUGH RATED CONSTRUCTION SHALL BE SEALED WITH A MATERIAL CAPABLE OF PREVENTING THE PASSAGE OF FLAMES AND HOT GASES WHEN TESTED IN ACCORDANCE WITH ASTM-E814.
15. ALL PLUMBING LINES SHOWN ARE DIAGRAMATIC.

MARK	DESCRIPTION	TYPE	ROUGH-IN SIZES	NOTES
WC	H.C. WATER CLOSET	VA,VE	4" 4" 4" 4"	3
LAV	H.C. LAVATORY	WA,HW	2" 2" 1/2" 1/2"	1, 2, 3
W/D	WASHER/DRYER UNIT	VA,VE	4" 4" 4" 4"	
FD	FLOOR DRAIN	-	2" 2" 2" 3/4"	4
WH	WATER HEATER DRAIN	-	2" 3/4"	
HB	HOSE BIBB	-	1/2"	

- FIGURE NOTES:
1. INSULATE PIPING FOR HANDICAP FIXTURES.
 2. PROVIDE CHAIR CARRIER FOR WALL HUNG FIXTURES.
 3. H.C. - HANDICAP FIXTURE
 4. INSTALL CONTINUOUS DRIP VALVE ON ALL FLOOR DRAINS.
 5. FIXTURES SELECTED BY OWNER.



PLUMBING PLAN
SCALE: 1/4"=1'



4" PVC TO WASTEWATER TREATMENT PLANT

4" PVC TO WASTEWATER TREATMENT PLANT