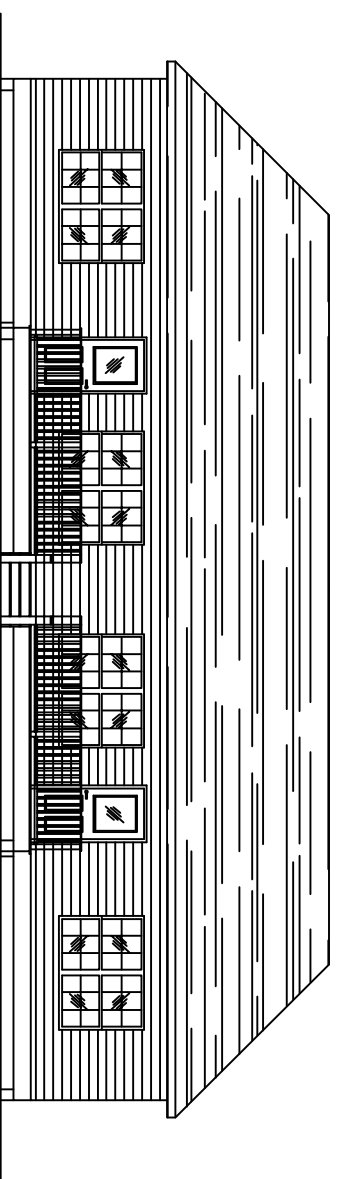


# NEW APARTMENTS FOR CASEY CIVIL, LLC TERRACE AVENUE, LOT 2A SLIDELL, LOUISIANA 70458



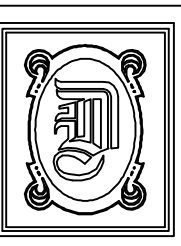
FRONT ELEVATION



VICINITY MAP  
N.T.S.

**DESIGN CRITERIA:**  
 THE CONSTRUCTION FOR SAID RESIDENCE, WHERE BASIC WIND SPEED IS 130 MILES PER HOUR, WIND EXPOSURE ZONE C, IS DESIGNED IN ACCORDANCE WITH: AMERICAN FOREST AND PAPER ASSOCIATION (AF&PA) WOOD FRAME CONSTRUCTION MANUAL FOR ONE AND TWO FAMILY DWELLINGS (WFCDM) 2001 EDITION AS WELL AS THE INTERNATIONAL RESIDENTIAL CODE (IRC) 2009 EDITION

DRAWING INDEX	
-	COVER SHEET
C-1	SITE PLAN
S-1	PIILING & FRAMING PLAN
F-1	STRAPPING DETAILS
A-1	FLOOR PLAN
A-2	BUILDING SECTION, SCHEDULES, & NOTES
A-3	EXTERIOR ELEVATIONS
A-4	EXTERIOR ELEVATIONS
M-1	MECHANICAL PLAN & DETAILS
E-1	ELECTRICAL POWER PLAN & NOTES
E-2	ELECTRICAL LIGHTING PLAN & PANELS
P-1	PLUMBING PLAN & DETAILS



**DAMMON ENGINEERING, INC.**  
 554 OLD SPANISH TRAIL OFFICE: (985) 649-5832  
 SLIDELL, LA 70458 FAX: (985) 641-5950  
 WEBSITE: WWW.DAMMONENGINEERING.COM  
 EMAIL: DAMMONENG@BELLSOUTH.NET

DATE: 06-20-11  
 JOB NO.:

NEW APARTMENTS FOR  
 CASEY CIVIL, LLC  
 TERRACE AVENUE, LOT 2A  
 SLIDELL, LA 70458