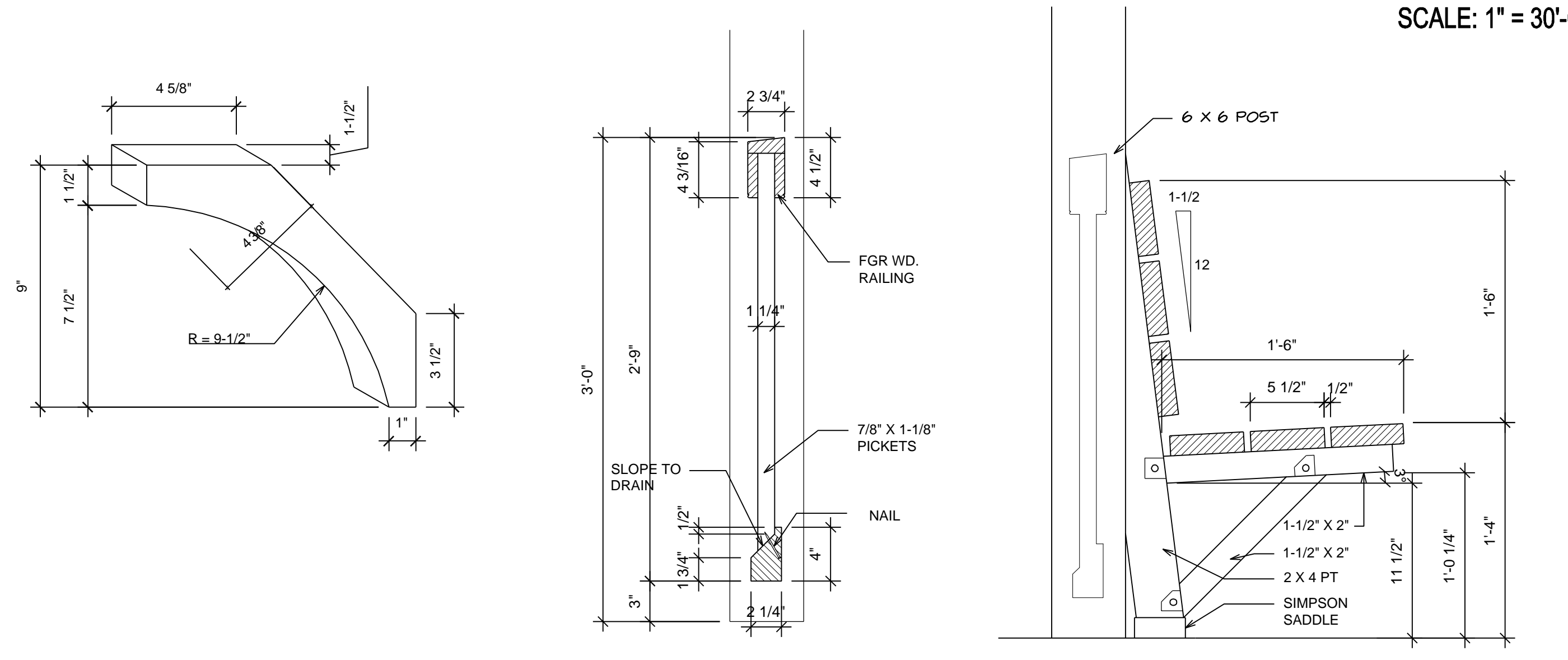


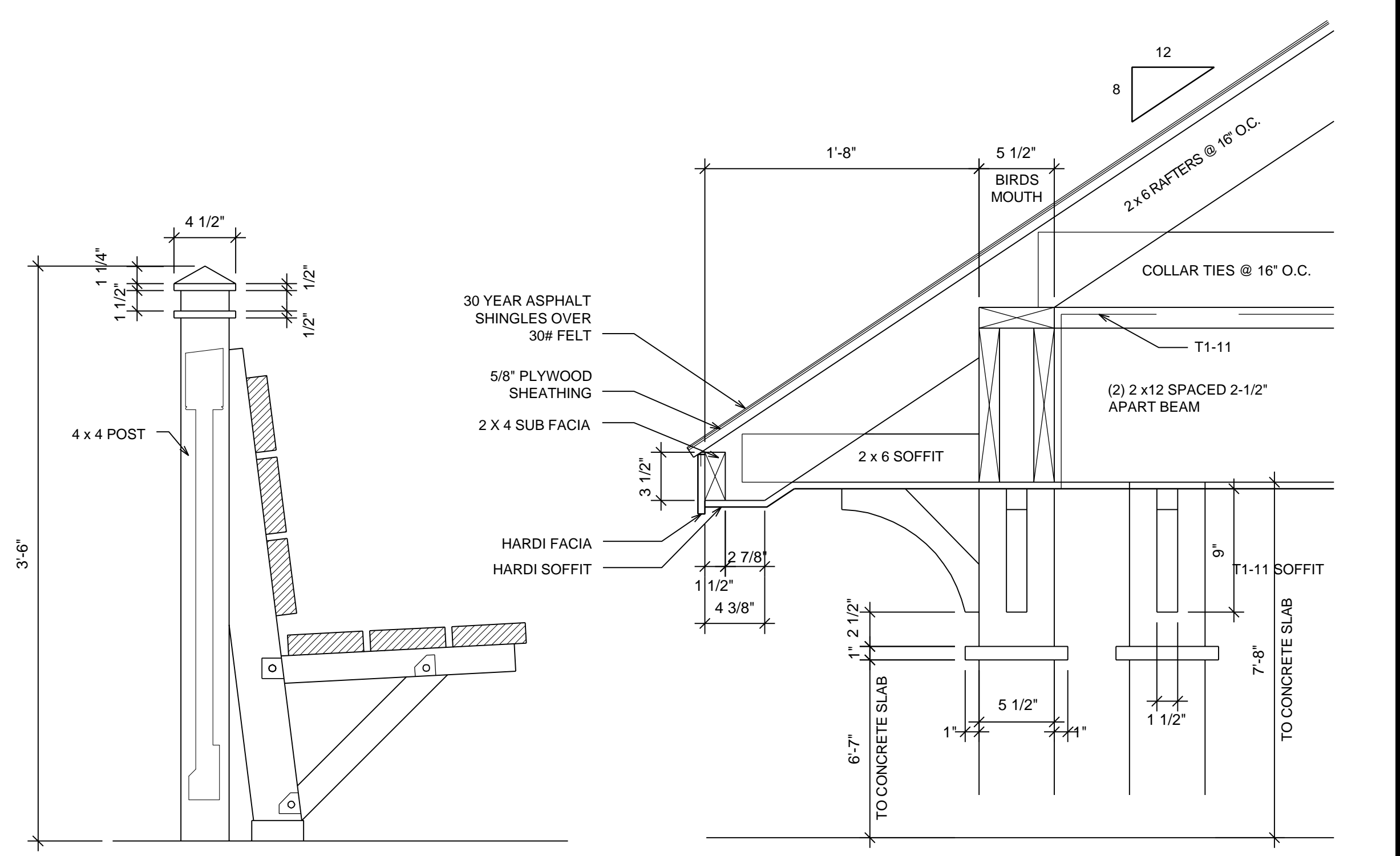
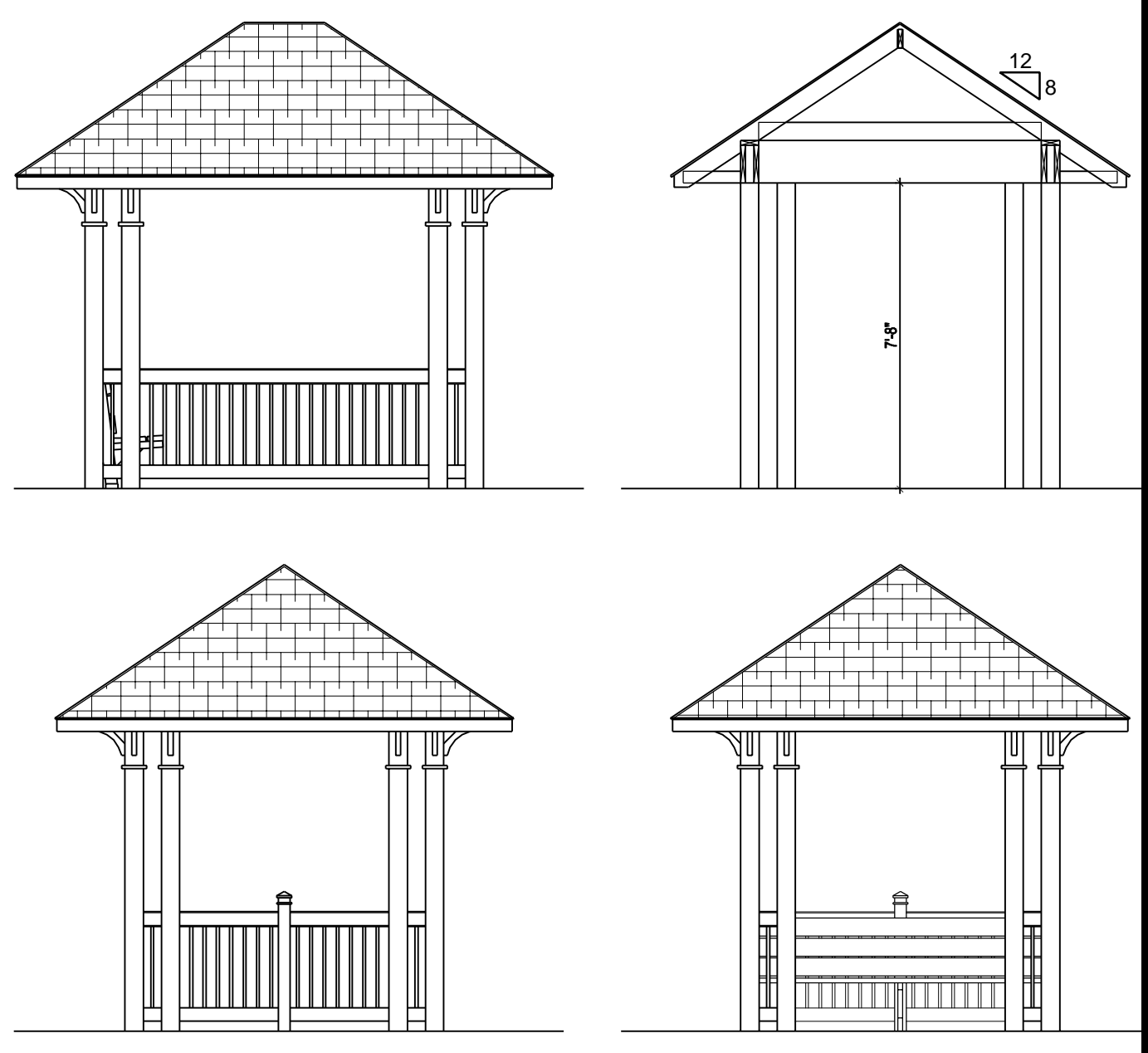
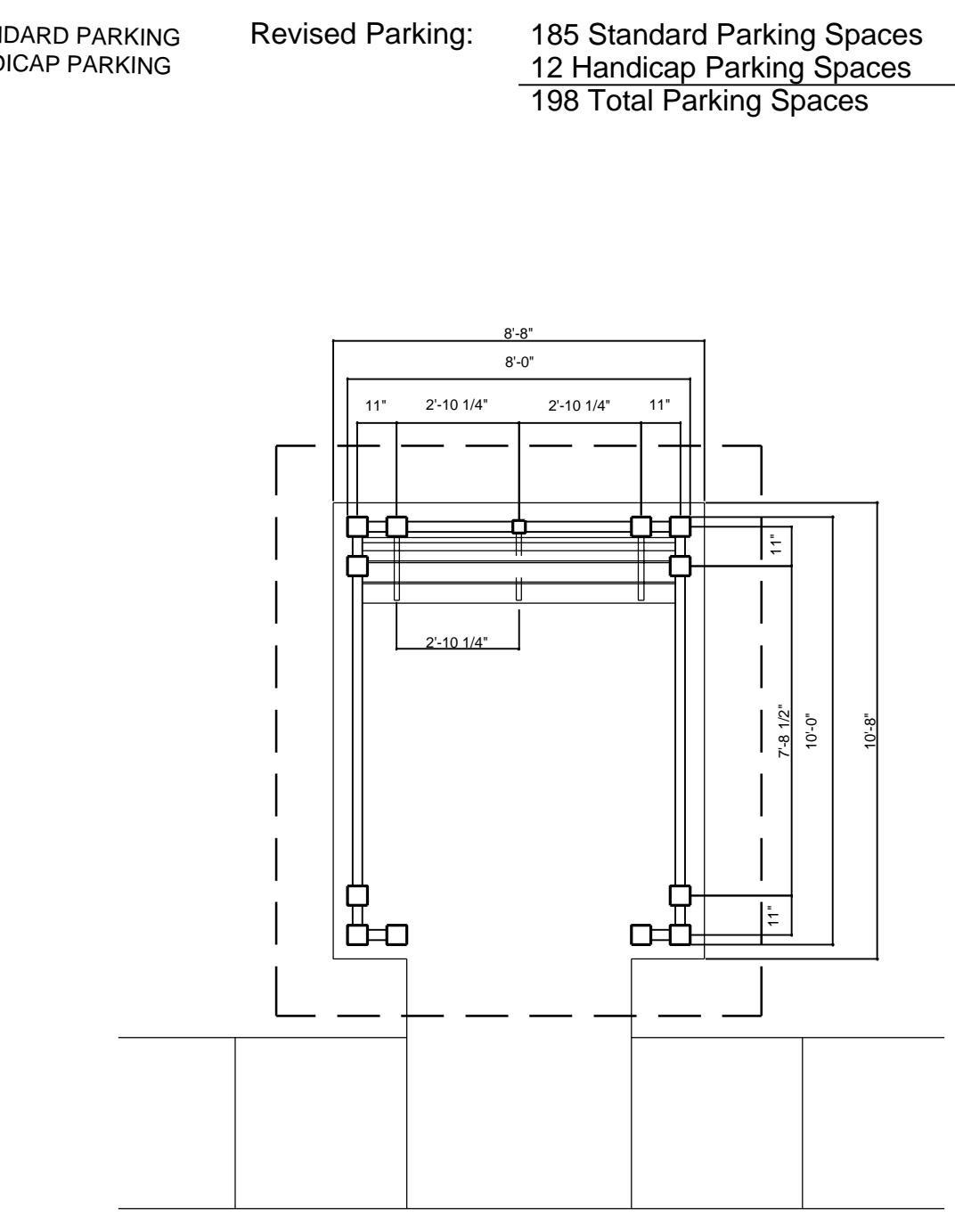
**REVISED SITE PLAN**  
HATCHED UNITS DEPICT ADA UNITS



**Chateau Thierry**

- Building Type 1: 8 - Type 1 Buildings  
3 Stories Total  
6 - 1Bedroom Units  
6 - 2Bedroom Units  
12 Units per Building
- Building Type 2: 3 - Type 2 Buildings  
3 Stories Total  
12 - 2Bedroom Units  
12 Units per Building
- 11 Buildings Total  
3 Stories Each  
48 - 1Bedroom Units  
84 - 2Bedroom Units  
132 Units Total
- Site Information: 4.25 Acres  
31 Units per Acre
- Revised Parking: 185 Standard Parking Spaces  
12 Handicap Parking Spaces  
198 Total Parking Spaces

- LEGEND**
- ELECTRIC METER
  - ELECTRIC TRANSFORMER
  - WATER METER
  - WATER VALVE
  - FIRE HYDRANT
  - DRAIN CLEANOUT
  - SEWER CLEANOUT
  - POWER POLE
  - ANCHOR
  - LIGHT POLE
  - DRAIN INLET
  - SEWER MANHOLE
  - BOARD FENCE
  - BUILDING IDENTIFICATION NUMBER
  - BBQ PIT
  - PICNIC TABLE



**GAZEBO DETAILS**

**C. SPENCER SMITH, AIA**  
architects  
a limited liability company  
1018 Bienville Street • New Orleans, Louisiana 70112  
phone: 504.566.0585 fax: 504.566.0587 email: spensmith@aol.com

FOR BID 00.00.00	DATE
FOR CONTRACT	
FOR PERMITS	
FOR CONSTRUCTION	
REVISIONS	
CAO FILE Thiercy_0401.dwg	

**CHATEAU THIERRY**  
10500 HAYNE BLVD.  
NEW ORLEANS, LOUISIANA  
XXXX  
XXXX

