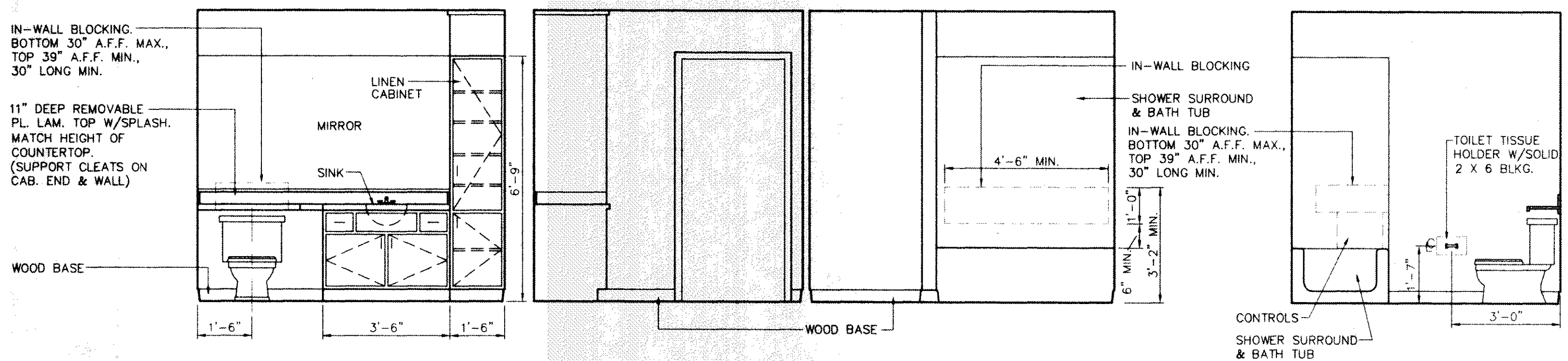
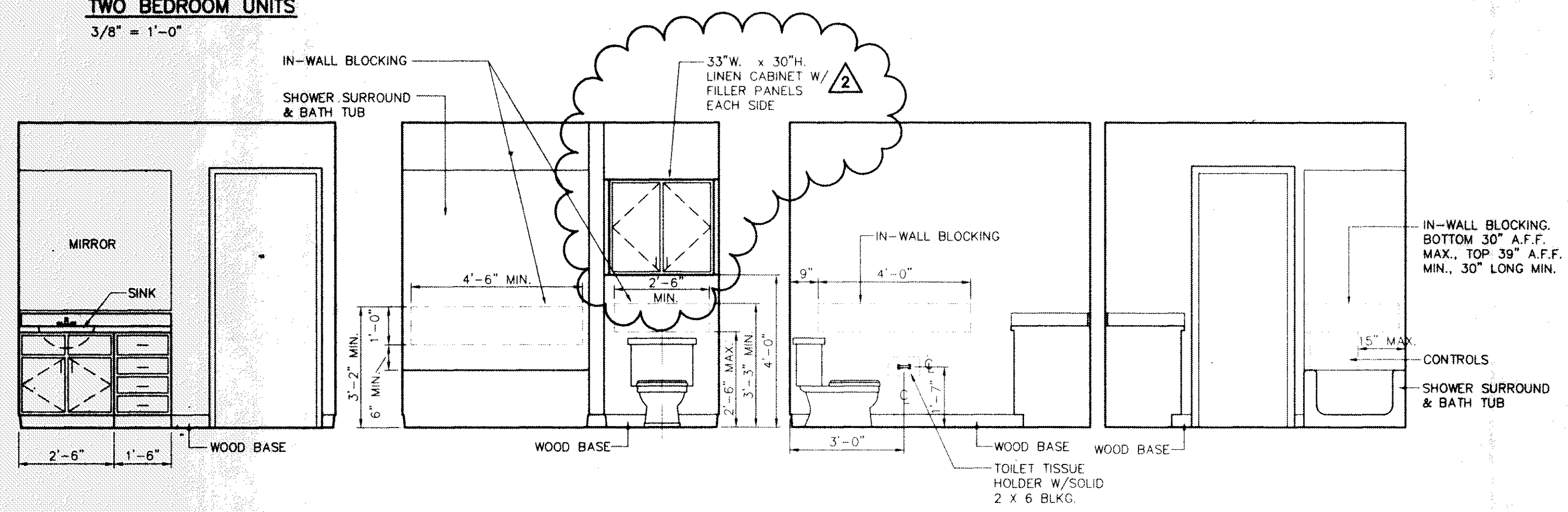


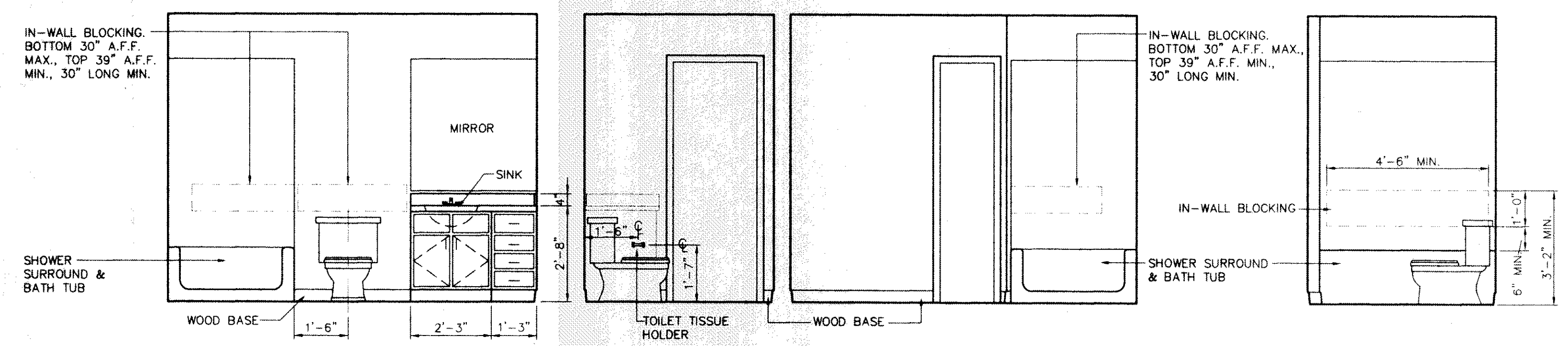
**TYPICAL BATH #1 CABINETS • BLDG. "A",
TWO BEDROOM UNITS**
3/8" = 1'-0"



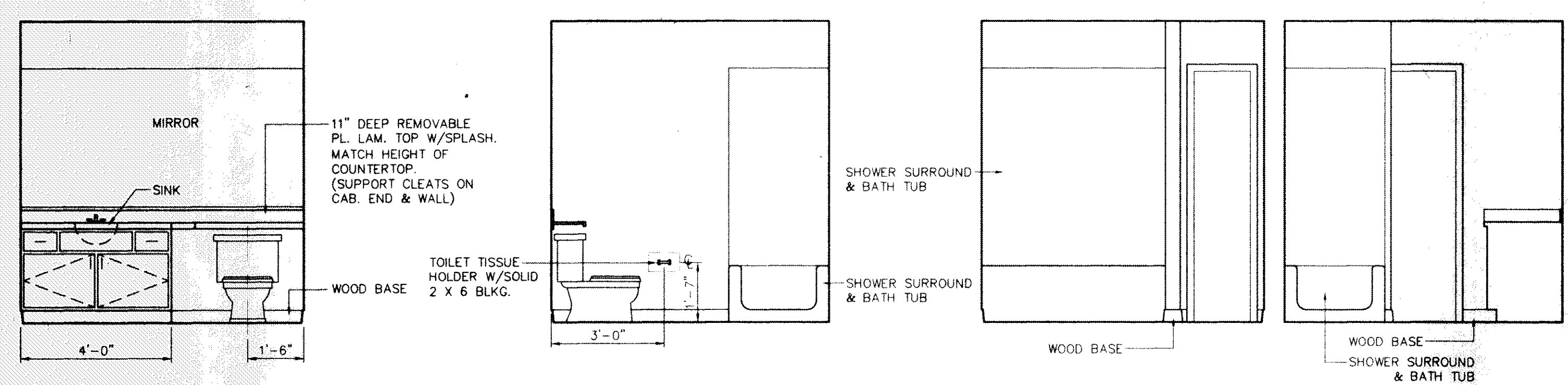
**TYPICAL BATH #2 CABINETS • BLDG. "B",
THREE BEDROOM UNITS**
3/8" = 1'-0"



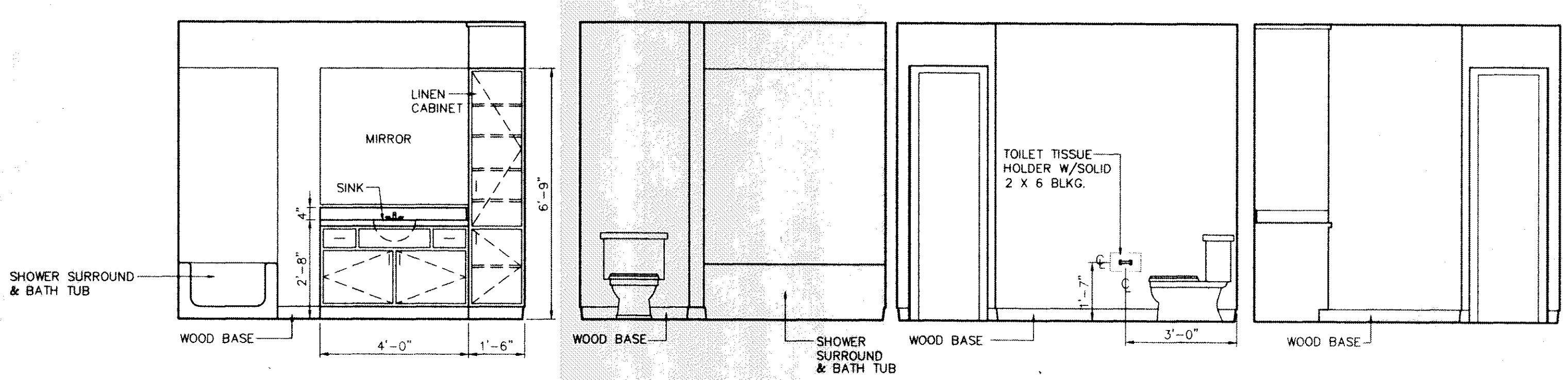
**TYPICAL BATH #2 CABINETS • BLDG. "A",
TWO BEDROOM UNITS**
3/8" = 1'-0"



**TYPICAL BATH #1 CABINETS • BLDG. "B",
THREE BEDROOM UNITS**
3/8" = 1'-0"

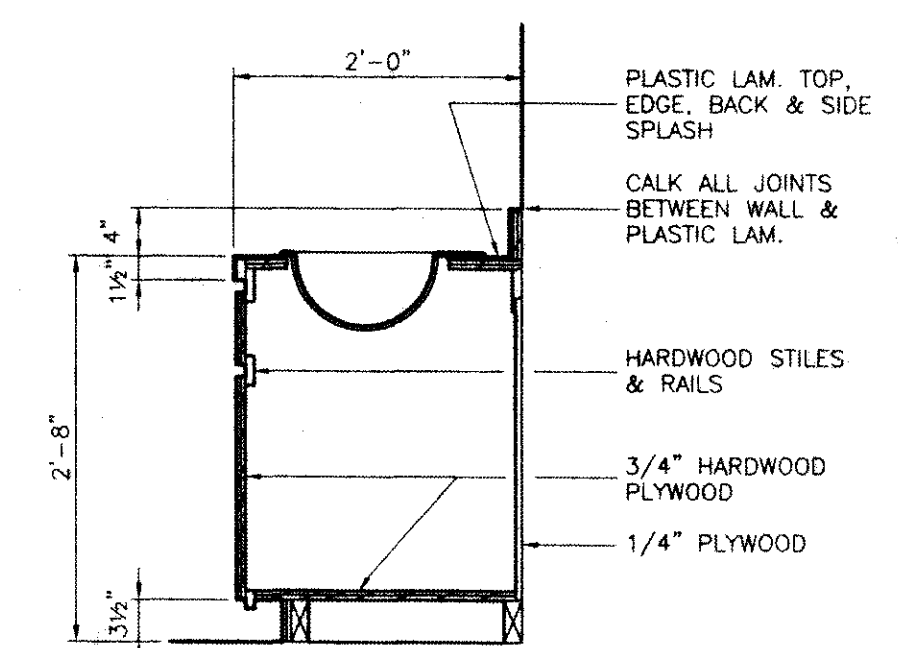


**TYPICAL BATH CABINETS • BLDG. "A",
ONE BEDROOM UNITS**
3/8" = 1'-0"

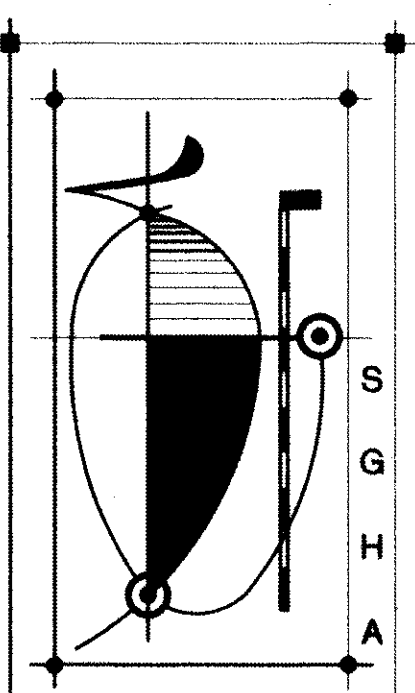


**TYPICAL BATH CABINETS • BLDG. "B",
ONE BEDROOM UNITS**
3/8" = 1'-0"

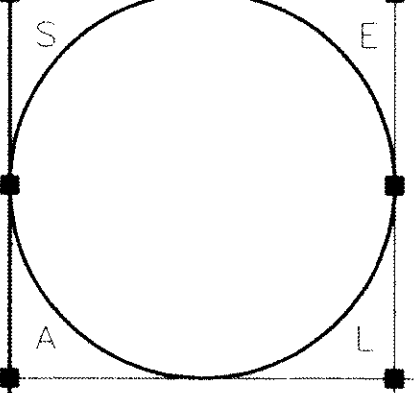
- NOTES:**
1. IN-WALL BLOCKING FOR GRAB BARS • TUBS & TOILETS • ALL GROUND FLOOR UNITS ONLY.
 2. WHERE OFFSET CONTROLS • TUB ARE SHOWN, THEY WILL OCCUR AT GROUND FLOOR DESIGNATED HANDICAPPED ACCESSIBLE UNITS ONLY.



TYPICAL LAV. CABINET
3/4" = 1'-0"



STEPHEN G. HILL
ARCHITECT
SIXTY SEVEN UNION AVE
MEMPHIS, TN 38103
901-529-8117
FAX: 901-523-0135
CELL: 901-301-2874
shill1@midssouth.rr.com



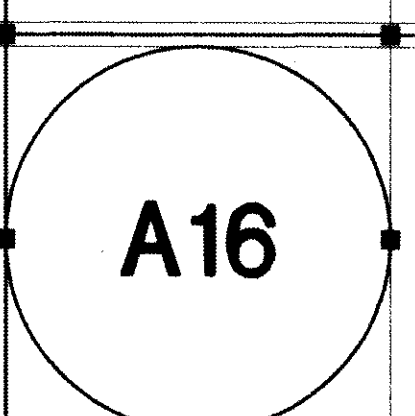
HOUSTON LEVEE TRAILS
APARTMENTS
SHELBY COUNTY, TENNESSEE

REVISIONS

Δ	REVISION NO. 2
	1-7-00

BATH ELEVATIONS
BUILDINGS "A" AND "B"

DRAWN SGH
CHECKED SGH
DATE 9-28-99



99105.13
© 1999 STEPHEN G. HILL ARCHITECT