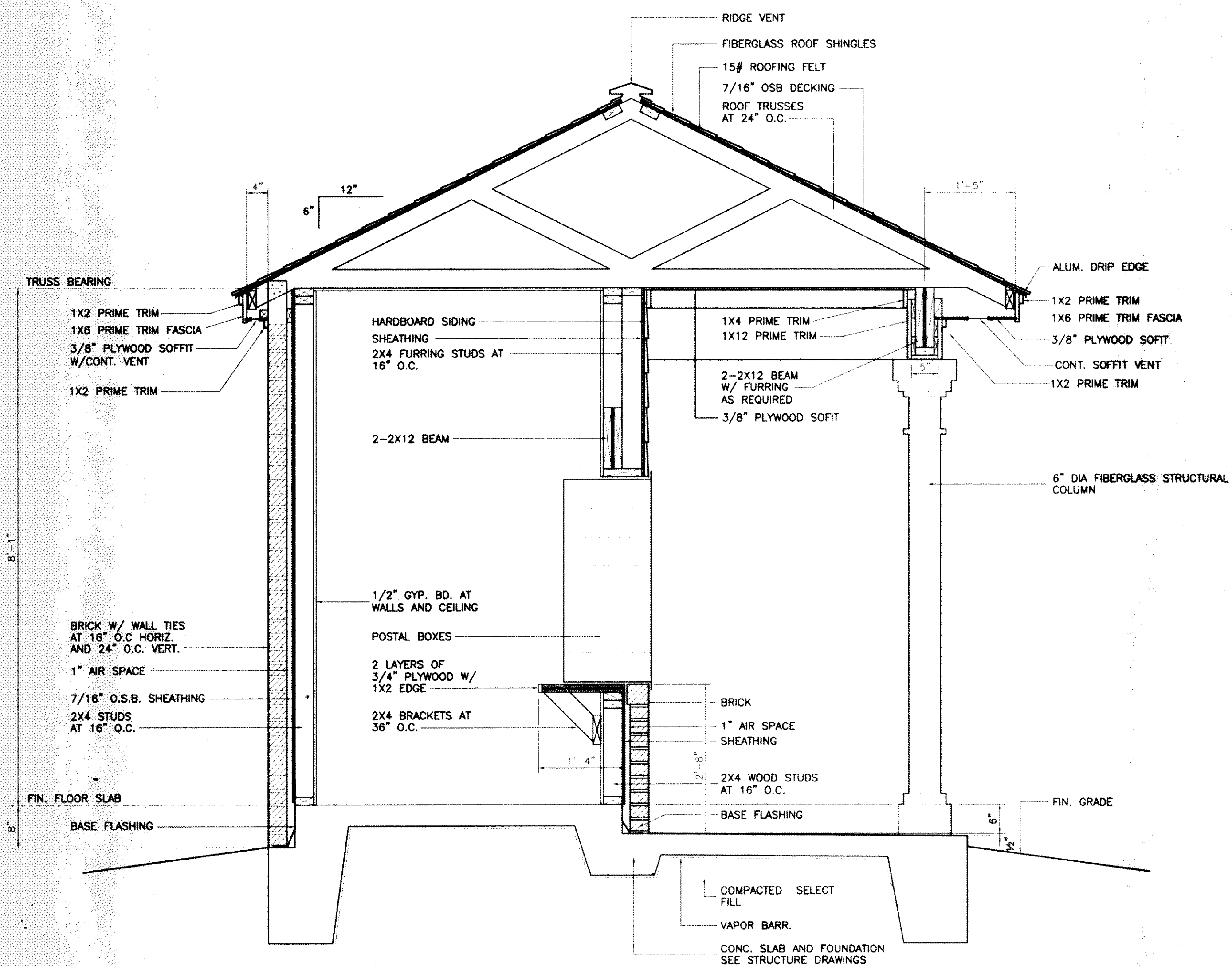
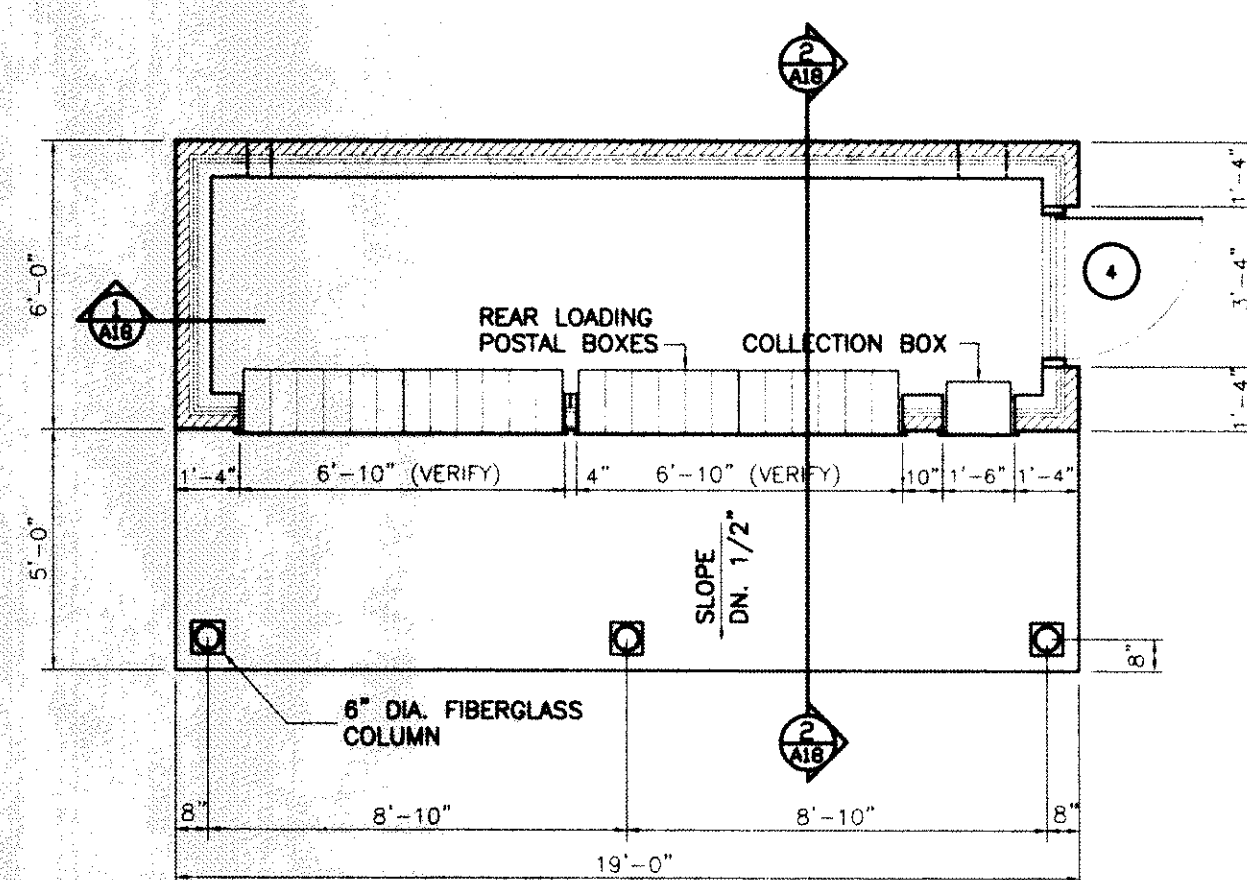
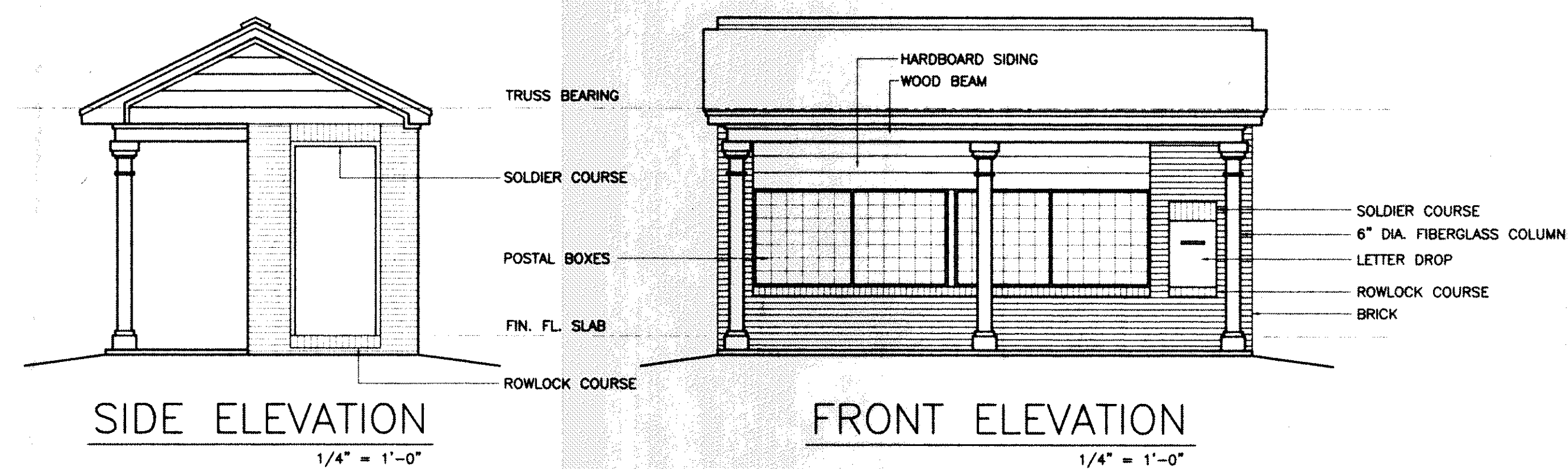
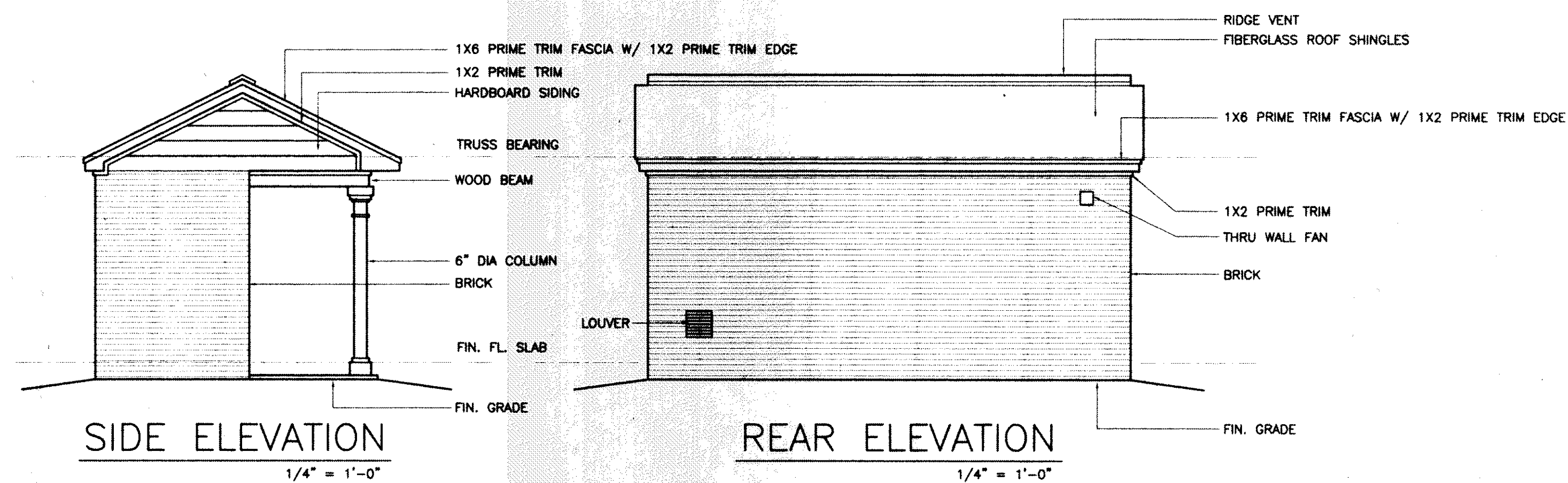


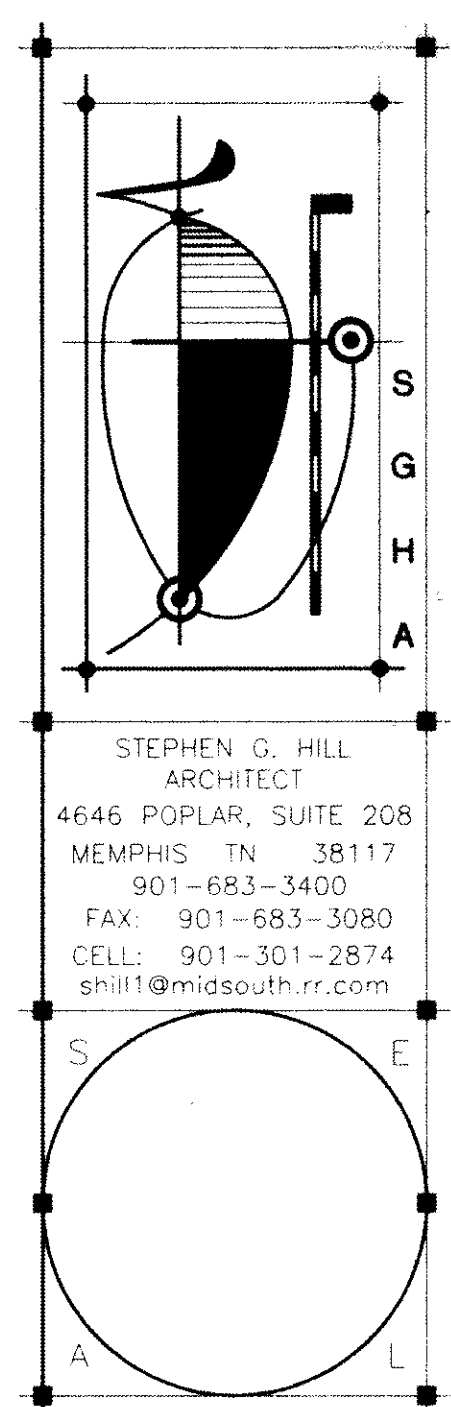
SECTION 1  
3/4" = 1'-0"



SECTION THRU BUILDING 2  
3/4" = 1'-0"



FLOOR PLAN  
1/4" = 1'-0"



STEPHEN G. HILL  
ARCHITECT  
4646 POPLAR, SUITE 208  
MEMPHIS, TN 38117  
901-683-3400  
FAX: 901-683-3980  
CELL: 901-301-2874  
shill@midsouthrr.com

HOUSTON LEEVE TRAILS  
APARTMENTS  
SHELBY COUNTY, TENNESSEE

REVISIONS


FLOOR PLAN  
ELEVATIONS  
SECTIONS  
MAIL KIOSK

DRAWN	SGH
CHECKED	SGH
DATE	9-28-99

A18

99105.13

© 1999 STEPHEN G. HILL ARCHITECT

sgh059105.13.dwg Plot: A18 Sun Oct 03 11:30:53 1999