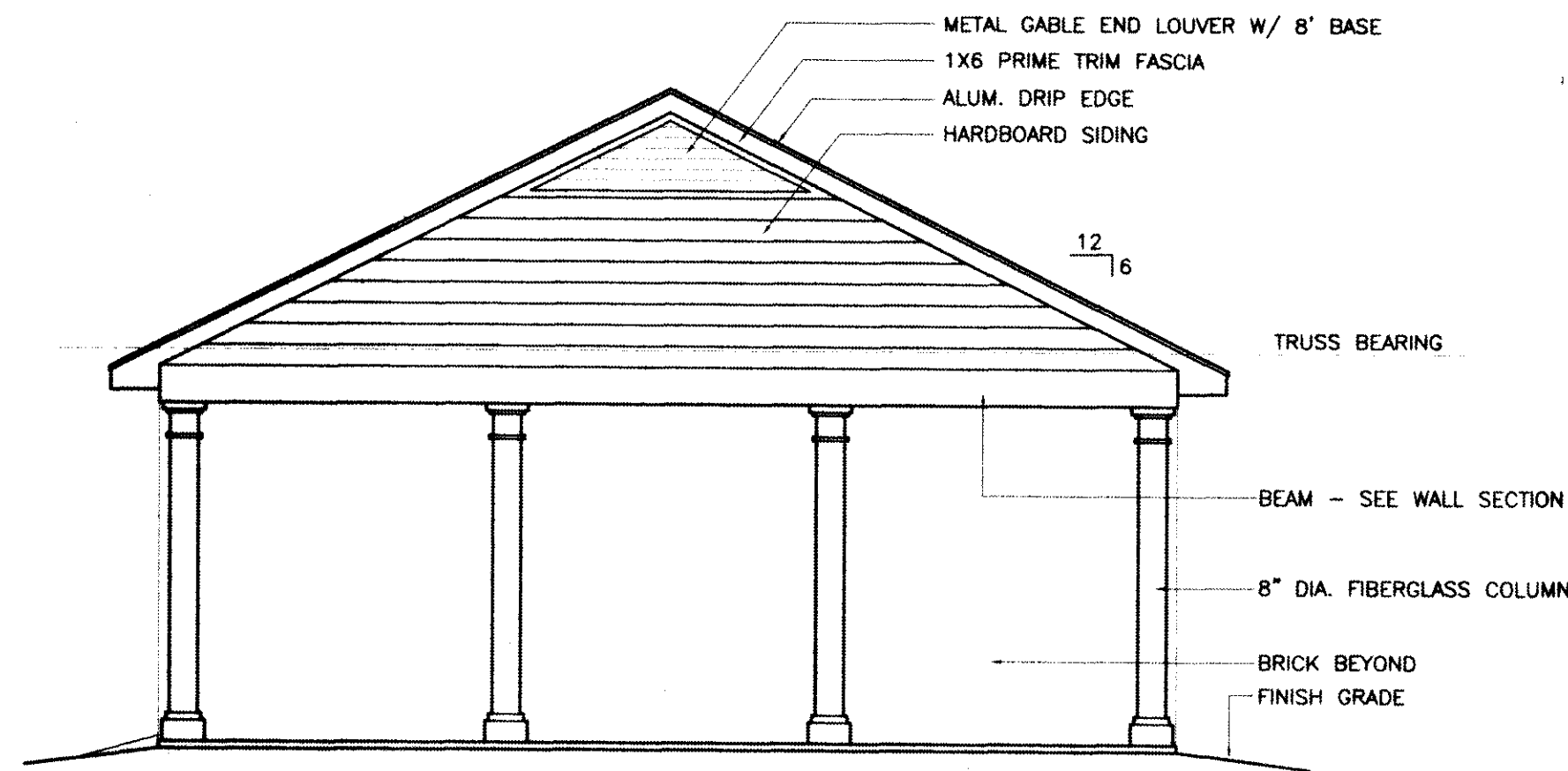


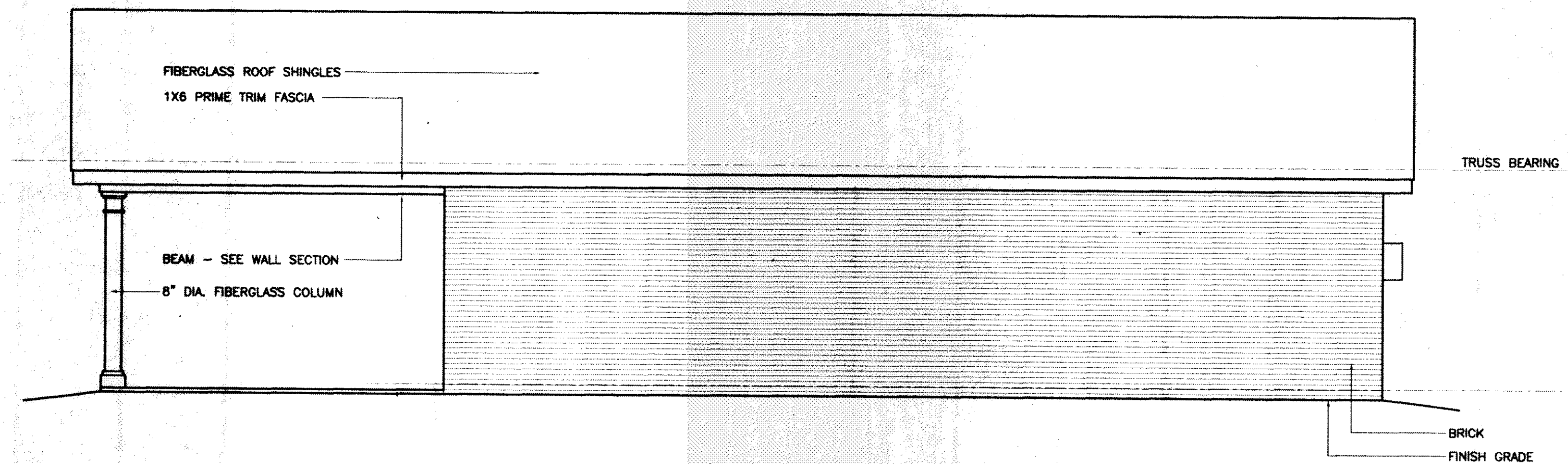
SIDE ELEVATION

1/4" = 1'-0"



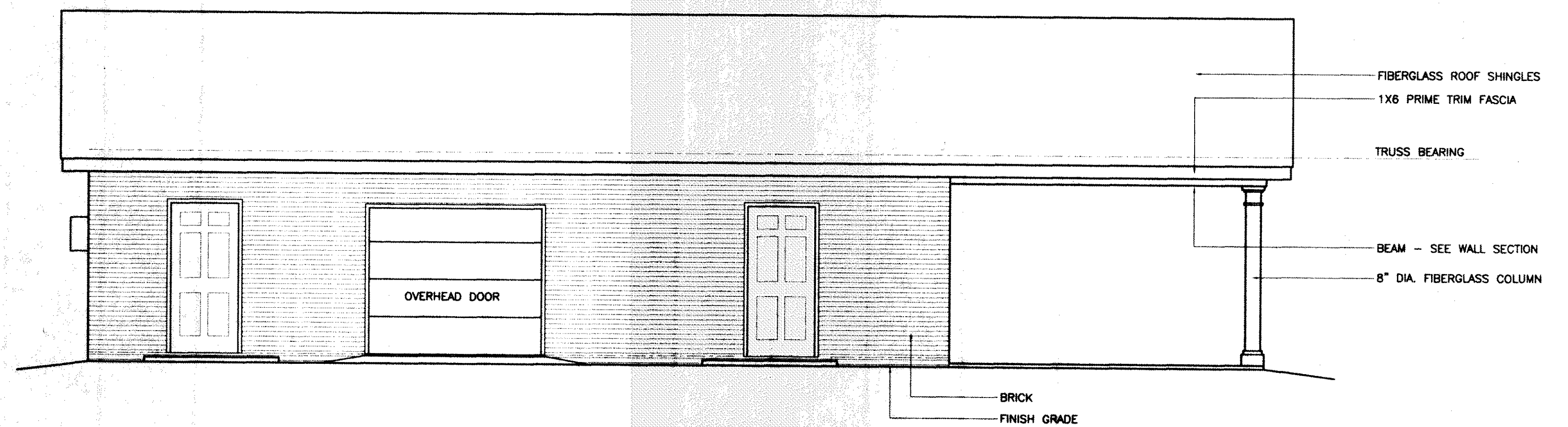
SIDE ELEVATION

1/4" = 1'-0"



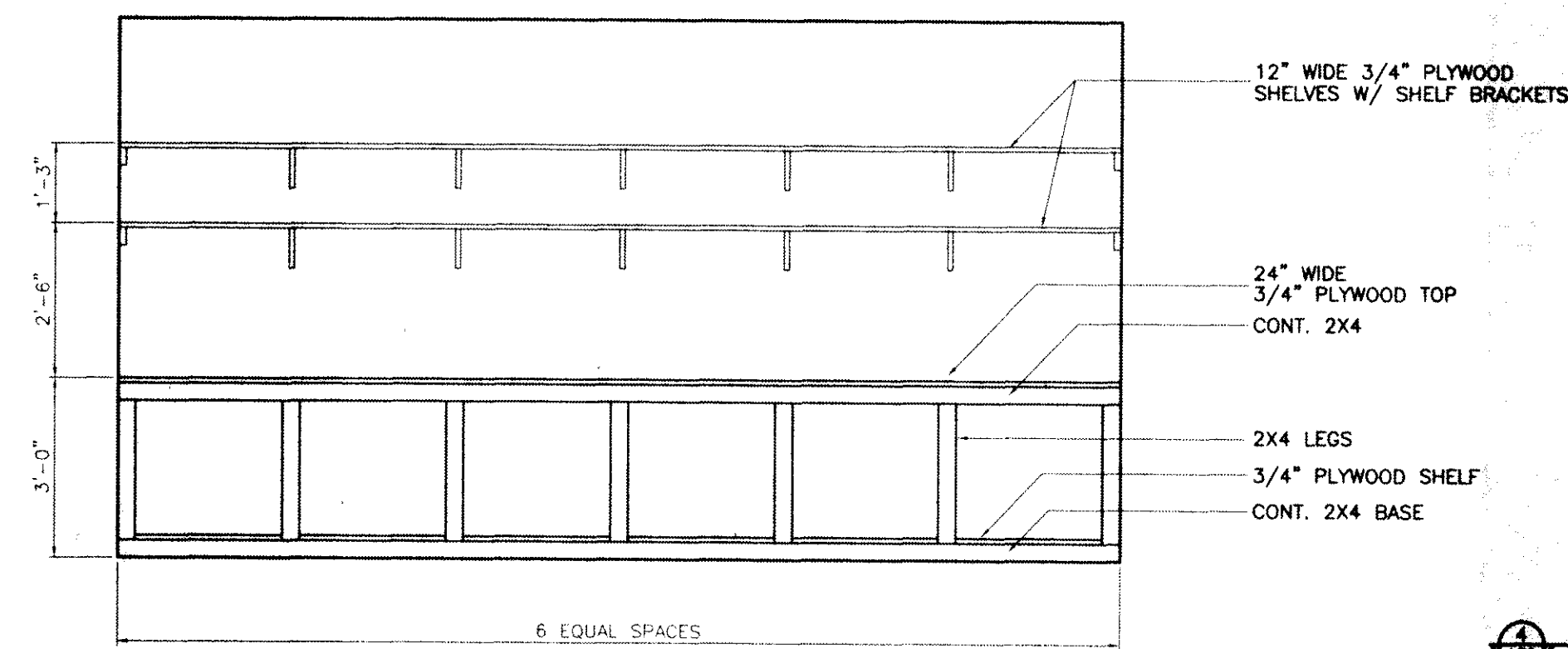
FRONT ELEVATION

1/4" = 1'-0"



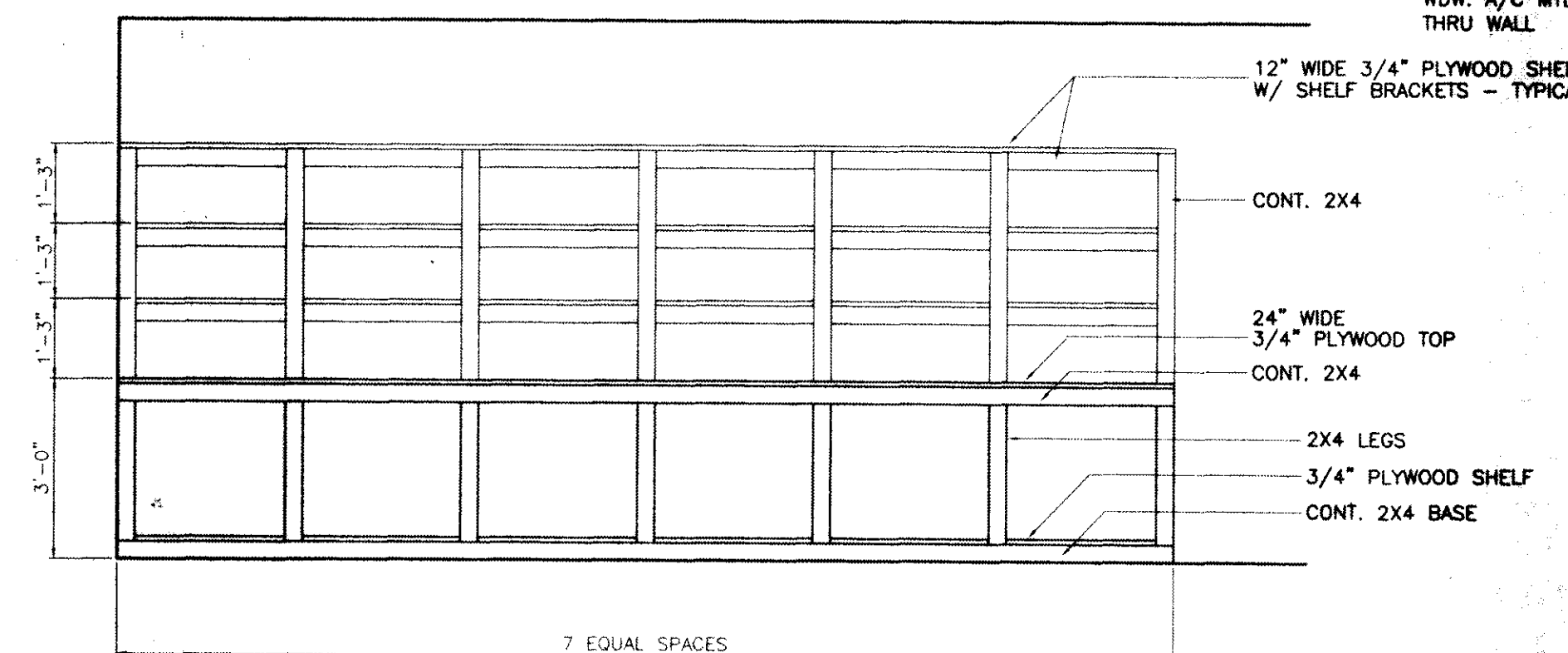
FRONT ELEVATION

1/4" = 1'-0"



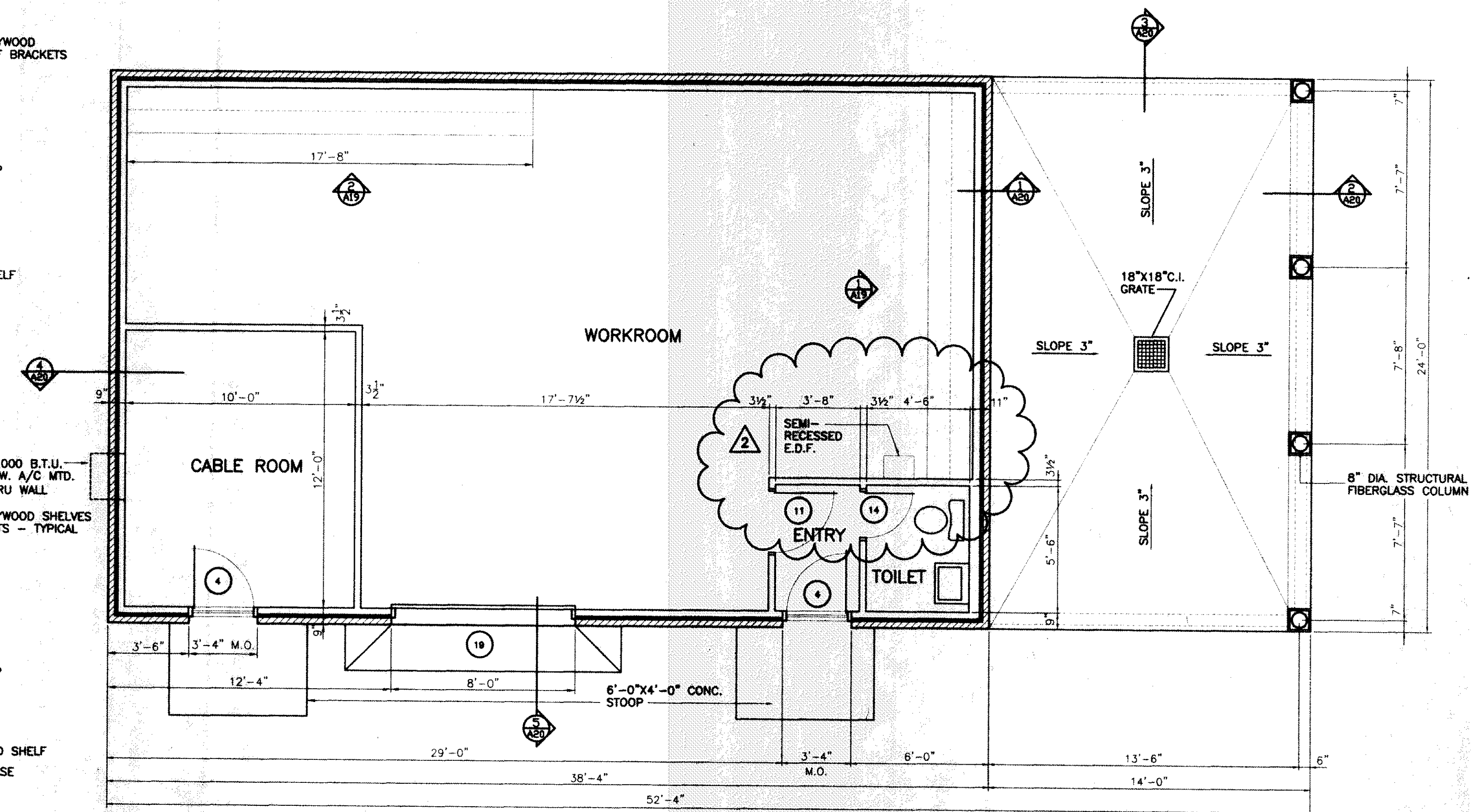
ELEVATION

3/8" = 1'-0"



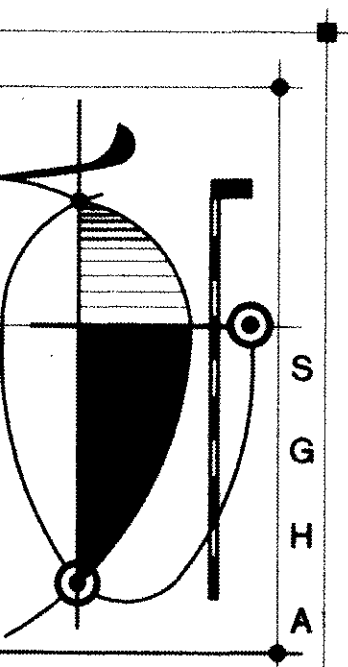
ELEVATION

3/8" = 1'-0"



FLOOR PLAN

1/4" = 1'-0"

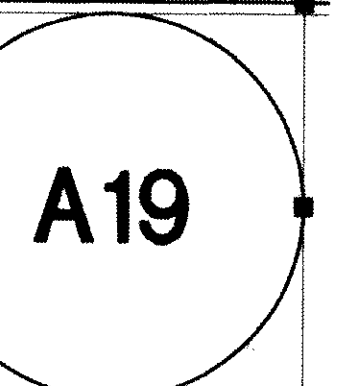


STEPHEN G. HILL  
ARCHITECT  
SIXTY SEVEN UNION AVE  
MEMPHIS TN 38103  
901-529-8117  
FAX: 901-523-0135  
CELL 901-301-2874  
shill1@midsouth.rr.com

HOUSTON LEEVE TRAILS  
APARTMENTS  
SHELBY COUNTY, TENNESSEE

| REVISIONS |                          |
|-----------|--------------------------|
| 2         | REVISION NO. 2<br>1-7-00 |

|                   |         |
|-------------------|---------|
| FLOOR PLAN        |         |
| ELEVATIONS        |         |
| MAINTENANCE BLDG. |         |
| DRAWN             | SGH     |
| CHECKED           | SGH     |
| DATE              | 9-28-99 |



99105.13

© 1999 STEPHEN G. HILL ARCHITECT