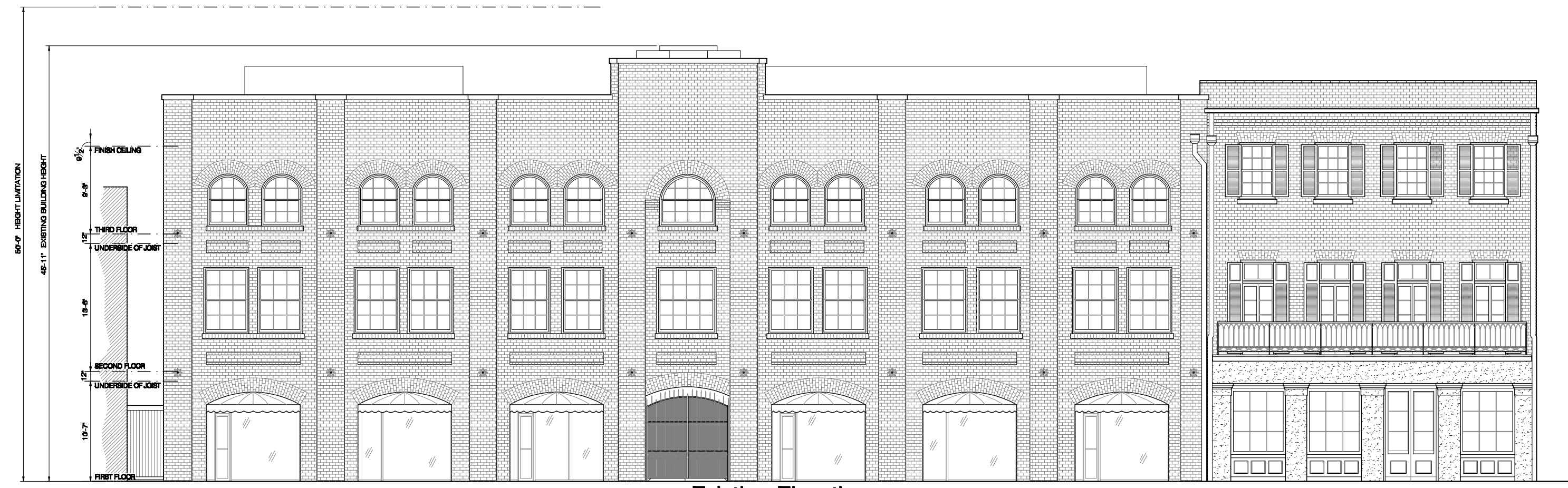


1 Proposed Elevation  
 A1.7 3/16" = 1'-0"



1 Existing Elevation  
 A1.7 3/16" = 1'-0"

TERRELL-FABACHER ARCHITECTS, L.L.C.  
 1825 St. Charles Ave., Suite 300  
 New Orleans, Louisiana 70130  
 (504) 586-1820 (fax) 504-586-1850

**TERRELL-FABACHER ARCHITECTS, L.L.C.**

These plans and specifications have been prepared by me or under my close supervision and they comply with all city requirements to the best of my knowledge and belief. The project (will/can not) be visited periodically to review job progress.

**Wilkinson Row Apartments**  
**513-533 Wilinon Street**  
 New Orleans Louisiana

NO.	REVISIONS

CHECKED BY: \_\_\_\_\_  
 DRAWN BY: \_\_\_\_\_  
 DATE: OCTOBER 22, 2010  
 JOB NO.: \_\_\_\_\_

**A1.8**  
 SHEET 8 OF 8