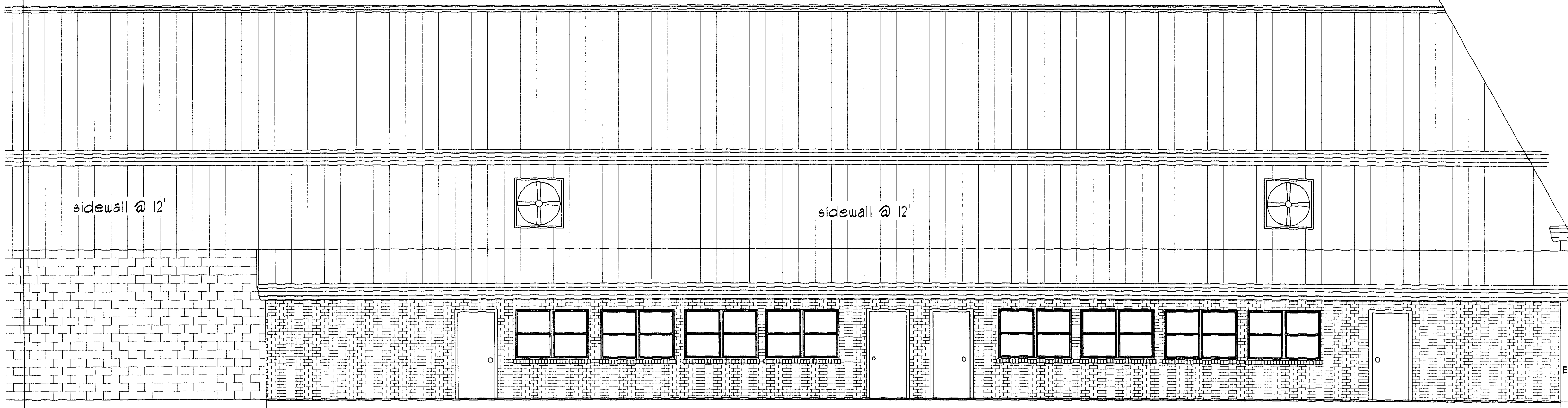


FRONT VIEW

EXISTING

SCALE: 1/4" = 1'-0"



LEFT VIEW ADDITION

SCALE: 1/4" = 1'-0"

DON MCARTH CONSTRUCTION
 2990 GAULISE BLVD EAST
 SLIDELL, LOUISIANA
 504-641-4070



CHRIST EPISCOPAL SCHOOL
GYM EXPANSION
 LA HWY #21 & CHRISTWOOD BLVD
 COVINGTON, LOUISIANA

SQUARE FOOTAGE	
AREAS OF EXPANSION	
- RIGHT EXPANSION	2,496
- LEFT EXPANSION	2,496
- REAR EXPANSION	1,820
TOTAL EXPANSION	6,812

DATE: 1 APRIL 00

JOB NO. 00-18

SHEET

7

OF SHEETS