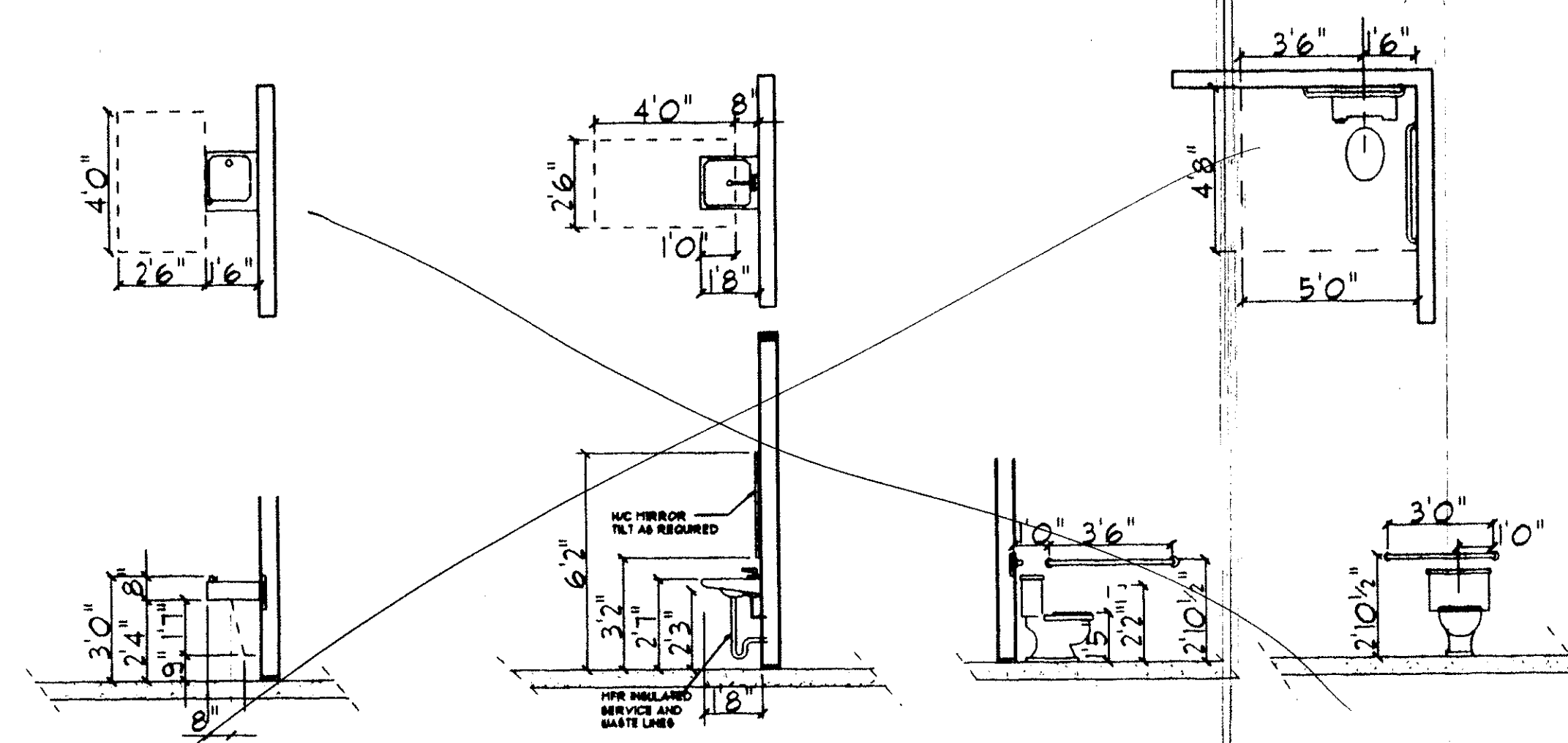
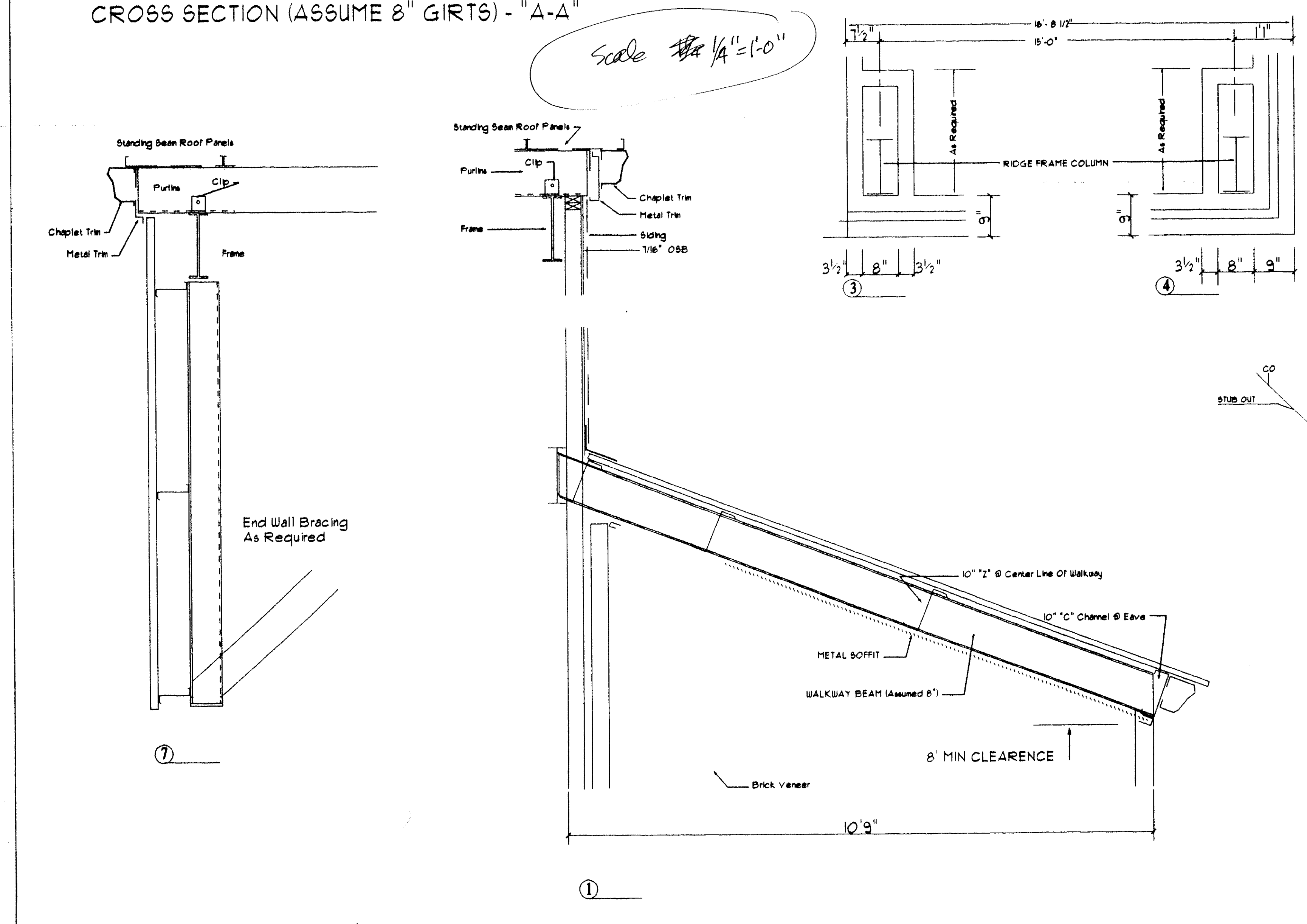


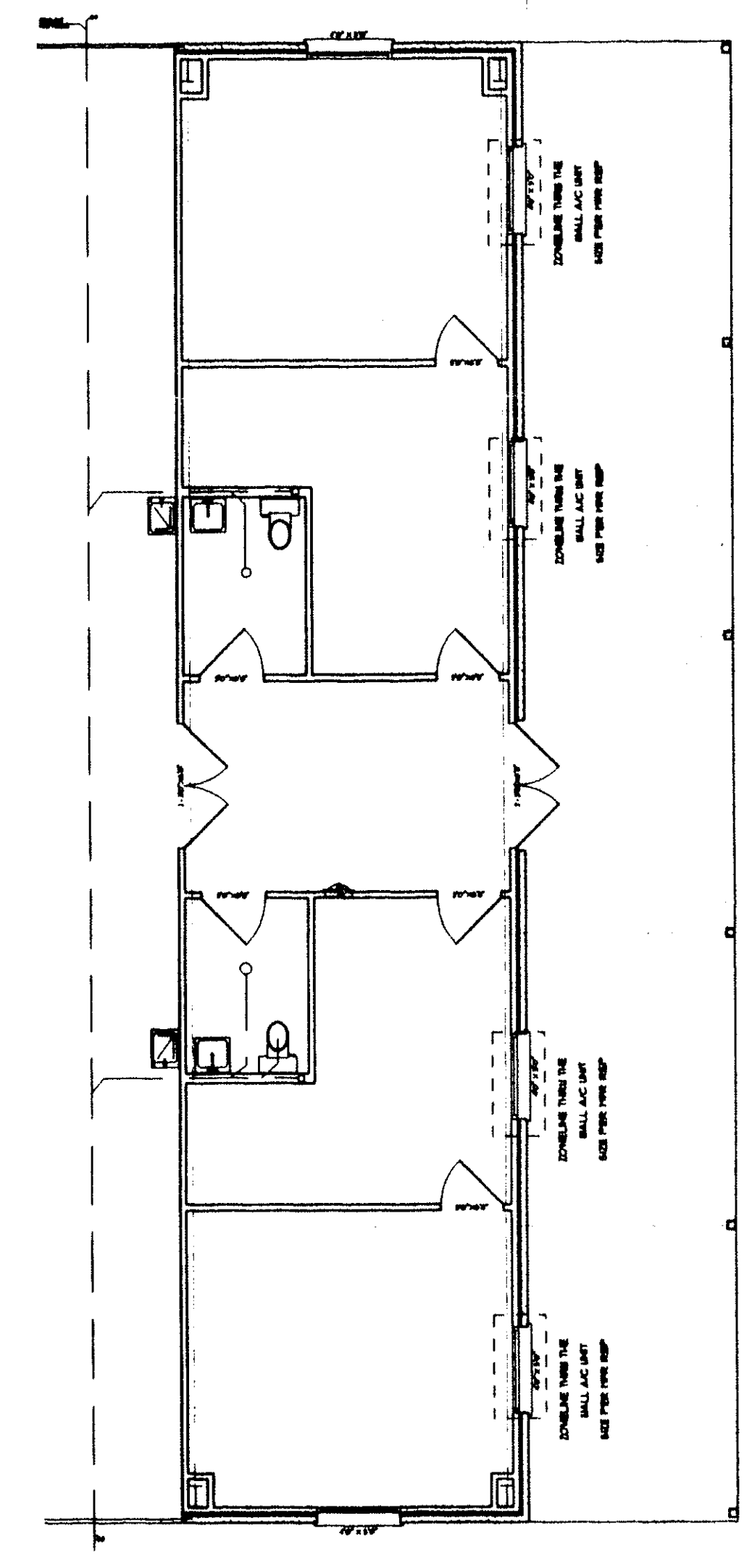
CROSS SECTION (ASSUME 8" GIRTS) - "A-A"



HANDICAP REQUIREMENTS & DETAILS

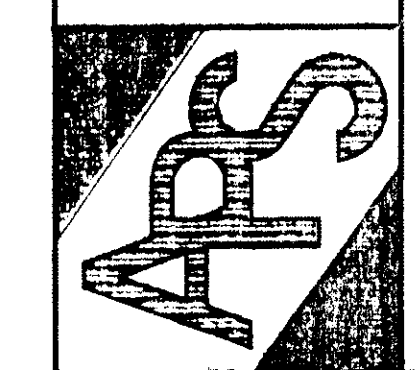


RISER DIAGRAM



MECHANICAL PLAN

PLAN SERVICE  
SLIDELL LOUISIANA



CHRIST EPISCOPAL SCHOOL  
MULTI-PURPOSE BUILDING  
LA JURY 821, COVINGTON, LOUISIANA  
FOR  
MCYATH CONSTRUCTION, INC.  
504-641-4010  
SLIDELL, LOUISIANA  
2990 GAUSE BLVD EAST

SQUARE FOOTAGE	
LIVING AREA	
1st FLOOR	8,451
2nd FLOOR	
TOTAL LIVING	8,451
STORAGE BLDG	
PORCH	
COVERED WALKWAY	100
TOTAL U/B	9,151

DATE: 28 FEB 51

JOB NO. 51-055

SHEET

6

OF 10 SHEETS