

**OCCUPANCY LOAD**

1ST FLOOR OCCUPANT LOAD  
 4,889 NET SQ. FT. (190 SQ. FT. KITCHEN)  
 4,889/15 SQ. FT. PER OCC. = 325.5  
 190/100 SQ. FT. PER OCC. (KITCHEN) = 1.5  
 MAXIMUM OCCUPANCY = 327 PERSONS

2ND FLOOR OCCUPANT LOAD  
 1,348 NET SQ. FT.  
 1,348/15 SQ. FT. PER OCC. = 90  
 MAXIMUM OCCUPANCY = 90 PERSONS

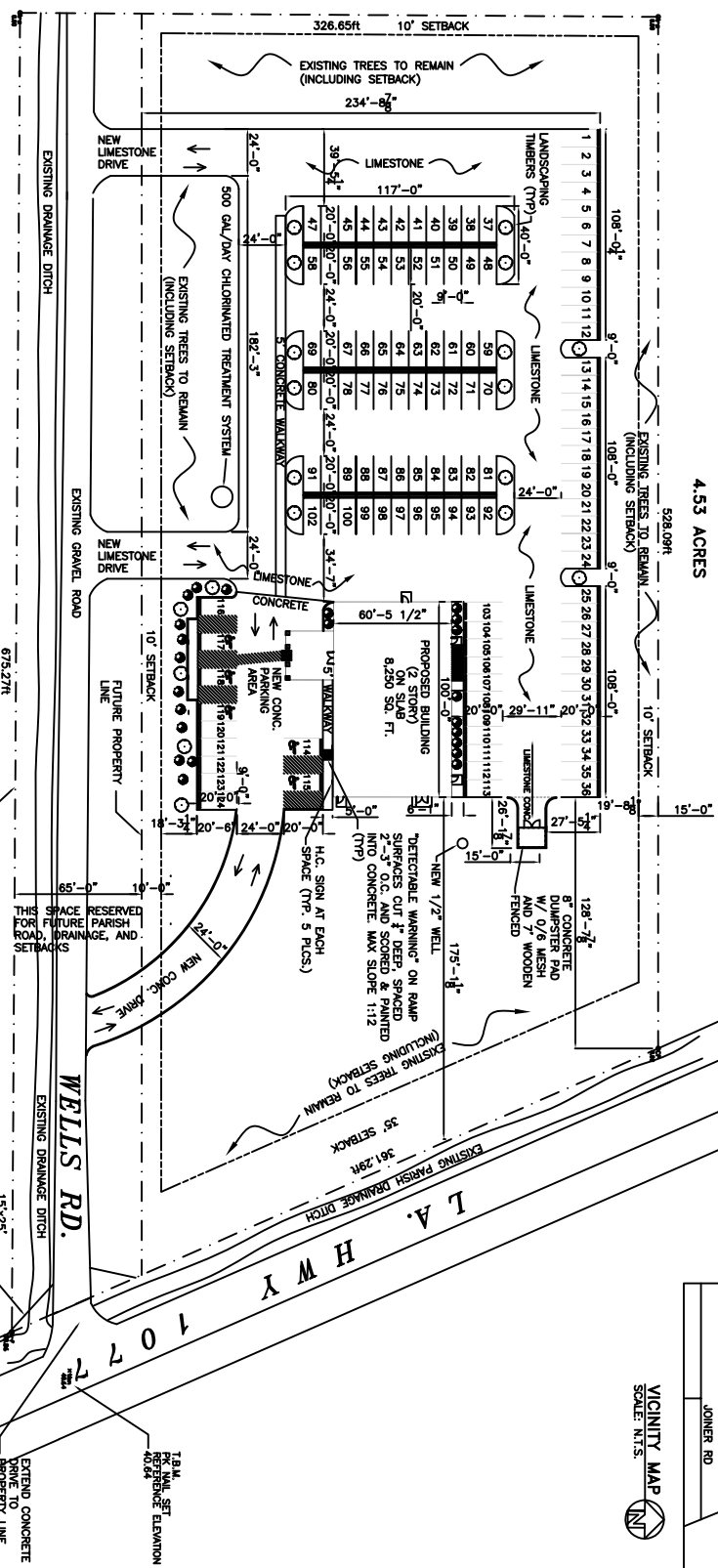
TOTAL OCCUPANT LOAD  
 2ND FLOOR = 90 PERSONS  
 1ST FLOOR = 327 PERSONS  
 MAXIMUM TOTAL OCCUPANCY = 417 PERSONS

**PARKING REQUIREMENTS**

417 OCCUPANTS / (1 OCC.) = 10425 PARKING SPACES REQUIRED  
 10425 PARKING SPACE / 25 (1 HOP PER 25) = 417 HOP PARKING REQUIRED  
 11 HOP PARKING SPACES PROVIDED  
 5 HOP PARKING SPACES PROVIDED  
 TOTAL PARKING SPACES PROVIDED = 124

NOTE:  
 PARKING AREA AND DRIVE IN FRONT OF CHURCH SHALL BE CONCRETE  
 REMAINING PARKING AND DRIVES SHALL BE LIMESTONE

4.53 ACRES



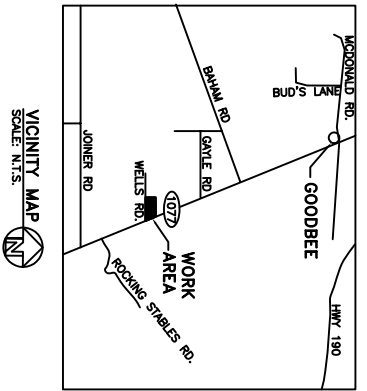
SITE PLAN  
 SCALE: 1"=50'-0"

**LEGEND**

PROPERTY LINE  
 NEW BUILDING  
 HANDICAPPED PARKING  
 WHEEL STOP  
 DUMPSTER AREA FENCE

**LANDSCAPE REQUIREMENTS**

CLASS "A" TREE SHALL HAVE A MINIMUM CALIBER OF AT LEAST 2-1/2" (MEASURED 2' ABOVE GROUND), AND A MINIMUM HEIGHT OF 10'-12"  
 SHRUB, ONE PER 10' O.C.



<p>GRACE HARBOR FAMILY CHURCH</p> <p><b>DAMMON ENGINEERING, INC.</b></p> <p>1095 FLORIDA AVENUE 985-649-5832 SLIDELL, LA. 70468        DAMMONENGINEERING.COM</p>		<p><b>SITE PLAN</b></p> <p>MIKE PATTERSON        HWY 1077        GOODBEE, LOUISIANA</p>
<p>SCALE: AS NOTED</p> <p>FILE: _____</p> <p>JOB NO. 1704</p> <p>DATE: 11-09-05</p> <p>SHEET 2</p>	<p>OF 18</p> <p>C-1</p>	