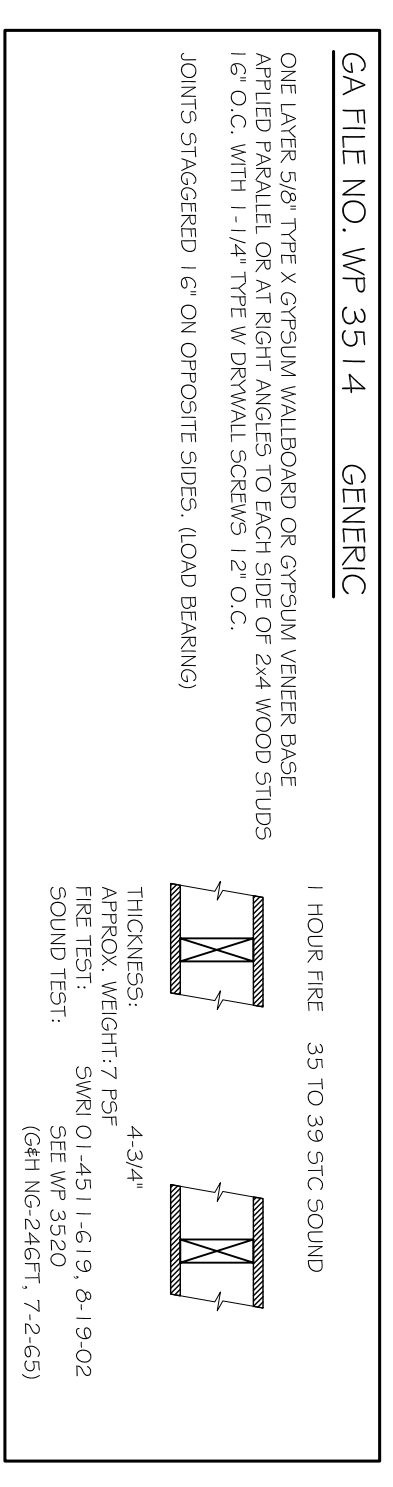


NOTE: CEILING OF THIS AREA IS EXISTING. 1 HR. RATED ASSEMBLY USING EXISTING 2\"/>

1st FLOOR PLAN
SCALE: 3/16" = 1'-0"

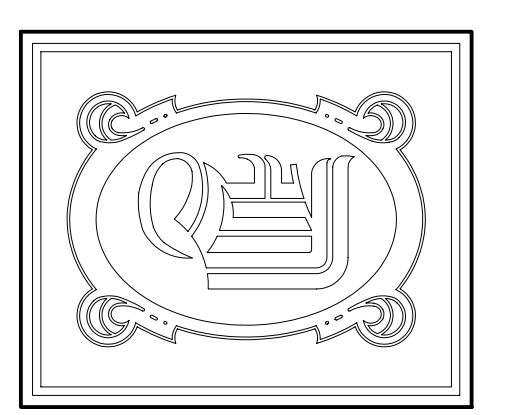
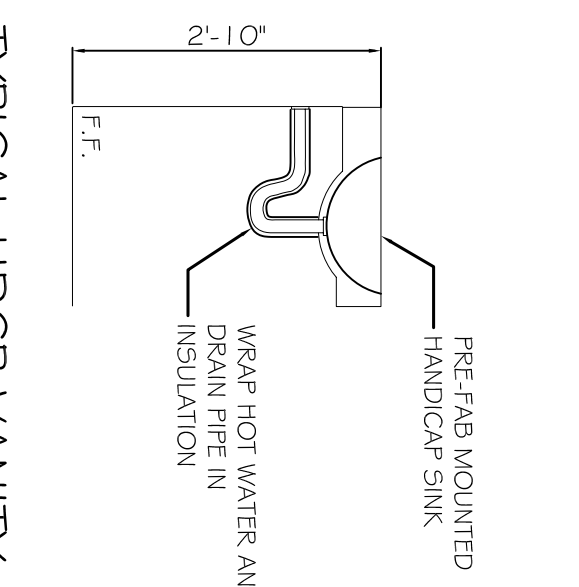
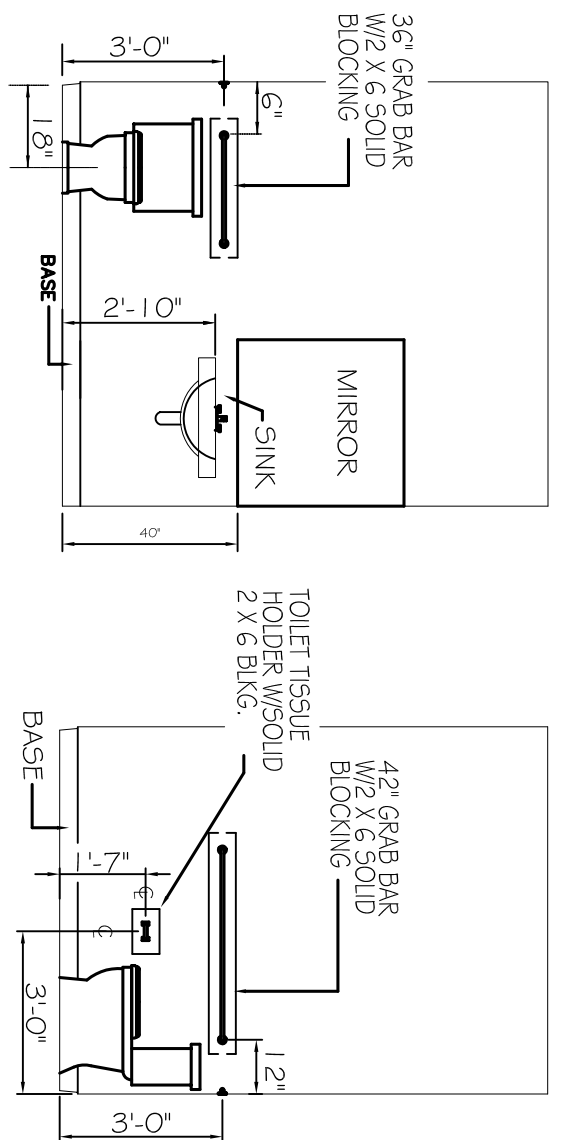
DOOR AND HARDWARE SCHEDULE		REMARKS			
NO.	TYPE	FRAMING	HINGE	LOOK	ACCESSORIES
1	WOOD	WOOD	WOOD	WOOD	WOOD
2	ALUM./GLASS	ALUM./GLASS	ALUM./GLASS	ALUM./GLASS	ALUM./GLASS
3	STEEL	STEEL	STEEL	STEEL	STEEL
4	ALUMINUM	ALUMINUM	ALUMINUM	ALUMINUM	ALUMINUM
5	WOOD	WOOD	WOOD	WOOD	WOOD
6	DOUBLE SWING	DOUBLE SWING	DOUBLE SWING	DOUBLE SWING	DOUBLE SWING
7	BURGLER PRF	BURGLER PRF	BURGLER PRF	BURGLER PRF	BURGLER PRF
8	PASSAGE	PASSAGE	PASSAGE	PASSAGE	PASSAGE
9	PRIVACY	PRIVACY	PRIVACY	PRIVACY	PRIVACY
10	DEADBOLT	DEADBOLT	DEADBOLT	DEADBOLT	DEADBOLT
11	KEYED HANDLE	KEYED HANDLE	KEYED HANDLE	KEYED HANDLE	KEYED HANDLE
12	PUSH PULL	PUSH PULL	PUSH PULL	PUSH PULL	PUSH PULL
13	PANIC BAR	PANIC BAR	PANIC BAR	PANIC BAR	PANIC BAR
14	THRESHOLD	THRESHOLD	THRESHOLD	THRESHOLD	THRESHOLD
15	WEATHERSTRIP	WEATHERSTRIP	WEATHERSTRIP	WEATHERSTRIP	WEATHERSTRIP
16	DOOR STOP	DOOR STOP	DOOR STOP	DOOR STOP	DOOR STOP
17	ALARM	ALARM	ALARM	ALARM	ALARM
18	PEEP HOLE	PEEP HOLE	PEEP HOLE	PEEP HOLE	PEEP HOLE
19	CLOSER	CLOSER	CLOSER	CLOSER	CLOSER
20	130 MPH WIND	130 MPH WIND	130 MPH WIND	130 MPH WIND	130 MPH WIND
21	45 MIN. RATED	45 MIN. RATED	45 MIN. RATED	45 MIN. RATED	45 MIN. RATED
22	1 1/2 HR. RATED	1 1/2 HR. RATED	1 1/2 HR. RATED	1 1/2 HR. RATED	1 1/2 HR. RATED
23	60 MIN. RATED	60 MIN. RATED	60 MIN. RATED	60 MIN. RATED	60 MIN. RATED

NOTE: THIS BUILDING SHALL BE FULLY SPRINKLED.



GENERAL NOTES

- INSULATION AND INSULATION ASSEMBLIES SHALL MEET THE REQUIREMENTS OF SECTION 719.
- CONCEALED INSULATION SHALL HAVE A FLAME SPREAD OF 0-25 AND A SMOKE DEVELOPED INDEX OF 0-450. EXCEPT THAT IN COMBUSTIBLE WOOD FRAMED CONSTRUCTION.
- FRACING SHALL COMPLY WITH IRC 2003.
- FRAMED FLOOR, OUTSIDE EXTERIOR DOORS, THRESHOLDS SHALL BE NOT MORE THAN 1/2" IN HEIGHT AND SHALL BE DEVELOPED IF MORE THAN 1/4".
- DIMENSIONS ARE TO CENTER-LINE, FACE OF STUDS, CENTER OF COLUMNS, OR FACE OF VENER.
- CONTRACTOR TO VERIFY ALL SITE CONDITIONS, BUILDING LOCATIONS, AND DIMENSIONS.
- MATERIAL TO BE USED SHALL BE LISTED.
- NO WORK SHALL BE CONCEALED UNTIL APPROVED BY LOCAL INSPECTORS.
- CONSTRUCTION SHALL COMPLY WITH ALL PARISH, STATE, AND LOCAL CODES.
- CONTRACTOR SHALL GUARANTEE WORK FOR ONE YEAR.
- CONTRACTOR SHALL FURNISH WATER AND POWER FROM EXISTING SOURCES.
- EXTERIOR CONDITIONS SHALL BE THINWALL CONSTRUCTION.
- FRAMING SHALL BE 2X4 OR EQUIVALENT OR EQUIVALENT. ALL WORK TO RECEIVE 3 COATS. COLOR SELECTION BY OWNER.
- PROVIDE CLEAN-UP ON A REGULAR BASIS. NO TRASH STORED IN BUILDING.
- ALL BATT INSULATION SHALL HAVE A CLASS 75 (0-25) FLAME SPREAD IN COMPLIANCE WITH APPLICABLE CODE.
- USE 6" STUDS, ONE 4" STAGGERED STUDS, AT ALL PLUMBING WALLS.
- PROVIDE 1/2" GYPSUM WALLBOARD OR GYPSUM VENEER BASE.
- ALL CONCRETE SHALL BE PROPERLY BRACED FOR WIND LOADS. A 49" SHEATHING SHALL BE PROVIDED EVERY 20 FEET OF WALL LENGTH.
- FLOORING SHALL BE NON-SLIP.
- INTERIOR LOCKS ON DOORS IN MEANS OF EGRESS SHALL NOT REQUIRE THE USE OF A KEY, SPECIAL KNOWLEDGE, OR SPECIAL DEVICE TO OPEN IN THE DIRECTION OF EGRESS. ALL INTERIOR WALLS AND CEILINGS SHALL HAVE A FLAME SPREAD OF 0-200 AND A SMOKE DEVELOPMENT RATING OF 0-450.
- ALL WORK SHALL COMPLY WITH THE LATEST EDITION OF ALL LOCAL, STATE, AND NATIONAL CODES COVERING THE TYPE OF WORK BEING PERFORMED.
- PROVIDE PORTABLE FIRE EXTINGUISHERS IN ACCORDANCE WITH NFPA 101. SEE APPENDIX 21.
- ALL ELECTRICAL, MECHANICAL, AND PLUMBING MATERIALS PENETRATING FIRE WALLS SHALL BE FIRE CAULKED. PENETRATIONS THROUGH RATED CONSTRUCTION SHALL BE SEALED WITH A MATERIAL CAPABLE OF PREVENTING THE PASSAGE OF FLAMES AND HOT GASES WHEN TESTED IN ACCORDANCE WITH ASTM E-151.
- APPROVED FIRE CAULK.
- ALL FIRE WALLS SHALL EXTEND TIGHT TO ROOF SHEATHING, AND BE SEALED WITH AN APPROVED FIRE CAULK.
23. ALL ELECTRICAL, MECHANICAL, AND PLUMBING MATERIALS PENETRATING FIRE WALLS SHALL BE FIRE CAULKED. PENETRATIONS THROUGH RATED CONSTRUCTION SHALL BE SEALED WITH A MATERIAL CAPABLE OF PREVENTING THE PASSAGE OF FLAMES AND HOT GASES WHEN TESTED IN ACCORDANCE WITH ASTM E-151.



DAMMON
ENGINEERING, INC.
CHIEF ENGINEER
EMMETT
DAMMON, P.E.
CHIEF ARCHITECT
ROBERT
WILTSE

1095 FLORIDA AVENUE
SLIDELL, LA, 70458
OFFICE: 985-649-5632
FAX: 985-641-5950

WWW.DAMMONENGINEERING.COM
EMAIL:
DAMMONENG@BELL-SOUTH.NET

ALDERGATE
UNITED METHODIST
ALTERATIONS
AND RENOVATIONS

DALE KIMBALL
2515 CAREY STREET
SLIDELL, LA

FIRST FLOOR
PLAN

REV:
SCALE: AS NOTED
JOB#: 1795
DATE: 6-17-08
SHEET 3
A-1
OF 8