

DAMMON
ENGINEERING, INC.
CHIEF ENGINEER
EMMETT
DAMMON, P.E.
CHIEF ARCHITECT
ROBERT
WILLIWE

1095 FLORIDA AVENUE
SLIDELL, LA, 70458
OFFICE: 985-649-5632
FAX: 985-641-5950

WEBSITE:
WWW.DAMMONENGINEERING.COM
EMAIL:
DAMMONENR@Bellsouth.net

ARCHITECTURE
ENGINEERING
STUDIES
PLANNING
INVESTIGATION
EXPERT WITNESS

ALDERSGATE
UNITED METHODIST
ALTERATIONS
AND RENOVATIONS

DALE KIMBALL
2515 CAREY STREET
SLIDELL, LA

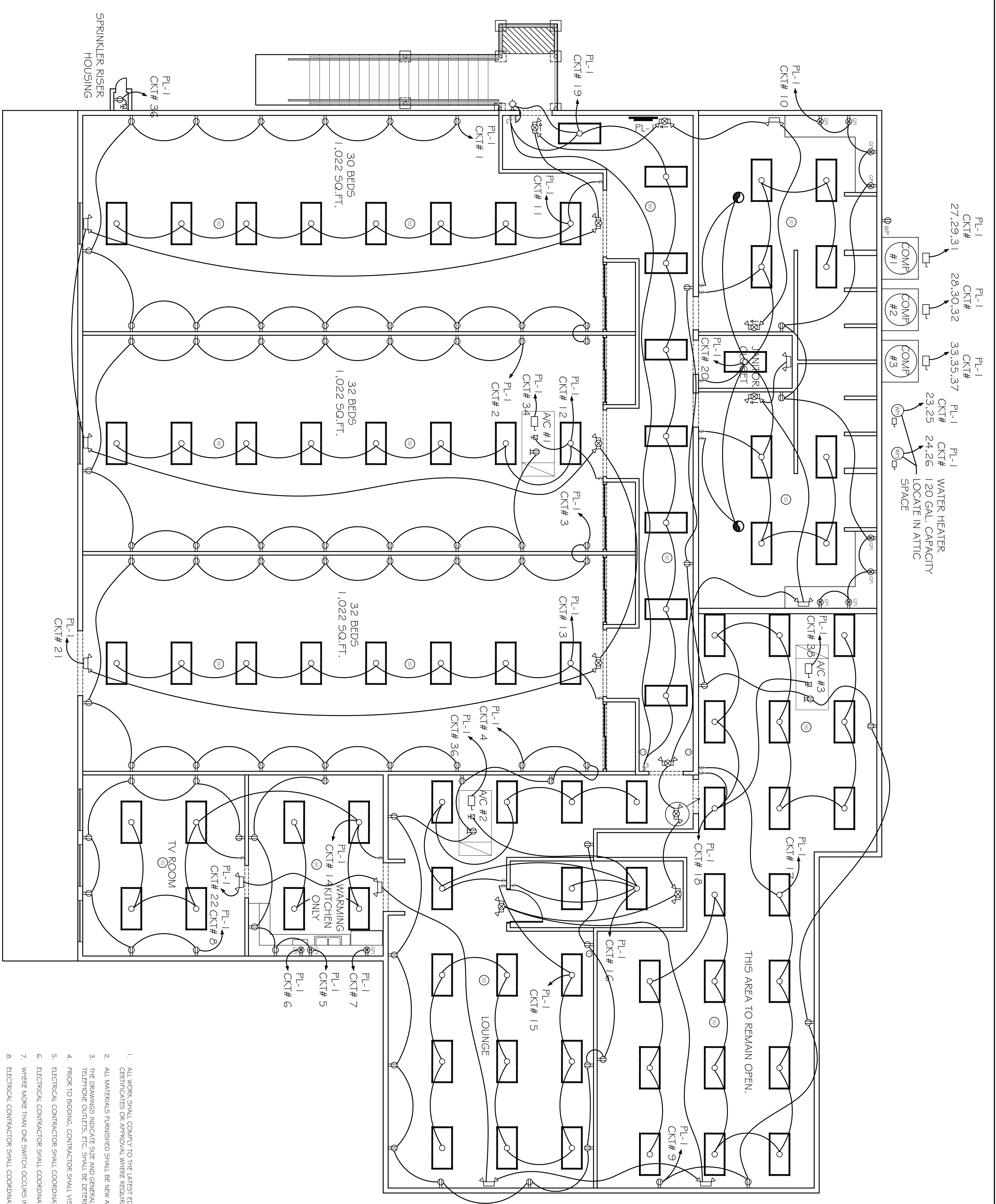
ELECTRICAL
PLAN

REV:

SCALE: AS NOTED
JOB#: 1795

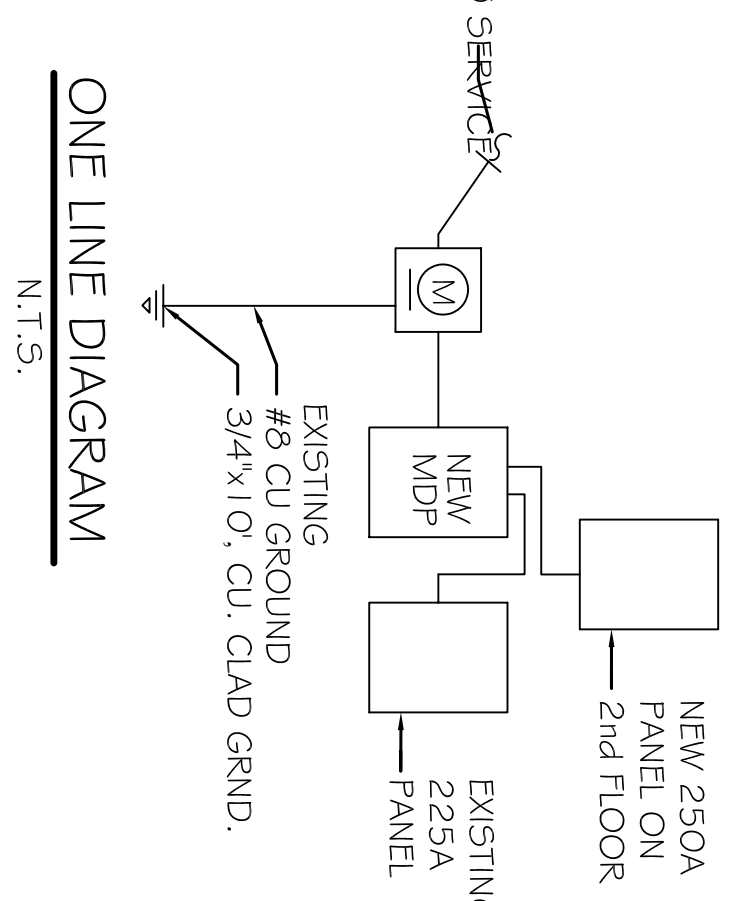
DATE: 6-17-08
SHEET 7

E-1



2nd FLOOR ELECTRICAL PLAN
SCALE: 3/16" = 1'-0"

- LEGEND**
- - 2x4" RECESSED FLUORESCENT LAMP, STEEL HOUSING, (BEARING THE UL LISTING MARK)
 - ⊕ - EMERGENCY / EXIT LIGHT WITH 90 MIN. BATTERY BACKUP
 - ⊕ - EMERGENCY LIGHT WITH 90 MIN. BATTERY BACKUP
 - ⊕ - MOUNTED LIGHT
 - ⊕ - LIGHT (VERIFY STYLE)
 - ⊕ - PULL-CHAIN LIGHT
 - ⊕ - SWITCH
 - ⊕ - 3-WAY SWITCH
 - ⊕ - SMOKE DETECTOR, U.L. #285
 - ⊕ - WIRED TO 110V CIRCUIT
 - ⊕ - 120V, 20A DUPLEX RECEPTACLE
 - ⊕ - 120V, 20A DUPLEX RECEPTACLE (WEATHER PROOF)
 - ⊕ - 240V, 30A DUPLEX RECEPTACLE
 - ⊕ - GFI RECEPTACLE
 - ⊕ - JUNCTION BOX
 - ⊕ - DISCONNECT
 - ⊕ - POWER PANEL
 - ⊕ - THERMOSTAT
 - ⊕ - WATER HEATER W/ DISCONNECT



PANEL: PL-1
ENCLOSURE: SURFACE MOUNTED W/COMPONENT GRIND BAR
FEDER SOURCE: CLECO
VOLTAGE: 120/208V, 3Ø, 4W 250 MAINS, 250A
ENCLOSURE: SURFACE MOUNTED W/COMPONENT GRIND BAR
SOURCE: D THE O&O LOAD CENTER

CT. NO.	LOAD DESCRIPTION	BREAKER AMP	POLE	LOAD (VA)	AC 80' CO (VA)	POLE	BREAKER AMP	LOAD DESCRIPTION	CT. NO.
1	SLEEPING BAY OUTLETS	20	1	1920	1920	1	20	SLEEPING BAY OUTLETS	2
3	SLEEPING BAY OUTLETS	20	1	1920	1920	1	20	SLEEPING BAY OUTLETS	4
5	WARMING KITCHEN GFI OUTLETS	20	1	1920	1920	1	20	WARMING KITCHEN GFI OUTLETS	6
7	REFRIGERATOR OUTLET	20	1	1920	1920	1	20	TV ROOM OUTLETS	8
9	CORRIDOR/OPEN AREA OUTLETS	20	1	1920	1920	1	20	BATHROOM GFI OUTLETS	10
11	FLUORESCENT LIGHTING	20	1	1560	1560	1	20	AC COMP. SERVICE OUTLET	12
13	FLUORESCENT LIGHTING	20	1	1560	1560	1	20	FLUORESCENT LIGHTING	14
15	FLUORESCENT LIGHTING	20	1	1560	1560	1	20	FLUORESCENT LIGHTING	16
17	FLUORESCENT LIGHTING	20	1	1560	1560	1	20	FLUORESCENT LIGHTING	18
19	FLUORESCENT LIGHTING	20	1	1560	1560	1	20	FLUORESCENT LIGHTING	20
21	EMERGENCY LIGHTING	20	1	1560	1560	1	20	EMERGENCY LIGHTING	22
23	WATER HEATER OUTLET	40	2	3600	3600	2	40	WATER HEATER OUTLET	24
25									26
27									28
29	AC #1 COMPRESSOR	50	3	4800	3600	3	40	AC #2 COMPRESSOR	30
31									32
33									34
35	AC #3 COMPRESSOR	40	3	3600	1920	1	20	AVU #1 DISC.	36
37									38
39	SPACE	20	1	0	1920	1	20	AVU #3 DISC.	40
41	SPACE	20	1	0	0	0	0	SPACE	42
				TOTAL CONNECTED LOAD (VA)	AG=18,960	BD=12,120	CD=14,160	GROUND BUS (GROUND WIRE (G))	

ELECTRICAL NOTES

- ALL WORK SHALL CONFORM TO THE LATEST EDITION OF THE NATIONAL ELECTRICAL CODE, THE GOVERNING ELECTRICAL CODE, AND ALL OTHER INSPECTION DEPARTMENTS HAVING JURISDICTION. OBTAIN CERTIFICATES OR APPROVAL WHERE REQUIRED.
- ALL MATERIALS FINISHED SHALL BE NEW AND SHALL BE U.L. LISTED.
- THE DRAWINGS INDICATE SIZE AND GENERAL LOCATION OF WORK. SCALE DIMENSIONS SHALL NOT BE USED. THE EXACT LOCATION AND ELEVATION OF ALL LIGHTING FIXTURES, RECEPTACLES, AND TELEPHONE OUTLETS, ETC. SHALL BE DETERMINED BY ACTUAL CONDITIONS IN THE FIELD, UNLESS OTHERWISE NOTED.
- PIECES TO BE BIDDING. CONTRACTOR SHALL VISIT THE JOB SITE AND FAMILIARIZE THEMSELVES WITH THE EXISTING CONDITIONS.
- ELECTRICAL CONTRACTOR SHALL COORDINATE HIS WORK WITH OTHER TRADES AND WITH OTHER CONTRACTORS WHOSE WORK MAY AFFECT THIS INSTALLATION.
- ELECTRICAL CONTRACTOR SHALL COORDINATE INCOMING ELECTRICAL SERVICE WITH UTILITY COMPANY AND INCLUDE IN HIS BID. ALL CHARGES AND FEES INCURRED IN MODIFICATIONS.
- WHERE MORE THAN ONE SWITCH OCCURS IN THE SAME LOCATION, THEY SHALL BE INSTALLED IN A GANG TYPE BOX UNDER ONE COVER PLATE.
- ELECTRICAL CONTRACTOR SHALL COORDINATE THE TELEPHONE INSTALLATION WITH THE TELEPHONE COMPANY AND THE GENERAL CONTRACTOR.
- ELECTRICAL CONTRACTOR, BEFORE INSTALLING AND OF THE WORK, SHALL SEE THAT IT DOES NOT INTERFERE WITH CLEARANCES REQUIRED FOR FINISHED COLUMNS, HUNG CEILING, PLASTER, PARTITIONS, WALLS, ETC. AS SHOWN IN THE ARCHITECTURAL DRAWINGS AND DETAILS. IF ANY WORK IS INSTALLED AND IT LATER DEVELOPS THAT SUCH DETAILS OR DESIGN CANNOT BE FOLLOWED, SHOW ON THE PLANS AND DETAILS.
- PERSONNEL TEST REQUIRED BY THE OWNER OR THE ENGINEER IN CONNECTION WITH THE OPERATION OF THE ELECTRICAL SYSTEM IN THE BUILDING.
- ALL TESTS SHALL BE MADE IN ACCORDANCE WITH THE LATEST STANDARD OF THE I.E.E.E. AND THE NATIONAL ELECTRICAL CODE.
- MINIMUM CONDUCTOR SIZE SHALL BE #12 GROUND INSULATION. MINIMUM SIZE CONDUIT SHALL BE 1/2" E.M.T. FOR INTERIOR USE, AND 1" RIGID ALUMINUM FOR EXTERIOR USE. LIST THE MAKE CABLE IN CONTROL ROOM BUILDING FOR LIGHTS AND RECEPTACLE CIRCUITS. INTERIOR FITTINGS SHALL BE CAST BOXES AND COVERS. INTERIOR FITTINGS SHALL BE CAST WHERE EXPOSED ON WALLS. STAMPED BOXES MAY BE USED ABOVE CEILING IN AIR CONDITIONED SPACES.
- CONTRACTOR SHALL INSTALL WIRING AND OTHER CIRCUIT COMPONENTS TO MATCH EQUIPMENT ACTUALLY INSTALLED.
- INSTALL GROUND FAULT RECEPTACLES AT RECEPTACLE LOCATIONS WITHIN 9' OF SINKS OR LAVABOIRS, AND AT EXTERIOR LOCATIONS. EXTERIOR RECEPTACLES SHALL ALSO BE WATERPROOF.
- BONDING AND GROUNDING SHALL BE IN ACCORDANCE WITH NFPA 70:250-259.
- FUSES SHALL BE TT CLASS 15, 250 VOLT, 200,000 AMP INTERRUPTING CAP.
- PROVIDE SERVICES OF A REFRIGERATE DETECTOR & ALARM CONTRACTOR TO DESIGN & INSTALL ALARM SYSTEM TO MEET REQUIREMENTS OF THE STATE FIRE MARSHAL.
- ALL ELECTRICAL, MECHANICAL, & PLUMBING PENETRATING THE WALLS SHALL BE FIRE CALLED. PENETRATIONS THROUGH STATED CONSTRUCTION SHALL BE SEALED WITH A MATERIAL CAPABLE OF PREVENTING THE PASSAGE OF FLAMES AND HOT GASES WHEN TESTED IN ACCORDANCE WITH ASTM E814.
- ALL JUNCTIONS FOR EXTERIOR SERVICE SHALL BE INSIDE BUILDING.