



STAINLESS STEEL
REGALINE SINKS
T9 SERIES



Item #: _____ *Qty #:* _____
Model #: _____
Project #: _____

FEATURES:

Tile edge for ease of installation.
 One piece **Deep Drawn** sink bowls with integral drainboards with splash.
 Featuring the single bowl unit design.
 All sink bowls have a large liberal 3" radius.
 Placement of the welded leg assembly ensures stability and furnishes direct support of the column load requirement for the entire sink unit.

CONSTRUCTION:

All TIG welded.
 Welded areas blended to match adjacent surfaces and to a satin finish.
 Gussets welded to a die-embossed reinforcing channel.

MATERIAL:

- 1 5/8" diameter galvanized legs and gussets.
 - 1" adjustable plastic bullet feet.
- Bowls are heavy gauge stainless steel type 304 series.
 Drainboards, splash and rolled rims are fabricated using heavy gauge stainless steel type 304 series.

DESCRIPTION

BOWL (SIZE)	Overall Length	# of Compartments	# of Drainboards	Recommended Use	MODEL #
16x20	62"	Three	None	DISH SINKS	T9-3-54
	**77"	Three	One		T9-3-54-18R or L
	91"	Three	Two		T9-3-54-18RL
	*110"	Four	Two		T9-4-72-18RL
20x20	29"	One	None	DISH & POT SINKS	T9-21-20
	81"	Two	Two		T9-22-40-18RL
	103"	Three	Two		T9-23-60-18RL
	115"	Three	Two		T9-23-60-24RLH (14" Deep Bowls)
18x24	109"	Three	Two	POT & PAN SINK	T9-63-54-24RL
20x28	103"	Three	Two	PAN SINK	T9-83-60-18RL

* Requires 2 Faucets

** Specify Drainboard Location



NEW YORK
 (800) 645-3166
 Fax: (631) 242-6900

GEORGIA
 (800) 832-1218
 Fax: (770) 775-5625

TEXAS
 (800) 527-0353
 Fax: (972) 932-4795

NEVADA
 (800) 446-8684
 Fax: (775) 972-1578

For Assistance with
 Smart Modifications & Accessories Call: >>

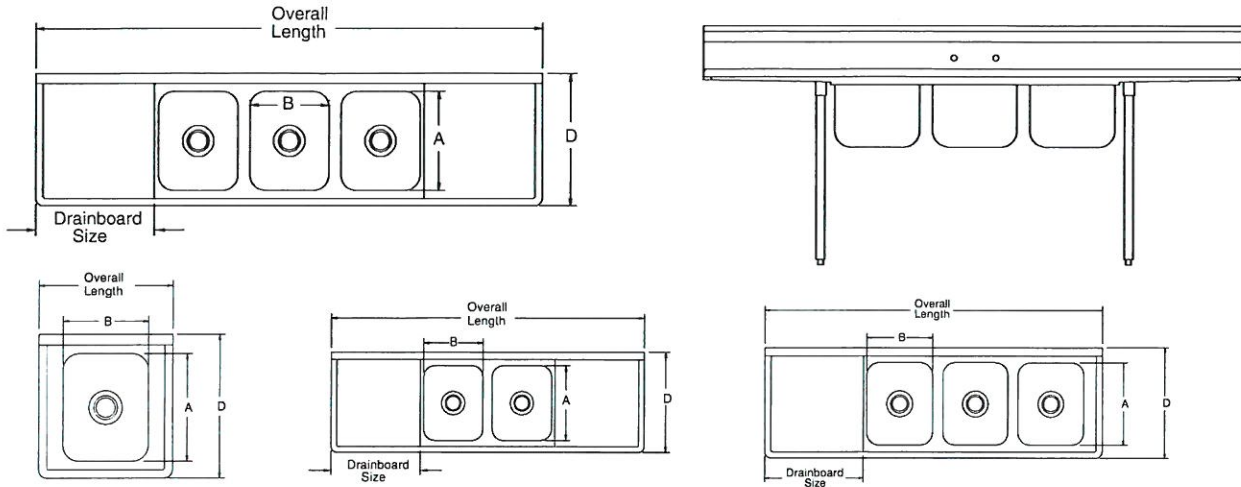
1-800-498-6634 Fax: 631-586-2933
 smartfab@advancetabco.com

DIMENSIONS and SPECIFICATIONS

12" Water Level Accommodates Pot & Dish Applications

TOL Overall: ± .500"
Interior: ± .250"

ALL DIMENSIONS ARE TYPICAL



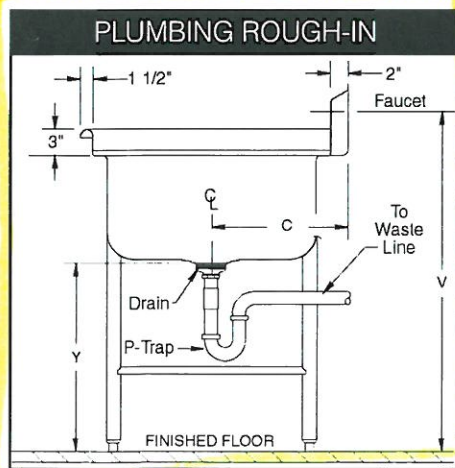
DESCRIPTION

BOWL (SIZE)	Overall Length	# of Compart.	# of Drainboards	DRBD (SIZE)	WT** (lbs)	Recommended Use	A	B	C	D	V	W	X	Y	Z
16x20	62"	Three	None	-	81	DISH SINKS	20"	16"	13 5/8"	27"	38"	8"	12"	22"	42"
	**77"	Three	One	18"	87										
	91"	Three	Two	18"	100										
	*110"	Four	Two	18"	185										
20x20	29"	One	None	-	52	DISH & POT SINKS	20"	20"	13 5/8"	27"	38"	8"	12"	22"	42"
	81"	Two	Two	18"	82										
	103"	Three	Two	18"	122										
	115"	Three	Two	24"	131										
18x24	109"	Three	Two	24"	125	POT & PAN SINK	24"	18"	15 5/8"	31"	38"	8"	12"	22"	42"
20x28	103"	Three	Two	18"	200	PAN SINK	28"	20"	17 5/8"	35"	38"	8"	12"	22"	42"

* Requires 2 Faucets

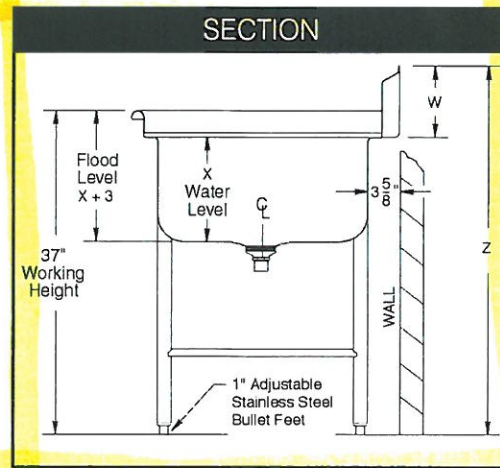
*** Specify Drainboard Location

** Approx. Shipping Weights



MECHANICAL:

- Supply is 1/2" IPS hot & cold.
- Faucet holes on 8" centers.
- Faucets are not included (see accessories).
- Waste drains are 1 1/2" IPS S/S basket type, located in center of sink bowl, and are included.



D-HB

Door-type
High Temperature
Dishwashing Machine with Booster Heater

Champion®

The Dishwashing Machine Specialists



QUICK FACTS

Capacities

Racks per hr. (NSF rated)	55
Wash tank US gal. (imp gal./liters)	9 (7.5/34)

Motor horsepower

1

Water consumption

Gal. per hr. (max. use) US gal. (imp gal./liters)	61 (51/231)
Gal. per rack US gal. (imp gal./liters)	1.1 (0.93/4.2)

Temperatures °F/°C

Wash	150/66
Rinse	180/82

Heating

Tank heat, electric, (kW)	4.7
Tank heat, steam (lbs./kg per hr. required at 15 psi/103.5 kPa flow pressure)	25/11.4
Electric booster (kW required for 40°F/22°C rise)	9
Electric booster (kW required for 70°F/39°C rise)	13
Steam booster (externally mounted) (lbs./kg per hr. required for 40°F/22°C rise)	50/23
Steam booster (externally mounted) (lbs./kg per hr. required for 70°F/39°C rise)	65/29

Time cycle in seconds

Wash	40
Dwell	10
Rinse	10
Total cycle	60

Saves Space, Energy and Water!

D-HB makes dishes, glasses, silverware and utensils shine in only one minute.

Space-saving Built-in Electric Booster

Compact D-HB provides fresh 180°F/82°C rinse water without expensive external equipment.

Simple, Fully-automatic Operation

Flip one switch to fill and heat the wash tank and turn on the booster heater. Then, one pushbutton washes rack after rack of sparkling clean ware. An automatic electrically operated drain valve ensures drain is properly sealed.

Straight-through or Corner Model Configuration

The balanced door lift system and track arrangement allow for quick, easy rack loading. The D-HB comes in straight-through or corner operation.

Superior, Soil-stripping Wash

Improved wash arms provide 50 percent greater cleaning power. The latest-design spray pattern penetrates every surface yet protects delicate ware.

Save on Water and Detergent

Recirculating wash is replenished by final rinse, so only 1.1 US gallons (0.93 imperial gals., 4.2 liters) of fresh water and less detergent are needed to process one rack.

Standard Features

- Automatic tank fill
- Built-in stainless steel electric booster (internal or external steam booster optional)
- Automatic electric drain valve
- Corner model available (contact factory)
- Electric tank heat (4.7 kW)
- Balanced door lift system
- Low-water tank heat protection
- 1 Hp drip-proof pump motor
- Door safety switches
- Top-mounted, splash-proof control console
- Interchangeable upper and lower spray arms
- Stainless steel pump impeller
- Stainless steel front and side panels
- Detergent/chemical connection provisions
- Water pressure regulating valve (mounted)
- Single point electrical connection (see chart)

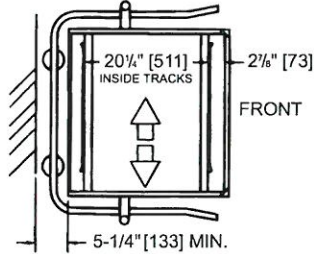
D-HB

Door-type
High Temperature
Dishwashing Machine with Booster Heater

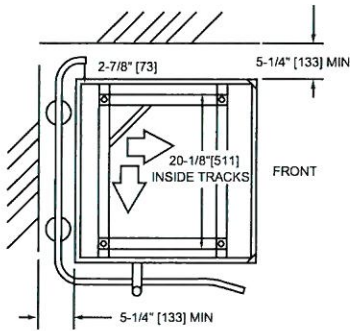
Champion®

The Dishwashing Machine Specialists

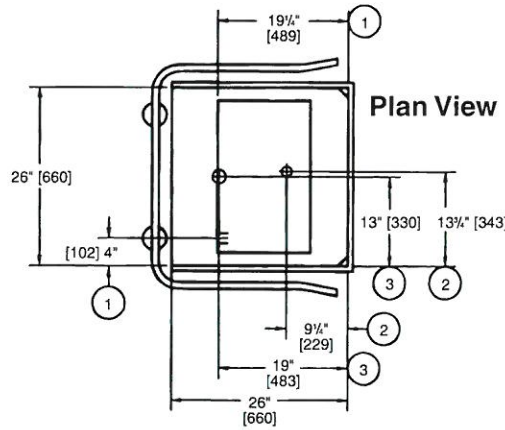
Dimensions shown in inches and [millimeters]



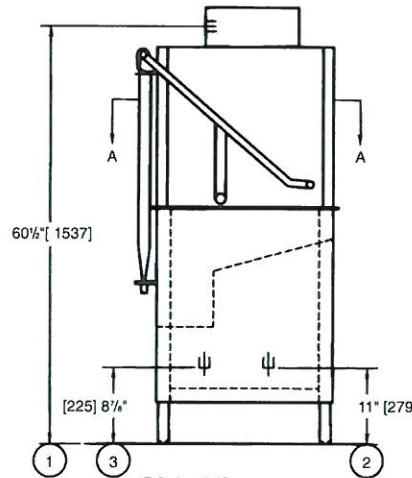
Straight-through Configuration



Corner Configuration



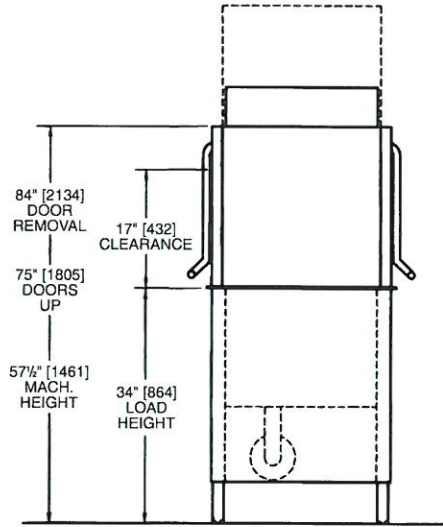
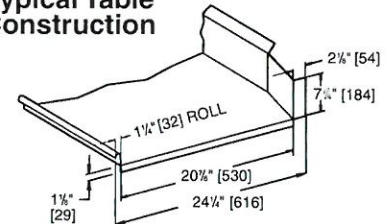
Plan View



Side View

Length between table connections: 26"/660 mm
Volume crated: 46 cu. ft./1.3 cu. m
Shipping weight crated: 350 lbs./160 kg

Typical Table Construction



Front View

Utilities	
1	Electrical: (See Box)
2	Hot water: 3/4" NPT 110°F/48°C - 140°F/60°C hot water connection. Flow pressure 20-22 psi. (138-151 kPa).
3	Drain: 2" O.D. connection. Max. flow rate 15 US gpm. (12 imp. gpm/54 lpm.)

Warning:

Plumbing and electrical connection should be made by qualified personnel who will observe all the applicable plumbing, sanitary and safety codes and the National Electrical Code.

Note:

Water Hammer Arrestor (meeting ASSE-1010 standard or equivalent) to be supplied (by others) in common water supply line at service connection.



For Steam booster Connections, Contact Factory.

For Electrical Heat

D-HB with 40°F/22°C Rise Booster			
Elec. Specs	Rated Amps	Minimum Supply Ckt. Conductor Ampacity	Maximum Overcurrent Protective Device
208/60/1	71	75	75
240/60/1	79	90	90
208/60/3	40	50	50
240/60/3	45	50	50
480/60/3	20	25	25
575/60/3	16	20	20

For Electrical Heat

D-HB with 70°F/39°C Rise Booster			
Elec. Specs	Rated Amps	Minimum Supply Ckt. Conductor Ampacity	Maximum Overcurrent Protective Device
208/60/3	57	60	60
240/60/3	64	70	70
480/60/3	29	35	35
575/60/3	25	30	30

For Steam Heat

D-HB with 40°F/22°C or 70°F/39°C Rise Booster			
Elec. Specs	Rated Amps	Minimum Supply Ckt. Conductor Ampacity	Maximum Overcurrent Protective Device
208/60/1	13	15	15
240/60/1	12	15	15
208/60/3	6	15	15
240/60/3	6	15	15
480/60/3	3	15	15
575/60/3	3	15	15

Due to an ongoing value analysis program at Champion, specifications in this catalog are subject to change without notice.

Champion Industries, Inc., P. O. Box 4149, Winston-Salem, NC 27115 • 336/661-1556 • Fax: 336/661-1979 • www.championindustries.com