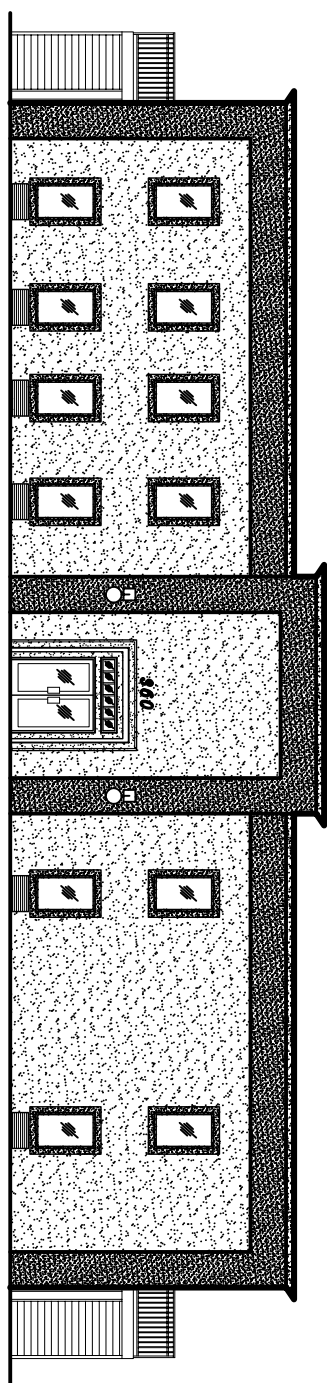


ALDERSGATE UNITED METHODIST SUNDAY SCHOOL / GYMNASIUM 360 ROBERT ROAD SLIDELL, LOUISIANA

SPRINKLED



INTERNATIONAL BUILDING CODE 2006 REQUIREMENTS

- OCCUPANCY CLASSIFICATION:**
ASSEMBLY GROUP A-3 (SEC 303)
- TOTAL BLDG. SQ. FT. = 9,499**
- OCCUPANT LOAD:** (INTL 1004.1.1)
ASSESSMENT USE, LESS CONCENTRATED, WITHOUT FIXED SEATING IS: (A) 14.83 / 292.4 PERSONS
- FIRE AREA 2:**
CLASSROOM ASSEMBLY USE, CONCENTRATED / NET 11791.4258.8 PERSONS
- EXIT ACCESS TRAVEL DISTANCE:** (SEC 1016.1)
OCCUPANCY A, UNSPRINKLED SYSTEM = 200 FEET
- CONSTRUCTION CLASSIFICATION:** (SEC 602.5)
TYPE II-B
- ALLOWABLE HEIGHT AND BLDG. AREA:** (TR 503)
ASSEMBLY GROUP A-3 ALLOWABLE 2 STORIES 9600 SQ. FT.
- FIRE RESISTANCE RATING REQUIREMENTS FOR BLDG. ELEMENTS:** (TR 601)
BEARING WALLS - EXTERIOR - 0 HRS
NON-BEARING WALLS - 0 HRS
FLOOR CONSTRUCTION - 0 HRS
ROOF CONSTRUCTION - 0 HRS
- FIRE RESISTANCE RATING REQUIREMENTS FOR EXTERIOR WALLS:** (TR 602)
EXTERIOR WALLS WITH 30" FIRE SEPARATION DISTANCE = 0 HRS
- MAX. AREA OF EXTERIOR WALL OPENINGS:** (TR 704.8)
BLDG. WITH 30" FIRE SEPARATION DISTANCE ALLOWED UNLIMITED PROTECTED AND UNPROTECTED OPENINGS
- FIRE PROTECTION SYSTEM REQUIREMENTS:** (SEC 907)
THIS BLDG. SHALL BE PROVIDED WITH AN APPROVED FIRE PROTECTION SYSTEM IN ACCORDANCE WITH SEC 907.2.1
- CONSTRUCTION OCCUPANCY:** (SEC 1609)
THIS BLDG. SHALL BE DESIGNED IN ACCORDANCE WITH IBC, SECTION 1609 AND ASCE 7.05 USING METHOD 2 AS A FULLY ENCLOSED BLDG. USING THE FOLLOWING INFORMATION:
BASIC WIND SPEED @ SECOND GUSTS - 130 MPH (FIG 1609)
CATEGORY II BLDG.
IMPORTANCE FACTOR: I = 1.15 (TR 1604.5)
EXPOSURE B, DETERMINATION OF WIND LOADS SHALL BE IN ACCORDANCE WITH IBC SEC 1609.6 (SEC 1609.4)
GROUND SNOW LOADS = 5 PSF (TR 1608.2)

- MINIMUM FLOOR & ROOF LIVE LOADS (SEC 1607.1)**
- 1ST FLOOR - GYMNASIUMS, MAIN FLOORS & BALCONIES: 100 PSF
- CORRIDORS: 60 PSF
- CONCRETE CLASS FLOORS: 40 PSF
- 1ST FLOOR CORRIDORS: 100 PSF
- 2ND FLOOR CORRIDORS: 100 PSF
- ROOF LOADS 300 LB (CONCENTRATED)
- ROOF LOADS 20 PSF (LIVE LOAD)

PROTECTION OF OPENINGS FOR WINDBORNE DEBRIS:
ALL GLAZING WILL HAVE APPROPRIATE SIZE WOOD STRUCTURAL PANELS WITH A MINIMUM THICKNESS OF 7/16 INCH, AND A MAXIMUM PANEL SPAN OF THREE FEET. PANELS WILL BE PERFECT AND STORED SO THAT THEY SHALL BE EASY TO ATTACH TO THE FRAMING SURROUNDING THE HORIZONTAL AND VERTICAL PRESSURES STATED ON THIS PAGE OR BY OTHER APPROVED METHOD BELOW.

WINDBORNE DEBRIS PROTECTION FASTENING SCHEDULE FOR WOOD STRUCTURAL PANELS	
WIND SPEED (MPH)	FASTENING SCHEDULE
70-95	1/2" x 6" @ 12" ON CENTER
95-110	1/2" x 6" @ 12" ON CENTER
110-130	1/2" x 6" @ 12" ON CENTER
130-150	1/2" x 6" @ 12" ON CENTER
150-170	1/2" x 6" @ 12" ON CENTER
170-190	1/2" x 6" @ 12" ON CENTER
190-210	1/2" x 6" @ 12" ON CENTER
210-230	1/2" x 6" @ 12" ON CENTER
230-250	1/2" x 6" @ 12" ON CENTER
250-270	1/2" x 6" @ 12" ON CENTER
270-290	1/2" x 6" @ 12" ON CENTER
290-310	1/2" x 6" @ 12" ON CENTER
310-330	1/2" x 6" @ 12" ON CENTER
330-350	1/2" x 6" @ 12" ON CENTER
350-370	1/2" x 6" @ 12" ON CENTER
370-390	1/2" x 6" @ 12" ON CENTER
390-410	1/2" x 6" @ 12" ON CENTER
410-430	1/2" x 6" @ 12" ON CENTER
430-450	1/2" x 6" @ 12" ON CENTER
450-470	1/2" x 6" @ 12" ON CENTER
470-490	1/2" x 6" @ 12" ON CENTER
490-510	1/2" x 6" @ 12" ON CENTER
510-530	1/2" x 6" @ 12" ON CENTER
530-550	1/2" x 6" @ 12" ON CENTER
550-570	1/2" x 6" @ 12" ON CENTER
570-590	1/2" x 6" @ 12" ON CENTER
590-610	1/2" x 6" @ 12" ON CENTER
610-630	1/2" x 6" @ 12" ON CENTER
630-650	1/2" x 6" @ 12" ON CENTER
650-670	1/2" x 6" @ 12" ON CENTER
670-690	1/2" x 6" @ 12" ON CENTER
690-710	1/2" x 6" @ 12" ON CENTER
710-730	1/2" x 6" @ 12" ON CENTER
730-750	1/2" x 6" @ 12" ON CENTER
750-770	1/2" x 6" @ 12" ON CENTER
770-790	1/2" x 6" @ 12" ON CENTER
790-810	1/2" x 6" @ 12" ON CENTER
810-830	1/2" x 6" @ 12" ON CENTER
830-850	1/2" x 6" @ 12" ON CENTER
850-870	1/2" x 6" @ 12" ON CENTER
870-890	1/2" x 6" @ 12" ON CENTER
890-910	1/2" x 6" @ 12" ON CENTER
910-930	1/2" x 6" @ 12" ON CENTER
930-950	1/2" x 6" @ 12" ON CENTER
950-970	1/2" x 6" @ 12" ON CENTER
970-990	1/2" x 6" @ 12" ON CENTER
990-1010	1/2" x 6" @ 12" ON CENTER
1010-1030	1/2" x 6" @ 12" ON CENTER
1030-1050	1/2" x 6" @ 12" ON CENTER
1050-1070	1/2" x 6" @ 12" ON CENTER
1070-1090	1/2" x 6" @ 12" ON CENTER
1090-1110	1/2" x 6" @ 12" ON CENTER
1110-1130	1/2" x 6" @ 12" ON CENTER
1130-1150	1/2" x 6" @ 12" ON CENTER
1150-1170	1/2" x 6" @ 12" ON CENTER
1170-1190	1/2" x 6" @ 12" ON CENTER
1190-1210	1/2" x 6" @ 12" ON CENTER
1210-1230	1/2" x 6" @ 12" ON CENTER
1230-1250	1/2" x 6" @ 12" ON CENTER
1250-1270	1/2" x 6" @ 12" ON CENTER
1270-1290	1/2" x 6" @ 12" ON CENTER
1290-1310	1/2" x 6" @ 12" ON CENTER
1310-1330	1/2" x 6" @ 12" ON CENTER
1330-1350	1/2" x 6" @ 12" ON CENTER
1350-1370	1/2" x 6" @ 12" ON CENTER
1370-1390	1/2" x 6" @ 12" ON CENTER
1390-1410	1/2" x 6" @ 12" ON CENTER
1410-1430	1/2" x 6" @ 12" ON CENTER
1430-1450	1/2" x 6" @ 12" ON CENTER
1450-1470	1/2" x 6" @ 12" ON CENTER
1470-1490	1/2" x 6" @ 12" ON CENTER
1490-1510	1/2" x 6" @ 12" ON CENTER
1510-1530	1/2" x 6" @ 12" ON CENTER
1530-1550	1/2" x 6" @ 12" ON CENTER
1550-1570	1/2" x 6" @ 12" ON CENTER
1570-1590	1/2" x 6" @ 12" ON CENTER
1590-1610	1/2" x 6" @ 12" ON CENTER
1610-1630	1/2" x 6" @ 12" ON CENTER
1630-1650	1/2" x 6" @ 12" ON CENTER
1650-1670	1/2" x 6" @ 12" ON CENTER
1670-1690	1/2" x 6" @ 12" ON CENTER
1690-1710	1/2" x 6" @ 12" ON CENTER
1710-1730	1/2" x 6" @ 12" ON CENTER
1730-1750	1/2" x 6" @ 12" ON CENTER
1750-1770	1/2" x 6" @ 12" ON CENTER
1770-1790	1/2" x 6" @ 12" ON CENTER
1790-1810	1/2" x 6" @ 12" ON CENTER
1810-1830	1/2" x 6" @ 12" ON CENTER
1830-1850	1/2" x 6" @ 12" ON CENTER
1850-1870	1/2" x 6" @ 12" ON CENTER
1870-1890	1/2" x 6" @ 12" ON CENTER
1890-1910	1/2" x 6" @ 12" ON CENTER
1910-1930	1/2" x 6" @ 12" ON CENTER
1930-1950	1/2" x 6" @ 12" ON CENTER
1950-1970	1/2" x 6" @ 12" ON CENTER
1970-1990	1/2" x 6" @ 12" ON CENTER
1990-2010	1/2" x 6" @ 12" ON CENTER
2010-2030	1/2" x 6" @ 12" ON CENTER
2030-2050	1/2" x 6" @ 12" ON CENTER
2050-2070	1/2" x 6" @ 12" ON CENTER
2070-2090	1/2" x 6" @ 12" ON CENTER
2090-2110	1/2" x 6" @ 12" ON CENTER
2110-2130	1/2" x 6" @ 12" ON CENTER
2130-2150	1/2" x 6" @ 12" ON CENTER
2150-2170	1/2" x 6" @ 12" ON CENTER
2170-2190	1/2" x 6" @ 12" ON CENTER
2190-2210	1/2" x 6" @ 12" ON CENTER
2210-2230	1/2" x 6" @ 12" ON CENTER
2230-2250	1/2" x 6" @ 12" ON CENTER
2250-2270	1/2" x 6" @ 12" ON CENTER
2270-2290	1/2" x 6" @ 12" ON CENTER
2290-2310	1/2" x 6" @ 12" ON CENTER
2310-2330	1/2" x 6" @ 12" ON CENTER
2330-2350	1/2" x 6" @ 12" ON CENTER
2350-2370	1/2" x 6" @ 12" ON CENTER
2370-2390	1/2" x 6" @ 12" ON CENTER
2390-2410	1/2" x 6" @ 12" ON CENTER
2410-2430	1/2" x 6" @ 12" ON CENTER
2430-2450	1/2" x 6" @ 12" ON CENTER
2450-2470	1/2" x 6" @ 12" ON CENTER
2470-2490	1/2" x 6" @ 12" ON CENTER
2490-2510	1/2" x 6" @ 12" ON CENTER
2510-2530	1/2" x 6" @ 12" ON CENTER
2530-2550	1/2" x 6" @ 12" ON CENTER
2550-2570	1/2" x 6" @ 12" ON CENTER
2570-2590	1/2" x 6" @ 12" ON CENTER
2590-2610	1/2" x 6" @ 12" ON CENTER
2610-2630	1/2" x 6" @ 12" ON CENTER
2630-2650	1/2" x 6" @ 12" ON CENTER
2650-2670	1/2" x 6" @ 12" ON CENTER
2670-2690	1/2" x 6" @ 12" ON CENTER
2690-2710	1/2" x 6" @ 12" ON CENTER
2710-2730	1/2" x 6" @ 12" ON CENTER
2730-2750	1/2" x 6" @ 12" ON CENTER
2750-2770	1/2" x 6" @ 12" ON CENTER
2770-2790	1/2" x 6" @ 12" ON CENTER
2790-2810	1/2" x 6" @ 12" ON CENTER
2810-2830	1/2" x 6" @ 12" ON CENTER
2830-2850	1/2" x 6" @ 12" ON CENTER
2850-2870	1/2" x 6" @ 12" ON CENTER
2870-2890	1/2" x 6" @ 12" ON CENTER
2890-2910	1/2" x 6" @ 12" ON CENTER
2910-2930	1/2" x 6" @ 12" ON CENTER
2930-2950	1/2" x 6" @ 12" ON CENTER
2950-2970	1/2" x 6" @ 12" ON CENTER
2970-2990	1/2" x 6" @ 12" ON CENTER
2990-3010	1/2" x 6" @ 12" ON CENTER
3010-3030	1/2" x 6" @ 12" ON CENTER
3030-3050	1/2" x 6" @ 12" ON CENTER
3050-3070	1/2" x 6" @ 12" ON CENTER
3070-3090	1/2" x 6" @ 12" ON CENTER
3090-3110	1/2" x 6" @ 12" ON CENTER
3110-3130	1/2" x 6" @ 12" ON CENTER
3130-3150	1/2" x 6" @ 12" ON CENTER
3150-3170	1/2" x 6" @ 12" ON CENTER
3170-3190	1/2" x 6" @ 12" ON CENTER
3190-3210	1/2" x 6" @ 12" ON CENTER
3210-3230	1/2" x 6" @ 12" ON CENTER
3230-3250	1/2" x 6" @ 12" ON CENTER
3250-3270	1/2" x 6" @ 12" ON CENTER
3270-3290	1/2" x 6" @ 12" ON CENTER
3290-3310	1/2" x 6" @ 12" ON CENTER
3310-3330	1/2" x 6" @ 12" ON CENTER
3330-3350	1/2" x 6" @ 12" ON CENTER
3350-3370	1/2" x 6" @ 12" ON CENTER
3370-3390	1/2" x 6" @ 12" ON CENTER
3390-3410	1/2" x 6" @ 12" ON CENTER
3410-3430	1/2" x 6" @ 12" ON CENTER
3430-3450	1/2" x 6" @ 12" ON CENTER
3450-3470	1/2" x 6" @ 12" ON CENTER
3470-3490	1/2" x 6" @ 12" ON CENTER
3490-3510	1/2" x 6" @ 12" ON CENTER
3510-3530	1/2" x 6" @ 12" ON CENTER
3530-3550	1/2" x 6" @ 12" ON CENTER
3550-3570	1/2" x 6" @ 12" ON CENTER
3570-3590	1/2" x 6" @ 12" ON CENTER
3590-3610	1/2" x 6" @ 12" ON CENTER
3610-3630	1/2" x 6" @ 12" ON CENTER
3630-3650	1/2" x 6" @ 12" ON CENTER
3650-3670	1/2" x 6" @ 12" ON CENTER
3670-3690	1/2" x 6" @ 12" ON CENTER
3690-3710	1/2" x 6" @ 12" ON CENTER
3710-3730	1/2" x 6" @ 12" ON CENTER
3730-3750	1/2" x 6" @ 12" ON CENTER
3750-3770	1/2" x 6" @ 12" ON CENTER
3770-3790	1/2" x 6" @ 12" ON CENTER
3790-3810	1/2" x 6" @ 12" ON CENTER
3810-3830	1/2" x 6" @ 12" ON CENTER
3830-3850	1/2" x 6" @ 12" ON CENTER
3850-3870	1/2" x 6" @ 12" ON CENTER
3870-3890	1/2" x 6" @ 12" ON CENTER
3890-3910	1/2" x 6" @ 12" ON CENTER
3910-3930	1/2" x 6" @ 12" ON CENTER
3930-3950	1/2" x 6" @ 12" ON CENTER
3950-3970	1/2" x 6" @ 12" ON CENTER
3970-3990	1/2" x 6" @ 12" ON CENTER
3990-4010	1/2" x 6" @ 12" ON CENTER
4010-4030	1/2" x 6" @ 12" ON CENTER
4030-4050	1/2" x 6" @ 12" ON CENTER
4050-4070	1/2" x 6" @ 12" ON CENTER
4070-4090	1/2" x 6" @ 12" ON CENTER
4090-4110	1/2" x 6" @ 12" ON CENTER
4110-4130	1/2" x 6" @ 12" ON CENTER
4130-4150	1/2" x 6" @ 12" ON CENTER
4150-4170	1/2" x 6" @ 12" ON CENTER
4170-4190	1/2" x 6" @ 12" ON CENTER
4190-4210	1/2" x 6" @ 12" ON CENTER
4210-4230	1/2" x 6" @ 12" ON CENTER
4230-4250	1/2" x 6" @ 12" ON CENTER
4250-4270	1/2" x 6" @ 12" ON CENTER
4270-4290	1/2" x 6" @ 12" ON CENTER
4290-4310	1/2" x 6" @ 12" ON CENTER
4310-4330	1/2" x 6" @ 12" ON CENTER
4330-4350	1/2" x 6" @ 12" ON CENTER
4350-4370	1/2" x 6" @ 12" ON CENTER
4370-4390	1/2" x 6" @ 12" ON CENTER
4390-4410	1/2" x 6" @ 12" ON CENTER
4410-4430	1/2" x 6" @ 12" ON CENTER
4430-4450	1/2" x 6" @ 12" ON CENTER
4450-4470	1/2" x 6" @ 12" ON CENTER
4470-4490	1/2" x 6" @ 12" ON CENTER
4490-4510	1/2" x 6" @ 12" ON CENTER
4510-4530	1/2" x 6" @ 12" ON CENTER
4530-4550	1/2" x 6" @ 12" ON CENTER
4550-4570	1/2" x 6" @ 12" ON CENTER
4570-4590	1/2" x 6" @ 12" ON CENTER
4590-4610	1/2" x 6" @ 12" ON CENTER
4610-4630	1/2" x 6" @ 12" ON CENTER
4630-4650	1/2" x 6" @ 12" ON CENTER
4650-4670	1/2" x 6" @ 12" ON CENTER
4670-4690	1/2" x 6" @ 12" ON CENTER
4690-4710	1/2" x 6" @ 12" ON CENTER
4710-4730	1/2" x 6" @ 12" ON CENTER
4730-4750	1/2" x 6" @ 12" ON CENTER
4750-4770	1/2" x 6" @ 12" ON CENTER
4770-4790	1/2" x 6" @ 12" ON CENTER
4790-4810	1/2" x 6" @ 12" ON CENTER
4810-4830	1/2" x 6" @ 12" ON CENTER
4830-4850	1/2" x 6" @ 12" ON CENTER
4850-4870	1/2" x 6" @ 12" ON CENTER
4870-4890	1/2" x 6" @ 12" ON CENTER
4890-4910	1/2" x 6" @ 12" ON CENTER
4910-4930	1/2" x 6" @ 12" ON CENTER
4930-4950	1/2" x 6" @ 12" ON CENTER
4950-4970	1/2" x 6" @ 12" ON CENTER
4970-4990	1/2" x 6" @ 12" ON CENTER
4990-5010	1/2" x 6" @ 12" ON CENTER
5010-5030	1/2" x 6" @ 12" ON CENTER
5030-5050	1/2" x 6" @ 12" ON CENTER
5050-5070	1/2" x 6" @ 12" ON CENTER
5070-5090	1/2" x 6" @ 12" ON CENTER
5090-5110	1/2" x 6" @ 12" ON CENTER
5110-5130	1/2" x 6" @ 12" ON CENTER
5130-5150	1/2" x 6" @ 12" ON CENTER