

P-TAC UNIT SCHEDULE

NO.	TOTAL BTU	CFM	O.A. FRESH AIR	HEAT EXCHANGER	ENERGY EFFICIENCY RATIO	COMMENTS
1	15,000	8,000	800	NO	0.85	GYMNASIUM
2	15,000	8,000	800	NO	0.85	GYMNASIUM
3	15,000	8,000	800	NO	0.85	CLASS RM CORRIDOR
4	15,000	8,000	800	NO	0.85	KITCHEN
5	15,000	8,000	800	NO	0.85	FRESH-AIR CLASSRM
6	15,000	8,000	800	NO	0.85	RESTROOMS

EXHAUST FAN SCHEDULE

LOC.	CFM	VOLTAGE	TYPE	MANF.
1/2, 3, 4, 5, 6	11,000	208	4	209/2/3
7, 8, 9, 10, 11, 12, 13, 14, 15, 16, 17, 18, 19	200	120	2	201/3

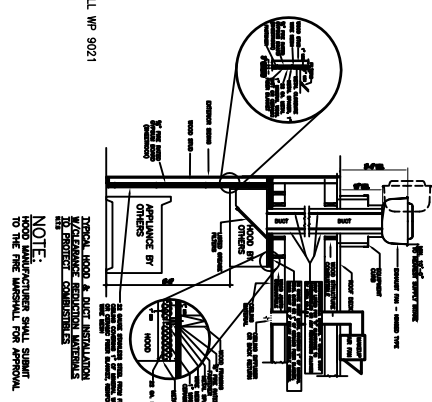
P-TAC CLASSROOM A/C UNIT SCHEDULE

NO.	TOTAL BTU	CFM	O.A. FRESH AIR	HEAT EXCHANGER	ENERGY EFFICIENCY RATIO	COMMENTS
1, 2, 3, 4, 5, 6	14,000	7,500	750	NO	0.85	FRESH-AIR
7, 8, 9, 10, 11, 12, 13, 14, 15, 16, 17, 18, 19	11,000	6,000	600	NO	0.85	RESTROOMS

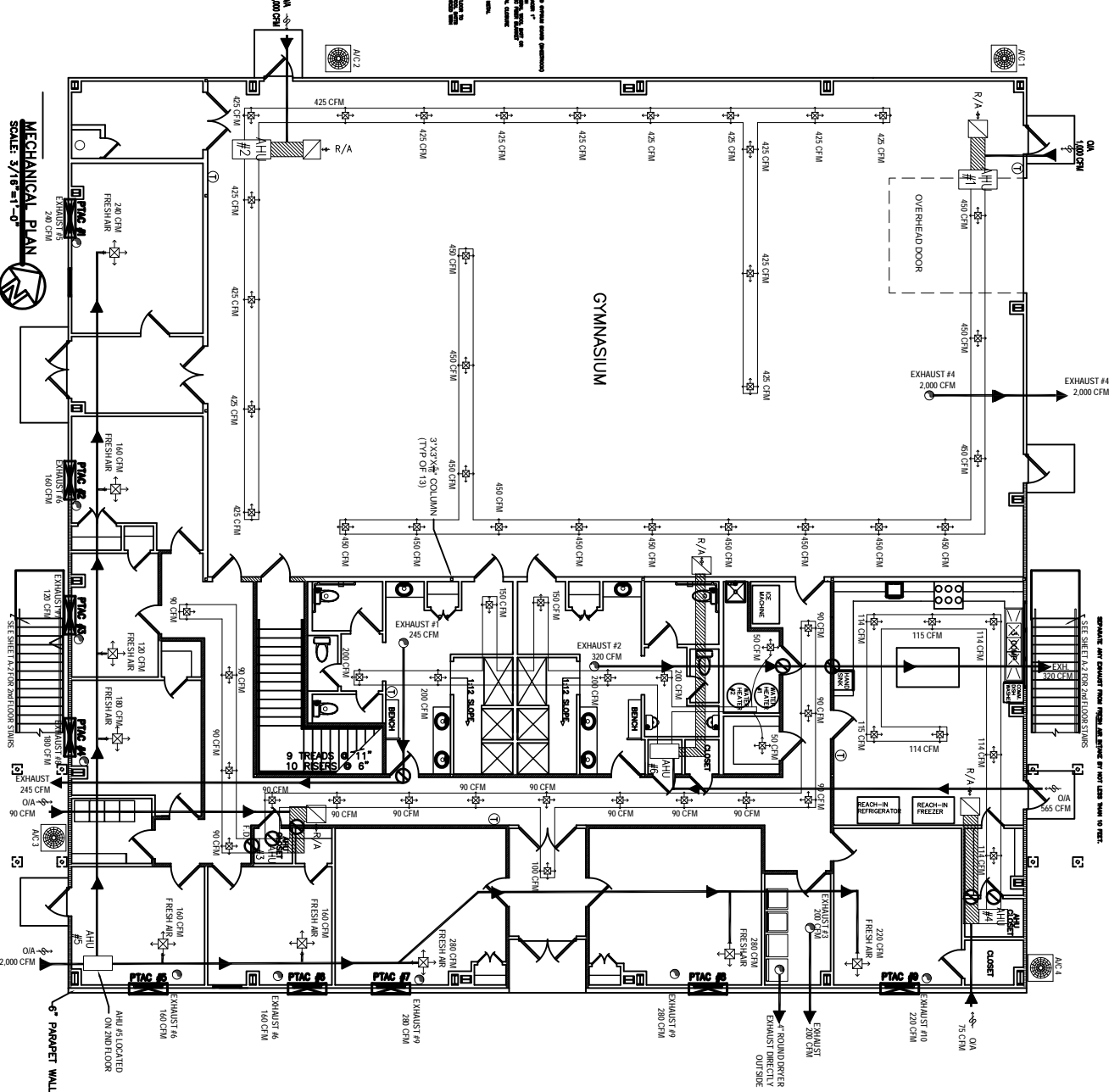
1. CONCEALED DUCTWORK TO BE 01-381 CLASS 1 FIBERGLASS DUCTBOARD. DUCTS SHALL BE SIZED ACCORDING TO THE FOLLOWING: 1.000 CFM/KW. SECONDARY DUCTS TO 800 CFM. TO BE INSTALLED PER SMACNA STANDARDS.
2. EXPOSED DUCTWORK TO BE GALVANIZED SHEET METAL PER SMACNA STANDARDS. LINE WITH NEOPRENE COATED 1.0" 1.5 POUNDS PER CU. FT. FOOT DUCT INSULATION.
3. ROUND FLEXIBLE DUCT TO BE UL-181 CLASS 1 AIR DUCT MATERIALS.
4. INSTALL SYSTEMS OVER 2000 CFM AND LESS THAN 15.0 CM. SNOW DETECTORS SHALL BE INSTALLED IN ACCORDANCE WITH NFPA 72 IN THE RETURN DUCT DOWNSTREAM OF THE AIR HANDLING UNIT AND ALL FILTERS IN RETURN AIR OF EACH SYSTEM UNDER 2000 CFM TO SHUT DOWN UNIT AND ALL FILTERS IN RETURN AIR OF EACH SYSTEM UNDER 2000 CFM TO SHUT DOWN UNIT AND ALL FILTERS IN RETURN AIR OF EACH SYSTEM UNDER 2000 CFM TO SHUT DOWN UNIT.
5. PROVIDE UL RATED FIRE DAMPERS WHERE REQUIRED AT ALL DUCT PENETRATIONS OF FIRE RATED ASSEMBLIES AND WHERE REQUIRED BY CODE INCLUDING OUTSIDE AIR INTAKES.
6. CONDENSATE DRAINS TO BE PVC PIPE RUN TO PLUMBERS-P TRAP WITHIN FIVE FEET OF AIR HANDLING UNITS. SYSTEMS TO BE BALANCED TO ASSURE PROPER AIR FLOWS PER IAS.
7. PROVIDE UL RATED FIRE DAMPERS WHERE REQUIRED AT ALL DUCT PENETRATIONS OF FIRE RATED ASSEMBLIES AND WHERE REQUIRED BY CODE INCLUDING OUTSIDE AIR INTAKES.
8. CONDENSATE DRAINS TO BE PVC PIPE RUN TO PLUMBERS-P TRAP WITHIN FIVE FEET OF AIR HANDLING UNITS. SYSTEMS TO BE BALANCED TO ASSURE PROPER AIR FLOWS PER IAS.
9. REFRIGERANT LINES SHALL BE SIZED BY UNIT MANUFACTURER AND INSTALLED ACCORDING TO MANUFACTURER'S INSTALLATION INSTRUCTIONS.
10. REFRIGERANT LINES SHALL BE SIZED BY UNIT MANUFACTURER AND INSTALLED ACCORDING TO MANUFACTURER'S INSTALLATION INSTRUCTIONS.
11. ALL ELECTRICAL MECHANICAL AND PLUMBING PENETRATIONS THROUGH CEILING SHALL BE FIRE RATED WITH A CONTROL DAMPER.
12. INSTALL FIRE DAMPER WHERE S.A. RA DUCTS PENETRATE HOUR RATED CEILING.
13. ALL ELECTRICAL MECHANICAL AND PLUMBING PENETRATIONS THROUGH WALLS SHALL BE FIRE RATED WITH A CONTROL DAMPER.
14. PROVIDE 1/2" RATED WATERPROOF GABLE WHEN IN PROPER ROOF LOCATION FOR PLUMBING.
15. ALL SUPPLY AIR VENTS SHALL BE EQUIPPED WITH AIR CONTROL DAMPERS.
16. PROVIDE 1/2" RATED WATERPROOF GABLE WHEN IN PROPER ROOF LOCATION FOR PLUMBING.
17. PROVIDE 1/2" RATED WATERPROOF GABLE WHEN IN PROPER ROOF LOCATION FOR PLUMBING.
18. PROVIDE 1/2" RATED WATERPROOF GABLE WHEN IN PROPER ROOF LOCATION FOR PLUMBING.
19. ALL DUCTWORK & HVAC ARE DRAWN DIMENSIONAL ONLY.

LEGEND

- SUPPLY AIR
- RETURN AIR
- EXHAUST FAN
- A/C UNIT
- THERMOSTAT
- SMOKE DAMPER
- SMOKE WALL
- 1 HOUR RATED WALL WP 9021



NOTE: ROOM VENTILATION SHALL BE SUPPLIED TO THE FRESH AIR SUPPLY SYSTEM.



MECHANICAL PLAN
SCALE: 3/16"=1'-0"

<p>REVISED: 11-8-81</p> <p>SCALE(S) NOTED</p> <p>FILE:</p> <p>JOB NO. 1949</p> <p>DATE: 8-21-07</p> <p>SHEET</p> <p>M-1</p>	<p>SUNDAY SCHOOL/GYMNASIUM</p> <h1 style="margin: 0;">DAMMON ENGINEERING, INC.</h1> <p>1095 FLORIDA AVENUE 985-648-8888 SLIDELL, LA. 70468 DAMMONENGINEERING.COM</p>	<p>MECHANICAL PLAN</p> <p>ALDRSGATE UNITED METHODIST 360 ROBERT BLVD. SLIDELL, LOUISIANA</p>
---	--	--