



FAX TRANSMITTAL

Date: August 16, 2007

To: Brandon Nowakowski

Fax No: 985 641-5950

From: Keith Schleusener

Pages: (including cover sheet) 2

Project Name: Lakeshore Church

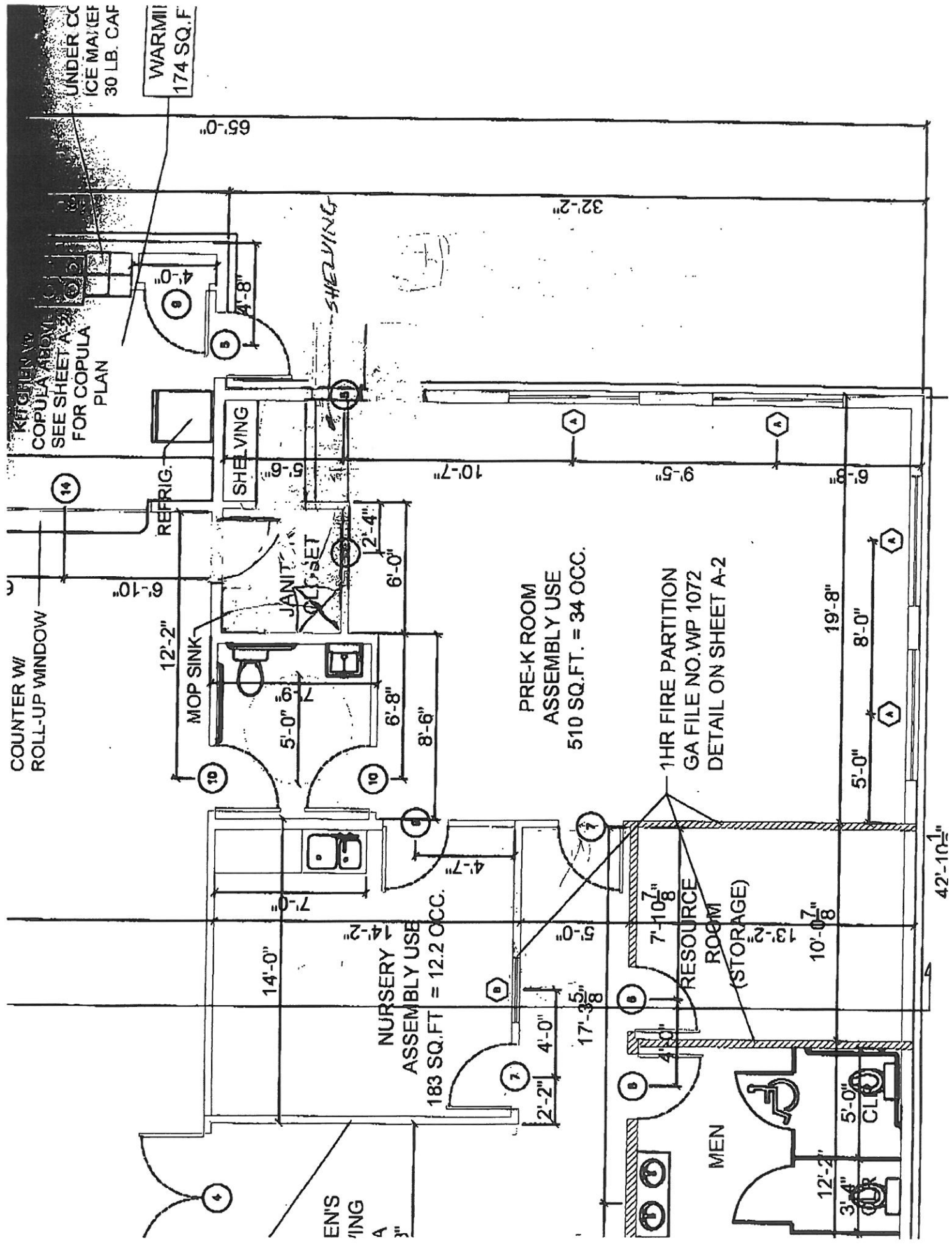
Project No:

Subject: Modifications and answers

Message: Please find an 8½" x 11 showing the modifications to the janitor's room. The janitor's room now captures some unused space out of the pre-k. Call me if you can not make out what is drawn. The last of the people have now reviewed all of the drawings. There should be no further changes.

A board member of the church is a glass supplier and has agreed to supply the wire mesh glass. It does not come as one-way glass. Therefore we will need to have two panes of glass. The wire mesh glass will be on the corridor side with the one-way glass on the room side. Please detail as such.

Signed:



COUNTER W/
ROLL-UP WINDOW

KITCHEN W/
COPULA ABOVE
SEE SHEET A-1
FOR COPULA
PLAN

UNDER CC
ICE MAKER
30 LB. CAF

WARM II
174 SQ.F.

REFRIG.

MOP SINK

SHELVING

JANIT
CLOSET

SHELVING

MEN

NURSERY
ASSEMBLY USE
183 SQ.FT = 12.2 OCC.

PRE-K ROOM
ASSEMBLY USE
510 SQ.FT. = 34 OCC.

1HR FIRE PARTITION
GA FILE NO.WP 1072
DETAIL ON SHEET A-2

RESOURCE
ROOM
(STORAGE)

65'-0"

32'-2"

6'-10"

12'-2"

9'-5"

2'-4"

6'-0"

6'-8"

8'-6"

10'-7"

9'-5"

19'-8"

8'-0"

5'-0"

14'-0"

14'-2"

7'-0"

4'-7"

183 SQ.FT = 12.2 OCC.

17'-3 5/8"

4'-0"

2'-2"

5'-0"

7'-10 7/8"

13'-2"

10'-0 7/8"

12'-2"

3'-4"

5'-0"

42'-10 1/4"

CL

CL

CL

CL

CL

CL

CL

CL

CL

CL

CL

CL

CL

CL

CL

CL

CL

CL

CL

CL

CL

CL

CL

CL

CL

CL

CL

CL

CL

CL

CL

CL

CL

CL

CL

CL

CL

CL

CL

CL

CL

CL

CL

CL

CL

CL

CL

CL

CL

CL

CL

CL

CL

CL

CL

CL

CL

CL

CL

CL

CL

CL

CL

CL

CL

CL

CL

CL

CL

CL

CL

CL

CL

CL

CL

CL

CL

CL

CL

CL

CL

CL

CL

CL

CL

CL

CL

CL

CL

CL

CL

CL

CL

CL

CL

CL

CL

CL

CL

CL

CL

CL

CL

CL

CL

CL

CL

CL

CL

CL

CL

CL

CL

CL

CL

CL

CL

CL

CL

CL

CL

CL

CL

CL

CL

CL

CL

CL

CL

CL

CL

CL

CL

CL

CL

CL

CL

CL

CL

CL

CL

CL

CL

CL

CL

CL

CL

CL

CL

CL

CL

CL

CL

CL

CL

CL

CL

CL

CL

CL

CL

CL

CL

CL

CL

CL

CL

CL

CL

CL

CL

CL

CL

CL

CL

CL

CL

CL

CL

CL

CL

CL

CL

CL

CL

CL

CL

CL

CL

CL

CL

CL

CL

CL

CL

CL

CL

CL

CL

CL

CL

CL

CL

CL

CL

CL

CL

CL

CL

CL

CL

CL

CL

CL

CL

CL

CL

CL

CL

CL

CL

CL

CL

CL

CL

CL

CL

CL

CL

CL

CL

CL

CL

CL

CL

CL

CL

CL

CL

CL

CL

CL

CL

CL

CL

CL

CL

CL

CL

CL

CL

CL

CL

CL

CL

CL

CL

CL

CL

CL

CL

CL

CL

CL

CL

CL

CL

CL

CL

CL

CL

CL

CL

CL

CL

CL

CL

CL