

**DAMMON ENGINEERING, INC.**  
**EMMETT DAMMON**

**ARCHITECT**  
**ROBERT WILTSE**

1095 FLORIDA AVENUE  
 SLIDELL, LA. 70458  
 985-649-5832

WEBSITE:  
 WWW.DAMMONENGINEERING.CO  
 EMAIL:  
 DAMMONENG@BELL.SOUTH.NET

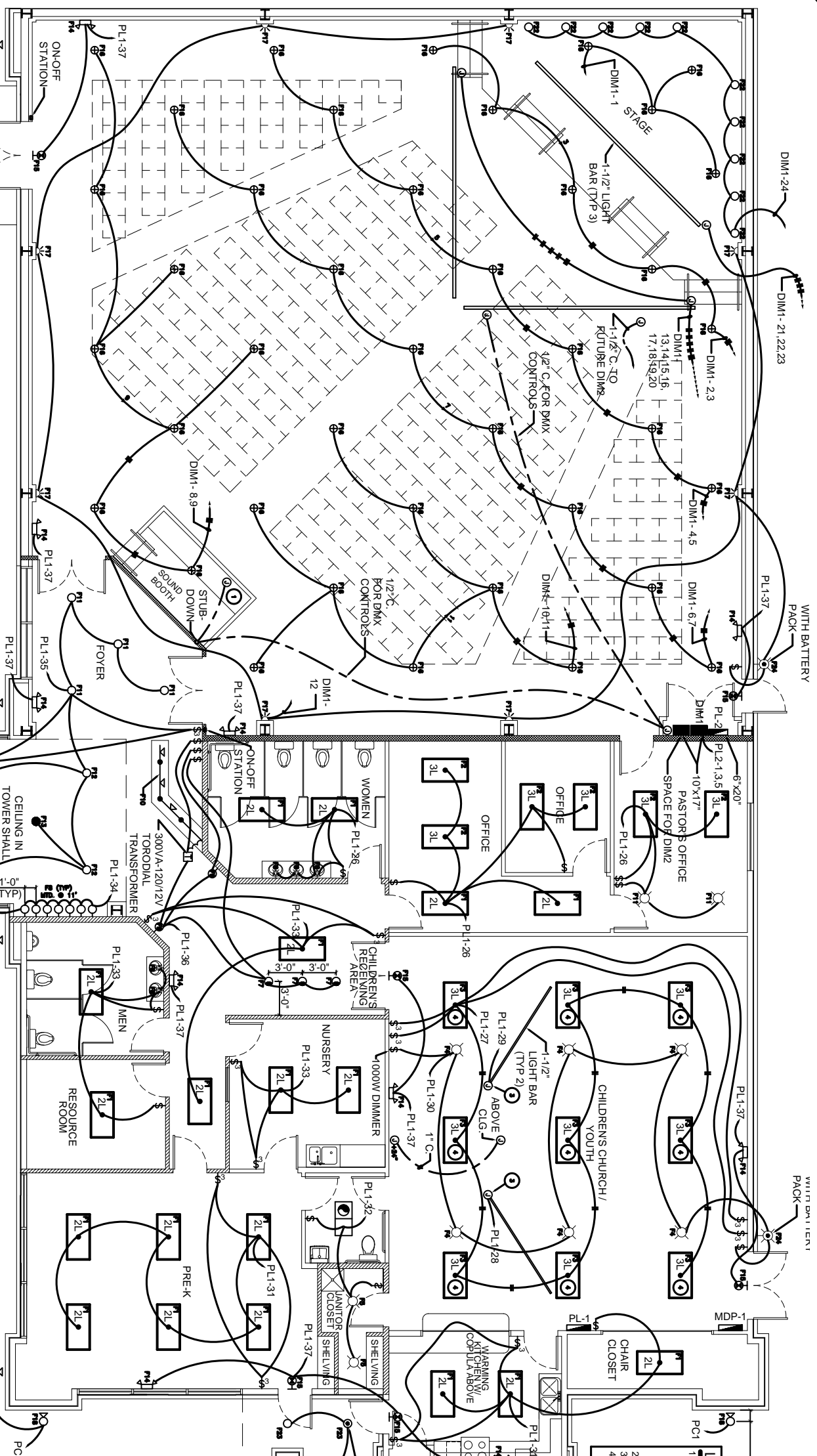
ARCHITECTURE  
 ENGINEERING  
 STUDIES  
 PLANNING  
 INVESTIGATION  
 EXPERT WITNESS

**LAKE SHORE CHURCH**  
 BRYAN BILLAC  
 BREWSTER ROAD  
 SECTION 12, TOWNSHIP 7,  
 RANGE 10E  
 COVINGTON, LA

**LIGHTING PLAN**

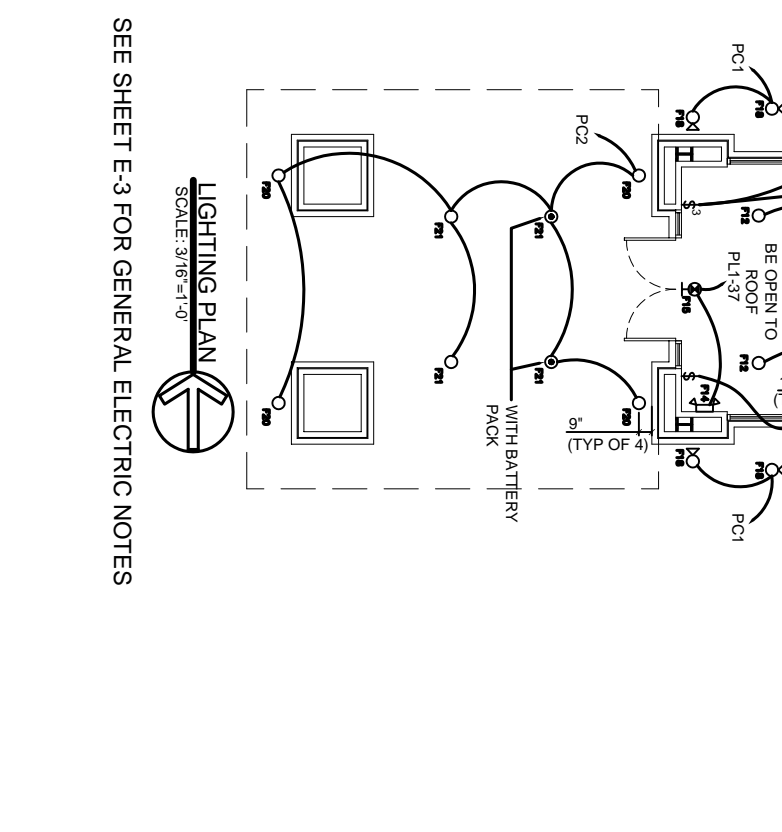
SCALE: AS NOTED  
 JOB#: 1883  
 DATE: 10-22-07  
 SHEET 10  
**E-2**  
 OF 13

- LIGHTING NOTES**
- DIMMING RACK SHALL BE ETC. UNISON DR12-24-120-ML-3-N-CMED-1-W OR EQUAL WITH (1) D-20 DUAL CIRCUIT MODULES. PROVIDE (1) MASTER CONSOLE ETC SF2486. PROVIDE (1) PRE-SET WALL STATION WITH (5) BUTTONS. ETC. U10005-F. PROVIDE ALL INTERCABLES AS REQUIRED. COORDINATE AND VERIFY ALL REQUIREMENTS WITH OWNER BEFORE ORDERING.
  - NOT USED.
  - JUNCTION BOX MOUNTED ABOVE CEILING FOR FUTURE LIGHTING. 2 CKT. EA.
  - (3) LAMP. (2) BALLAST FIXTURE. ONE LAMP EACH FIXTURE ON ONE SWITCH AND TWO LAMPS EACH FIXTURE ON OTHER SWITCH. THIS ROOM ONLY.



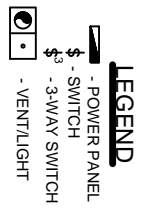
**DIMMER BANK #1 (DIM1)**

CKT NO	AREA	LOAD (VA)	CONTROLLER
1	OVER STAGE	2000	1
2	FRONT OF STAGE	1500	2
3	FRONT OF STAGE	1000	2
4	GENERAL AREA	2000	3
5	GENERAL AREA	1500	3
6	GENERAL AREA	2000	3
7	GENERAL AREA	2000	3
8	GENERAL AREA	2000	3
9	GENERAL AREA	2000	3
10	GENERAL AREA	2000	3
11	GENERAL AREA	2000	3
12	SCONCES	960	4
13	STAGE LTG. ELP.	1000	5
14	STAGE LTG. ELP.	1000	6
15	STAGE LTG. ELP.	1000	7
16	STAGE LTG. ELP.	1000	8
17	STAGE LTG. ELP.	1000	9
18	STAGE LTG. ELP.	2000	10
19	STAGE LTG. ELP.	2000	11
20	STAGE LTG. ELP.	2000	12
21	STAGE LTG. FRES.	2000	13
22	STAGE LTG. FRES.	2000	14
23	STAGE LTG. FRES.	2000	15
24	STAGE UP LIGHT	500	16
TOTAL =		38460	
3ø480V = 108.8A @ 120/208V/3Ø-4W			



**LIGHTING FIXTURE SCHEDULE**

TYPE	CATALOG NO.	MOUNTING	QTY	TYPE	LAMPS	TOTAL WATTS	NOTES
F1	2x4 PRISMATIC 2 LAMP TROFFER	RECESSED	19				
F2	2x4 PRISMATIC 3 LAMP TROFFER	RECESSED	6				
F3	2x4 PRISMATIC 3 LAMP TROFFER WITH 2 BALLASTS	RECESSED	9				
F4	100W-A19 INCANDESCENT DOWNLIGHT	RECESSED	6				
F5	60W-A19 INCANDESCENT DRUM	SURFACE	2				
F6	(3) 40W-A19 ABOVE MIRROR LIGHT	SURFACE	5				
F7	PORTFOLIO CLW-7142-E-7483-L1	RECESSED	3				
F8	BRUCK 131 260MC	SURFACE	7				
F9	VISA CB86866-1F5S4-120BCA-BA WITH 1F54T9HO	SURFACE	2				
F10	BRUCK 140012-140306-(2)140180-(6)140360-(3)220913MC-(3)220470MC WITH (3) MR16-EXN & (3) 50W B1-PIN LAMPS		1				
F11	PORTFOLIO C7242-E-7350-L1 WITH 2/42 TRT LAMPS	RECESSED	4				
F12	PORTFOLIO C0257-E-9350-L1 WITH 2/57 TRT LAMPS	PENDANT	4				
F13	LOGO	PENDANT	1				
F14	EMERGENCY LIGHT WITH 90 MINUTE BATTERY BACKUP	SURFACE	10				
F15	EXIT SIGN WITH 90 MINUTE BATTERY BACKUP	SURFACE	7				
F16	KRAMER KLB-5000T-WD-CFF-120-BLACK 500W-14 LAMPS	PENDANT	40				
F17	LIGHTTOWER 40872-40882 WITH 2/80W T10 INCAND. LAMPS	SURFACE	8				
F18	COOPER VFS-K-70MH-120-AP-PC-ST-AP	EXTERIOR	10				
F19	COOPER VFS-K-150MH-120-AP-PC-ST-AP	EXTERIOR	1				
F20	PORTFOLIO C7242-E-7350-L1 2/42TRT LAMP	RECESSED	5				
F21	PORTFOLIO C7242-E-7350-L1 2/42TRT LAMPS (ITEM)	RECESSED	4				
F22	LUMASCAPE LS393-293-AH-82-XK-23-R-8 MR16-ENZ	PENDANT	10				
F23	PORTFOLIO C7042-E-7400-L1 1/42TRT LAMP (ITEM)	RECESSED	3				
F24	EXTERIOR LIGHT WITH BATTERY PACK	SURFACE	2				



SEE SHEET E-3 FOR GENERAL ELECTRIC NOTES

