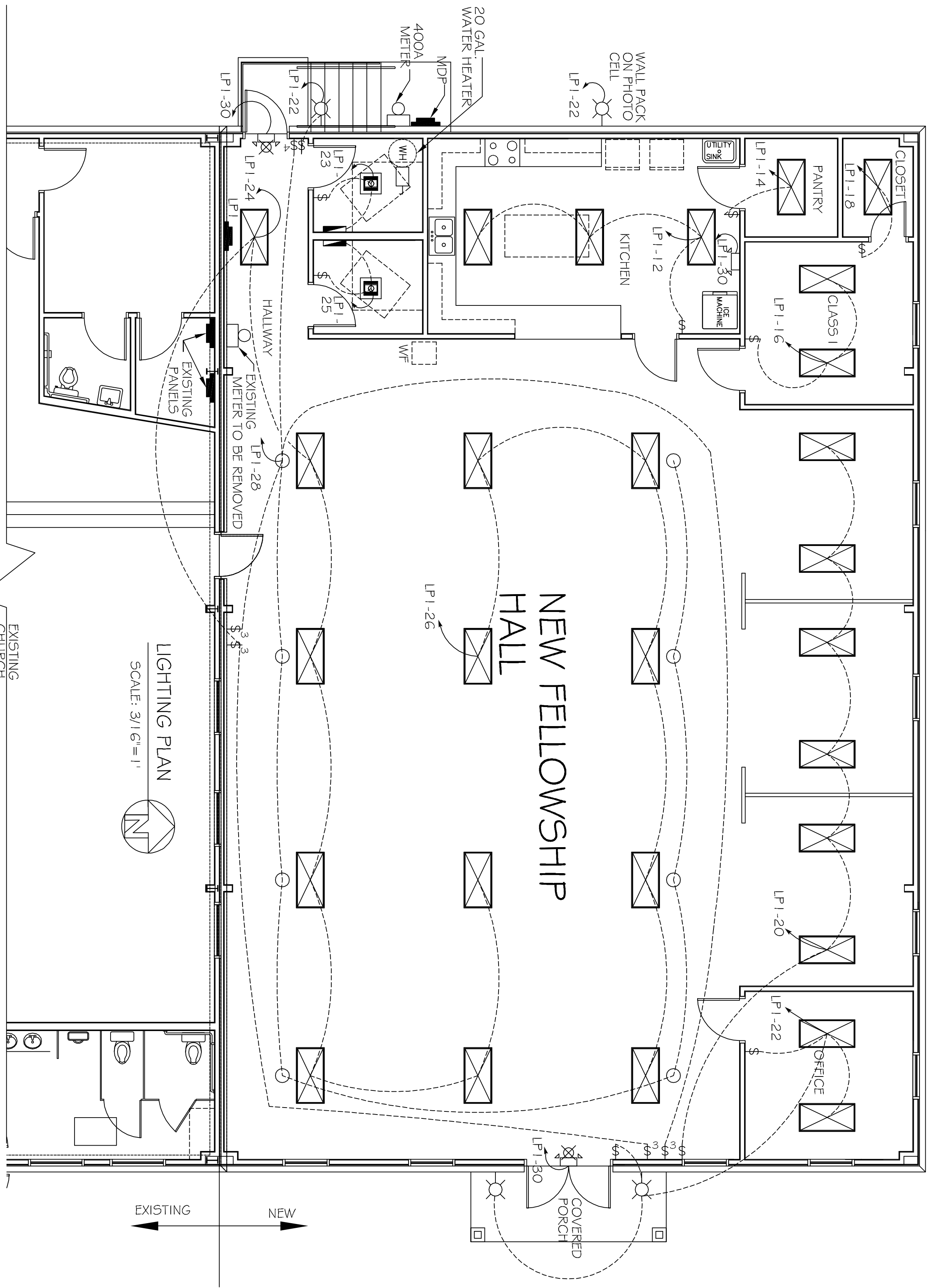


PANEL: LP-1
 LOCATION: TABERNACLE BAPTIST CHURCH ELECTRICAL CLOSET
 FEEDER SOURCE: CLECO

CKT. NO.	THHN WIRE SIZE	LOAD DESCRIPTION	LOCATION	BREAKER AMP	LOAD (VA)	A4		B4		LOAD (VA)	BREAKER POLE	BREAKER AMP	LOAD DESCRIPTION	LOCATION	THHN WIRE SIZE	CKT. NO.
						1	2	1	2							
1	#10	WATER HEATER		60	3600					1850	2	50	STOVE		#8	2
3	#12	REFRIGERATOR		20	3600					1950					#10	4
5	#12	REFRIGERATOR		20	1440					2400	2	30	ICE MACHINE		#10	6
7	#12	REFRIGERATOR		20	1440					2400					#10	8
9	#12	CLASS I AND HALL RECEPTACLES		20	1200					480	1	30	WATER FOUNTAIN		#12	10
11	#12	OFFICE AND HALL RECEPTACLES		20	1080					600	1	30	KITCHEN FLORESCENT LIGHTS		#12	12
13	#10	HALL AND HALLWAY RECEPTACLES		20	600					200	1	50	KITCHEN PANTRY FLORESCENT LIGHT		#12	14
15	#10	HALL RECEPTACLES		20	240					400	1	50	CLASS I FLORESCENT		#12	16
17	#12	KITCHEN RECEPTACLES		20	480					200	1	30	CLASS I FLORESCENT CLOSET		#12	18
19	#12	KITCHEN RECEPTACLES		20	240					1200	1	30	HALL FLORESCENT LIGHTS		#12	20
21	#12	KITCHEN RECEPTACLES		20	240					1200	1	20	OFFICE AND EXTERIOR LIGHTS		#12	22
23	#12	RESTROOM LIGHT/FAN AND RECEPTACLES		20	420					1400	1	20	HALL AND HALLWAY FLORESCENT LIGHTS		#12	24
25	#12	RESTROOM LIGHT/FAN AND RECEPTACLES		20	420					1200	1	20	HALL FLORESCENT LIGHTS		#12	26
27	#12	SPARE		20	-					1600	1	20	HALL CAN LIGHTS		#12	28
29	#12	SPARE		20	-					900	1	20	EMERGENCY/EXIT LIGHTS		#12	30
31	#12	SPARE		20	-					-	1	20	SPARE		#12	32
33	#12	SPARE		20	-					-	1	20	SPARE		#12	34
35	-	SPACE		-	-					-	1	20	SPARE		#12	36
37	-	SPACE		-	-					-	-	-	SPACE		-	38
39	-	SPACE		-	-					-	-	-	SPACE		-	40
41	-	SPACE		-	-					-	-	-	SPACE		-	42
				TOTAL CONNECTED LOAD (VA)= 32,860		A4=16,380		B4=16,470				GROUND BUS		GROUND WIRE (G)		

PANEL: MDP-1
 LOCATION: TABERNACLE BAPTIST CHURCH ELECTRICAL CLOSET
 FEEDER SOURCE: CLECO

CKT. NO.	THHN WIRE SIZE	LOAD DESCRIPTION	LOCATION	BREAKER AMP	LOAD (VA)	A4		B4		LOAD (VA)	BREAKER POLE	BREAKER AMP	LOAD DESCRIPTION	LOCATION	THHN WIRE SIZE	CKT. NO.
						1	2	1	2							
1	#6	A/C COMPRESSOR #1		60	4800					7500	2	70	AHU #1		#6	2
3	#6	A/C COMPRESSOR #1		60	4800					7500					#6	4
5	#6	A/C COMPRESSOR #2		60	4800					7500	2	70	AHU #2		#6	6
7	#10	A/C COMPRESSOR #3		30	3000					2500	2	30	AHU #3		#10	8
9	#10	A/C COMPRESSOR #3		30	3000					2500					#10	10
11	#2	NEW LP1		100	12000					24000	2	225	EXISTING P1		3/0	14
13	#6	RELOCATED A/C FROM P1		60	4800					24000	2	30	SPARE		#10	16
15	#12	SPARE		20	-					-	1	20	SPARE		#12	18
17	#12	SPARE		20	-					-	1	20	SPARE		#12	20
19	#12	SPARE		20	-					-	1	20	SPARE		#12	22
21	#12	SPARE		20	-					-	1	20	SPARE		#12	24
23	#12	SPARE		20	-					-	1	20	SPARE		#12	26
25	#12	SPARE		20	-					-	1	20	SPARE		#12	28
27	#12	SPARE		20	-					-	1	20	SPARE		#12	30
29	#12	SPARE		20	-					-	1	20	SPARE		#12	32
31	#12	SPARE		20	-					-	1	20	SPARE		#12	34
33	#12	SPARE		20	-					-	1	20	SPARE		#12	36
35	-	SPACE		-	-					-	1	20	SPACE		#12	38
37	-	SPACE		-	-					-	1	20	SPACE		#12	40
39	-	SPACE		-	-					-	-	-	SPACE		-	42
41	-	SPACE		-	-					-	-	-	SPACE		-	42
				TOTAL CONNECTED LOAD (VA)= 137000		A4=70900		B4=66100				GROUND BUS		GROUND WIRE (G)		



TYPE	DESCRIPTION	TOTAL WATTS
○	4-Ø ARCHITECTURAL HIGH LUMEN LED DOWNLIGHT, MAXIMUM MODEL TH-4LED (OR EQUAL)	32W
□	EXHAUST VENTILATION CONDUIT FIXTURE	90W
⊞	EMERGENCY LIGHT W/ 90 MIN. BATTERY BACKUP	12W
⊞	EXHAUST VENTILATION CONDUIT W/ 90 MIN. BATTERY BACKUP	32W
⊞	2 x 4 FLUORESCENT 2-LAMP T8, SURFACE MOUNT FIXTURE, LITHONIA LIGHTING MODEL 2R75X (OR EQUAL)	32W

SYMBOL	LEGEND
○	SWITCH
⊞	3-WAY SWITCH
⊞	4-WAY SWITCH
⊞	POWER PANEL

#	DESCRIPTION	DATE

TABERNACLE BAPTIST CHURCH
 NEW FELLOWSHIP HALL
 2445 FOURTH STREET
 SLIDELL, LA 70455

DAMMON ENGINEERING, INC.
 Architects & Engineers

CHIEF ENGINEER, EMMETT DAMMON, P.E.
 CHIEF ARCHITECT, KEVIN KINCHEN
 554 OLD SPANISH TRAIL
 SLIDELL, LA 70456

dammonengineering.com
 dammoneng@bellsouth.net
 PHONE: 985-649-5832
 FAX: 985-641-5950

LIGHTING PLAN
 SHEET No: 12 OF 13
E-2