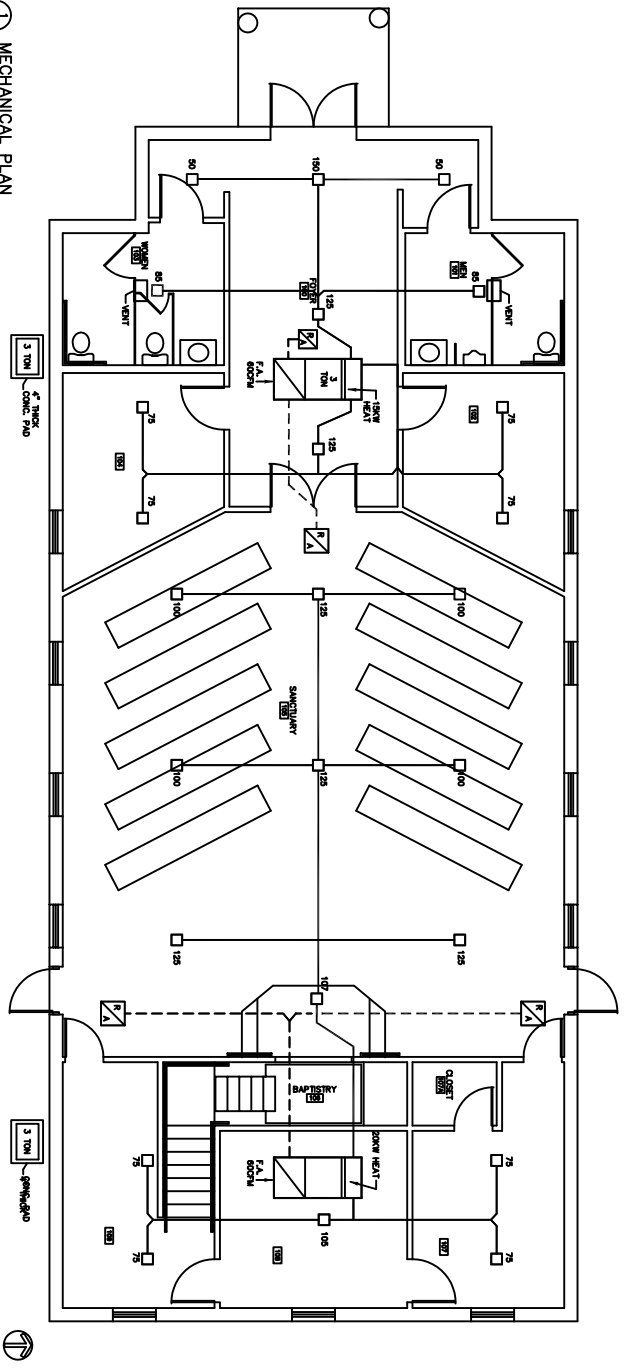
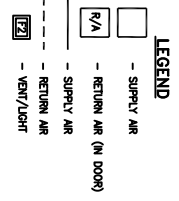


MECHANICAL PLAN
1/2" = 1'-0"



- HVAC NOTES**
1. ALL SYSTEMS UNDER 2000 CFM AND LESS THAN 1500 CFM, SINGLE DUCT SYSTEMS SHALL BE PROVIDED WITH 100% OUTSIDE AIR AND 100% RETURN AIR TO BE RECYCLED PER SIMONS STANDARDS.
 2. EXHAUST DUCTWORK TO BE QUANTITY SIZED WITH 1" PER SQUARE FOOT. LINE WITH 1/2" DIA. RIGID DUCT TO BE 12-18" CLASS I AIR VENT MATERIALS.
 3. ROOMS EXHAUST DUCT TO BE 12-18" CLASS I AIR VENT MATERIALS.
 4. DUCT SIZES SHOWN ARE CLEAN INLET DIMENSIONS.
 5. IN ALL SYSTEMS OVER 2000 CFM AND LESS THAN 1500 CFM, SINGLE DUCT SYSTEMS SHALL BE PROVIDED WITH 100% OUTSIDE AIR AND 100% RETURN AIR TO BE RECYCLED PER SIMONS STANDARDS. LINE WITH 1/2" DIA. RIGID DUCT TO BE 12-18" CLASS I AIR VENT MATERIALS.
 6. PROVIDE ALL LISTED USE OF PRESSURE IN RETURN AIR OF EACH SYSTEM UNDER 2000 CFM TO SHUT DOWN FAN IN THE EVENT OF FIRE.
 7. ALL SYSTEMS UNDER 2000 CFM SHALL BE PROVIDED WITH 100% OUTSIDE AIR AND 100% RETURN AIR TO BE RECYCLED PER SIMONS STANDARDS. LINE WITH 1/2" DIA. RIGID DUCT TO BE 12-18" CLASS I AIR VENT MATERIALS.
 8. COMPONENTS DUCTING TO BE PVC PIPE RUN TO PLUMBERS P-TAP WITHIN THE REEF OF AIR INVOLVED UNITS.
 9. ALL TRANSDUCERS TO BE AUTOMATIC COMPENSATED WITH VENT SENSING.
 10. EXHAUST FAN SHALL TO MATCH MOTOR 1/2 HP, 120 CFM OR EQUAL. FAN SHALL BE CONTROLLED BY SWITCH ON WALL AT LIGHT SWITCH. PROVIDE ROCK SWAY DAMPER.
 11. PROVIDE AND INSTALL WATER FLOOR DRAIN VENT ON ROOF FOR TOILET EXHAUST.
 12. ALL SUPPLY AIR VENTS SHALL BE EQUIPPED WITH AIR CONTROL DAMPERS.
 13. LOCATION OF OUTSIDE VENTS SHALL BE AS SHOWN ON PLAN.
 14. RETURN AIR LINES SHALL BE CEILING BY LIGHT MANUFACTURER AND INSTALLED ACCORDING TO MANUFACTURER'S INSTRUCTIONS.
 15. FRESH AIR SHALL BE SUPPLIED TO EACH AIR HANDLER THROUGH ROOF TOP DUCT SUPPLIED WITH 100% OUTSIDE AIR AND 100% RETURN AIR TO BE RECYCLED PER SIMONS STANDARDS. LINE WITH 1/2" DIA. RIGID DUCT TO BE 12-18" CLASS I AIR VENT MATERIALS.
 16. ALL EXHAUST, MECHANICAL, & PLUMBING PENETRATIONS SHALL BE MADE THROUGH ROOF WITH A METALLIC CHIMNEY OR PENETRATOR THE PROVISION OF FLASHING AND WEATHER STRIPS SHALL BE IN ACCORDANCE WITH ASTM-2114.



SCALE: AS NOTED
FILE: _____
JOB NO. _____
DATE: 02-14-03
SHEET
M-1
OF

NORTHSHORE CHURCH OF CHRIST

DAMMON ENGINEERING, INC.
ARCHITECTS ENGINEERS

3000 OLD SPANISH TRAIL, SUITE 100, 985-6449-5538, SLIDELL, LA. 70468
DAMMONENGINEERING.COM

MECHANICAL PLAN

MANDVILLE, LOUISIANA
ST. TAMMANY PARISH