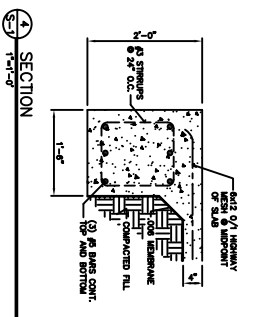
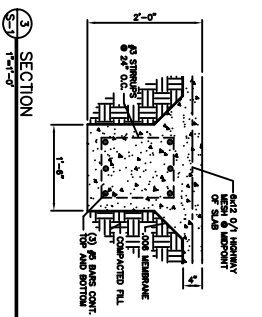
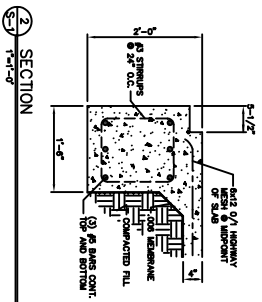


1 FOUNDATION PLAN
1/2"=1'-0"



- NOTES:
1. CONTRACTOR SHALL FIELD VERIFY ALL DIMENSIONS.
 2. TREAT SOIL BELOW SLAB FOR TERMITES.
 3. CONCRETE MIX SHALL BE 3000 PSI.

SCALE: AS NOTED
FILE:
JOB NO.
DATE: 02-14-03
SHEET
S-1
OF

NORTHSHORE CHURCH OF CHRIST
DAMMON ENGINEERING, INC.
 ARCHITECTS ENGINEERS
 3000 OLD SPANISH TRAIL, SUITE 100 986-649-5538 SLIDELL, LA. 70468
 DAMMONENGINEERING.COM

FOUNDATION PLAN
 SLIDELL, LOUISIANA
 ST. TAMMANY PARISH