

DAMMON ENGINEERING, INC.

CHIEF ENGINEER
EMMETT
DAMMON, P.E.

CHIEF ARCHITECT
ROBERT
WILTSE

1095 FLORIDA AVENUE
SLIDELL, LA. 70458
OFFICE: 985-649-5832
FAX: 985-641-5950

WEBSITE:
WWW.DAMMONENGINEERING.COM

EMAIL:
DAMMONENG@BELLSOUTH.NET

ARCHITECTURE
ENGINEERING
STUDIES
PLANNING
INVESTIGATION
EXPERT WITNESS

NEW
CHURCH

TABERNACLE
BAPTIST
CHURCH
2445 FOURTH AVE.
SLIDELL, LA

REFLECTED
CEILING
PLAN

REV:

SCALE: AS NOTED

JOB#: 2050

DATE: 2-8-10

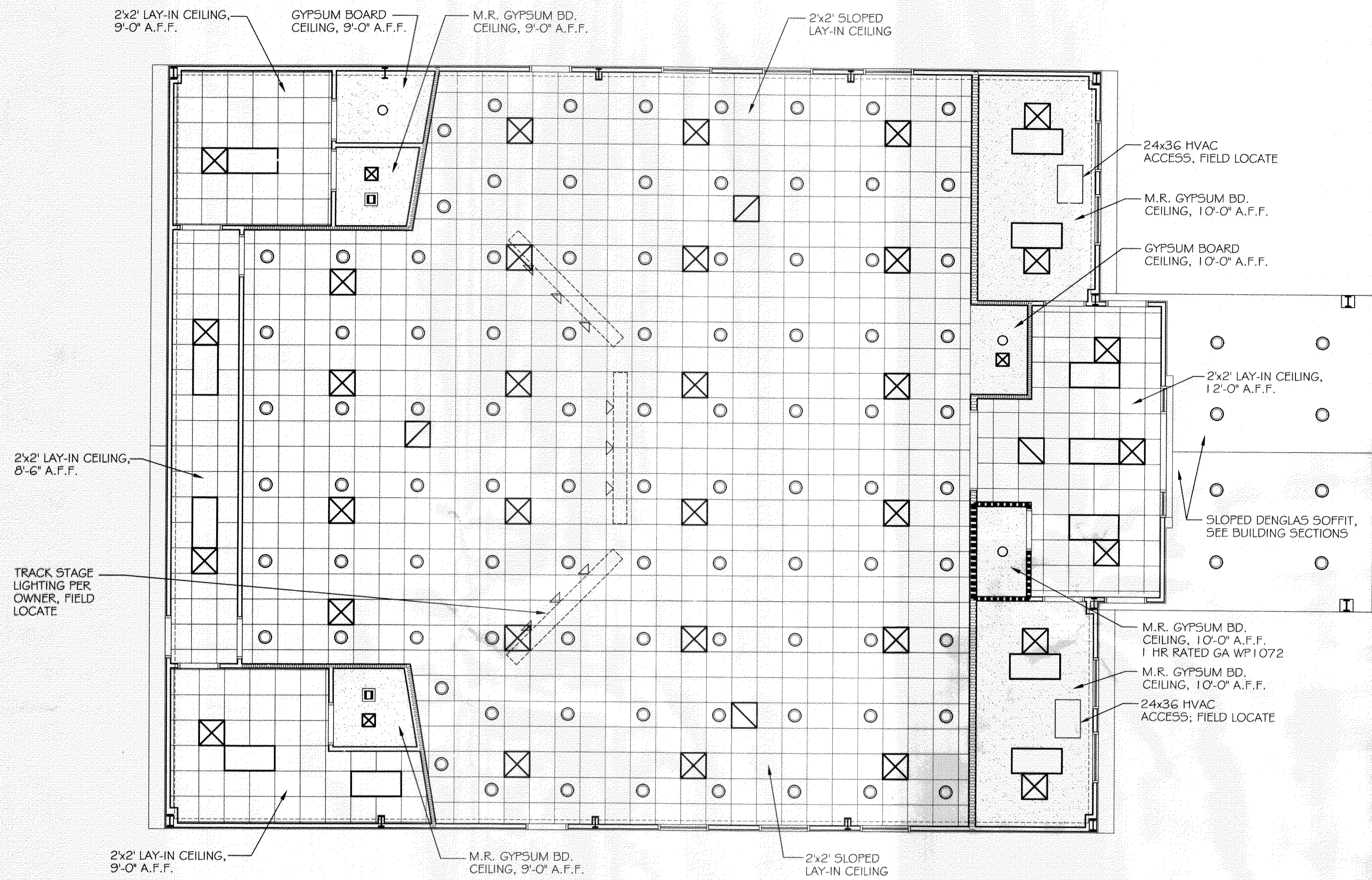
SHEET 17

A-6

OF 25

376923
REVIEWED FOR
STATE FIRE MARSHAL
AS PER REVIEW LETTER
BY: WILLIAM D. JONES, ARCHITECT, CBO
William D. Jones

- LEGEND**
- 2x4' FLUORESCENT LIGHT
 - CAN LIGHT
 - SURFACE MTD. FIXTURE
 - EXHAUST VENT/LIGHT COMBO
 - SUPPLY AIR
 - RETURN AIR



REFLECTED CEILING PLAN
SCALE: 3/16"=1'

