

# DAMMON ENGINEERING, INC.

CHIEF ENGINEER  
EMMETT DAMMON, P.E.

CHIEF ARCHITECT  
ROBERT WILTSE

1095 FLORIDA AVENUE  
SLIDELL, LA. 70458  
OFFICE: 985-649-5832  
FAX: 985-641-5950

WEBSITE:  
WWW.DAMMONENGINEERING.COM

EMAIL:  
DAMMONENG@BELLSOUTH.NET

ARCHITECTURE  
ENGINEERING  
STUDIES  
PLANNING  
INVESTIGATION  
EXPERT WITNESS

## NEW CHURCH

TABERNACLE BAPTIST CHURCH  
2445 FOURTH AVE.  
SLIDELL, LA

## SITE PLAN

REV:

SCALE: AS NOTED

JOB#: 2050

DATE: 2-8-10

SHEET 3

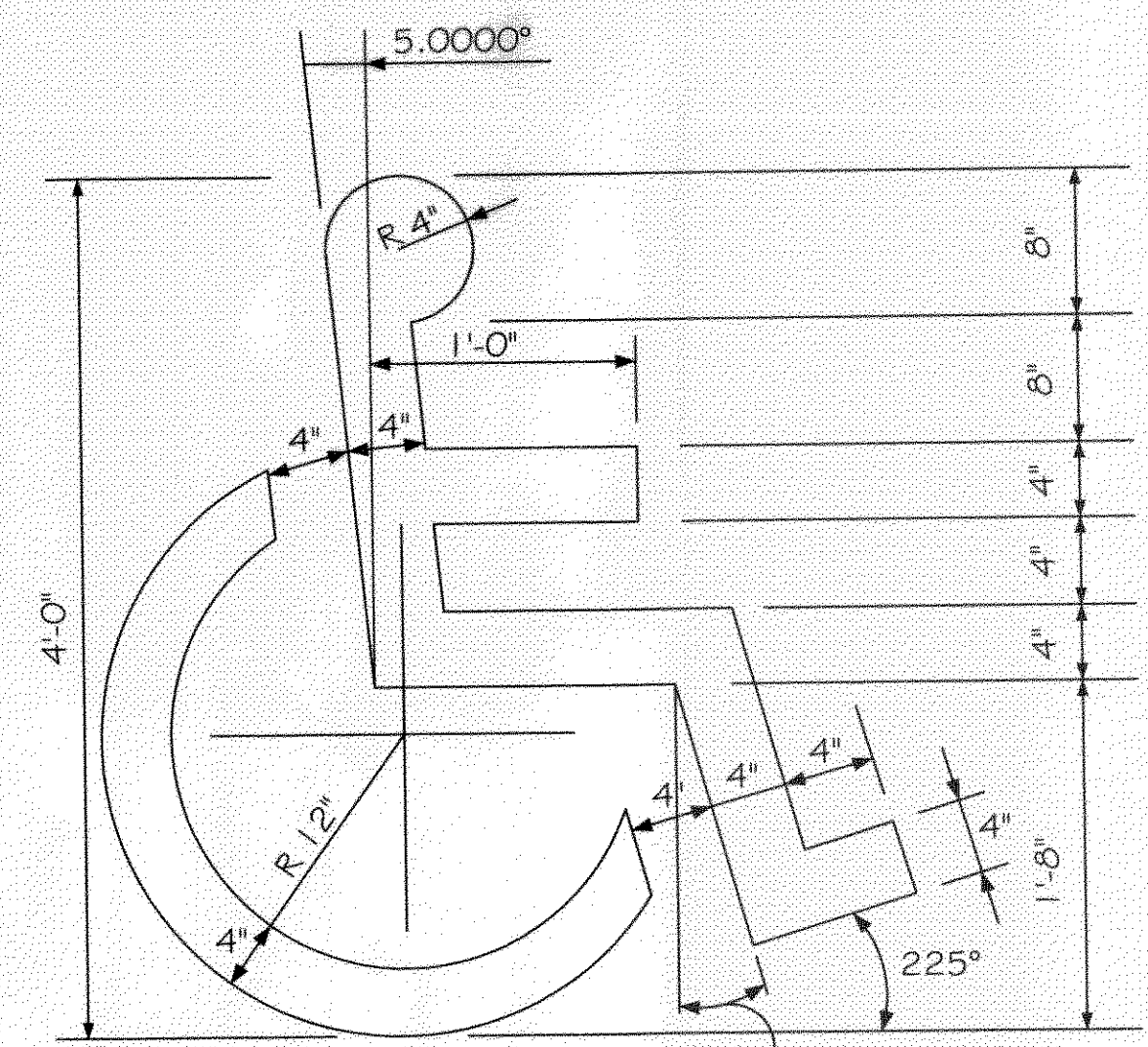
# C-2

OF 25

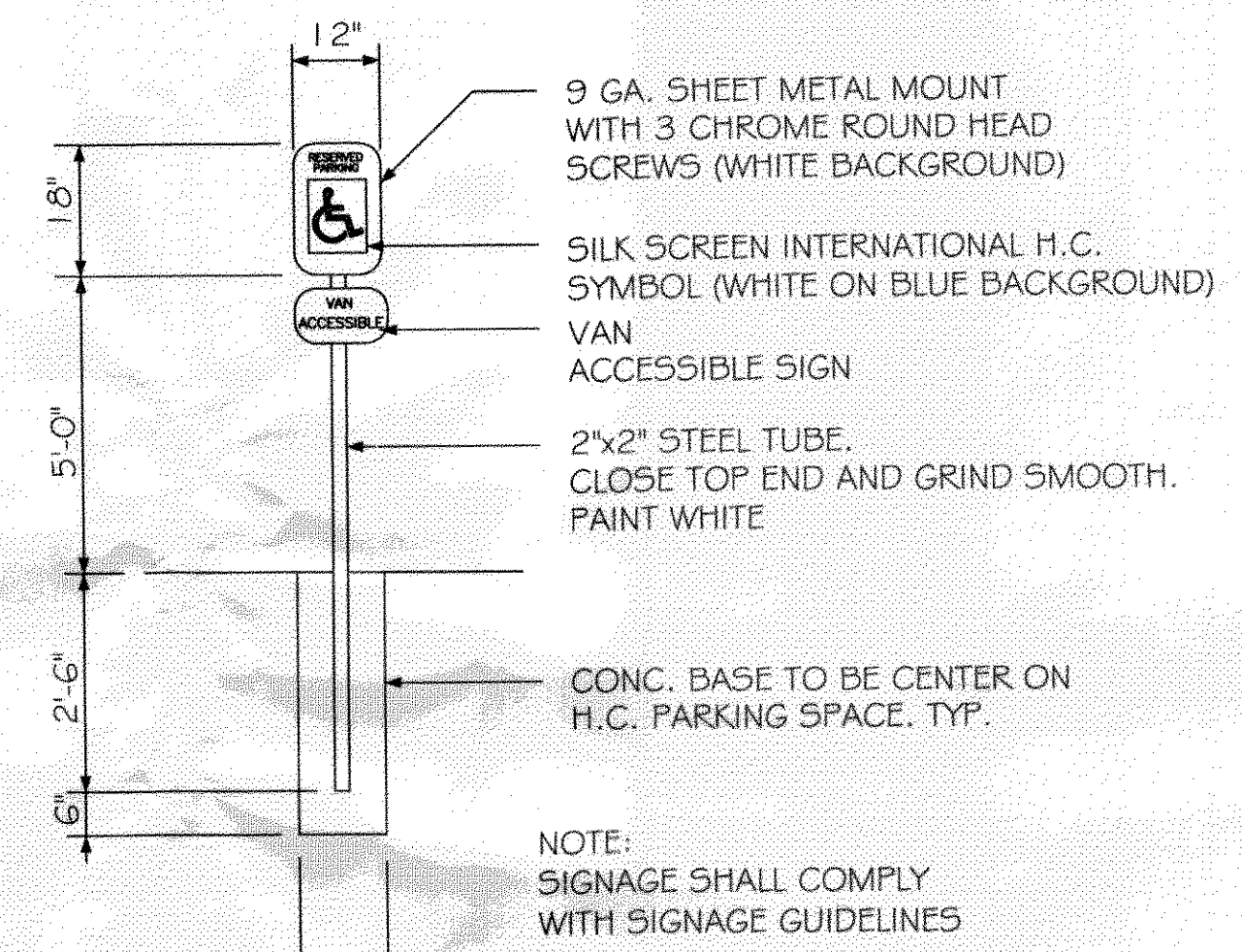
**PARKING REQUIREMENTS:**  
231 OCCUPANTS @ 1 PARKING SPACES / 5 OCCUPANTS = 46 SPACES, 46 PARKING SPACES @ 1 HCP. SPACE / 25 NORMAL SPACES = 2 HCP SPACES, TOTAL PARKING SPACES REQUIRED = 48 SPACES (2 HCP)

**PARKING PROVIDED:**  
58 REGULAR SPACES AND 2 HCP. SPACES (INCLUDING OFF-STREET PARKING-SEE SHEET C-3)  
TOTAL PARKING PROVIDED: 60 SPACES

**SITE LIGHTING**  
EXTERIOR LIGHTING SHALL BE SHADED OR INWARDLY DIRECTED IN SUCH A MANNER SO THAT NO DIRECT LIGHTING OR GLARE BE CAST BEYOND THE PROPERTY LINE. THE INTENSITY OF SUCH LIGHTING SHALL NOT EXCEED ONE FOOT CANDLE AS MEASURED AT THE ABUTTING PROPERTY LINE.

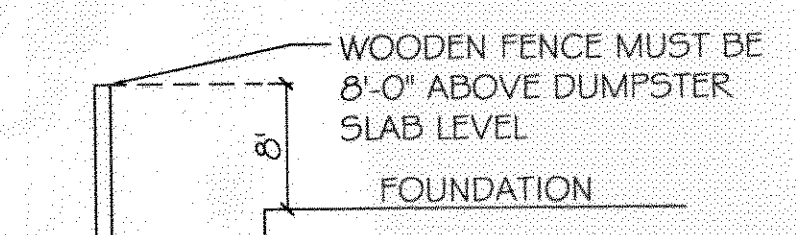


HANDICAP SYMBOL DETAIL  
N. T. S.



HANDICAP PARKING SIGN  
N. T. S.

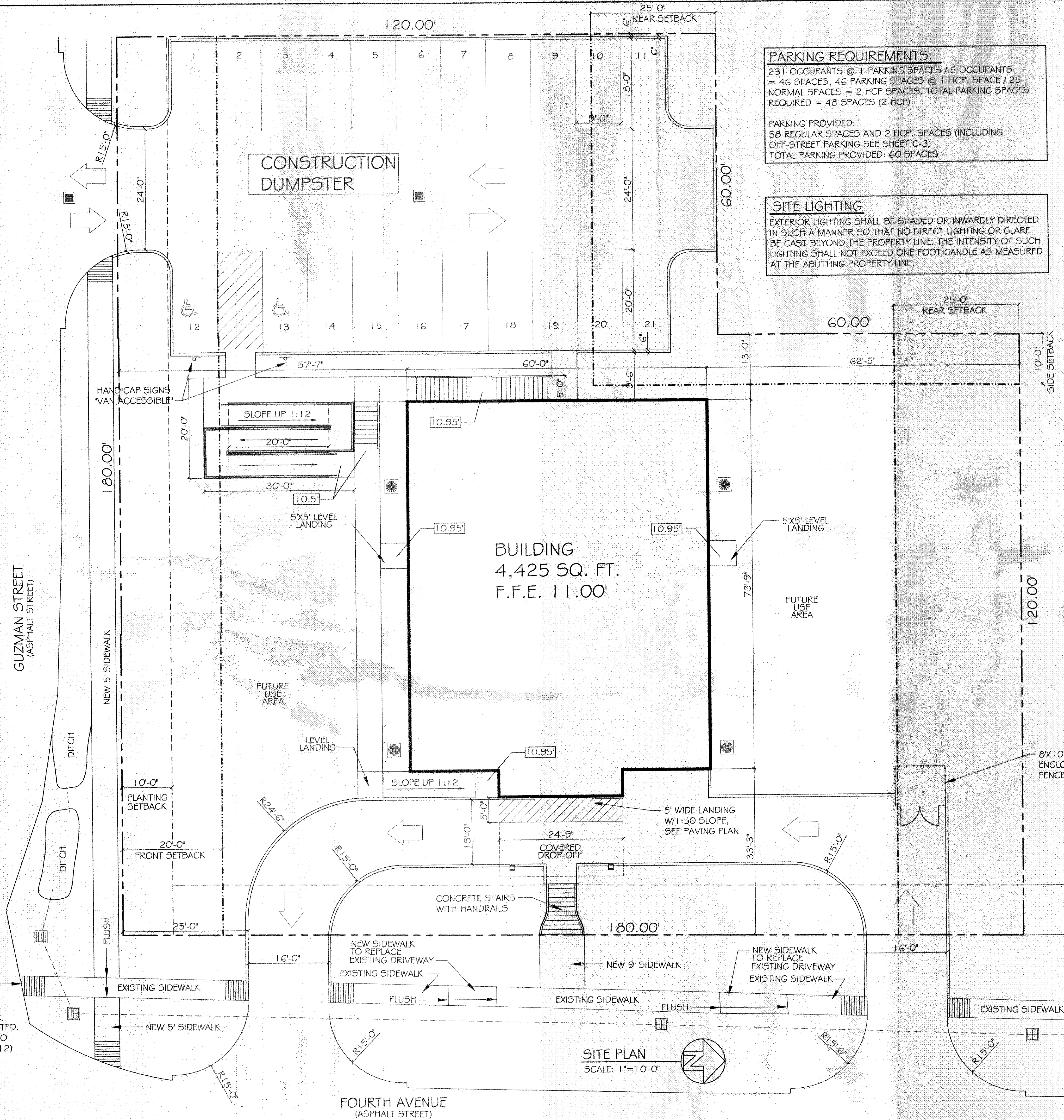
376923  
REVIEWED FOR  
STATE FIRE MARSHAL  
AS PER REVIEW LETTER  
BY: WILLIAM D. JONES, ARCHITECT, CBO  
*William D. Jones*



WOODEN FENCE DETAIL  
N.T.S.

### LEGEND

- - - - - PROPERTY LINE
- - - - - BUILDING SETBACK
- - - - - LANDSCAPING SETBACK MINIMUM
- - - - - UTILITY / EASEMENT LINE
- - - - - NEW BUILDING OUTLINE
- ♿ - HANDICAP PARKING
- - HANDICAP PARKING SIGN
- - TRASH RECEPTACLE



**HCP RAMP NOTE(TYP):**  
3/4" MAX. RISE. PROVIDE "DETECTABLE WARNING" ON RAMP. CUT 1/4" DEEP GROOVES @ 2-3" O.C. SCORED INTO CONCRETE AND PAINTED. TYPICAL @ ALL RAMP LEADING INTO VEHICULAR AREAS. (MAX SLOPE 1:12)

SITE PLAN  
SCALE: 1"=10'-0"