

DAMMON ENGINEERING, INC.

CHIEF ENGINEER
EMMETT DAMMON, P.E.

CHIEF ARCHITECT
ROBERT WILTSE

1095 FLORIDA AVENUE
SLIDELL, LA. 70458
OFFICE: 985-649-5832
FAX: 985-641-5950

WEBSITE:
WWW.DAMMONENGINEERING.COM

EMAIL:
DAMMONENG@BELL5OUTH.NET

ARCHITECTURE
ENGINEERING
STUDIES
PLANNING
INVESTIGATION
EXPERT WITNESS

NEW CHURCH

TABERNACLE BAPTIST CHURCH
2445 FOURTH AVE.
SLIDELL, LA

SITE PAVING PLAN

REV:

SCALE: AS NOTED

JOB#: 2050

DATE: 2-8-10

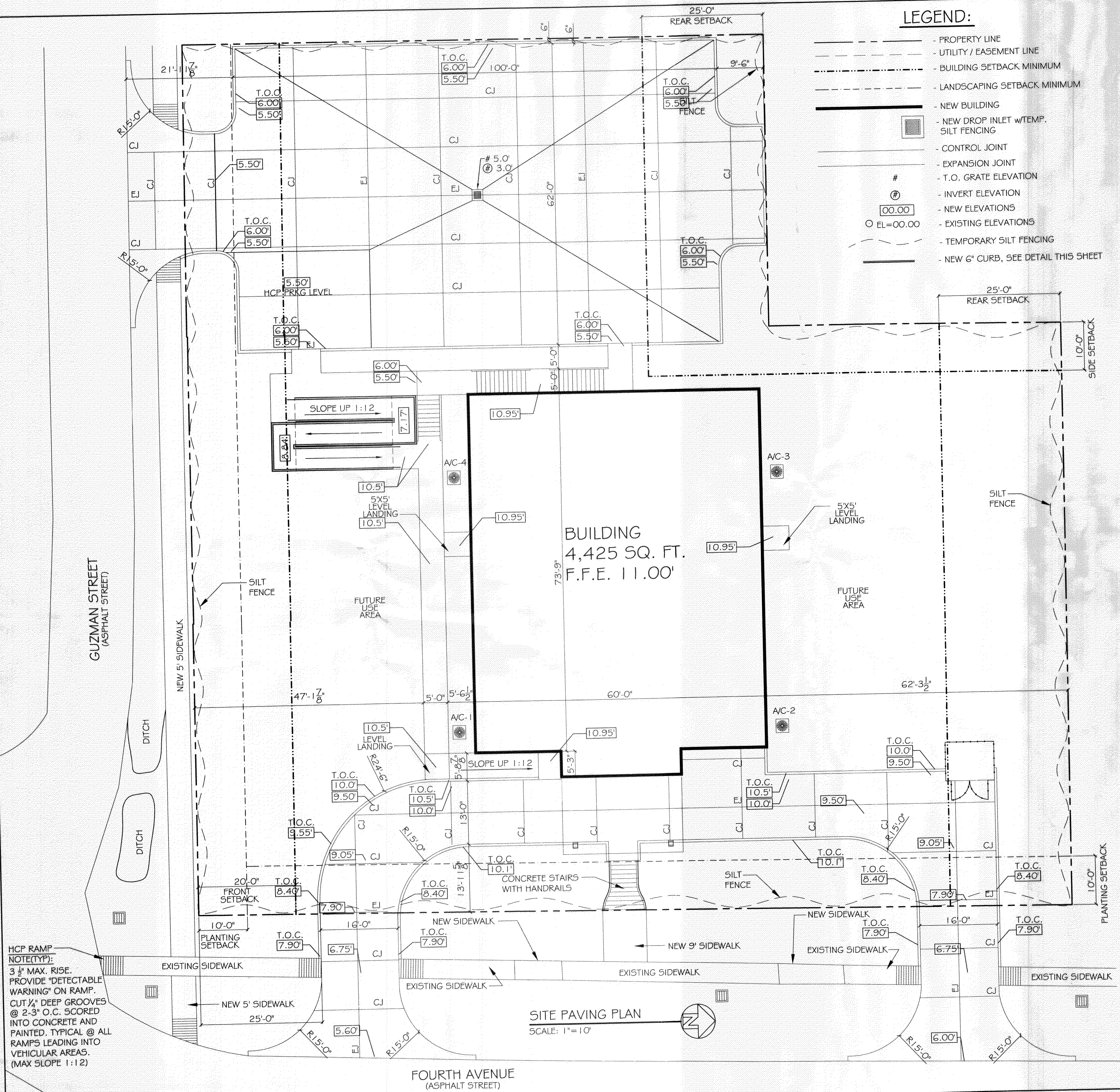
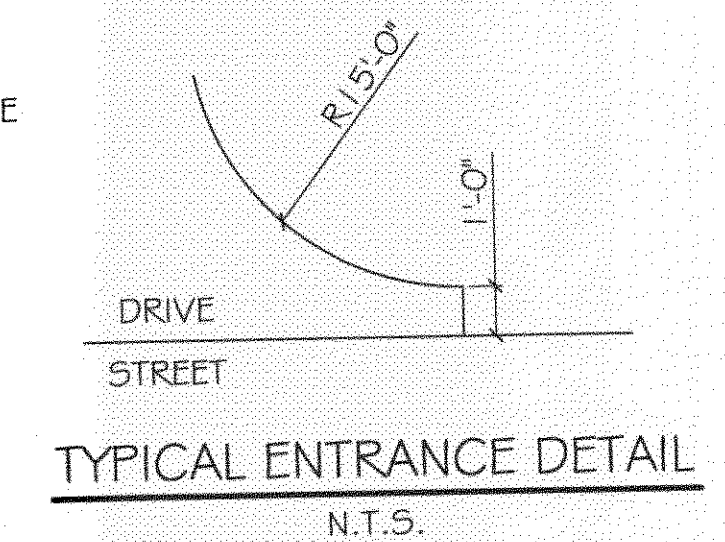
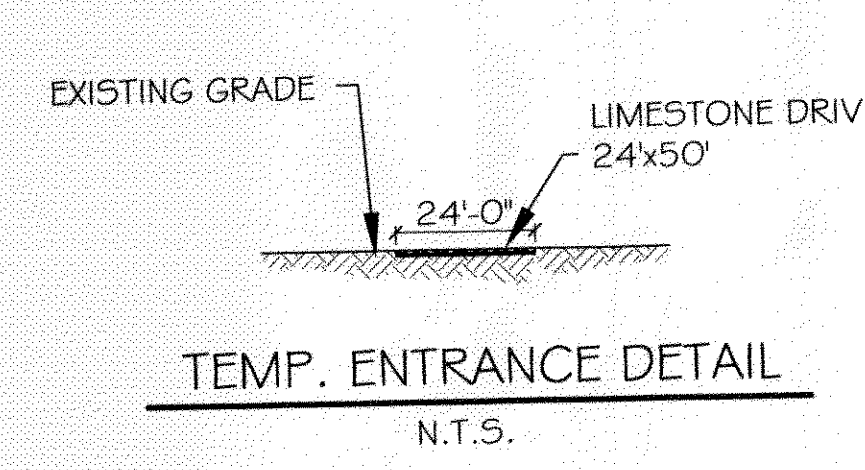
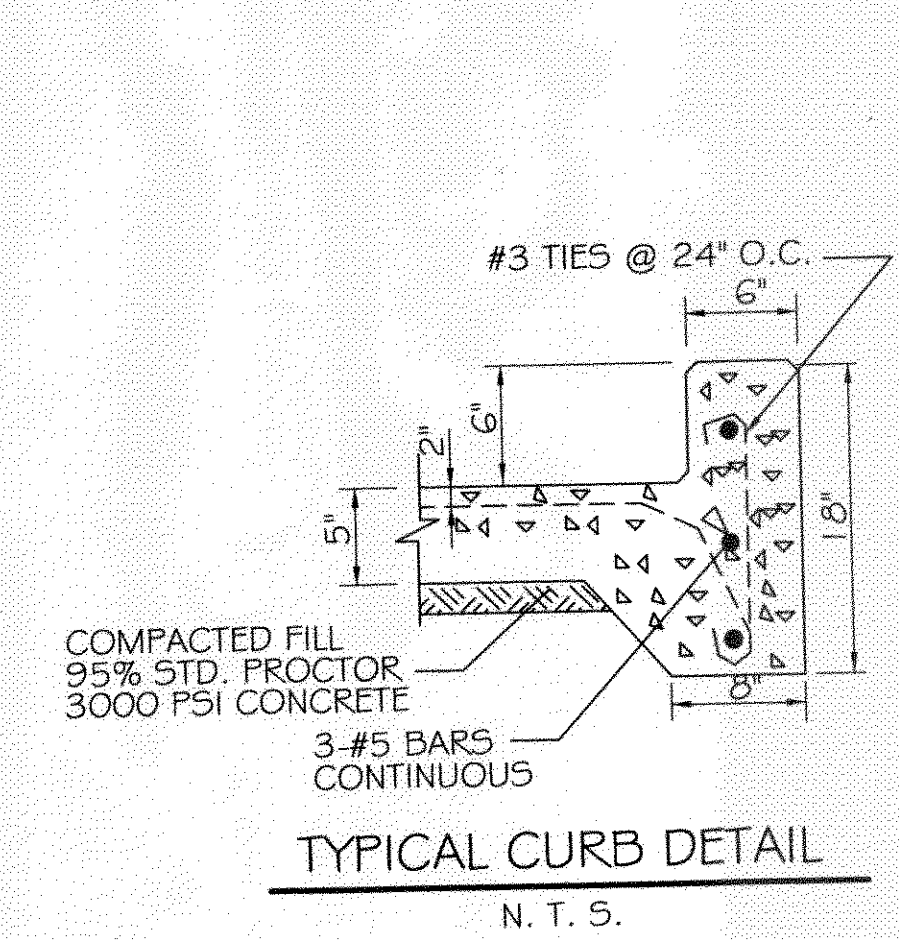
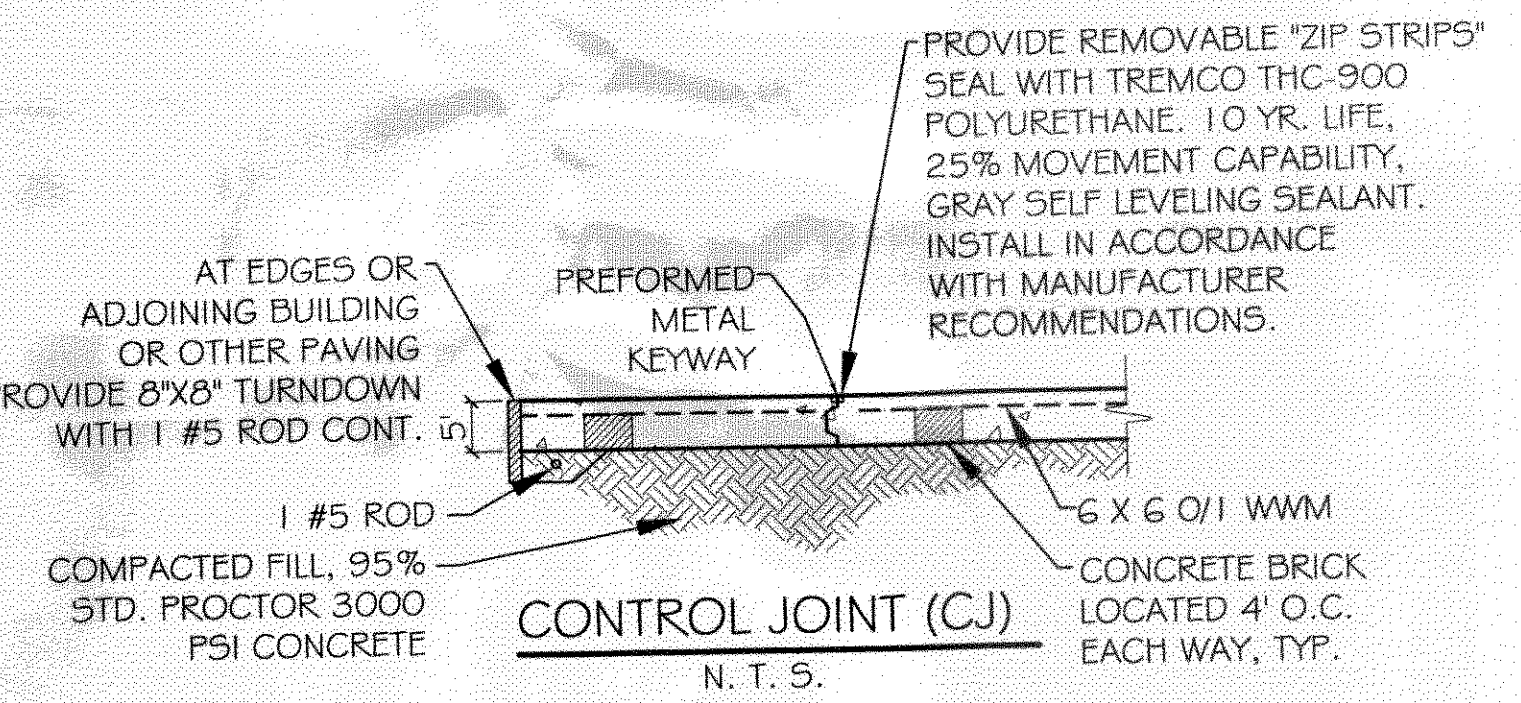
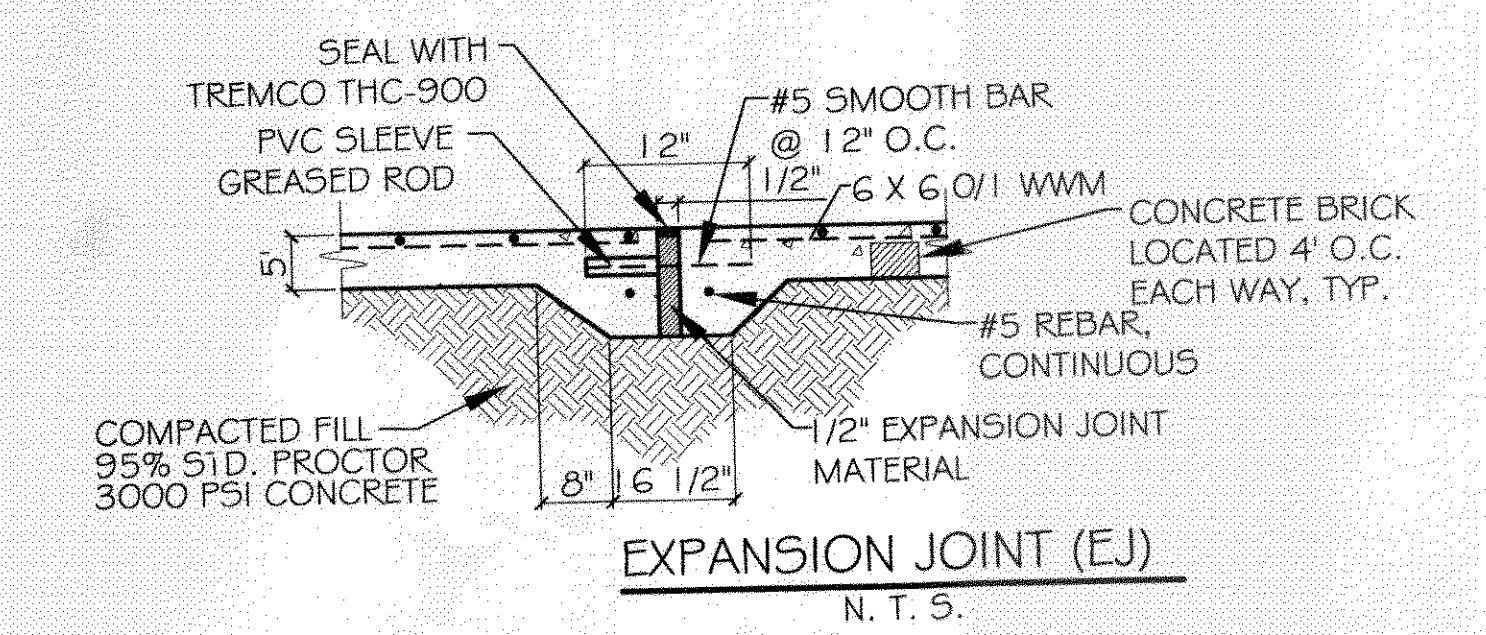
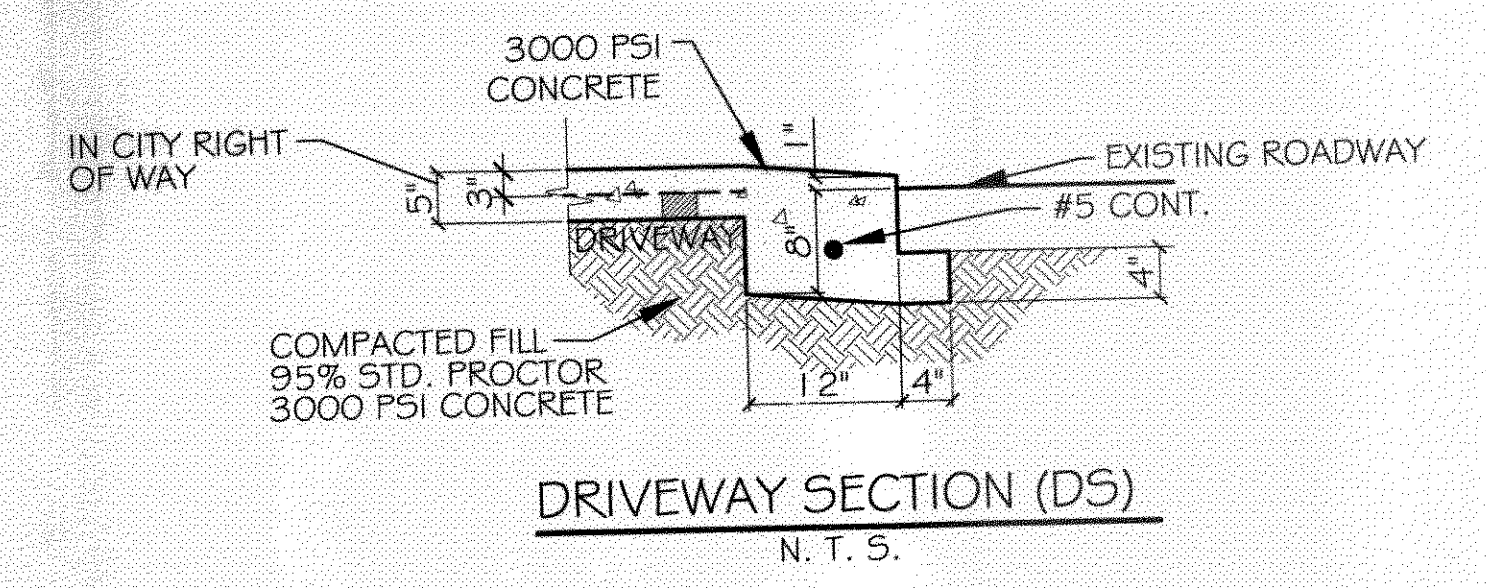
SHEET 8

C-7

OF 25

LEGEND:

- PROPERTY LINE
- UTILITY / EASEMENT LINE
- BUILDING SETBACK MINIMUM
- LANDSCAPING SETBACK MINIMUM
- NEW BUILDING
- NEW DROP INLET w/TEMP. SILT FENCING
- CONTROL JOINT
- EXPANSION JOINT
- T.O. GRATE ELEVATION
- INVERT ELEVATION
- NEW ELEVATIONS
- EXISTING ELEVATIONS
- TEMPORARY SILT FENCING
- NEW 6" CURB, SEE DETAIL THIS SHEET



HCP RAMP NOTE(TYP):
3/4" MAX. RISE.
PROVIDE "DETECTABLE WARNING" ON RAMP.
CUT 1/4" DEEP GROOVES @ 2-3" O.C. SCORED INTO CONCRETE AND PAINTED. TYPICAL @ ALL RAMP'S LEADING INTO VEHICULAR AREAS. (MAX SLOPE 1:12)

376923
REVIEWED FOR STATE FIRE MARSHAL AS PER REVIEW LETTER BY WILLIAM D. JONES, ARCHITECT CBO
William D. Jones

SITE PAVING PLAN
SCALE: 1"=10'