

DAMMON
ENGINEERING, INC.

CHIEF ENGINEER
EMMETT
DAMMON, P.E.

CHIEF ARCHITECT
ROBERT
WILTSE

1095 FLORIDA AVENUE
SLIDELL, LA. 70458
OFFICE: 985-649-5832
FAX: 985-641-5950

WEBSITE:
WWW.DAMMONENGINEERING.COM

EMAIL:
DAMMONENG@BELLSOUTH.NET

- ARCHITECTURE
- ENGINEERING
- STUDIES
- PLANNING
- INVESTIGATION
- EXPERT WITNESS

NEW
CHURCH

TABERNACLE
BAPTIST CHURCH
2445 FOURTH AVE.
SLIDELL, LA

SITE
DEMO



REV:

SCALE: AS NOTED

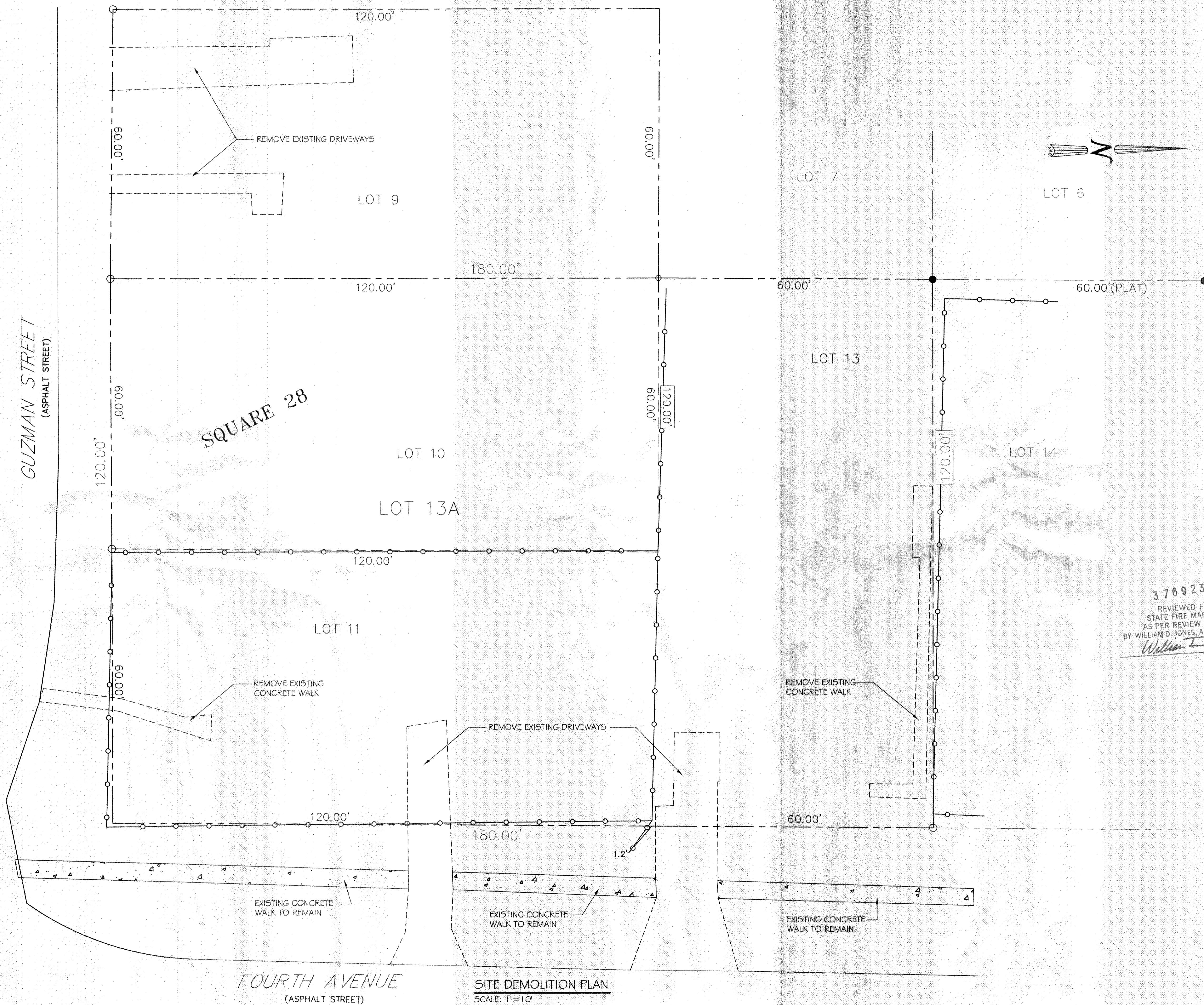
JOB#: 2050

DATE: 2-8-10

SHEET 10

D-1

OF 25



376923
 REVIEWED FOR
 STATE FIRE MARSHAL
 AS PER REVIEW LETTER
 BY: WILLIAM D. JONES, ARCHITECT, CBO
William D. Jones