

DAMMON ENGINEERING, INC.

CHIEF ENGINEER  
EMMETT  
DAMMON, P.E.

CHIEF ARCHITECT  
ROBERT  
WILTSE

1095 FLORIDA AVENUE  
SLIDELL, LA, 70458  
OFFICE: 985-649-5832  
FAX: 985-641-5950

WEBSITE:  
WWW.DAMMONENGINEERING.COM

EMAIL:  
DAMMONENG@BELL.SOUTH.NET

ARCHITECTURE  
ENGINEERING  
STUDIES  
PLANNING  
INVESTIGATION  
EXPERT WITNESS

376923

REVIEWED FOR  
STATE FIRE MARSHAL  
AS PER REVIEW LETTER  
BY WILLIAM D. JONES, ARCHITECT, C60  
*William D. Jones*

NEW  
CHURCH

TABERNACLE  
BAPTIST  
CHURCH  
2445 FOURTH AVE.  
SLIDELL, LA

ELECTRICAL  
LIGHTING PLAN



REV: *Robert Wiltse*

SCALE: AS NOTED

JOB#: 2050

DATE: 2-8-10

SHEET 23

E-2

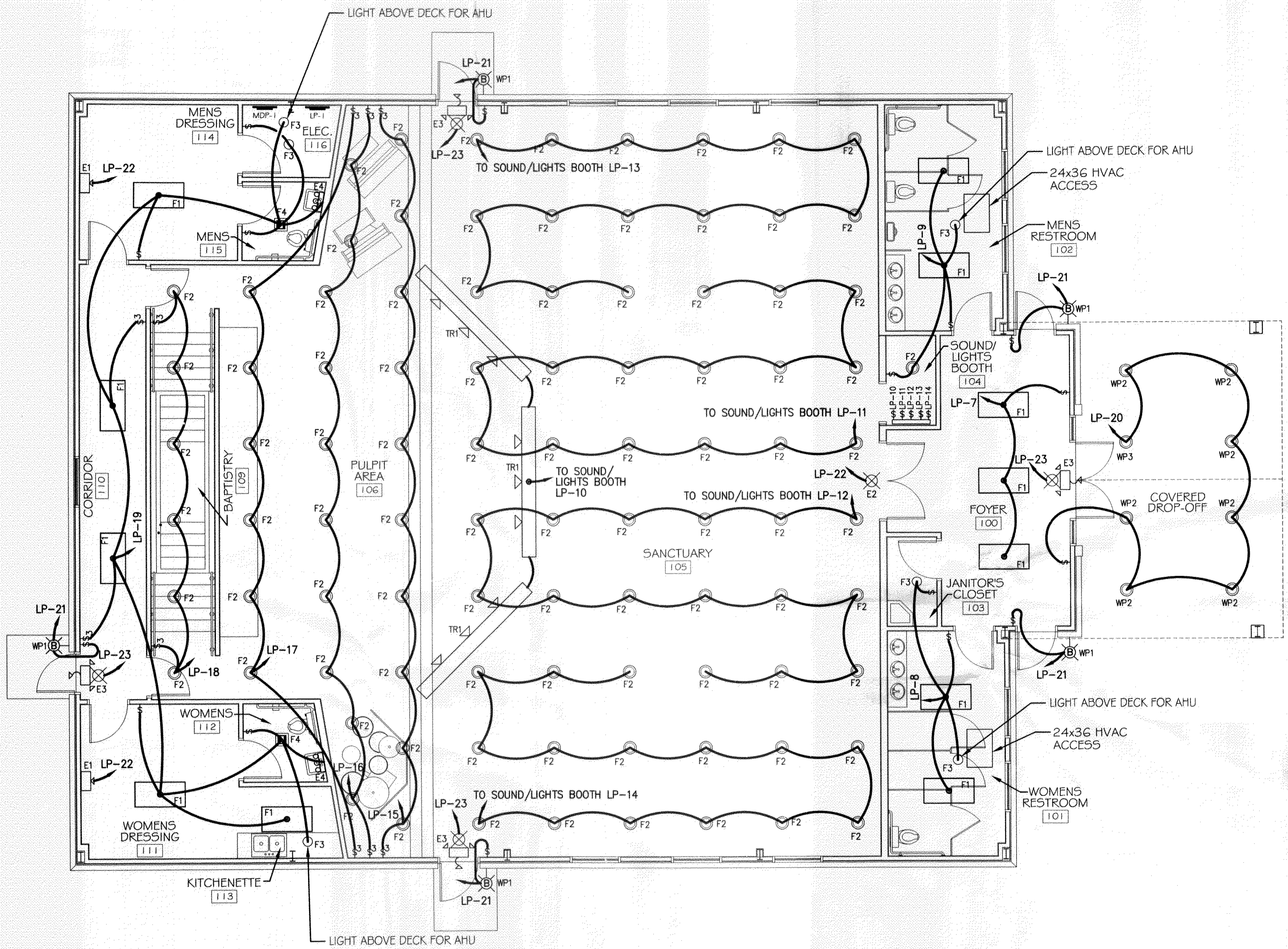
OF 25

LEGEND

- F1 ○ - 2x4' FLUORESCENT LIGHT (128W)
- F2 ○ - CAN LIGHT (90W)
- F3 ○ - SURFACE MTD. FIXTURE (100W)
- F4 □ - EXHAUST VENT/LIGHT COMBO (100W)
- E1 □ - EMERGENCY LIGHT W/ 90 MIN. BATTERY BACKUP (12W)
- E2 ⊗ - LOW LEVEL MOUNTED EXIT LIGHT/SIGN W/90 MIN. BATTERY BACK-UP (10W)
- E3 ⊗ - EXIT/EMERGENCY LIGHT COMBO W/ 90 MIN. BATTERY BACKUP AND REMOTE TO EXTERIOR (12W)
- E4 ⊗ - 3 BULB LIGHT BAR (60W EA BULB)
- TR1 ▽ - DIRECTIONAL TRACK STAGE LIGHTING 400W PER FIXTURE (1200W TOTAL)
- WP1 ⊗ - EXTERIOR WEATHERPROOF WALL MOUNTED LIGHT W/ 90 MIN. BATTERY BACKUP (100W)
- WP2 ○ - EXTERIOR WEATHERPROOF CAN LIGHT (90W)
- WP3 ○ - EXTERIOR WEATHERPROOF CAN LIGHT W/ 90 MIN. BATTERY BACKUP (90W)
- ⊙ - JUNCTION BOX
- ⌘ - SWITCH
- ⌘3 - 3-WAY SWITCH
- ⌘4 - 4-WAY SWITCH
- - POWER PANEL

ELECTRICAL NOTES

1. ALL WORK SHALL CONFORM TO THE LATEST EDITION OF THE NATIONAL ELECTRICAL CODE, THE GOVERNING ELECTRICAL CODE AND ALL OTHER INSPECTION DEPARTMENTS HAVING JURISDICTION. OBTAIN CERTIFICATES OR APPROVAL WHERE REQUIRED.
2. ALL MATERIALS FURNISHED SHALL BE NEW AND SHALL BE U.L. LISTED.
3. THE DRAWINGS INDICATE SIZE AND GENERAL LOCATION OF WORK. SCALE DIMENSIONS SHALL NOT BE USED. THE EXACT LOCATION AND LOCATION OF ALL LIGHTING FIXTURES, RECEPTACLES AND TELEPHONE OUTLETS, ETC. SHALL BE DETERMINED BY ACTUAL CONDITIONS IN THE FIELD. PRIOR TO BIDDING, CONTRACTOR SHALL VISIT THE JOB SITE AND FAMILIARIZE THEMSELVES WITH THE EXISTING CONDITIONS.
4. ELECTRICAL CONTRACTOR SHALL COORDINATE HIS WORK WITH OTHER TRADES AND WITH OTHER CONTRACTORS WHOSE WORK MAY AFFECT THIS INSTALLATION.
5. ELECTRICAL CONTRACTOR SHALL COORDINATE INCOMING ELECTRICAL SERVICE WITH UTILITY COMPANY AND INCLUDE IN HIS BID ALL CHARGES AND FEES INCURRED IN MODIFICATIONS.
6. WHERE MORE THAN ONE SWITCH OCCURS IN THE SAME LOCATION, THEY SHALL BE INSTALLED IN A GANG TYPE BOX UNDER ONE COVER PLATE.
7. ELECTRICAL CONTRACTOR SHALL COORDINATE THE TELEPHONE INSTALLATION WITH THE TELEPHONE COMPANY AND THE GENERAL CONTRACTOR.
8. ELECTRICAL CONTRACTOR, BEFORE INSTALLING ANY OF THE WORK, SHALL SEE THAT IT DOES NOT INTERFERE WITH CLEARANCES REQUIRED FOR FINISHED COLUMNS, HUNG CEILINGS, PLASTER PARTITIONS, WALLS, ETC. AS SHOWN IN THE ARCHITECTURAL DRAWINGS AND DETAILS. IF ANY WORK IS INSTALLED AND IT LATER DEVELOPS THAT SUCH DETAILS OR DESIGN CANNOT BE FOLLOWED, THE CONTRACTOR, AT HIS OWN EXPENSE, SHALL MAKE SUCH CHANGES IN THE WORK AS DIRECTED BY THE ARCHITECT. AS WELL AS TO PERMIT THE INSTALLATION OF THE ARCHITECTURAL WORK AS SHOWN ON THE PLANS AND DETAILS.
9. PERFORM TEST REQUIRED BY THE OWNER OR THE ENGINEER IN CONNECTION WITH THE OPERATION OF THE ELECTRICAL SYSTEM IN THE BUILDING.
10. ALL TESTS SHALL BE MADE IN ACCORDANCE WITH THE LATEST STANDARD OF THE IEEE AND THE NATIONAL ELECTRICAL CODE.
11. MINIMUM CONDUCTOR SIZE SHALL BE #12, 600V INSULATION. MINIMUM SIZE CONDUIT SHALL BE 3/4" EMT FOR INTERIOR USE, AND 3/4" RIGID ALUMINUM OR PVC SCHEDULE 80 FOR EXTERIOR USE. USE TYPE NMC CABLE COPPER, FOR LIGHTS AND RECEPTACLE CIRCUITS. EXTERIOR FITTINGS SHALL BE CAST BOXES AND COVERS. INTERIOR FITTINGS SHALL BE CAST WHERE EXPOSED ON WALLS. STAMPED BOXES MAY BE USED ABOVE CEILINGS IN AIR CONDITIONED SPACES. WHERE LAY IN FIXTURES ARE IN USE, USE 1 1/2" ALLOWED FOR 6" WIDTH.
12. CONTRACTOR SHALL INSTALL WIRING AND OTHER CIRCUIT COMPONENTS TO MATCH EQUIPMENT ACTUALLY INSTALLED.
13. INSTALL GROUND FAULT RECEPTACLES AT RECEPTACLE LOCATIONS WITHIN 5' OF SINKS OR LAVATORIES, AND AT EXTERIOR LOCATIONS. EXTERIOR RECEPTACLES SHALL ALSO BE WATERPROOF.
14. BONDING AND GROUNDING SHALL BE IN ACCORDANCE WITH NFPA 70:250-63, NFPA 250-23, 250-71 & 250-72.
15. GROUND NEUTRAL IN ACCORDANCE WITH NFPA 70:250-23b.
16. FUSES SHALL BE ITT CLASS K5, 250 VOLT, 200,000 AMP INTERRUPTING CAP.
17. PROVIDE SERVICES OF A FIRE/SMOKE DETECTION AND ALARM COMPANY TO DESIGN AND INSTALL ALARM SYSTEM TO MEET REQUIREMENTS OF THE STATE FIRE MARSHAL.
18. EXTERIOR LIGHTING SHALL BE SHADED OR INWARDLY DIRECTED IN SUCH A MANNER SO THAT NO DIRECT LIGHTING OR GLARE IS CAST BEYOND THE PROPERTY LINE. THE INTENSITY OF SUCH LIGHTING SHALL NOT EXCEED ONE FOOT CANDLE AS MEASURED AT THE ADJUTING PROPERTY LINE.
19. ALL ELECTRICAL, MECHANICAL AND PLUMBING PENETRATING FIRE PARTITIONS SHALL BE FIRE CAULKED. (PENETRATIONS THROUGH RATED CONSTRUCTION SHALL BE SEALED WITH A MATERIAL CAPABLE OF PREVENTING THE PASSAGE OF FLAMES AND HOT GASES WHEN TESTED IN ACCORDANCE WITH ASTM E114.)
20. THE ELECTRICIAN SHALL INSTALL A GROUND PATH FOR FAULT CURRENT BY INSTALLING A METAL RACEWAY SYSTEM OR A CABLE HAVING A METALLIC ARMOR OR SHEATH ASSEMBLY FOR ALL RECEPTACLES AND FIXED ELECTRIC EQUIPMENT IN ALL PATIENT AREAS.
21. THE ELECTRICIAN SHALL CONNECT THE GROUNDING TERMINALS OF ALL RECEPTACLES AND ALL NON-CURRENT-CARRYING CONDUCTIVE SURFACES OF FIXED ELECTRIC EQUIPMENT LIKELY TO BECOME ENERGIZED THAT ARE SUBJECT TO PERSONAL CONTACT, OPERATING AT OVER 100 VOLTS UTILIZING AN INSULATED COPPER CONDUCTOR IN ALL AREAS USED FOR PATIENT CARE.



ELECTRICAL LIGHTING PLAN  
SCALE: 3/16"=1'