

DAMMON
ENGINEERING, INC.

CHIEF ENGINEER
EMMETT
DAMMON, P.E.

CHIEF ARCHITECT
ROBERT
WILTSE

1095 FLORIDA AVENUE
SLIDELL, LA. 70458
OFFICE: 985-649-5832
FAX: 985-641-5950

WEBSITE:
WWW.DAMMONENGINEERING.COM

EMAIL:
DAMMONENG@BELLSOUTH.NET

ARCHITECTURE
ENGINEERING
STUDIES
PLANNING
INVESTIGATION
EXPERT WITNESS

NEW
CHURCH

TABERNACLE
BAPTIST
CHURCH
2445 FOURTH AVE.
SLIDELL, LA

MECHANICAL
PLAN

REV:

SCALE: AS NOTED

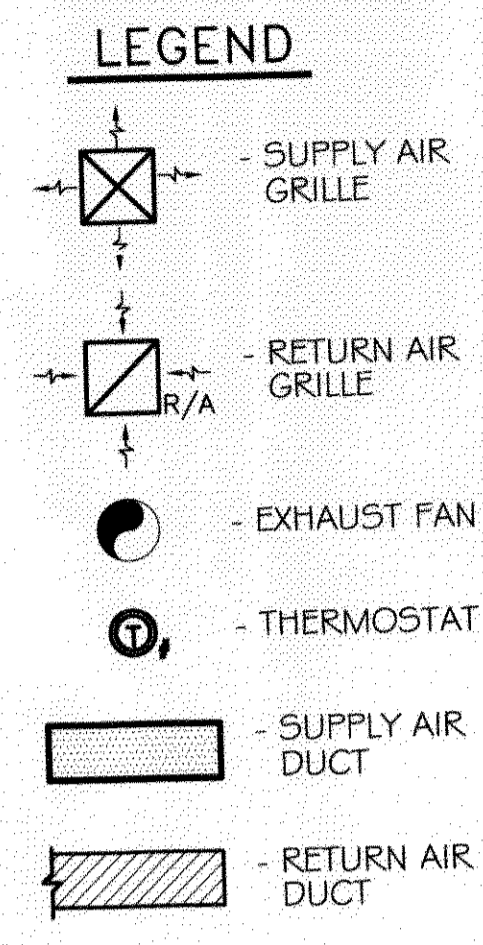
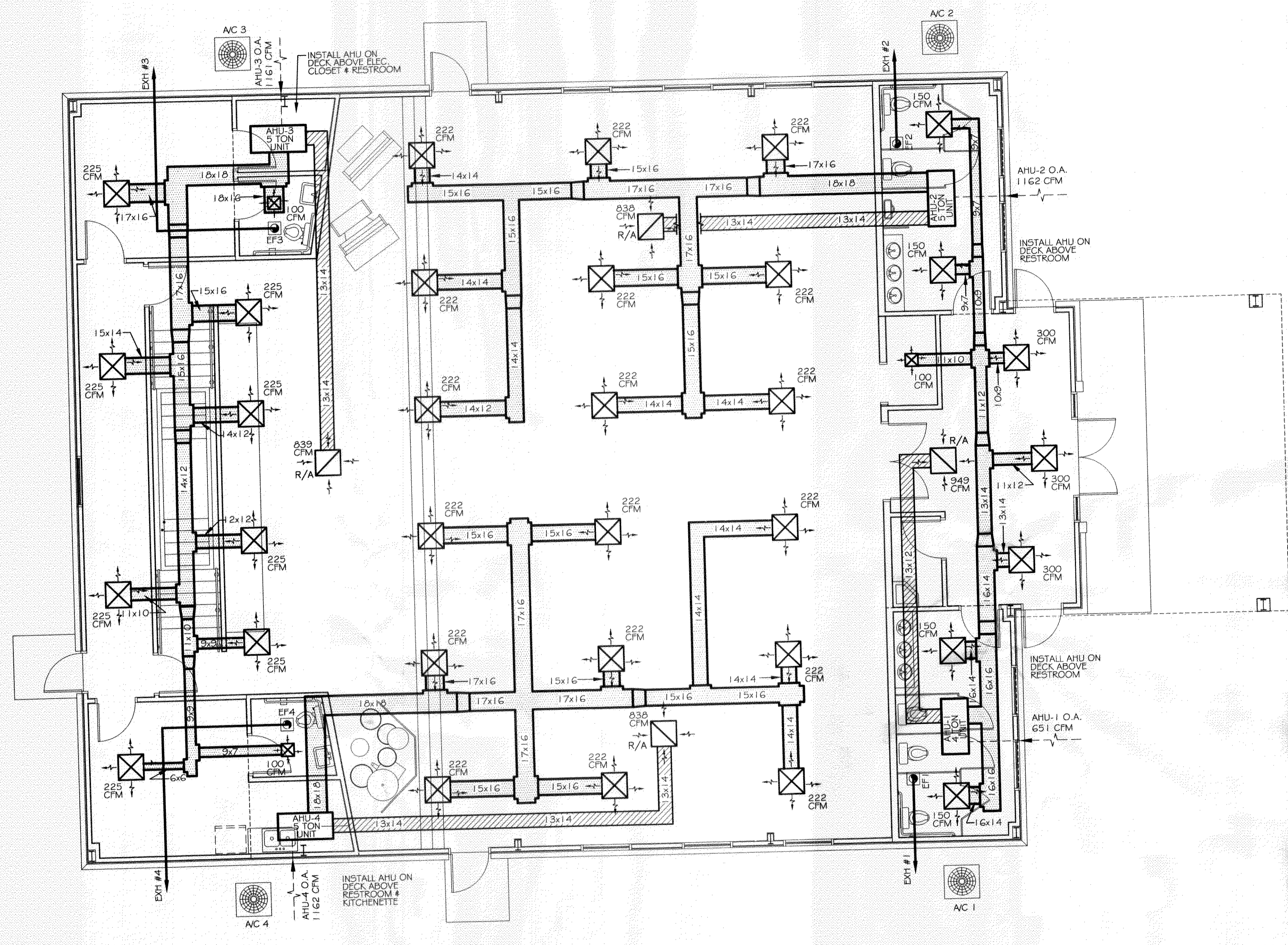
JOB#: 2050

DATE: 2-8-10

SHEET 20

M-1

OF 25



MECHANICAL PLAN
SCALE: 3/16"=1'

376923
REVIEWED FOR
STATE FIRE MARSHAL
AS PER REVIEW LETTER
BY WILLIAM D. JONES, ARCHITECT, CBO
William Jones

NO.	LOCATION	CFM	VOLTAGE	TYPE	MANF.
EF1	WOMENS RESTROOM 101	300	120	VENT	BROAN
EF2	MENS RESTROOM 102	300	120	VENT	BROAN
EF3	MENS RESTROOM 113	100	120	VENT	BROAN
EF4	WOMENS RESTROOM 111	100	120	VENT	BROAN

NO.	TOTAL BTU	CFM	O.A.	HEAT ELEC.	ELECTRICAL		COMMENTS
					VOLTAGE	MCA	
AC 1	48,000 4 TON	1,600	651	15 KW	208V, 1Ø	-	MDP1-2,4,5,7,18,20 YORK (VERIFY WITH OWNER)
AC 2	60,000 5 TON	2,000	1162	15 KW	208V, 1Ø	-	MDP1-6,8,9,11,21,23 "
AC 3	60,000 5 TON	2,000	1161	15 KW	208V, 1Ø	-	MDP1-10,12,13,15,22,24 "
AC 4	60,000 5 TON	2,000	1162	15 KW	208V, 1Ø	-	MDP1-14,16,17,19,25,27 "