

DAMMON
ENGINEERING, INC.

CHIEF ENGINEER
BIMETT
DAMMON, P.E.
CHIEF ARCHITECT
ROBERT
WILTSE

1095 FLORIDA AVENUE
SUDDL, LA, 70458
OFFICE 985-649-5832
FAX 985-641-5950

WWW.DAMMONENGINEERING.COM
EMAIL: DAMMONENG@BELL.SOUTH.NET

ARCHITECTURE
ENGINEERING
STUDIES
PLANNING
INVESTIGATION
EXPERT WITNESS

NEW
CHURCH

TABERNACLE
BAPTIST CHURCH
2445 FOURTH ST.
SUDDL, LA

COPY OF
SURVEY

REV:

SCALE: AS NOTED

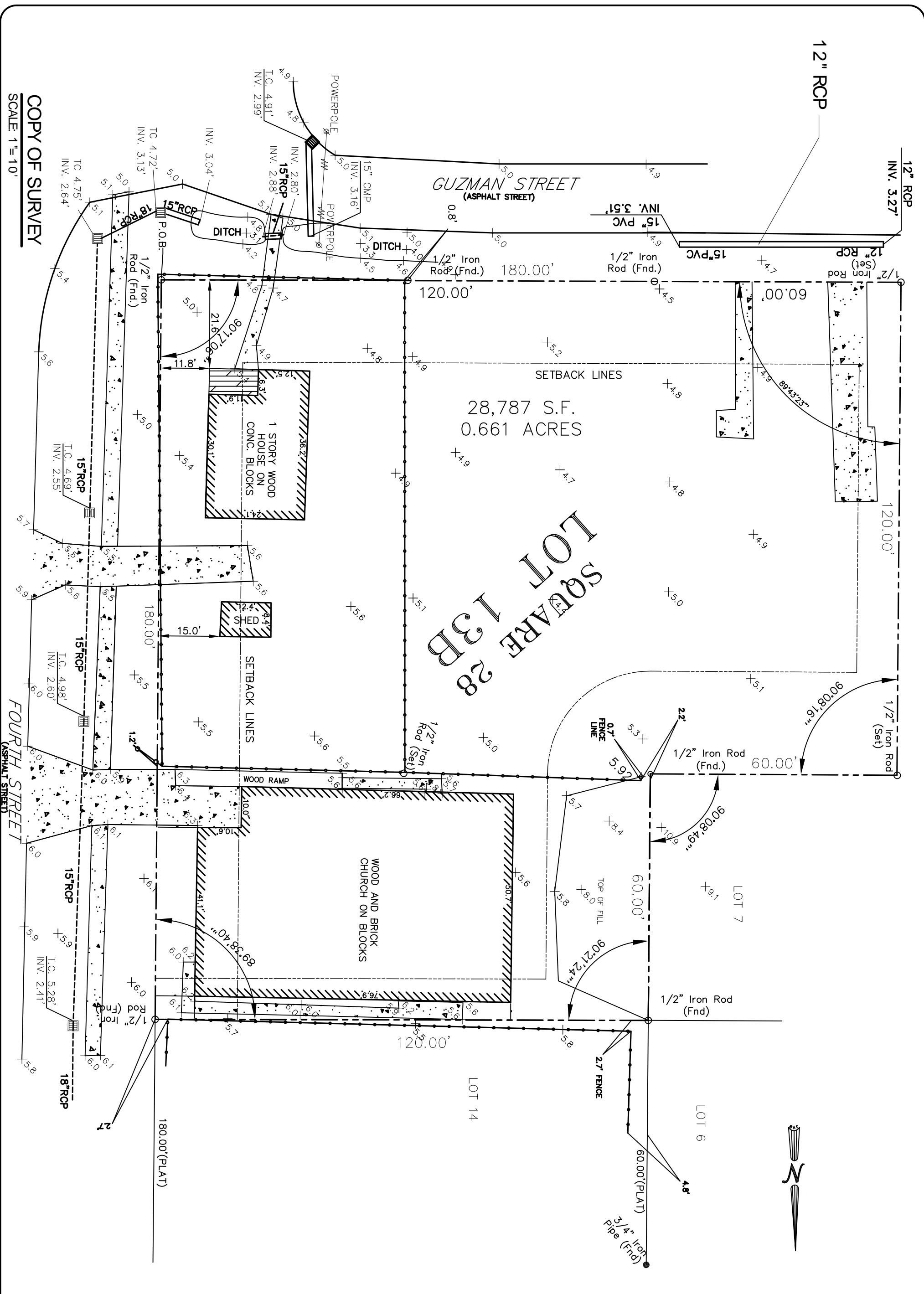
JOB#: 2050

DATE: 2-8-10

SHEET 2

C-1

OF 25



COPY OF SURVEY
SCALE 1"=10'