

PANEL: MDP-1  
 LOCATION: TABERNACLE BAPTIST CHURCH ELECTRICAL CLOSET  
 FEEDER SOURCE: QLEBO

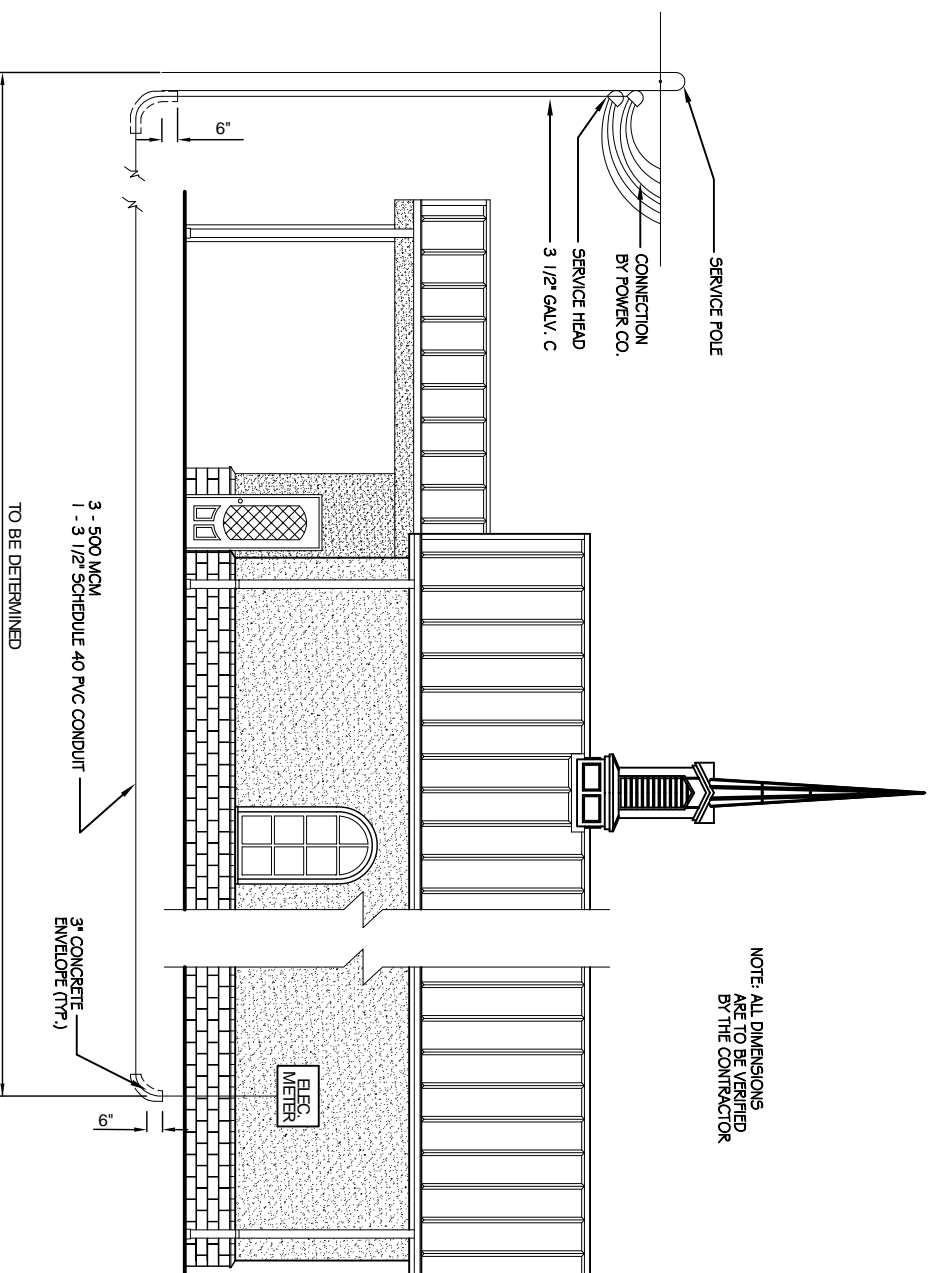
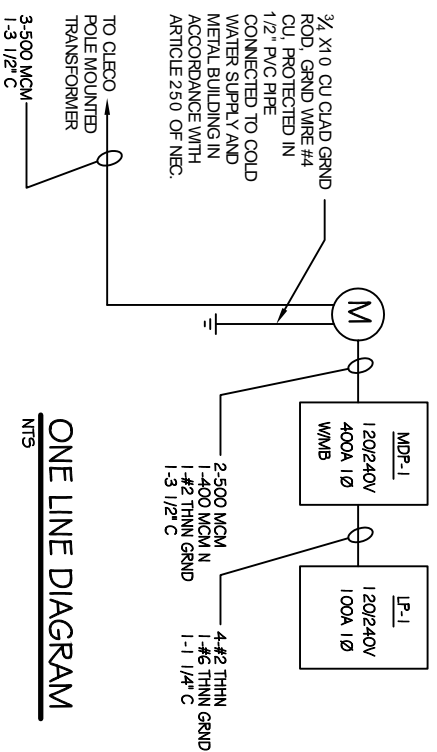
VOLTAGE: 120/240V, 400A 1Ø, 3W, WITH MAIN BRKR.  
 SURFACE MOUNTED WEQUIPMENT GND BAR

OCT. NO.	THIN SIZE	LOAD DESCRIPTION	BREAKER AMP	POLE	LOAD (VA)	LOAD (VA)	BREAKER AMP	POLE	LOAD DESCRIPTION	THIN SIZE	OCT. NO.
1	#2	LP-1	100	2	8548	5000	60	2	AHU #1	#6	4
3	#2	LP-1	100	2	8396	5000	60	2	AHU #1	#6	4
5	#6	AHU #1 5 KW	30	2	2500	5000	60	2	AHU #2 10 KW	#6	8
7	#6	AHU #1 5 KW	30	2	2500	5000	60	2	AHU #2 10 KW	#6	8
9	#6	AHU #2 5 KW	30	2	2500	5000	60	2	AHU #3 10 KW	#6	10
11	#6	AHU #2 5 KW	30	2	2500	5000	60	2	AHU #3 10 KW	#6	12
13	#6	AHU #3 5 KW	30	2	2500	5000	60	2	AHU #4 10 KW	#6	14
15	#6	AHU #3 5 KW	30	2	2500	5000	60	2	AHU #4 10 KW	#6	16
17	#8	AHU #4 5 KW	30	2	2500	7200	60	2	A/C COMPRESSOR #1 4 TON	#8	18
19	#8	AHU #4 5 KW	30	2	2500	7200	60	2	A/C COMPRESSOR #1 4 TON	#8	20
21	#8	A/C COMPRESSOR #2 5 TON	60	2	7200	7200	60	2	A/C COMPRESSOR #3 5 TON	#8	22
23	#8	A/C COMPRESSOR #2 5 TON	60	2	7200	7200	60	2	A/C COMPRESSOR #3 5 TON	#8	24
25	#8	A/C COMPRESSOR #4 5 TON	60	2	7200	2400	20	20	WATER HEATER 20 GALLON	#12	26
27	#8	A/C COMPRESSOR #4 5 TON	60	2	7200	2400	20	20	WATER HEATER 20 GALLON	#12	28
29	#12	WOMEN'S RESTROOM 101 & JANITORS CLOSET 103 GR RECEPICLES	20	1	320	1120	1	20	WOMEN'S 101, MEN'S 102, LIGHTS BOOTH 104, SANITARY 105, & HVAC DECKS RECEPICLES	#12	30
31	#12	FOYER 100 RECEPICLES	20	1	640	1120	1	20	SANITARY 105 RECEPICLES	#12	32
33	#12	SANCTUARY 105 RECEPICLES	20	1	1120	160	1	20	SANCTUARY 105 RECEPICLES	#12	34
35	#12	PLUTIFORMS AREA RECEPICLES	20	1	320	320	1	20	PLUTIFORMS AREA RECEPICLES	#12	36
37	#8	WATER HEATER 40 GALLON	30	2	3600	-	1	20	SPARE	#12	38
39	#8	WATER HEATER 40 GALLON	30	2	3600	-	1	20	SPARE	#12	40
41	#12	SPARE	20	1	-	-	1	20	SPARE	#12	42
					TOTAL CONNECTED LOAD (VA)= 151,664					GROUND BUS GROUND WIRE (G)	
					A0= 76,098					B0= 75,596	

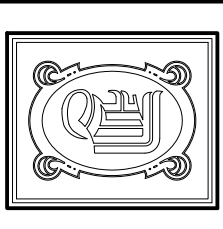
PANEL: LP-1  
 LOCATION: TABERNACLE BAPTIST CHURCH ELECTRICAL CLOSET  
 FEEDER SOURCE: QLEBO

VOLTAGE: 120/240 V, 100A 1Ø, 3W, MLO  
 SURFACE MOUNTED WEQUIPMENT GND BAR

OCT. NO.	THIN SIZE	LOAD DESCRIPTION	BREAKER AMP	POLE	LOAD (VA)	LOAD (VA)	BREAKER AMP	POLE	LOAD DESCRIPTION	THIN SIZE	OCT. NO.
1	#12	CORRIDOR 110, WOMEN'S DRESSING 111, ALCOVE 101, & HVAC DECK RECEPICLES	20	1	960	480	1	20	WOMEN'S 112 & KITCHENETTE 113 GR RECEPICLES	#12	2
3	#12	RECREATION RECEPICLE	20	1	160	800	1	20	MEN'S DRESSING 114, ALCOVE 108, & HVAC DECK RECEPICLES	#12	4
5	#12	MEN'S RESTROOM 115 GR RECEPICLE	20	1	160	960	1	20	EXTERIOR WEATHERPROOF GR RECEPICLES	#12	6
7	#12	FOYER 100 LIGHTS	20	1	384	456	1	20	WOMEN'S RESTROOM 101 & JANITORS CLOSET 103 LIGHTS, LIGHT ABOVE DECK	#12	8
9	#12	MEN'S RESTROOM 102 & SANITARY BOOTH 103 LIGHTS, LIGHT ABOVE DECK	20	1	448	1200	1	20	DIRECTIONAL STAGE TRACK LIGHTS	#12	10
11	#12	SANCTUARY 105 LIGHTS	20	1	1350	1350	1	20	SANCTUARY 105 LIGHTS	#12	12
13	#12	SANCTUARY 105 LIGHTS	20	1	1350	1350	1	20	SANCTUARY 105 LIGHTS	#12	14
15	#12	SANCTUARY LIGHTS AT PLUTIFORM AND STAGE AREAS	20	1	900	900	1	20	SANCTUARY LIGHTS AT PLUTIFORM AND STAGE AREAS	#12	16
17	#12	SANCTUARY LIGHTS AT CHOR STAGE AREA	20	1	540	540	1	20	SANCTUARY LIGHTS OVER BAPTISTRY 109	#12	18
19	#12	ROOMS NUMBER 110, 111, 112, 113, 114, 115, & 116 LIGHTS	20	1	1300	720	1	20	EXTERIOR COVERED DROROFF CAN LIGHTS	#12	20
21	#12	EXTERIOR WALL-MOUNTED FIXTURE LIGHTS AT DOOR EXITS/ENTRIES	20	1	500	34	1	20	EXT AND EMERGENCY LIGHTS	#12	22
23	#12	EMERGENCY LIGHT COMBO UNITS	20	1	48	-	1	20	SPARE	#12	24
25	#12	SPARE	20	1	-	-	1	20	SPARE	#12	26
27	#12	SPARE	20	1	-	-	1	20	SPARE	#12	28
29	#12	SPARE	20	1	-	-	1	20	SPARE	#12	30
31	-	SPACE	-	-	-	-	-	-	SPACE	-	32
33	-	SPACE	-	-	-	-	-	-	SPACE	-	34
35	-	SPACE	-	-	-	-	-	-	SPACE	-	36
37	-	SPACE	-	-	-	-	-	-	SPACE	-	38
39	-	SPACE	-	-	-	-	-	-	SPACE	-	40
41	-	SPACE	-	-	-	-	-	-	SPACE	-	42
					TOTAL CONNECTED LOAD (VA)= 16,944					GROUND BUS GROUND WIRE (G)	
					A0= 8,548					B0= 8,396	



NOTE: ALL DIMENSIONS  
 ARE TO BE VERIFIED  
 BY THE CONTRACTOR



**DAMMON**  
 ENGINEERING, INC.  
 CHIEF ENGINEER  
 EMMETT  
 DAMMON, P.E.  
 CHIEF ARCHITECT  
 ROBERT  
 WLTISE

1095 FLORIDA AVENUE  
 SUITE L.A. 70458  
 OFFICE: 905-649-5832  
 FAX: 905-641-5950

WWW.DAMMONENGINEERING.COM  
 EMAIL:  
 DAMMONENG@BELL.SOUTH.NET

ARCHITECTURE  
 ENGINEERING  
 STUDIES  
 PLANNING  
 INVESTIGATION  
 EXPERT WITNESSES

NEW  
 CHURCH

TABERNACLE  
 BAPTIST  
 CHURCH  
 2445 FOURTH ST.  
 SUDELL, LA

ELECTRICAL  
 SCHEDULES  
 & ONE-LINE  
 DIAGRAM

REV:  
 SCALE AS NOTED  
 JOB#: 2050  
 DATE: 2-8-10  
 SHEET 24

E-3

OF 25