

**GENERAL NOTES**

- INSULATION AND INSULATION ASSEMBLIES SHALL MEET THE REQUIREMENTS OF SECTION 7.19.
  - CONCEALED INSULATION SHALL HAVE A FLAME SPREAD OF 0-25 AND SMOKE DEVELOPED INDEX OF 0-450. EXCEPT THAT IN COMBUSTIBLE WOOD FRAMING CONSTRUCTION.
  - FACING SHALL COMPLY WITH IBC 2006.
- PROVIDE 5/8" LANDINGS LEVEL WITH FINISHED FLOOR, OUTSIDE EXTERIOR DOORS. THRESHOLDS SHALL BE NOT MORE THAN 1/2" IN HEIGHT AND SHALL BE BEVELED IF MORE THAN 1/4" VENER.
- DIMENSIONS ARE TO CENTERLINE FACE OF STUDS, CENTER OF COLUMNS, OR FACE OF VENER.
- CONTRACTOR TO VERIFY ALL SITE CONDITIONS, BUILDING LOCATIONS, AND DIMENSIONS PRIOR TO CONSTRUCTION.
- MATERIALS SHALL BE NEW AND U.L. LISTED.
- NO WORK SHALL BE CONCEALED UNTIL APPROVED BY LOCAL INSPECTORS.
- CONSTRUCTION SHALL COMPLY WITH ALL PARISH, STATE AND LOCAL CODES.
- CONTRACTOR TO GUARANTEE WORK FOR ONE YEAR.
- CONTRACTOR SHALL FURNISH WATER AND POWER FROM EXISTING SOURCES.
- EXTERIOR CAULK SHALL BE DOW CORNING 790 SILICONE. INSTALL IN ACCORDANCE WITH MANUFACTURER RECOMMENDATIONS. COORDINATE WITH ARCHITECT/OWNER AS TO COLOR. INTERIOR CAULKING TO BE EQUAL TO DAP PAINTABLE LATEX WITH SILICONE.
- PAINT GRADE TO SHALL BE SHERWIN WILLIAMS OR EQUIVALENT. ALL WORK TO RECEIVE 3 COATS. COLOR SELECTION BY OWNER.
- PROVIDE CLEANUP ON A REGULAR BASIS. NO TRASH STORED IN BUILDING.
- ALL BATT INSULATION SHALL HAVE A CLASS "A" (0-25) FLAME SPREAD IN COMPLIANCE WITH APPLICABLE CODE.
- USE 6" STUDS, OR 4" STAGGERED STUDS AT ALL PLUMBING WALLS.
- PROVIDE GALVANIZED METAL PAN WITH DRAIN AT WATER HEATER LOCATION.
- ALL CORNERS SHALL BE PROPERLY BRACED FOR WIND LOADS. A 48" SHEATHING SHALL BE PROVIDED EVERY 20 FEET OF WALL LENGTH.
- FLOORING SHALL BE NON-SLIP.
- INTERIOR LOCKS ON DOORS IN MEANS OF EGRESS SHALL NOT REQUIRE THE USE OF A KEY. SPECIAL KNOWLEDGE OR SPECIAL DEVICE TO OPEN IN THE DIRECTION OF EGRESS. ALL DOORS SHALL HAVE LEVER TYPE HANDLES.
- INTERIOR WALLS AND CEILINGS SHALL HAVE A FLAME SPREAD OF 0-200 AND A SMOKE DEVELOPMENT RATING OF 0-450.
- ALL WORK SHALL COMPLY WITH THE LATEST EDITION OF ALL LOCAL, STATE AND NATIONAL CODES COVERING THE TYPE OF WORK BEING PERFORMED.
- PROVIDE PORTABLE FIRE EXTINGUISHERS IN ACCORDANCE WITH NFPA 101. SEE APPENDIX "E" OF NFPA 101 FOR DISTRIBUTION OF EXTINGUISHERS.
- ALL FIRE WALLS SHALL EXTEND TIGHT TO ROOF SHEATHING, AND BE SEALED WITH AN APPROVED FIRE CAULK.
- ALL ELECTRICAL, MECHANICAL, AND PLUMBING MATERIALS PENETRATING FIRE WALLS SHALL BE FIRE CAULKED. (PENETRATIONS THROUGH RATED CONSTRUCTION SHALL BE SEALED WITH A MATERIAL CAPABLE OF PREVENTING THE PASSAGE OF FLAMES AND HOT GASES WHEN TESTED IN ACCORDANCE WITH ASTM-B314.)
- SERVICE COUNTER SHALL HAVE A HCP ACCESSIBLE WRITING SURFACE. MAX. 36" FROM F.F. (ADAAG MANUAL 1998, PG 135)

**DOOR & HARDWARE SCHEDULE**

NO.	SIZE	TYPE		FRAME	HINGE	LOOK	ACCESS.	REMARKS
		S.C. WD.	W GLASS					
1	PR 30X80	●	●	ALUMINUM	BUTT	PASSAGE	●	SEE NOTES
2	30X70	●	●	WOOD	NONE	DEADBOLT	●	REPAIR @ 101, 102
3	30X70	●	●	WOOD	NONE	KEYED HANDLE	●	REMOVE THE RATED DOOR @ 103
4	PR 30X80	●	●	WOOD	NONE	KEYED HANDLE	●	NOTE 7
5	30X70	●	●	WOOD	NONE	KEYED HANDLE	●	
6	30X70	●	●	WOOD	NONE	KEYED HANDLE	●	
7	30X70	●	●	WOOD	NONE	KEYED HANDLE	●	

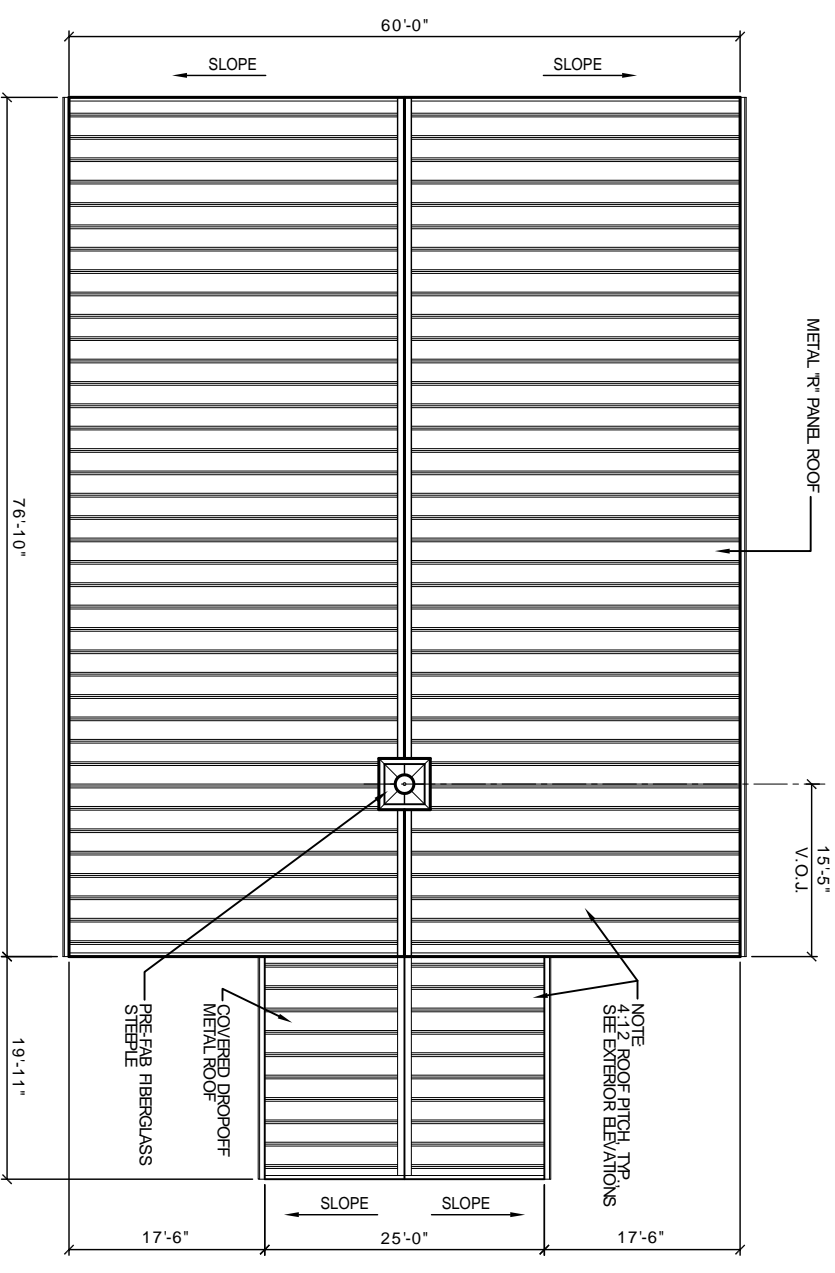
- DOOR & HARDWARE NOTES:**
- ALL GLAZING TO BE LAMINATED SAFETY GLASS.
  - DOOR HINGES TO BE STANLEY FULL MORRIS STANDARD WEIGHT, BALL BEARING HINGES, STAINLESS STEEL, WITH DARK BRONZE FINISH @ EXTERIOR & MATCHING DARK BRONZE FINISH ON STANDARD STEEL @ INTERIOR.
  - PROVIDE LEVER HANDLE ADA APPROVED LOCKSETS WITH MATCHING DARK BRONZE FINISH, TO BE SELECTED BY OWNER.
  - COORDINATE KEYS SCHEDULE WITH OWNER.
  - DOOR STOPS TO BE EQUAL TO IVES NO. 436 OR 437, AS REQUIRED IN MATCHING FINISH.
  - WEATHER-STRIP & THRESHOLD FINISH TO COMPLEMENT OTHER HARDWARE.
  - TWISTERS ONLY @ INTERIOR.

**ROOM FINISH SCHEDULE**

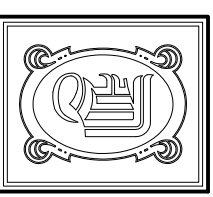
NAME	FLOOR	BASE	WALL	CEILING	REMARKS
100 VESTIBULE	VCT	CERAMIC TILE	GYP.BD. PAINTED	12'-0"	NOTE: METAL ADHESIVE RESISTANT WALLS ABOVE CERAMIC TILE IN RESTROOMS/BATHROOMS. HEIGHT AND ON WALLS ABOVE FIBERGLASS DIVISER.
101 WOMEN RESTROOM	CERAMIC TILE	CERAMIC TILE	M. R. GYP.BD. PAINTED	9'-0"	
102 MENS RESTROOM	CARPET	RUBBER BASE	CERAMIC TILE TO 42" HT.	9'-0"	
103 JANITORS CLOSET	FIBERGLASS	NONE	FIBERGLASS	9'-0"	
104 SANITATION BOOTH	NONE	NONE	2x2 LAY-IN	9'-0"	
105 SANITATION	NONE	NONE	SLOPED 2x2 LAY-IN	9'-0"	
106 PLAT AREA	NONE	NONE	GYP.BD. PAINTED	9'-0"	
107 ALCOVE	NONE	NONE	M. R. GYP.BD. PAINTED	9'-0"	
108 BATH	NONE	NONE	GYP.BD. PAINTED	9'-0"	
109 BATH	NONE	NONE	GYP.BD. PAINTED	9'-0"	
110 CORRIDOR	NONE	NONE	GYP.BD. PAINTED	9'-0"	
111 WOMENS DRESSING ROOM	NONE	NONE	GYP.BD. PAINTED	9'-0"	
112 WOMENS RESTROOM	NONE	NONE	GYP.BD. PAINTED	9'-0"	
113 WOMENS RESTROOM	NONE	NONE	GYP.BD. PAINTED	9'-0"	
114 MENS DRESSING ROOM	NONE	NONE	GYP.BD. PAINTED	9'-0"	
115 MENS RESTROOM	NONE	NONE	GYP.BD. PAINTED	9'-0"	
116 ELECTRICAL ROOM	NONE	NONE	GYP.BD. PAINTED	9'-0"	

**WINDOW SCHEDULE**

NO.	SIZE (WIDTH x HT)	TYPE	FRAME	GLASS	LITES	ACCESS.	REMARKS
1	40 X 80	FIXED	ALUMINUM	TEMPERED	2/4	●	SEE ELEVATIONS
2	40 X 80	SINGLE HUNG	ALUMINUM	TEMPERED	2/4	●	SEE ELEVATIONS
3	40 X 80	DOUBLE HUNG	ALUMINUM	TEMPERED	2/4	●	SEE ELEVATIONS
4	40 X 80	HORIZ. SLIDE	ALUMINUM	TEMPERED	2/4	●	SEE ELEVATIONS
5	40 X 80	ALUMINUM	ALUMINUM	TEMPERED	2/4	●	SEE ELEVATIONS
6	40 X 80	HOLLOW METAL	ALUMINUM	TEMPERED	2/4	●	SEE ELEVATIONS
7	40 X 80	WOOD	WOOD	TEMPERED	2/4	●	SEE ELEVATIONS
8	40 X 80	STEEL	STEEL	TEMPERED	2/4	●	SEE ELEVATIONS
9	40 X 80	STAINED GLASS	STEEL	TEMPERED	2/4	●	SEE ELEVATIONS
10	40 X 80	TEMPERED	STEEL	TEMPERED	2/4	●	SEE ELEVATIONS
11	40 X 80	TINTED	STEEL	TEMPERED	2/4	●	SEE ELEVATIONS
12	40 X 80	NONE	STEEL	TEMPERED	2/4	●	SEE ELEVATIONS
13	40 X 80	2/2	STEEL	TEMPERED	2/4	●	SEE ELEVATIONS
14	40 X 80	2/4	STEEL	TEMPERED	2/4	●	SEE ELEVATIONS
15	40 X 80	6/6	STEEL	TEMPERED	2/4	●	SEE ELEVATIONS
16	40 X 80	8/8	STEEL	TEMPERED	2/4	●	SEE ELEVATIONS
17	40 X 80	SEE ELEVATION	STEEL	TEMPERED	2/4	●	SEE ELEVATIONS
18	40 X 80	NONE	STEEL	TEMPERED	2/4	●	SEE ELEVATIONS
19	40 X 80	SCREEN	STEEL	TEMPERED	2/4	●	SEE ELEVATIONS
20	40 X 80	SHUTTER	STEEL	TEMPERED	2/4	●	SEE ELEVATIONS
21	40 X 80	ALARM	STEEL	TEMPERED	2/4	●	SEE ELEVATIONS
22	40 X 80	NONE	STEEL	TEMPERED	2/4	●	SEE ELEVATIONS
23	40 X 80	SEE ELEVATION	STEEL	TEMPERED	2/4	●	SEE ELEVATIONS
24	40 X 80	SEE ELEVATION	STEEL	TEMPERED	2/4	●	SEE ELEVATIONS



**ROOF PLAN**  
SCALE 1/8" = 1'



**DAMMON ENGINEERING, INC.**

CHIEF ENGINEER  
EMMETT DAMMON, P. E.  
CHIEF ARCHITECT  
ROBERT WILTSE

1095 FLORIDA AVENUE  
SLIDELL, LA. 70458  
OFFICE: 985-649-5832  
FAX: 985-641-5950

WWW.DAMMONENGINEERING.COM  
EMAIL: DAMMONENG@DELSOUTH.NET

ARCHITECTURE  
ENGINEERING  
STUDIES  
PLANNING  
INVESTIGATION  
EXPERT WITNESS

**NEW CHURCH**

TABERNACLE  
BAPTIST CHURCH  
2445 FOURTH ST.  
SLIDELL, LA

SCHEDULES,  
NOTES,  
AND  
ROOF PLAN

REV: 4-21-10

SCALE AS NOTED

JOB#: 2050

DATE 2-8-10

SHEET 13

**A-2**