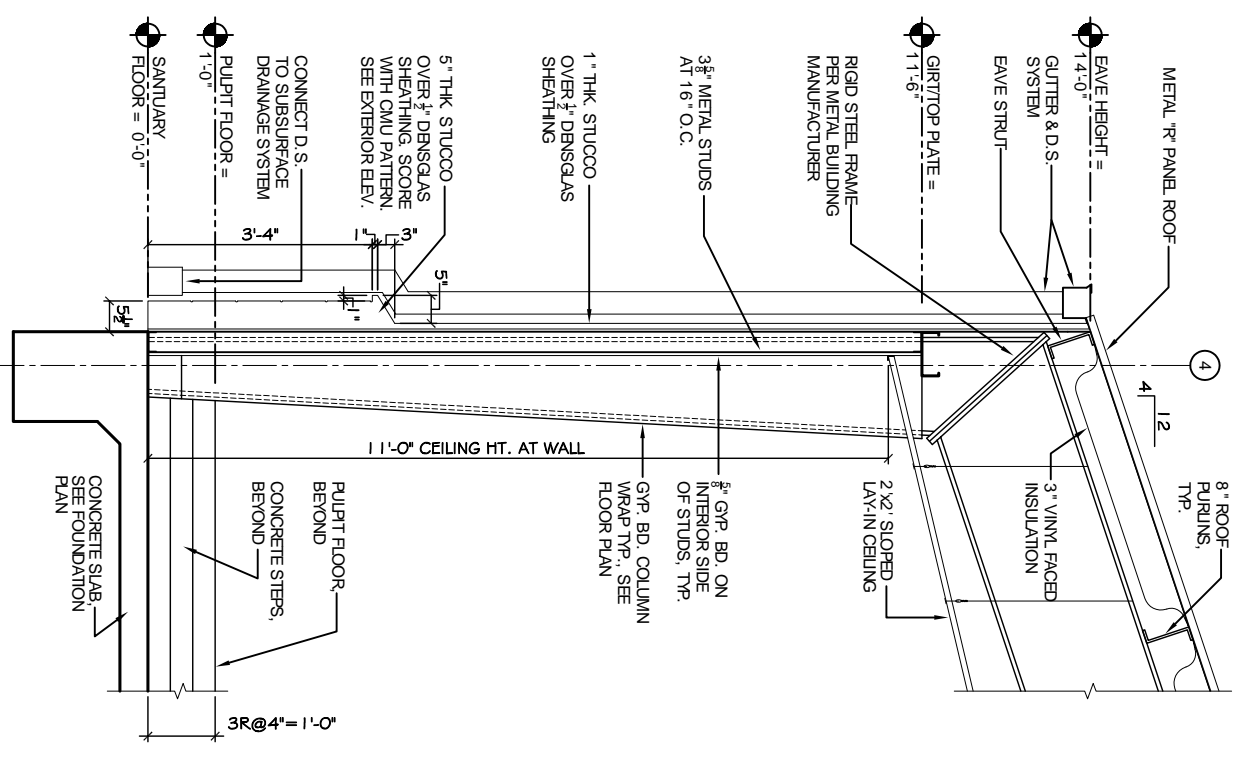
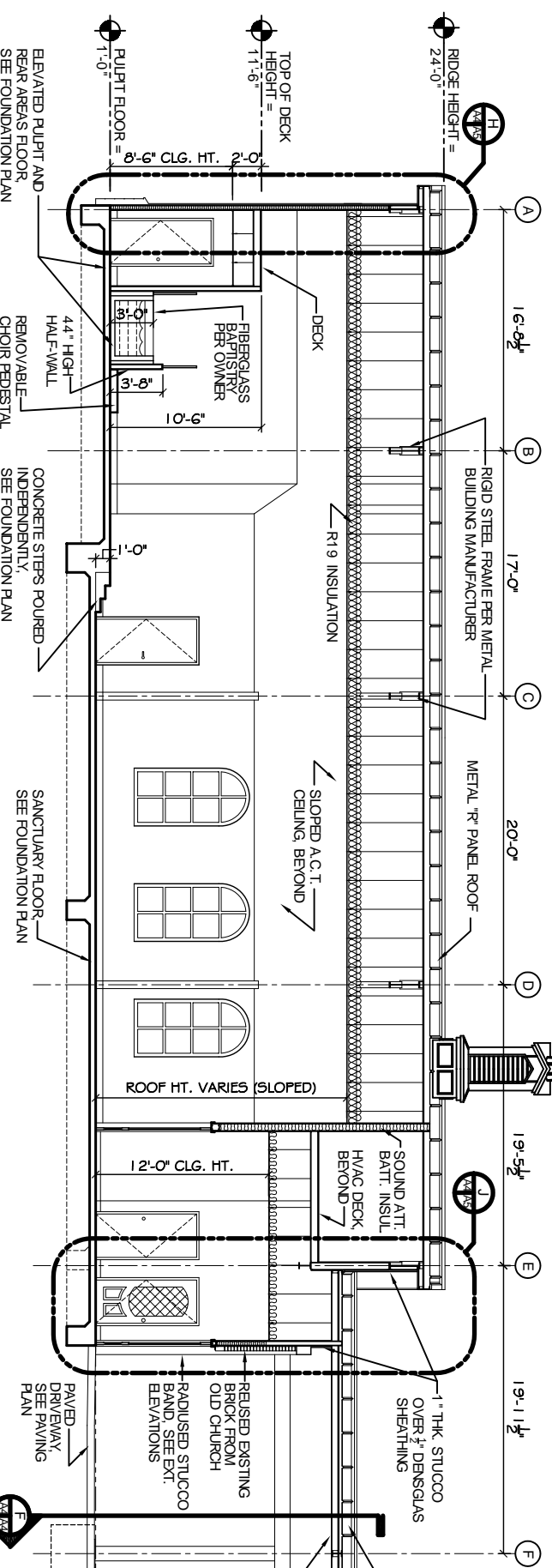


**BUILDING SECTION D**  
SCALE: 3/16" = 1'

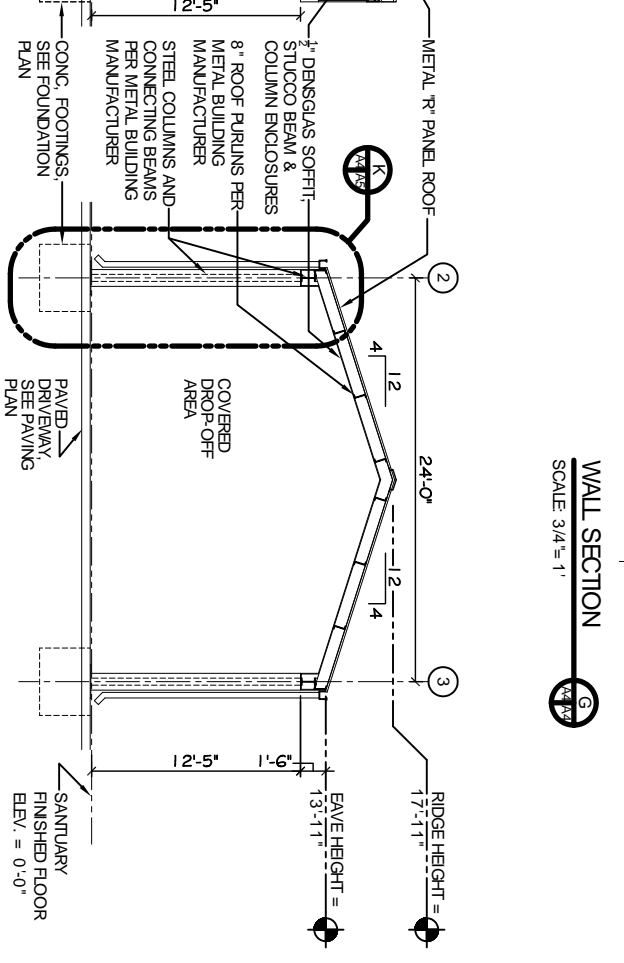
- EXTERIOR STUCCO SPECIFICATIONS:**
1. COMPLY WITH ASTM C-841 AND C-842. PROVIDE 3/4" OVERALL THICKNESS ON SELF-FURRING DIAMOND MESH GALVANIZED METAL LATH, 3.4 LB. PER SQUARE YARD, ON TYPER STUCCO WRAP. ATTACH LATH AT DIMPLES ONLY, WITH NON-CORROSIVE SCREWS.
  2. METAL LATH AND ALL ACCESSORIES TO BE EQUAL TO (MIMIC) TO INCLUDE CORNER BEADS, CASING BEADS, BASE SCREENS AND CONTROL JOINTS. ALL INSTALLED WITH NON-CORROSIVE SCREWS. ALL ACCESSORIES TO BE ZINC. ALL CORNERS TO BE MITERED.
  3. STUCCO TO BE INSTALLED IN THREE COATS. SCRATCH, BROWN AND FINISH. FINISH COAT TO BE ORIENTAL STUCCO WITH SAND FLOAT FINISH BY U.S. GYPSUM.
  4. COMPLY WITH MANUFACTURERS AND INDUSTRY RECOMMENDATIONS. INSTALL LATH IN ACCORDANCE WITH ASTM C-1063.
  5. SUBMIT DATA / CUT SHEETS FOR ALL ITEMS IF REQUIRED.



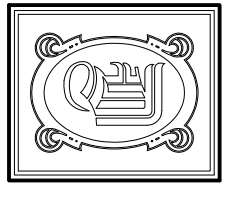
**WALL SECTION**  
SCALE: 3/4" = 1'



**BUILDING SECTION E**  
SCALE: 3/16" = 1'



**DRIVE-THRU CANOPY SECTION F**  
SCALE: 3/16" = 1'



**DAMMON ENGINEERING, INC.**

CHIEF ENGINEER  
EMMETT DAMMON, P.E.  
CHIEF ARCHITECT  
ROBERT WILTSE

1095 FLORIDA AVENUE  
SUITE LL, LA, 70458  
OFFICE: 985-649-5832  
FAX: 985-641-5950

WWW.DAMMONENGINEERING.COM  
EMAIL: DAMMONENR@BELL.SOUTH.NET

ARCHITECTURE  
ENGINEERING  
STUDIES  
PLANNING  
INVESTIGATION  
EXPERT WITNESS

**NEW CHURCH**

TABERNACLE  
BAPTIST  
CHURCH  
2445 FOURTH ST.  
SUDDL, LA

**BUILDING AND WALL SECTIONS**

REV:	
SCALE AS NOTED	
JOB#: 2050	
DATE: 2-8-10	
SHEET 15	
<b>A-4</b>	
OF 25	