

PANEL: MDP-1
 LOCATION: TABERNAACLE BAPTIST CHURCH ELECTRICAL CLOSET
 FEEDER SOURCE: CLECO

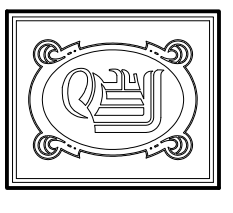
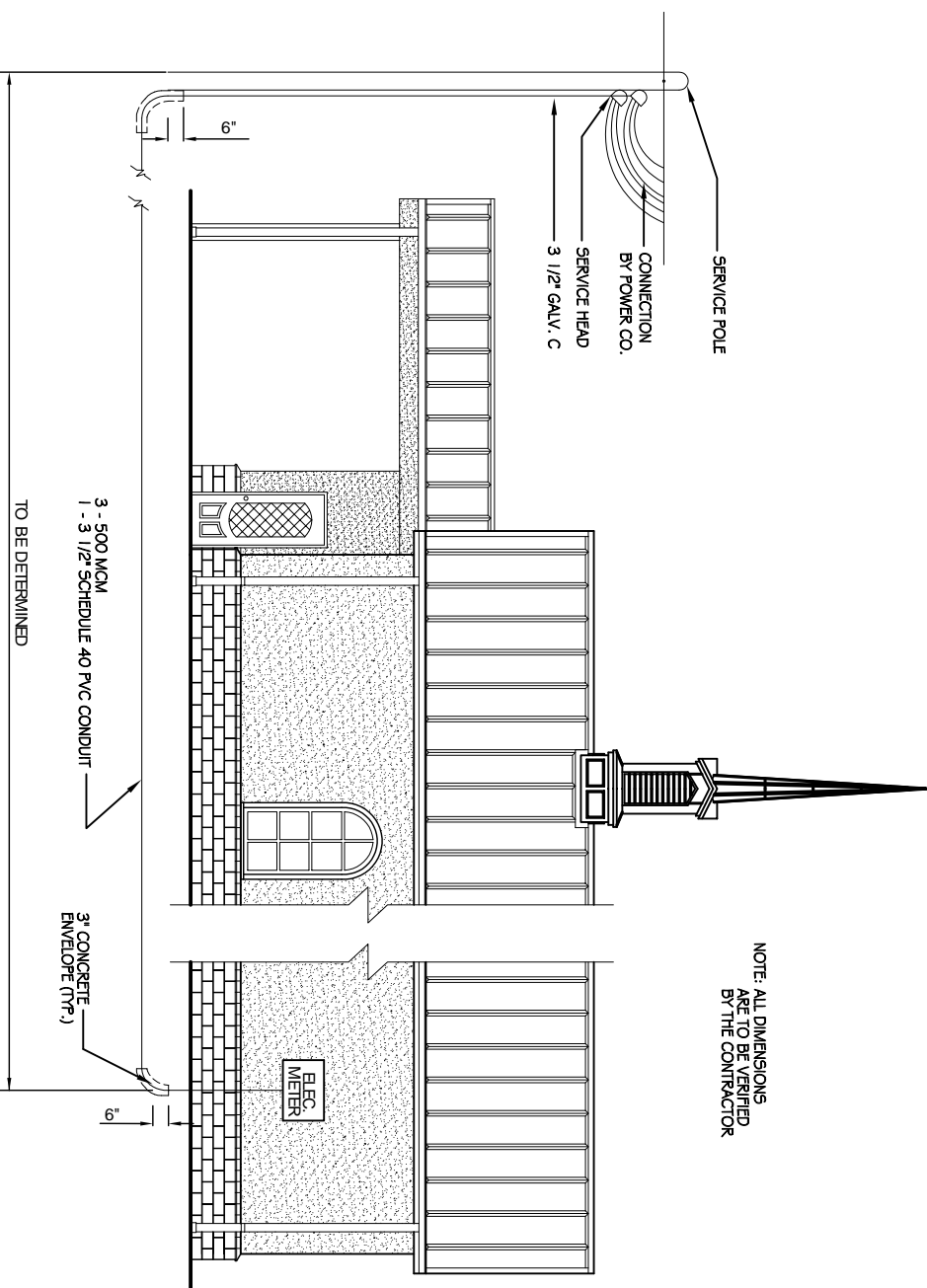
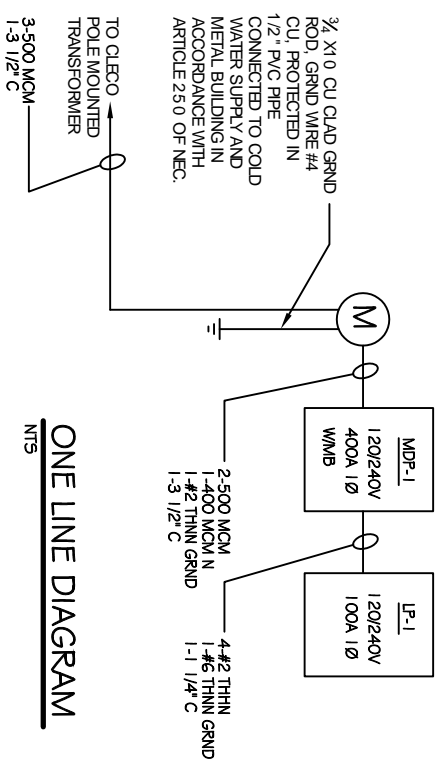
VOLTAGE: 120/240V, 400A 1Ø, 3W, WITH MAIN BRKR
 SURFACE MOUNTED WEQUIPMENT QND BAR

CKT NO.	THHN SIZE	LOAD DESCRIPTION	BREAKER AMP	POLE	LOAD (VA)	LOAD (VA)		BREAKER AMP	LOAD DESCRIPTION	THHN SIZE	CKT NO.	
						A0	B0					
1	#2	LP-1	100	2	8548	5000	5000	2	60	#6	2	
3	#2	LP-1	100	2	8396	5000	5000	2	60	#6	4	
5	#8	AHU#1 5 KW	30	2	2500	5000	5000	2	60	#6	6	
7	#8	AHU#1 5 KW	30	2	2500	5000	5000	2	60	#6	8	
9	#8	AHU#2 5 KW	30	2	2500	5000	5000	2	60	#6	10	
11	#8	AHU#2 5 KW	30	2	2500	5000	5000	2	60	#6	12	
13	#6	AHU#3 5 KW	30	2	2500	5000	5000	2	60	#6	14	
15	#6	AHU#3 5 KW	30	2	2500	5000	5000	2	60	#6	16	
17	#8	AHU#4 5 KW	30	2	2500	5000	5000	2	60	#8	18	
19	#8	AHU#4 5 KW	30	2	2500	5000	5000	2	60	#8	20	
21	#8	AC COMPRESSOR #2 5 TON	60	2	7200	7200	7200	2	60	#8	22	
23	#8	AC COMPRESSOR #2 5 TON	60	2	7200	7200	7200	2	60	#8	24	
25	#8	AC COMPRESSOR #4 5 TON	60	2	7200	7200	7200	2	60	#8	26	
27	#8	AC COMPRESSOR #4 5 TON	60	2	7200	7200	7200	2	60	#8	28	
29	#12	WOMEN'S RESTROOM 101 & JUNIORS CLOSET 103 GR RECEPTACLES	20	1	320	1120	1120	1	20	#12	30	
31	#12	FOYER 100 RECEPTACLES	20	1	640	1120	1120	1	20	#12	32	
33	#12	SANCTUARY 105 RECEPTACLES	20	1	1120	160	160	1	20	#12	34	
35	#12	PULPIT/ORGAN AREA RECEPTACLES	20	1	320	320	320	1	20	#12	36	
37	#8	WATER HEATER 40 GALLON	30	2	3600	-	-	1	20	#12	38	
39	#8	WATER HEATER 40 GALLON	30	2	3600	-	-	1	20	#12	40	
41	#12	SPARE	20	1	-	-	-	1	20	#12	42	
					TOTAL CONNECTED LOAD (VA)= 151,664							
					AO= 76,068	BO= 75,596						

PANEL: LP-1
 LOCATION: TABERNAACLE BAPTIST CHURCH ELECTRICAL CLOSET
 FEEDER SOURCE: CLECO

VOLTAGE: 120/240V, 100A 1Ø, 3W, MLO
 SURFACE MOUNTED WEQUIPMENT QND BAR

CKT NO.	THHN SIZE	LOAD DESCRIPTION	BREAKER AMP	POLE	LOAD (VA)	LOAD (VA)		BREAKER AMP	LOAD DESCRIPTION	THHN SIZE	CKT NO.	
						A0	B0					
1	#12	CORRIDOR 110, WOMEN'S DRESSING 111, ALCOVE 101, & HVAC DECK RECEPTACLES	20	1	960	480	480	1	20	#12	2	
3	#12	REFRIGERATOR RECEPTACLE	20	1	160	800	800	1	20	#12	4	
5	#12	MENS RESTROOM 115 GR RECEPTACLE	20	1	160	960	960	1	20	#12	6	
7	#12	FOYER 100 LIGHTS	20	1	384	456	456	1	20	#12	8	
9	#12	MENS RESTROOM 102 & SOUNDLIGHT BOOTH 101 LIGHTS, LIGHT ABOVE DESK	20	1	446	1200	1200	1	20	#12	10	
11	#12	SANCTUARY 105 LIGHTS	20	1	1350	1350	1350	1	20	#12	12	
13	#12	SANCTUARY 105 LIGHTS	20	1	1350	1350	1350	1	20	#12	14	
15	#12	SANCTUARY LIGHTS AT PULPIT 106 AND STAGE AREAS	20	1	900	900	900	1	20	#12	16	
17	#12	SANCTUARY LIGHTS AT CHOR STAGE AREA	20	1	540	540	540	1	20	#12	18	
19	#12	ROOM NUMBER 110, 111, 112, 113, 114, 115, & 116 LIGHTS	20	1	1300	720	720	1	20	#12	20	
21	#12	EXTERIOR WALL MOUNTED EXTERIOR LIGHTS AT DOOR EXITS/ENTRANCES	20	1	500	34	34	1	20	#12	22	
23	#12	EMERGENCY LIGHT COMBO UNITS	20	1	48	-	-	1	20	#12	24	
25	#12	SPARE	20	1	-	-	-	1	20	#12	26	
27	#12	SPARE	20	1	-	-	-	1	20	#12	28	
29	#12	SPARE	20	1	-	-	-	1	20	#12	30	
31	-	SPACE	-	-	-	-	-	-	-	-	32	
33	-	SPACE	-	-	-	-	-	-	-	-	34	
35	-	SPACE	-	-	-	-	-	-	-	-	36	
37	-	SPACE	-	-	-	-	-	-	-	-	38	
39	-	SPACE	-	-	-	-	-	-	-	-	40	
41	-	SPACE	-	-	-	-	-	-	-	-	42	
					TOTAL CONNECTED LOAD (VA)= 16,944							
					AO= 8,548	BO= 8,396						



DAMMON
 ENGINEERING, INC.
 CHIEF ENGINEER
 EMMETT
 DAMMON, P. E.
 CHIEF ARCHITECT
 ROBERT
 WILTSE

1095 FLORIDA AVENUE
 SLIDELL, LA. 70458
 OFFICE: 985-649-5832
 FAX: 985-641-5950

WEBSITE:
 WWW.DAMMONENGINEERING.COM

EMAIL:
 DAMMONENG@BELL-SOUTH.NET
 ARCHITECTURE
 ENGINEERING
 STUDIES
 PLANNING
 INVESTIGATION
 EXPERT WITNESS

NEW
 CHURCH
 TABERNAACLE
 BAPTIST
 CHURCH
 2445 FOURTH ST.
 SLIDELL, LA

ELECTRICAL
 SCHEDULES
 & ONE-LINE
 DIAGRAM

REV:
 SCALE: AS NOTED
 JOB#: 2050
 DATE: 2-8-10
 SHEET 24
E-3
 OF 25