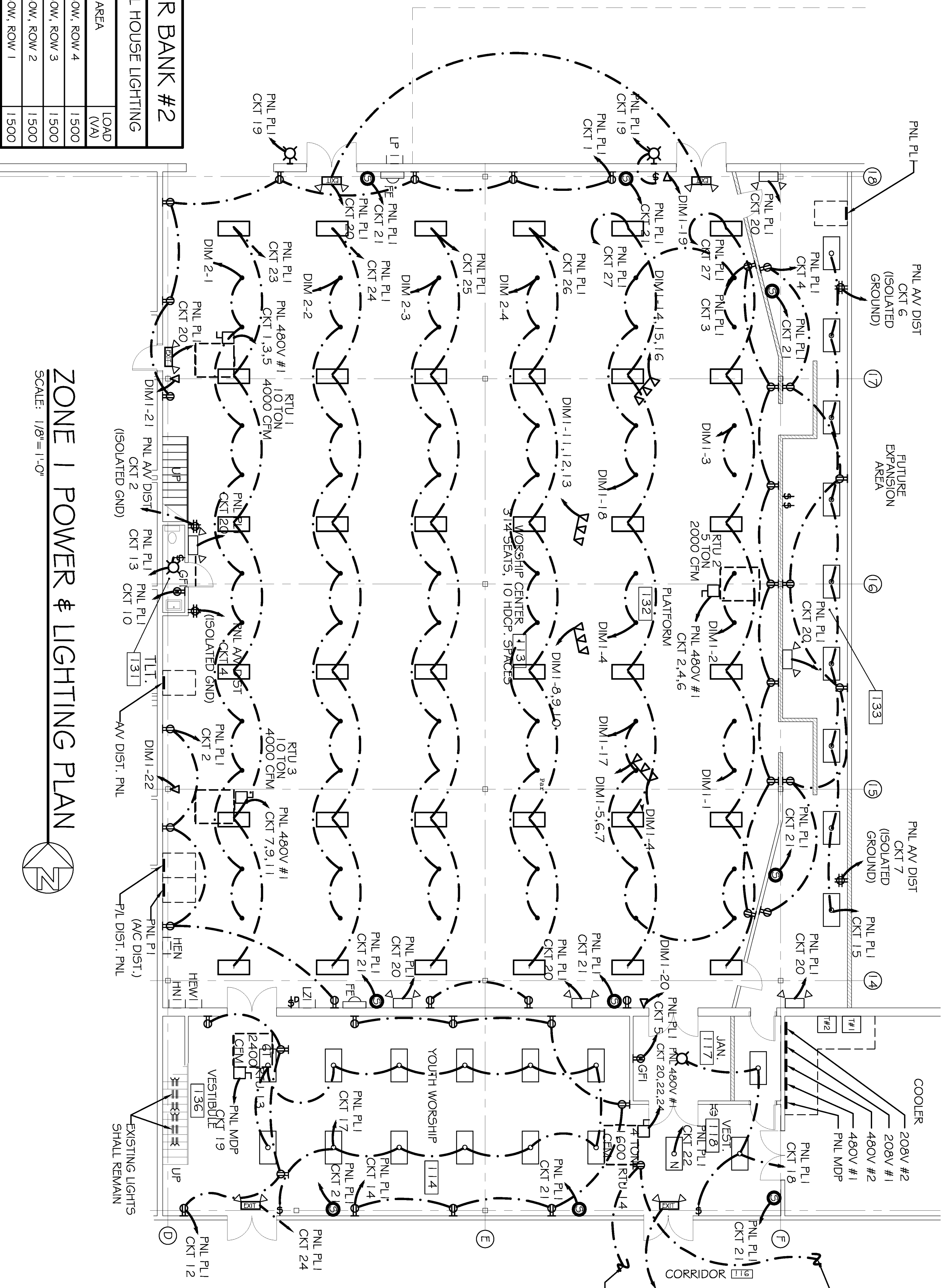
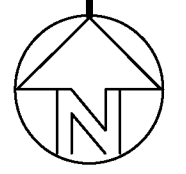


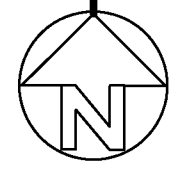
ELECTRICAL KEY PLAN

N.T.S.



ZONE 1 POWER & LIGHTING PLAN

SCALE: 1/8"=1'-0"



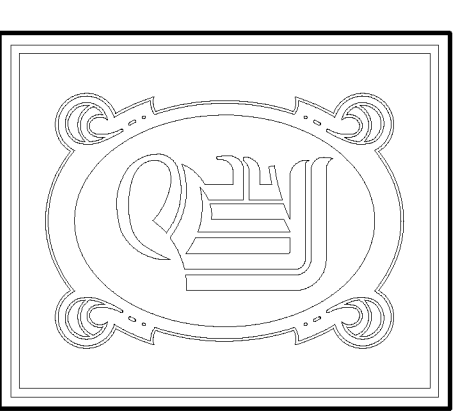
DIMMER BANK #1			
CKT. NO.	AREA	LOAD (VA)	CONTROLLER
1	PAR 36 STAGE LEFT, INNER	300	I
2	PAR 36 STAGE CENTER, REAR	300	
3	PAR 36 STAGE RIGHT, INNER	300	
4	PAR 36 STAGE CENTER, FRONT	300	
5	STAGE TRACK LIGHT #1-1	150	
6	STAGE TRACK LIGHT #1-2	150	
7	STAGE TRACK LIGHT #1-3	150	
8	STAGE TRACK LIGHT #2-1	150	
9	STAGE TRACK LIGHT #2-2	150	
10	STAGE TRACK LIGHT #2-3	150	
11	STAGE TRACK LIGHT #3-1	150	
12	STAGE TRACK LIGHT #3-2	150	
13	STAGE TRACK LIGHT #3-3	150	
14	STAGE TRACK LIGHT #4-1	150	
15	STAGE TRACK LIGHT #4-2	150	
16	STAGE TRACK LIGHT #4-3	150	
17	PAR 36 STAGE LEFT, OUT	900	
18	PAR 36 STAGE RIGHT, OUT	900	
19	LEFT WALL FRONT	200	
20	RIGHT WALL FRONT	200	
21	LEFT WALL REAR	200	
22	RIGHT WALL REAR	200	
23			
24			
TOTAL =		3000	
5GROW = 1.5 5A @ 120/208V-3Ø-4W			

DIMMER BANK #2			
CKT. NO.	AREA	LOAD (VA)	
1	PAR 36 150W, ROW 4	1500	
2	PAR 36 150W, ROW 3	1500	
3	PAR 36 150W, ROW 2	1500	
4	PAR 36 150W, ROW 1	1500	

LEGEND

NOTE:
FIRE ALARM SYSTEM SHALL BE INSTALLED BY A
CERTIFIED FIRE ALARM COMPANY.

- ⊕ - EXISTING DUPLEX OUTLET
- ⊕ - EXISTING DUPLEX GFI OUTLET
- ⊕ - EXISTING QUAD OUTLET
- ⊕ - EXISTING WEATHERPROOF GFI OUTLET
- ⊕ - EXISTING 208V OUTLET
- ⊕ - EXISTING WEATHERPROOF 208V OUTLET
- ⊕ - EXISTING DISCONNECT
- ⊕ - EXISTING POWER, LIGHTING PANEL
- ⊕ - EXISTING SWITCH
- ⊕ - EXISTING 3 WAY SWITCH
- ⊕ - EXISTING 2 X 4 FLUORESCENT FIXTURE
- ⊕ - EXISTING 2 X 4 FLUORESCENT FIXTURE
- ⊕ - EXISTING EXIT/EMERGENCY LIGHT
- ⊕ - EXISTING HALIDE LIGHT
- ⊕ - EXISTING HPS FIXTURE
- ⊕ - EXISTING TELEPHONE/ DATA OUTLET
- ⊕ - DUPLEX OUTLET
- ⊕ - DUPLEX GFI OUTLET
- ⊕ - QUAD OUTLET
- ⊕ - WEATHERPROOF GFI OUTLET
- ⊕ - 208V OUTLET
- ⊕ - FUSED DISCONNECT
- ⊕ - POWER, LIGHTING PANEL
- ⊕ - SWITCH
- ⊕ - DIMMER SWITCH
- ⊕ - 2 X 4 FLUORESCENT FIXTURE
- ⊕ - 2 X 4 FLUORESCENT FIXTURE - ALWAYS ON
- ⊕ - CEILING MOUNTED FIXTURE
- ⊕ - EXTERIOR WALL SCONCE FIXTURE W/ 90 MIN. BATTERY BACKUP
- ⊕ - FENDANT LIGHT
- ⊕ - TRACK LIGHTING
- ⊕ - REVERSIBLE CEILING FAN (REVERSIBLE @ WALL SWITCH)
- ⊕ - EXTERIOR WALL SCONCE FIXTURE W. 90 MIN. BACKUP
- ⊕ - EXIT LIGHT W/ 90 MIN. BACKUP
- ⊕ - EXIT/EMERGENCY LIGHT W/ 90 MIN. BACKUP (ARROW INDICATES DIRECTIONAL EXIT SIGN)
- ⊕ - EMERGENCY LIGHT W/ 90 MIN. BACKUP
- ⊕ - CABLE TV OUTLET
- ⊕ - TELEPHONE OUTLET
- ⊕ - SMOKE DETECTOR
- ⊕ - VENT
- ⊕ - FIRE EXTINGUISHER AND CABINET- 10 LB. MULTI-USE



DAMMON ENGINEERING, INC.
 CHIEF ENGINEER
 ENNETT
 DAMMON, P.E.
 CHIEF ARCHITECT
 ROBERT
 WILTSE

1095 FLORIDA AVENUE
 SLIDELL, LA, 70458
 OFFICE: 985-649-5632
 FAX: 985-641-5950
 WWW: DAMMONENGINEERING.COM
 EMAIL: DAMMONENG@BELLSouth.NET

ARCHITECTURE
 ENGINEERING
 STUDIES
 PLANNING
 INVESTIGATION
 EXPERT WITNESS

NORTHSHORE
 CHURCH
 KENSINGTON DR.
 SLIDELL, LA

ZONE 1 POWER
 & LIGHTING
 PLAN

REV:03-23-09
 SCALE: AS NOTED
 JOB#: 1988
 DATE: 09-30-08
 SHEET
E-4
 OF